

14441 ROTUNDA DRIVE
DEARBORN, MICHIGAN

OFFICE FOR LEASE
1,780 - 5,540 Square Feet Available



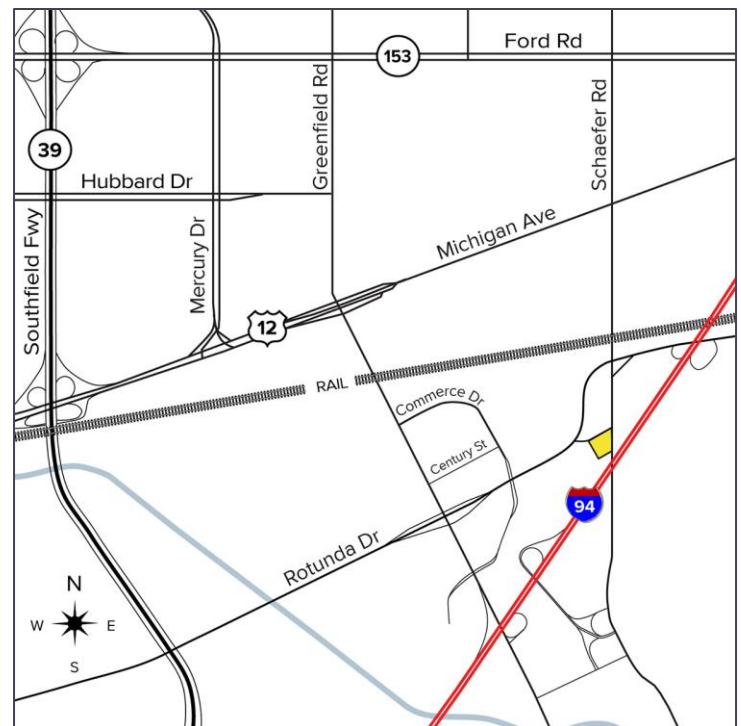
**SIGNATURE
ASSOCIATES**
KNOW SIGNATURE | KNOW RESULTS

SCHAEFER COURT III



PROPERTY FEATURES

- 1,780 - 5,540 square feet available
- Office space build-to-suit
- Excellent freeway access/near I-94 and M-39
- 200+ Parking (ample for all suites)
- High efficiency fire suppression system
- Monument signage on Rotunda and Schaefer
- Lease rate: \$12.00/sq. ft. NNN



For more information, please contact:

JACK TOWNSEND
(248) 948 0115
jtownsend@signatureassociates.com

CHRIS SECONTINE
(248) 799 3174
csecontine@signatureassociates.com

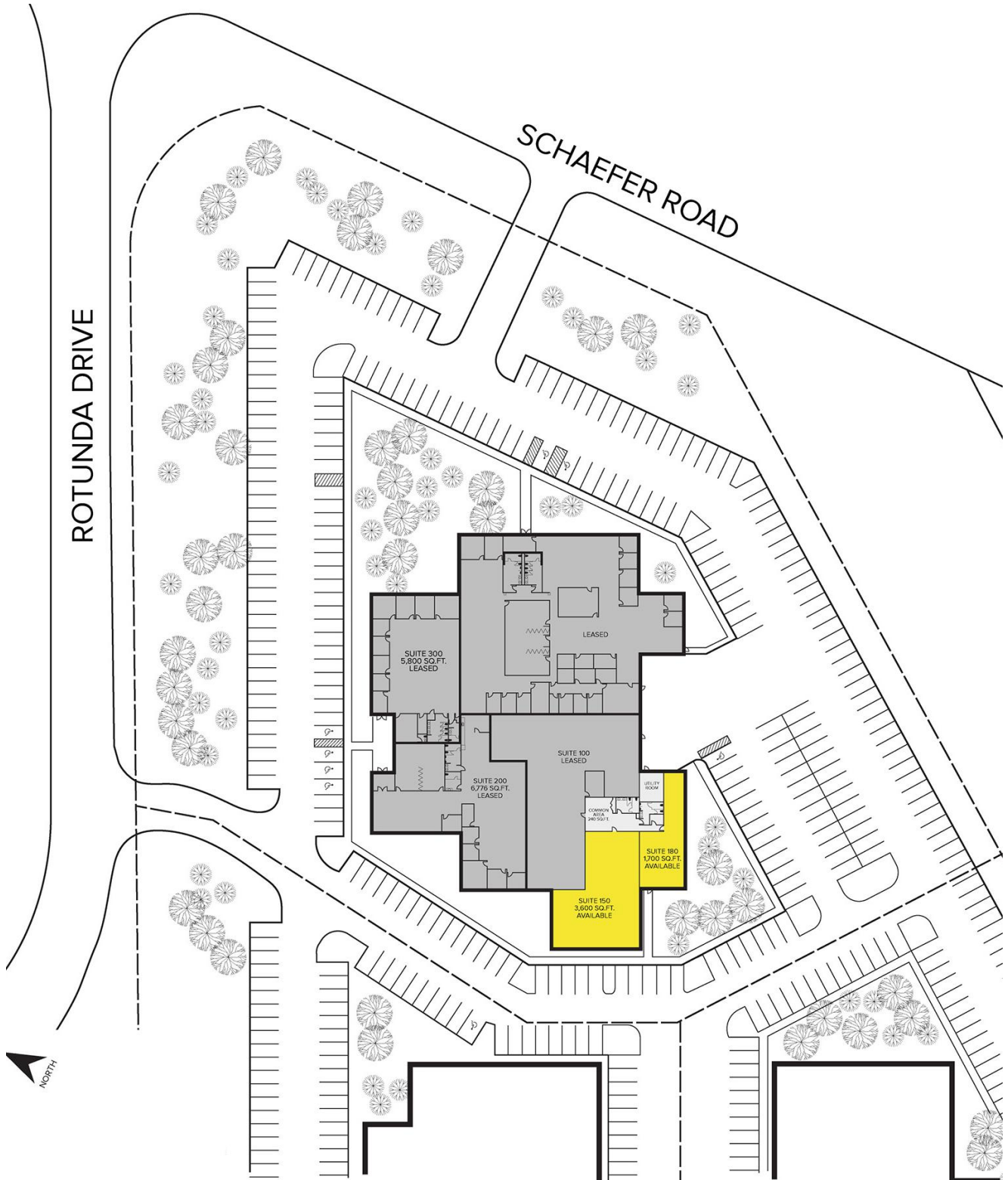
SIGNATURE ASSOCIATES
One Towne Square, Suite 1200
Southfield, MI 48076
www.signatureassociates.com

14441 Rotunda Drive – Dearborn, Michigan

Office For Lease

5,540
Square Feet
AVAILABLE

Site Plan



For more information, please contact:

JACK TOWNSEND
(248) 948 0115
jtownsend@signatureassociates.com

CHRIS SECONTINE
(248) 799 3174
csecontine@signatureassociates.com

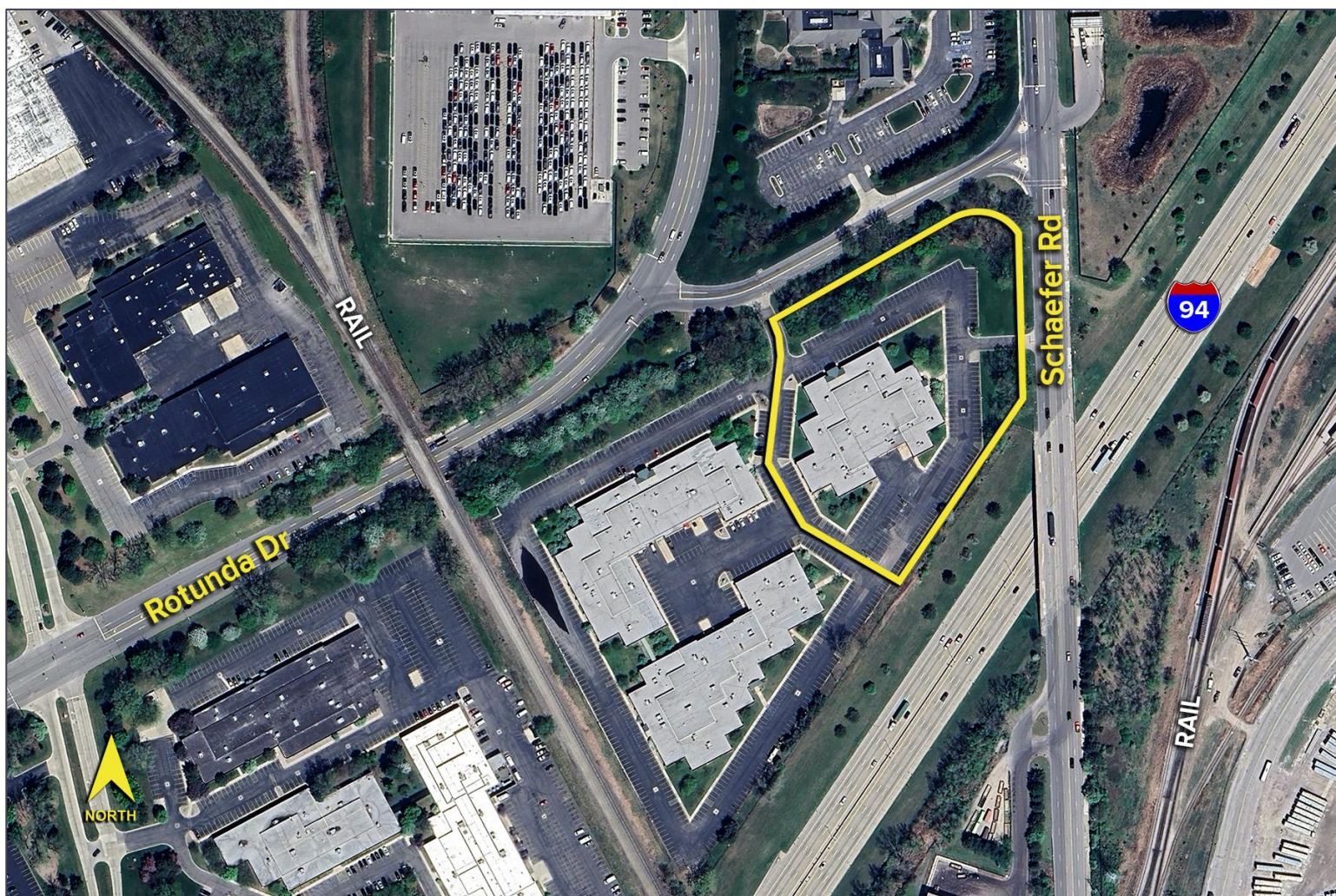
SIGNATURE ASSOCIATES
One Towne Square, Suite 1200
Southfield, MI 48076
www.signatureassociates.com

14441 Rotunda Drive – Dearborn, Michigan

Office For Lease

5,540
Square Feet
AVAILABLE

Aerial



For more information, please contact:

JACK TOWNSEND

(248) 948 0115

jtownsend@signatureassociates.com

CHRIS SECONTINE

(248) 799 3174

csecontine@signatureassociates.com

SIGNATURE ASSOCIATES

One Towne Square, Suite 1200

Southfield, MI 48076

www.signatureassociates.com