

325 West 1700 South

Clearfield, UT 84015

10,890 Sq. Ft. Warehouse on 0.68 Acres For Sale or Lease

Property Features

- + Available: 10,890 Sq. Ft. on 0.68 Acres
- + APN: 12-809-0002
- + Loading: 8 Drive in Doors
- + Power: 600 Amp, 240 Volt, 3 Phase
- + Clear Height: 14'
- + Year Built: 1997
- + Construction: Masonry Block
- + Zoning: C-2, Commercial
- + Located 0.5 Miles to I-15 On/Off Ramp
- + 0.8 Miles to Clearfield Trax Station



Contact Us

Jeff Richards

Executive Vice President
+1 801 869 8026
jeff.richards@cbre.com

Chris Liddell

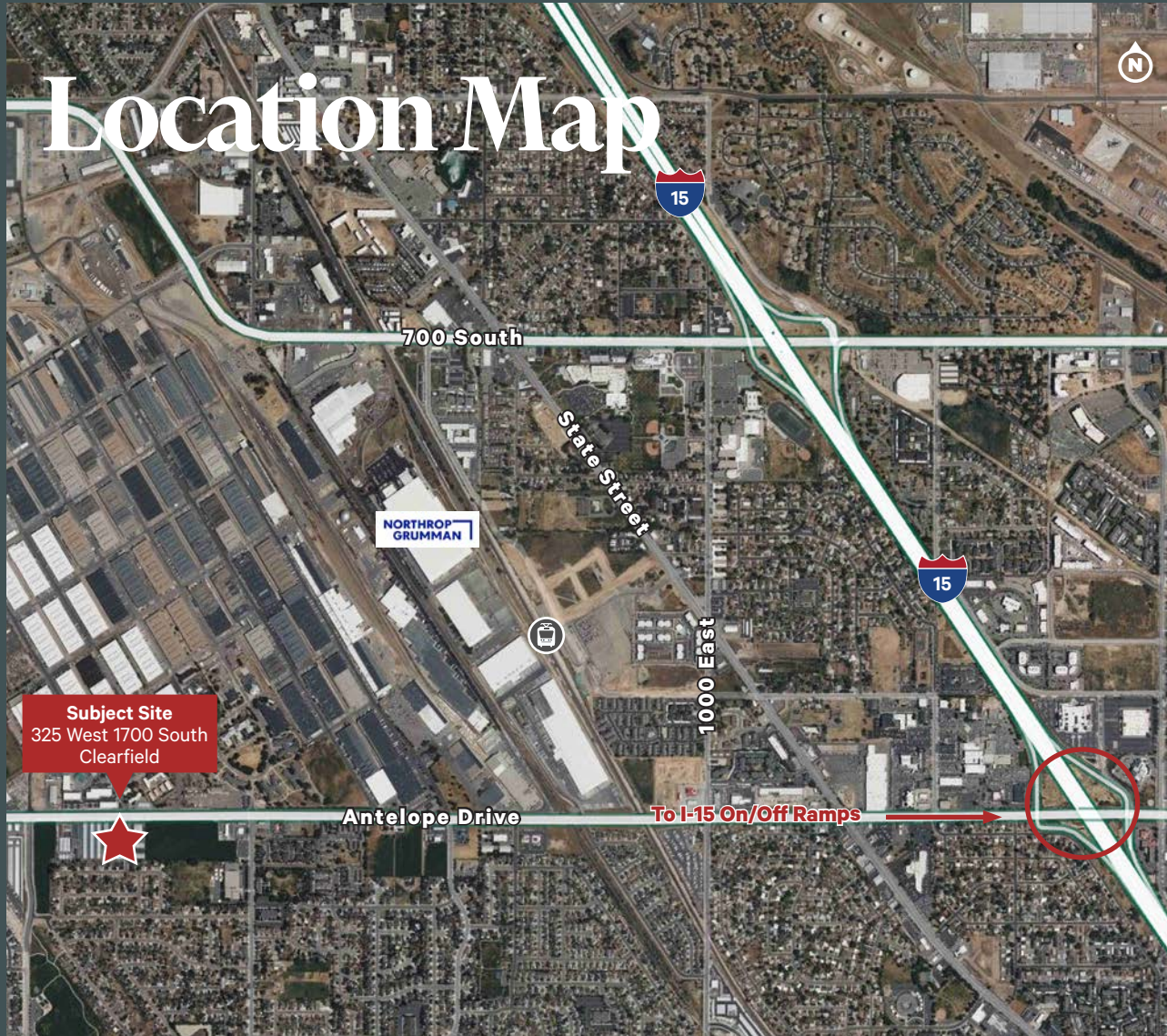
Senior Vice President
+1 801 869 8007
chris.liddell@cbre.com

Tom Dischmann

Executive Vice President
+1 801 243 9411
tom.dischmann@cbre.com

Matt McAfee

Senior Vice President
+1 801 869 8023
matt.mcafee@cbre.com



© 2025 CBRE, Inc. All rights reserved. This information has been obtained from sources believed reliable but has not been verified for accuracy or completeness. CBRE, Inc. makes no guarantee, representation or warranty and accepts no responsibility or liability as to the accuracy, completeness, or reliability of the information contained herein. You should conduct a careful, independent investigation of the property and verify all information. Any reliance on this information is solely at your own risk.