

Owned By:



PARC NORTHEAST

Richardson, Texas

4 Buildings | Up to 83,365 SF Available | Class A Core Industrial



Move-In Ready Suite Available



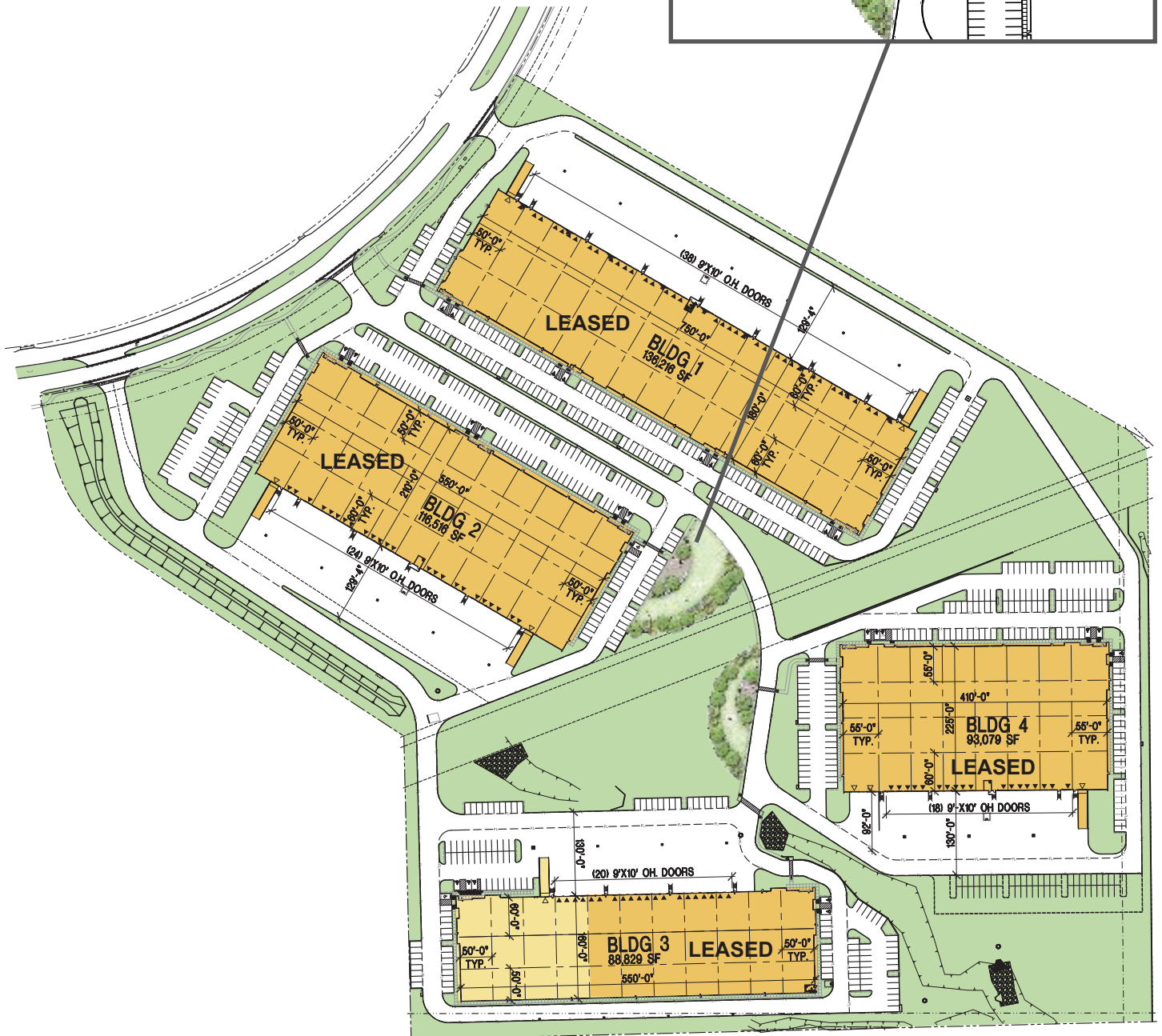
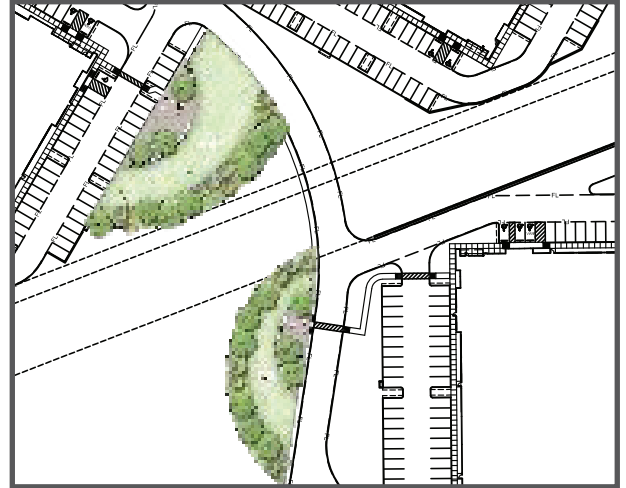
Leased By:



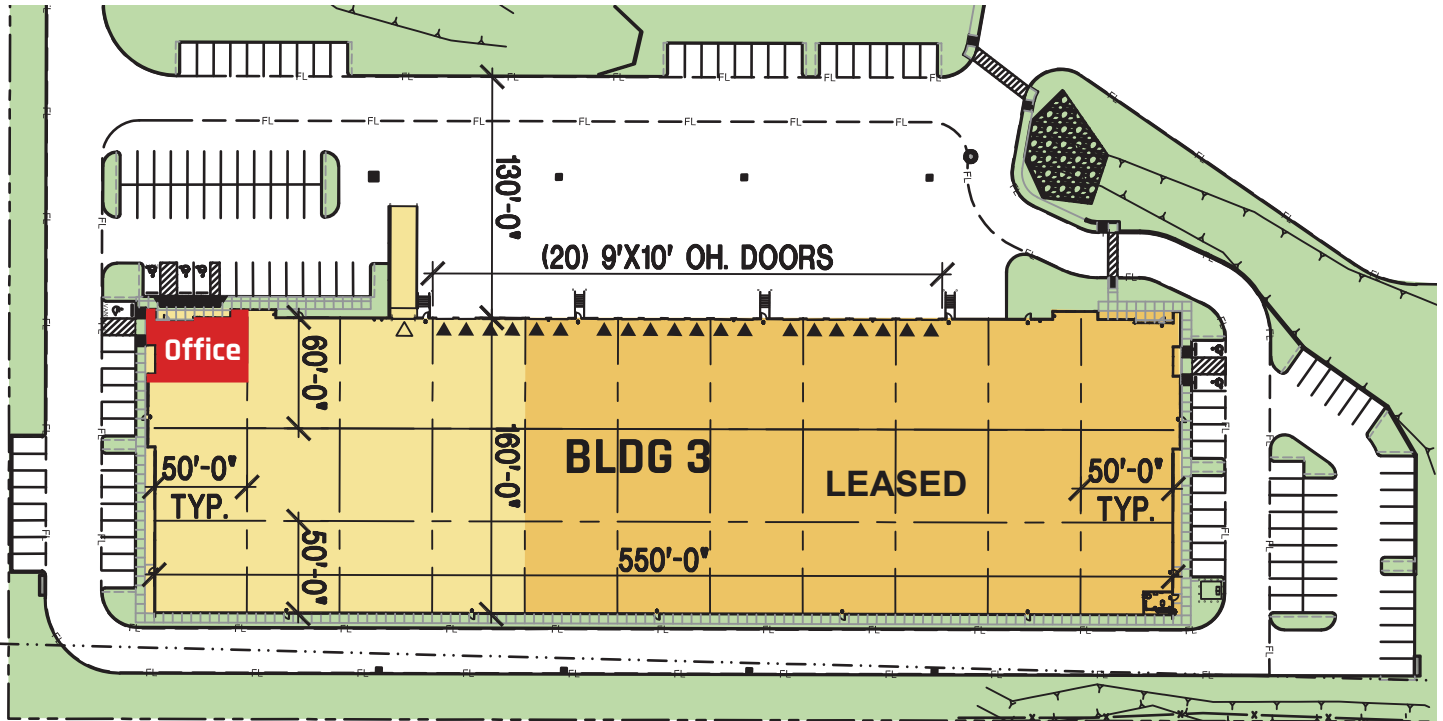
MASTER PLAN

- Class A Industrial - Built 2019
- Not within Plano's restrictive "RT" zoning
- Move-in ready suite available
- Excellent access to PG&T & US-75
- Nearby executive housing & strong labor supply

Enhanced landscaping including outdoor seating and garden areas



BUILDING 3 | Move-In Ready

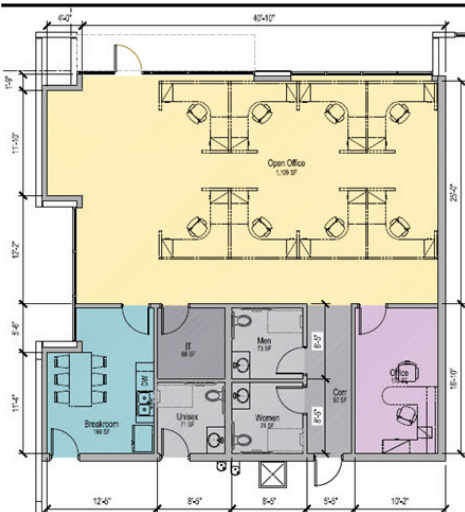


BUILDING 3

2930 Telecom Parkway | Richardson, Texas

BUILDING SQUARE FEET:	88,829 SF	DOCK DOORS:	4
AVAILABLE SQUARE FEET:	32,669 SF	DRIVE-IN DOORS:	1
MINIMUM DIVISIBLE:	32,669 SF	PARKING SPACES:	69
DIMENSIONS:	550' x 160'	TRUCK COURT:	130'
CLEAR HEIGHT:	28'	SPRINKLER SYSTEM:	ESFR
TYPICAL BAY:	50' x 50'	CONFIGURATION:	Front Load

OFFICE PLAN | 1,857 SF (Complete)





Leased By



JOSH BARNES, SIOR
jbarnes@holtlunsford.com | 972.280.8353

BLAKE TROIANI
btroiani@holtlunsford.com | 972.265.0126

WESTON PORTER
wporter@holtlunsford.com | 214.442.8933

Owned By



