

FOR SALE | INDUSTRIAL
409 BOYNE STREET
NEW WESTMINSTER, BC

**LEE &
ASSOCIATES**
COMMERCIAL REAL ESTATE SERVICES



- ▶ **16,514 SF Freestanding Multi-Tenant Industrial Facility on a 0.77 Acre Corner Lot**
- ▶ **Owner User or Investment Opportunity**
- ▶ **Located in Queensborough**

Chris McIntyre
Personal Real Estate Corporation
D 604.630.3392 C 604.889.0699
chris.mcintyre@lee-associates.com

Tony Capolongo
D 604.630.3378 C 604.290.5318
tony.capolongo@lee-associates.com

CELEBRATING OVER
50
YEARS IN VANCOUVER

Legal Description

LOT 1, BLOCK A, PLAN BCP50009, DISTRICT LOT 757, GROUP 1, NEW WESTMINSTER LAND DISTRICT

PID

028-767-691

Zoning

M1 (Light Industrial)

Year Built

2012

Lot Size

33,538 SF (0.77 acres)

Building Size (Approximate)

TOTAL BUILDING 16,514 SF

UNIT A

Office	837 SF
Warehouse	4,505 SF
TOTAL	5,342 SF

UNIT B

Office	812 SF
Warehouse	5,769 SF
TOTAL	6,581 SF

UNIT C

Warehouse	4,591 SF
TOTAL	4,591 SF

Tenancy

Unit A: 5,342 SF is leased to Queensborough Landing Return-It Depot.

Units B-C: 11,172 SF combined is owner occupied – vacant possession.

Property Taxes

\$100,389.22 (2025)

Asking Price

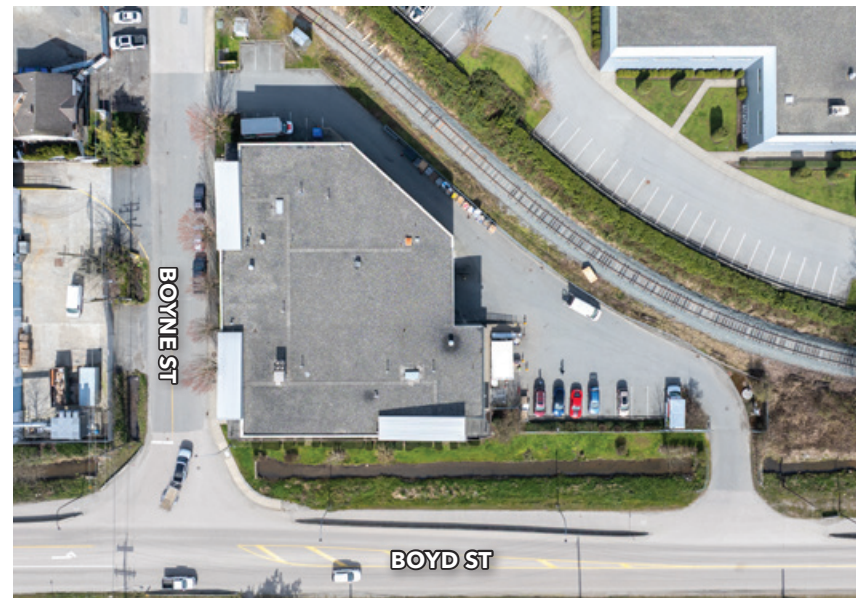
\$9,800,000

Location

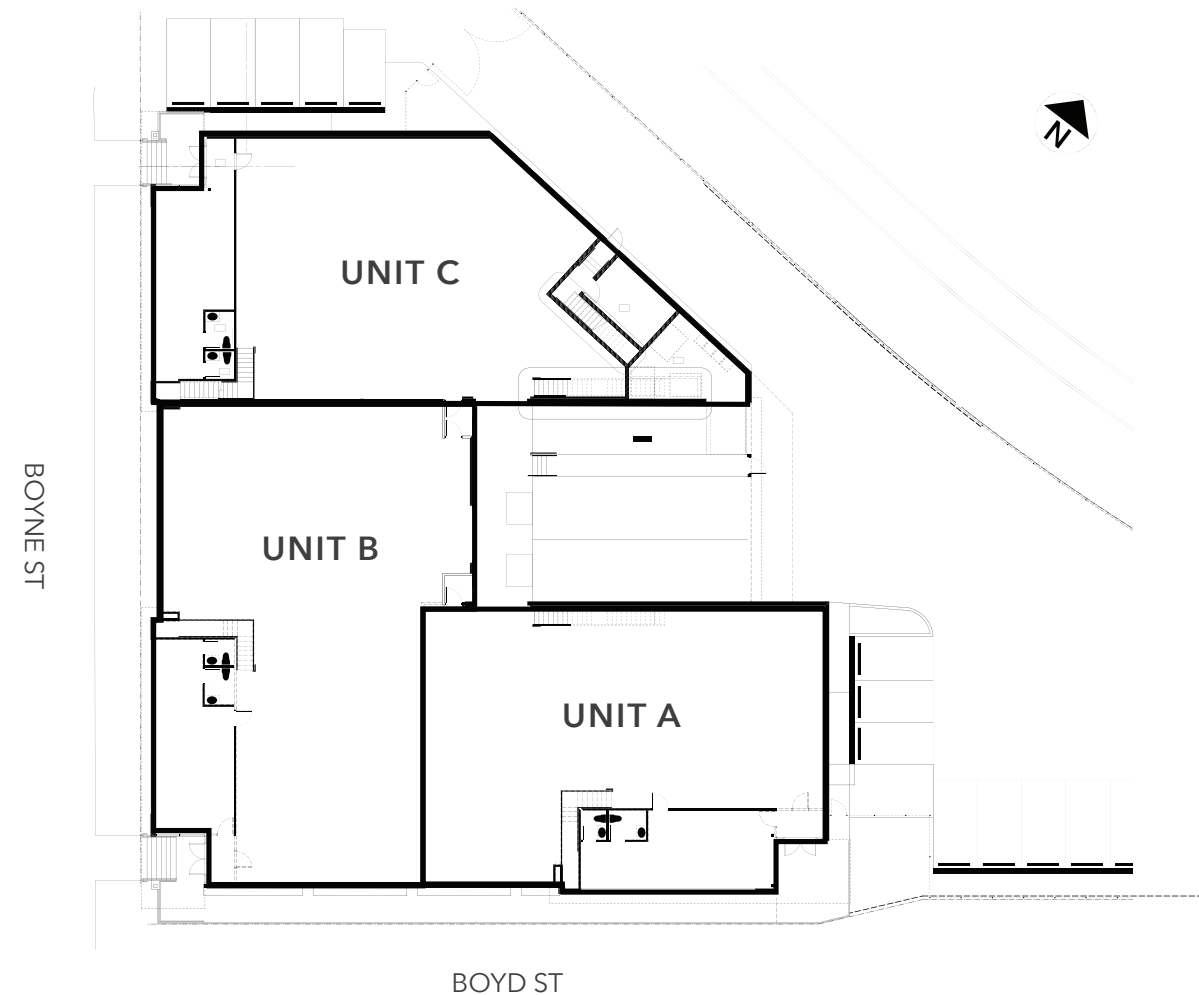
The Subject Property is prominently located at the corner of Boyne Street and Boyd Street in the Queensborough neighbourhood of New Westminster, directly adjacent to the Queensborough Logistics Park. Centrally located within the Lower Mainland, the property is just four minutes to Highway 91 via the 91A/Queensborough Connector and the Queensborough Bridge, providing efficient connectivity to Vancouver, Burnaby, Richmond, Delta, and New Westminster. The property is also in close proximity to ample shopping and area amenities at Queensborough Landing Shopping Centre.

Features

- ▶ High-exposure corner freestanding tilt-up concrete building
- ▶ Flexible multi-tenant layout (3 separately metered units)
- ▶ Sprinklered
- ▶ 24' warehouse ceiling
- ▶ T5 warehouse lights
- ▶ Gas-forced air heating
- ▶ High-profile, architecturally designed, quality facility built by Boffo
- ▶ 800-amp 3-phase main electrical service (to be verified)
- ▶ Presentable office, bathrooms, and shower facilities
- ▶ Covered dock loading positions, two with levellers
- ▶ Electric grade doors
- ▶ Fenced and gated lot with 20 on-site parking stalls
- ▶ Unit B warehouse & office area serviced by HVAC
- ▶ Primarily ground floor area; the only mezzanine area is Unit A (837 SF)



Site Plan





Chris McIntyre
Personal Real Estate Corporation
D 604.630.3392 C 604.889.0699
chris.mcintyre@lee-associates.com

Tony Capolongo
D 604.630.3378 C 604.290.5318
tony.capolongo@lee-associates.com