

GUINN INDUSTRIAL PARK

3 UNITS AVAILABLE

1,200 - 3,600 SF

FOR LEASE - \$875.00 GROSS PER MONTH PER UNIT

933 BROWN ROAD :: ORION TOWNSHIP, MI

- Main road frontage with close proximity to I-75
- Three units available comprised of 1,200 sq. ft. each including one grade level door per unit
- Extra land for additional parking
- Zoned light industrial
- 16' ceiling height

FOR MORE INFORMATION PLEASE CONTACT:

Matthew J. Osiecki

Senior Associate

248.351.2079

matt.osiecki@cbre.com

Eugene J. Agnone, III

Associate

248.351.2024

eugene.agnone@cbre.com



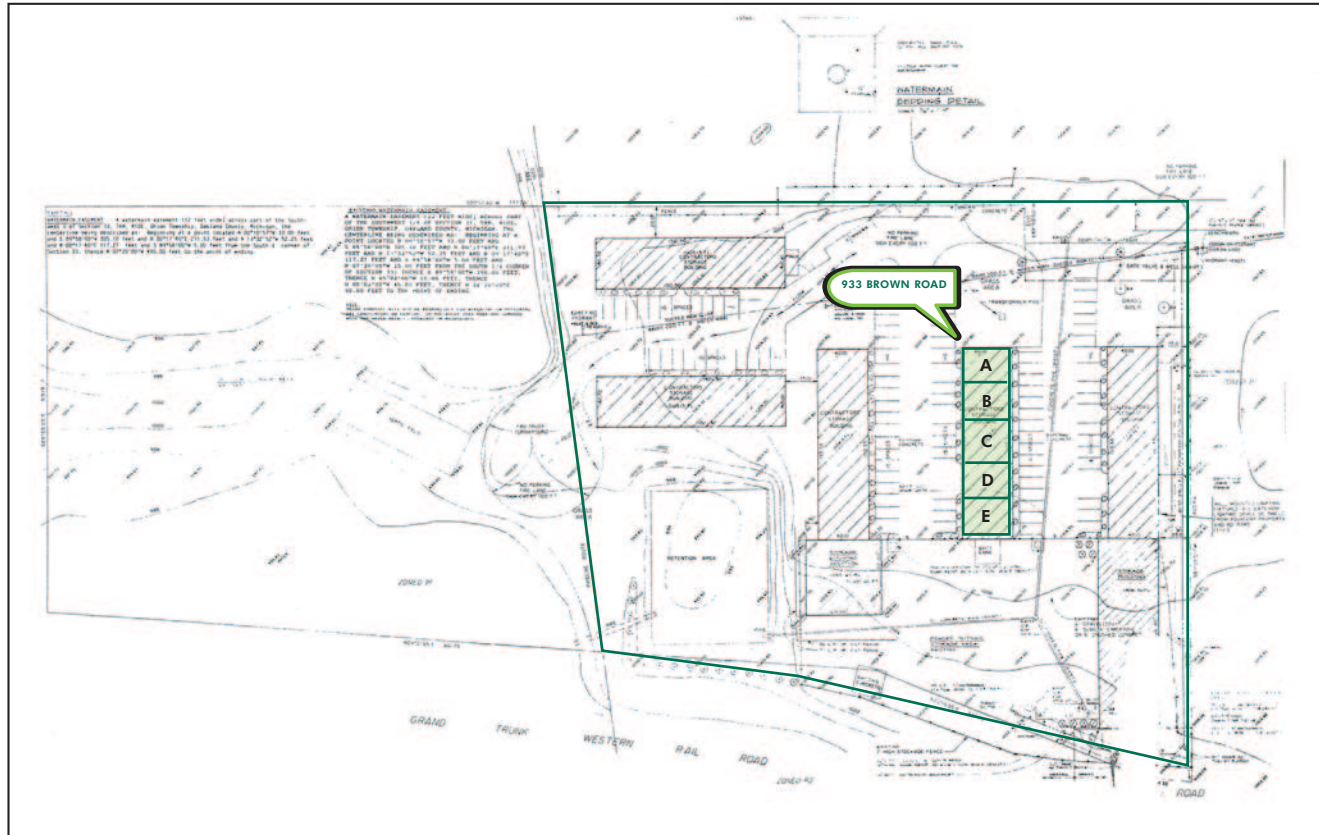
CBRE
CB RICHARD ELLIS

GUINN INDUSTRIAL PARK

3 UNITS AVAILABLE
1,200 - 3,600 SF

FOR LEASE :: 933 BROWN ROAD :: ORION TOWNSHIP, MICHIGAN

SITE PLAN



FOR MORE INFORMATION CONTACT:

Matthew J. Osiecki

Senior Associate

248.351.2079

matt.osiecki@cbre.com

Eugene J. Agnone, III

Associate

248.351.2024

eugene.agnone@cbre.com

CB Richard Ellis | 2000 Town Center | Suite 500 | Southfield, MI 48075 | www.cbre.com/detroit

©2009 CB Richard Ellis, Inc. The information above has been obtained from sources believed reliable. While we do not doubt its accuracy, we have not verified it and make no guarantee, warranty or representation about it. It is your responsibility to independently confirm its accuracy and completeness.

CBRE
CB RICHARD ELLIS