



HAMISH BUSINESS PARK

TOMBALL, TX 77377



JONATHAN SELLERS

CEO

832.748.1283

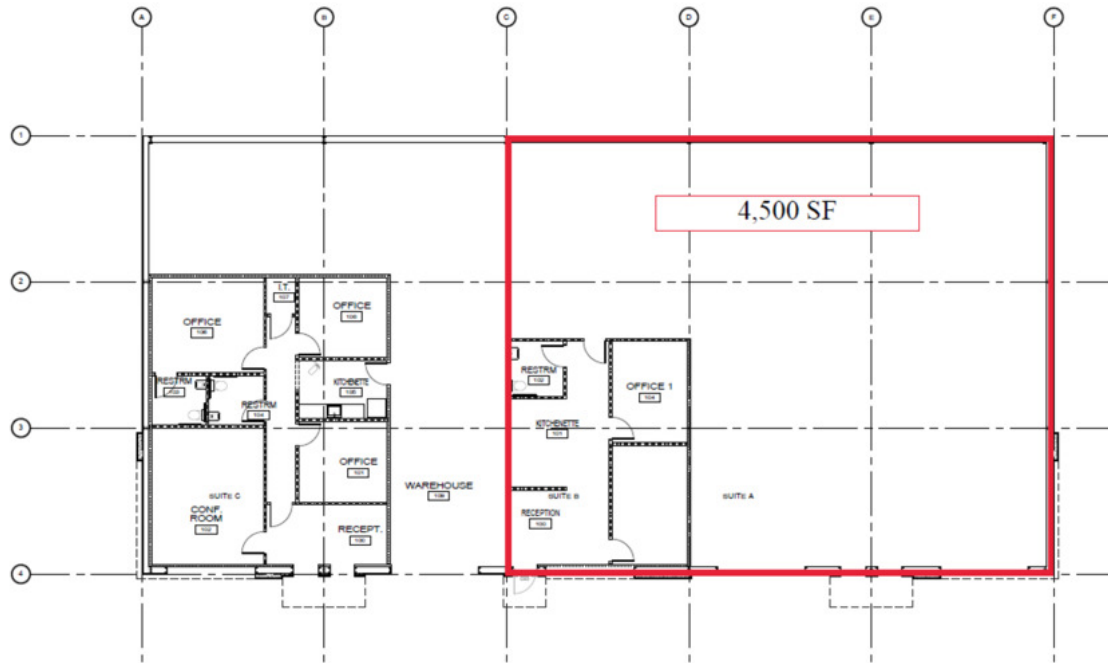
jonathan.sellers@revkocre.com

18803 Hamish, Suite F, Tomball, TX 77377 | 281.547.8334 | revkocre.com

HAMISH BUSINESS PARK

18815 HAMISH RD SUITE A/B/C | TOMBALL, TX 77377

18815 Hamish Rd. Suite A/B/C

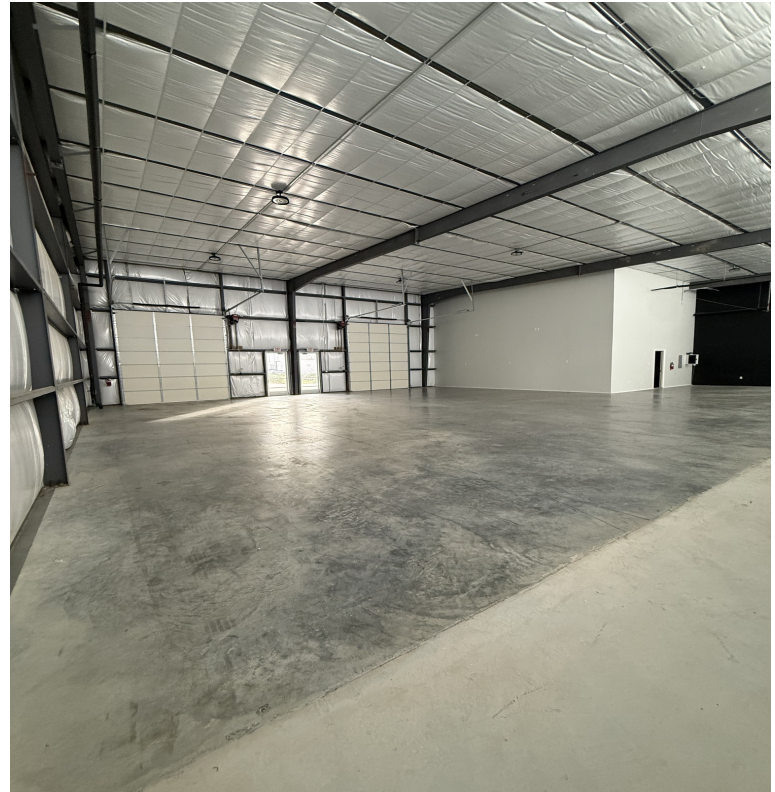


PROPERTY OVERVIEW

Availability:	±4,500 SF
Loading:	Two (2) 14' x 16' OH doors with motorized openers
Power:	3-phase
Eave Height:	±18'
Office:	One (1) with ±800 SF of improvements
Restrooms:	One (1)
Kitchenette:	Yes
Lease Type:	NNN

\$6,570/MONTH

FIRST 2 MONTHS FREE RENT



JONATHAN SELLERS

CEO
832.748.1283
jonathan.sellers@revkocre.com

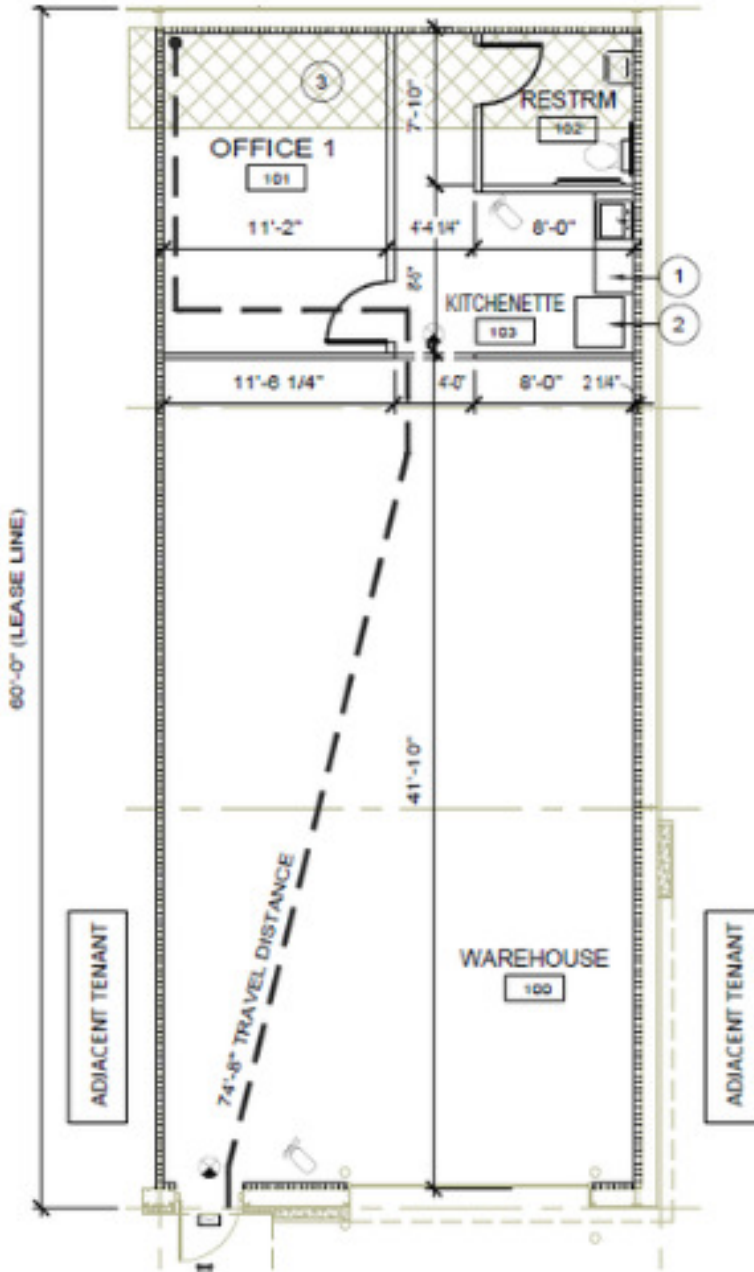
All information furnished regarding property for sale, rental or financing is from sources deemed reliable, but no warranty or representation is made to the accuracy thereof and same is submitted to errors, omissions, change of price, rental or other conditions prior to sale, lease or financing or withdrawal without notice. No liability of any kind is to be imposed on the broker herein.



HAMISH BUSINESS PARK

18823 HAMISH RD SUITE A | TOMBALL, TX 77377

18823 Hamish Rd. Suite A



PROPERTY OVERVIEW

Availability: ±1,500 SF

Loading: One (1) 14' x 16' overhead door

Power: 3-phase

Eave Height: ±18'

Office: One (1) with ±300 SF of improvements

Restrooms: One (1)

Kitchenette: Yes

Features: Climate Controlled Warehouse

Lease Type: NNN

TOTAL RENT: \$2,190/MONTH



JONATHAN SELLERS

CEO
832.748.1283
jonathan.sellers@revkocre.com

All information furnished regarding property for sale, rental or financing is from sources deemed reliable, but no warranty or representation is made to the accuracy thereof and same is submitted to errors, omissions, change of price, rental or other conditions prior to sale, lease or financing or withdrawal without notice. No liability of any kind is to be imposed on the broker herein.



HAMISH BUSINESS PARK

18807 HAMISH RD SUITE A/B | TOMBALL, TX 77377

PROPERTY OVERVIEW

MOVE-IN READY: JUNE 1, 2026

Availability: ±3,000 SF

Loading: Two (2) 14' x 16' overhead doors

Power: 3-phase

Eave Height: ±18'

Office: Four (4) with ±1,500 SF of improvements

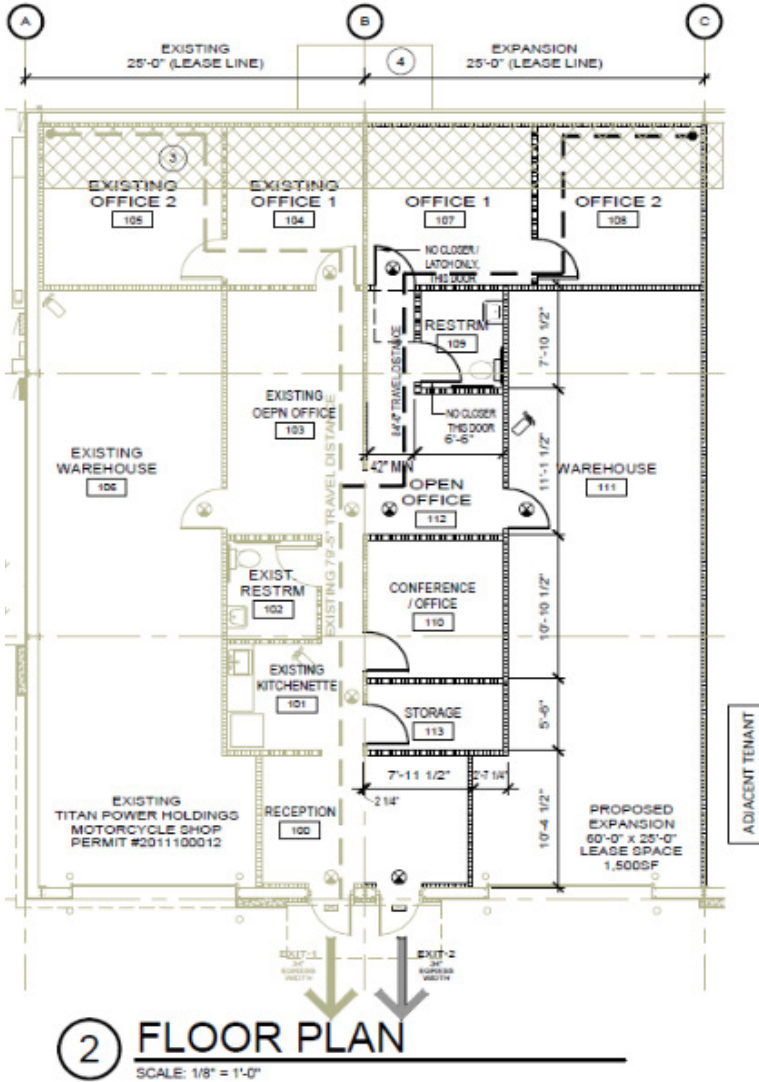
Restrooms: Two (2)

Kitchenette: Yes

Lease Type: NNN

TOTAL RENT: \$4,380/MONTH

18807 Hamish Rd. Suite A/B



JONATHAN SELLERS

CEO
832.748.1283
jonathan.sellers@revkocre.com

All information furnished regarding property for sale, rental or financing is from sources deemed reliable, but no warranty or representation is made to the accuracy thereof and same is submitted to errors, omissions, change of price, rental or other conditions prior to sale, lease or financing or withdrawal without notice. No liability of any kind is to be imposed on the broker herein.



HAMISH BUSINESS PARK

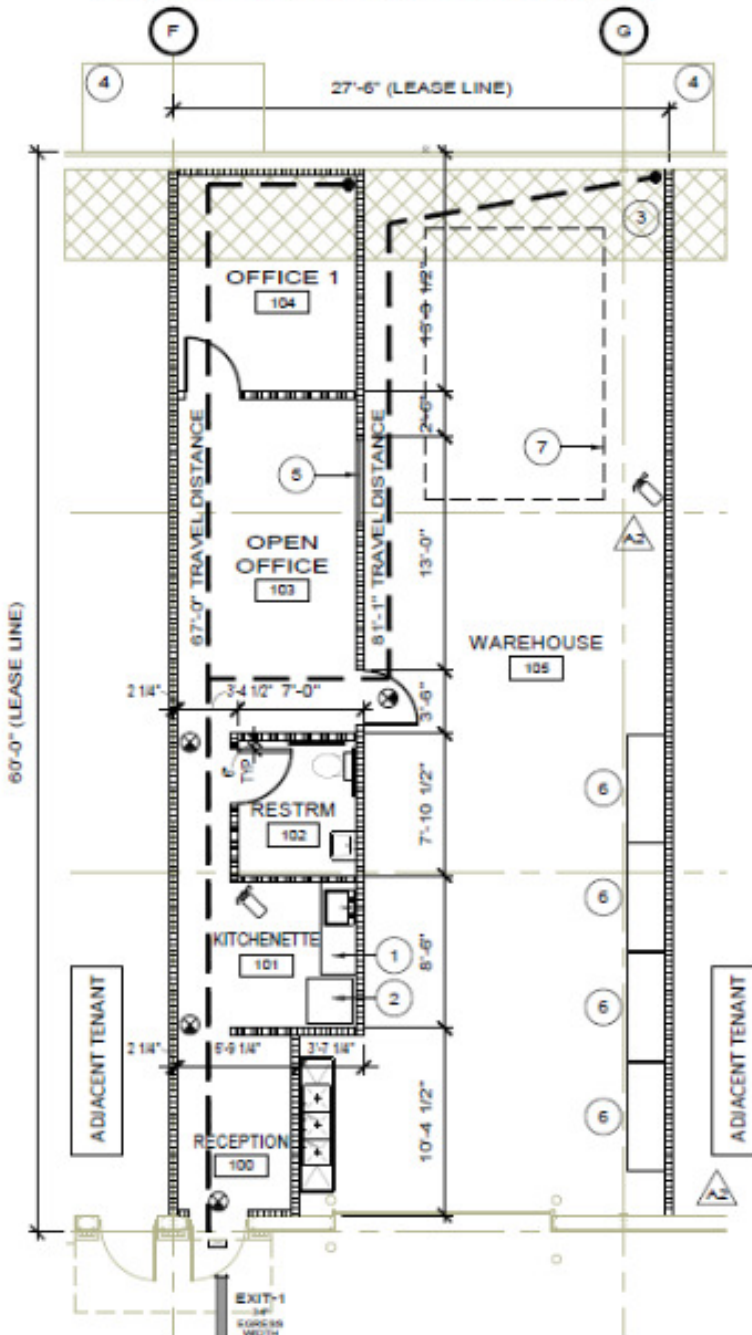
18807 HAMISH RD SUITE F | TOMBALL, TX 77377

PROPERTY OVERVIEW

Availability:	±1,650 SF
Loading:	One (1) 14' x 16' overhead door
Power:	3-phase
Eave Height:	±18'
Office:	±580 SF
Restroom:	One (1)
Kitchenette:	Yes
Lease Type:	NNN

TOTAL RENT: \$2,409/MONTH

18807 Hamish Rd. Suite F



JONATHAN SELLERS

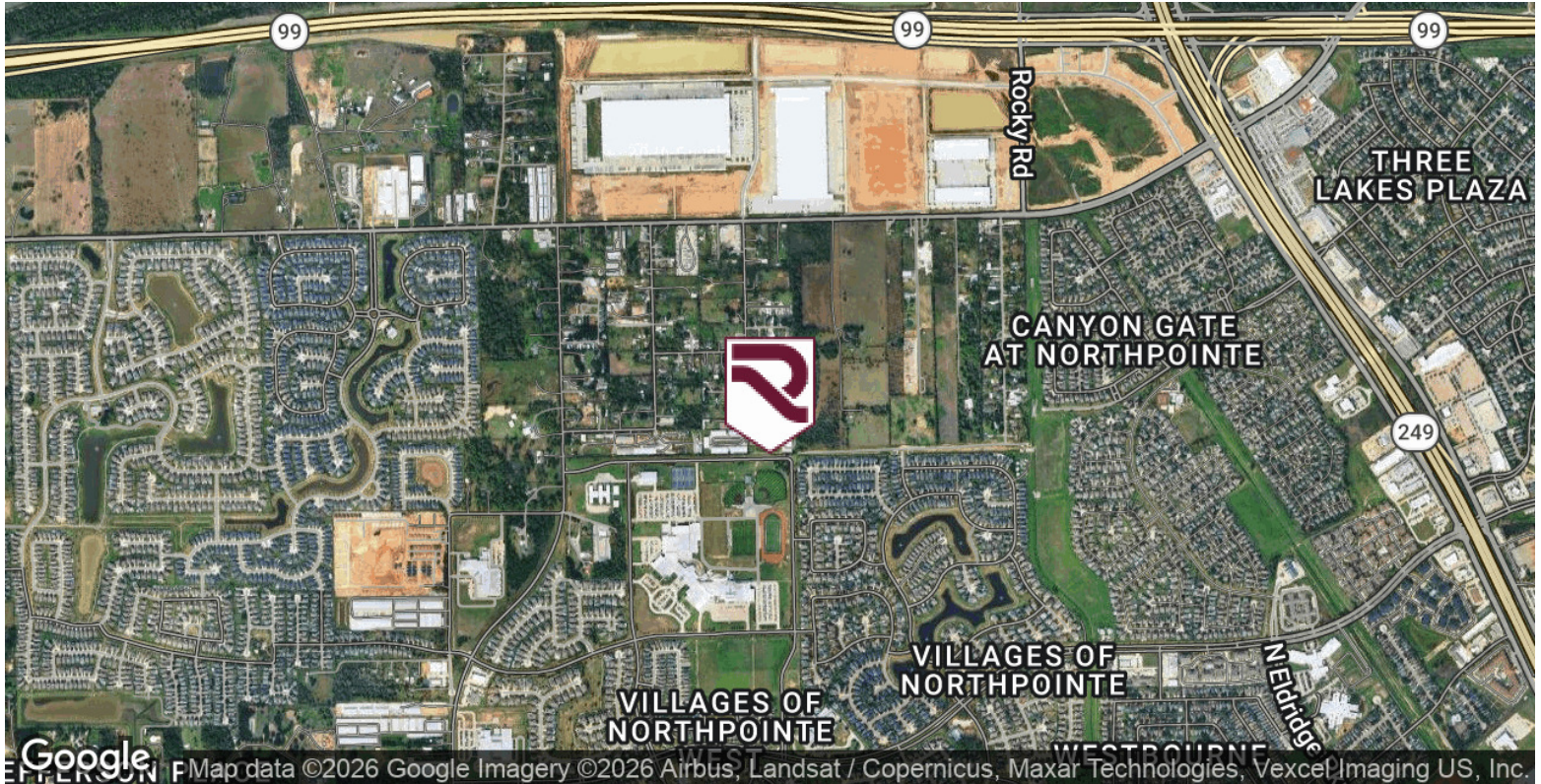
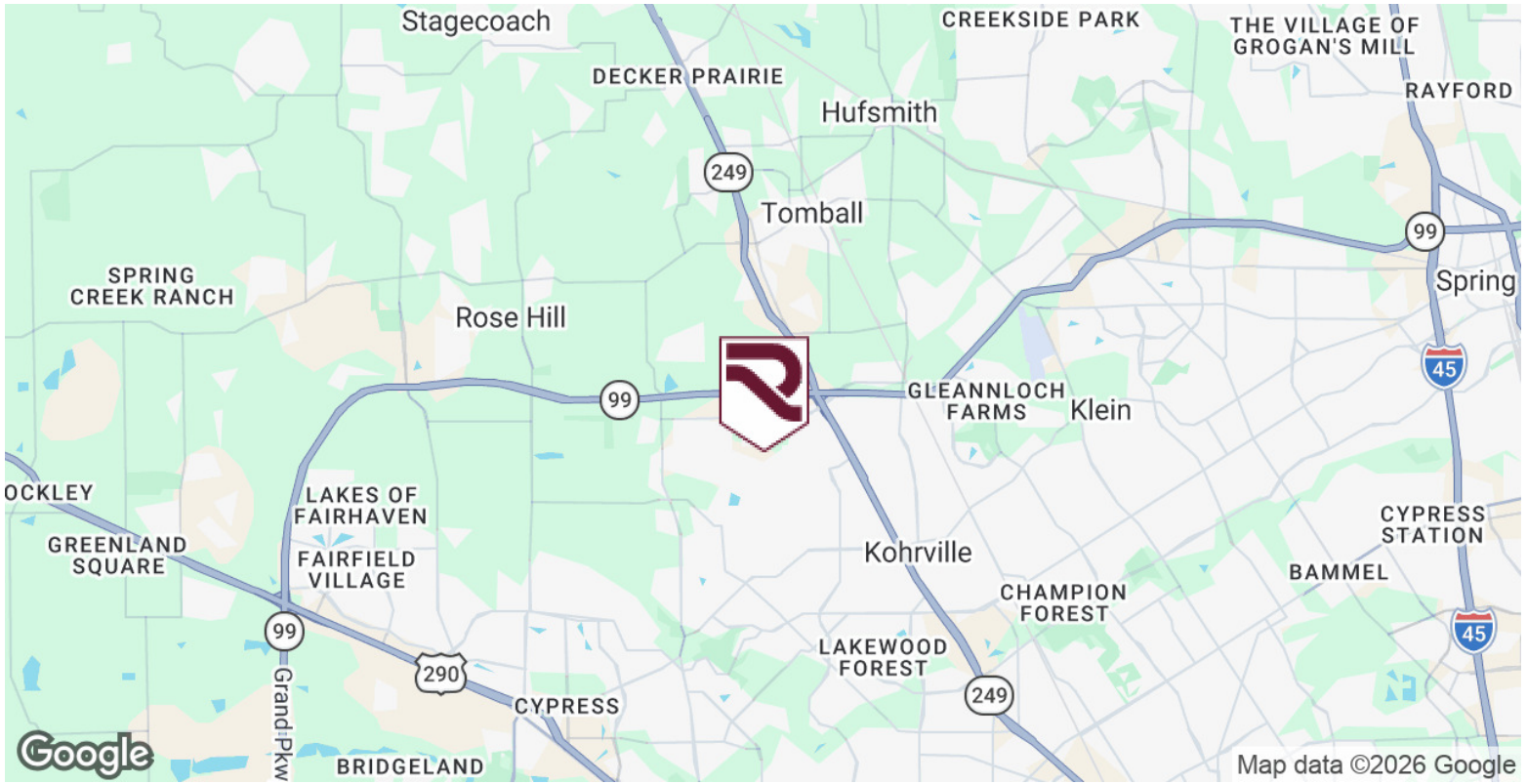
CEO
832.748.1283
jonathan.sellers@revkocre.com

All information furnished regarding property for sale, rental or financing is from sources deemed reliable, but no warranty or representation is made to the accuracy thereof and same is submitted to errors, omissions, change of price, rental or other conditions prior to sale, lease or financing or withdrawal without notice. No liability of any kind is to be imposed on the broker herein.



HAMISH BUSINESS PARK

TOMBALL, TX 77377



JONATHAN SELLERS

CEO
832.748.1283
jonathan.sellers@revkocre.com

All information furnished regarding property for sale, rental or financing is from sources deemed reliable, but no warranty or representation is made to the accuracy thereof and same is submitted to errors, omissions, change of price, rental or other conditions prior to sale, lease or financing or withdrawal without notice. No liability of any kind is to be imposed on the broker herein.



