

1905 28th Street
Marshalls Plaza
Boulder, CO

17,889
Square Feet

Rare Junior Box Availability:

Former Office Depot offering large-format retail in a highly supply-constrained Boulder market

Premier 28th Street Location:

Situated on Boulder's busiest retail corridor with approximately 45,000 vehicles per day

Strong National Co-Tenancy:

Located in Marshall's Plaza, one of Boulder's most heavily trafficked shopping centers, alongside REI, Marshalls, and other national retailers

Excellent Visibility & Signage:

Prominent frontage with exceptional branding and signage exposure

Open Floor Plan with High Ceilings:

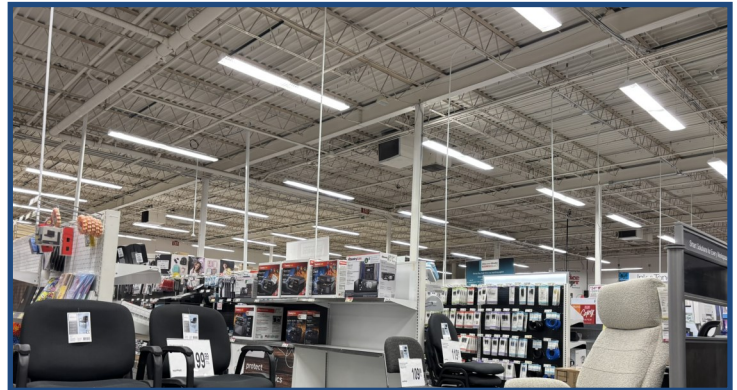
18'8" clear height (to be verified) for a wide range of retail, fitness or showroom

Functional Loading Area:

Rare back-of-house functionality for efficient deliveries and operations

Ample On-Site Parking:

Abundant surface parking serving high-volume retail traffic



CONFIDENTIAL: DO NOT DISTURB TENANT



TEBO
PROPERTIES

Contact us for more information:

leasing@teboproperties.com

303-447-8326

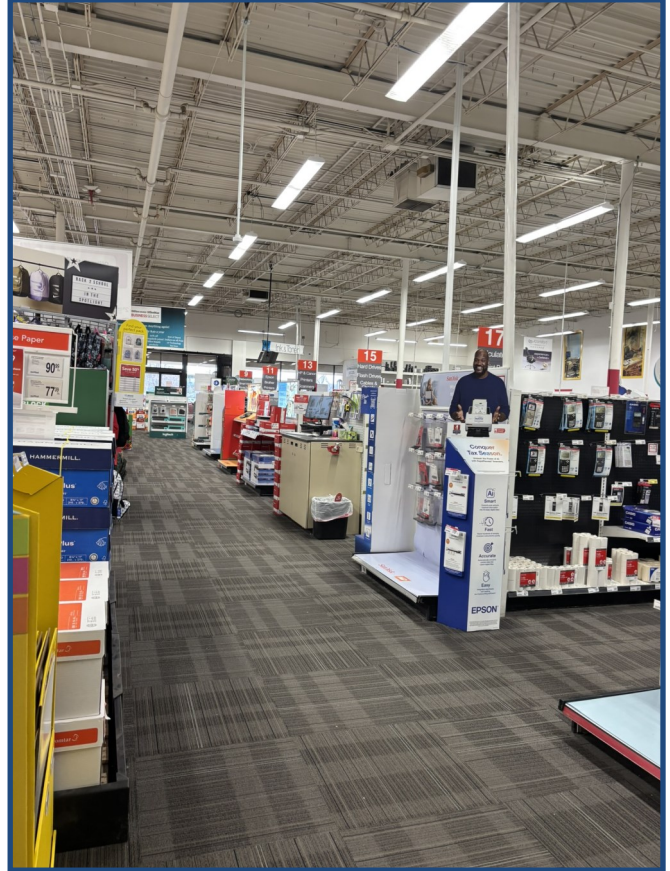
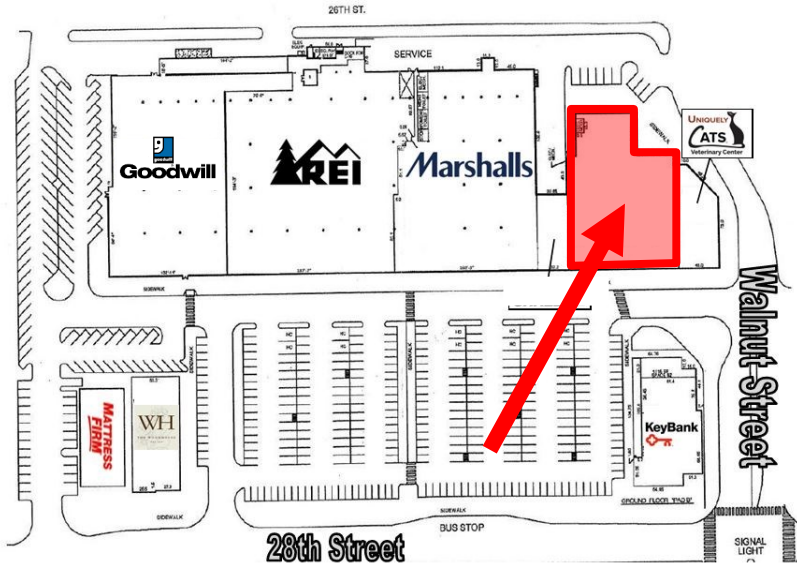
www.TEBOproperties.com

JR BOX RETAIL SPACE FOR LEASE

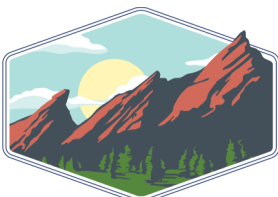


TEBO
PROPERTIES

1905 28th Street, Boulder, CO



Square Footage	Price (NNN estimate as of 12/31/25)
17,889	Call for Rate



TEBO
PROPERTIES

Contact us for more information:
leasing@teboproperties.com
 303-447-8326
www.TEBOproperties.com