

# Arsenault Environmental Consulting

Monday, February 21, 2022

## Memorandum

To: Gerald Slack

From: Joseph Arsenault

RE: Block 225 Voorhees and Blocks 50.03 and 50.04 Evesham

Good Morning Gerry:

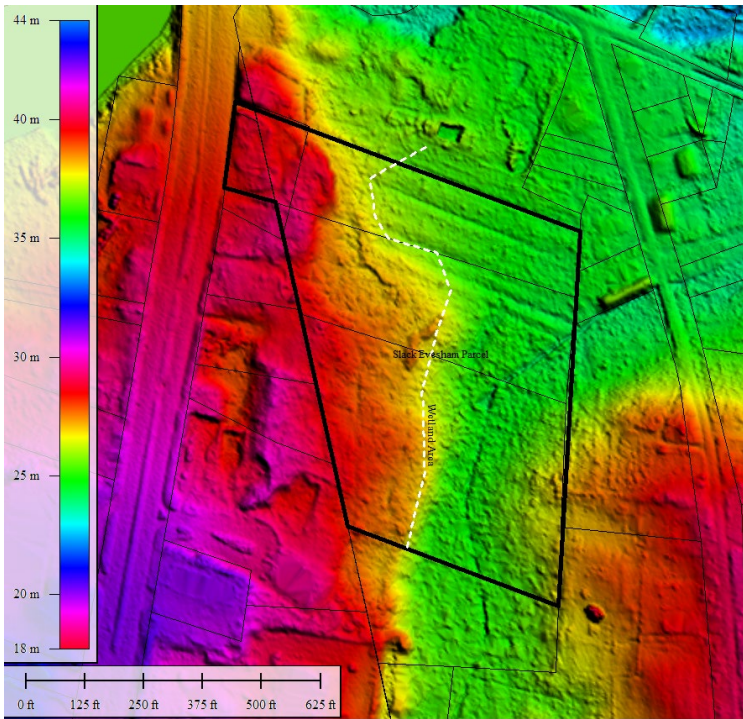
I am writing to let you know I performed the site inspection on the Rt 73/Milford suite of parcels known as Block 225 Lot 11 Voorhees, and Blocks 50.03/50.04 Evesham. I searched the lots for wetlands and discovered about ½ of the land is in a wetland. The wetlands follow a topographic and soils boundary that somewhat parallels Rt. 73.

I attach a photo with the wetland area roughly superimposed. As it illustrates, the eastern ½ of the tract is wetlands. All of the wetlands are in Evesham Township, and all are within the NJ Pinelands. Pinelands' wetlands are protected by a 300-foot buffer that can be reduced in this area to 175'. The reduction would require review and approval from the Commission staff. Based on my rough measurements, the reduced by would not be sufficient to utilized much of the Evesham side of the tract.

Hopefully this provides sufficient information for your potential use of this property. Let me know if you have any questions.

Sincerely,

Joe Arsenault



Color photo (top) and Color Topography (below); dash line approximates the wetland boundary that requires formal delineation and verification.