



**COLDWELL
BANKER
COMMERCIAL**

LYLE & ASSOCIATES, LP

FOR LEASE

PLAZA AT SUNRISE (EXECUTIVE OFFICE SUITES)

\$2.50 SF/month (Full Service)

555 S Sunrise Way
Palm Springs, CA 92264

AREA

Located at the Southwest corner of S. Sunrise Way and E. Ramon Road.



OFFICE

Rob Wenthold
760 641 7602
rwenthold@dc.rr.com
CalDRE #01153834

CBCWORLDWIDE.COM

©2020 Coldwell Banker. All Rights Reserved. Coldwell Banker and the Coldwell Banker Commercial logos are trademarks of Coldwell Banker Real Estate LLC. The Coldwell Banker® System is comprised of company owned offices which are owned by a subsidiary of Realogy Brokerage Group LLC and franchised offices which are independently owned and operated. The Coldwell Banker System fully supports the principles of the Equal Opportunity Act.

COLDWELL BANKER COMMERCIAL
LYLE & ASSOCIATES, LP
78000 Fred Waring Drive, Suite 200, Palm Desert, CA 92211
760.772.6400



PLAZA AT SUNRISE (EXECUTIVE OFFICE SUITES)

555 S Sunrise Way, Palm Springs, CA 92264



OFFERING SUMMARY

Available SF:	250 - 1,025 SF
Lease Rate:	\$2.50 SF/month (Full Service)
Lot Size:	0 Acres
Year Built:	2005
Building Size:	37,307 SF

PROPERTY OVERVIEW

PLAZA AT SUNRISE (EXECUTIVE OFFICE SUITES) Located in the "center" of Palm Springs, this Multi-Use property offers hard-to-find "small" Office Suites (which may easily be combined to create larger Offices) in a professional atmosphere. Mountain views, easy access and abundant Private Parking add to the property's endless list of accolades, and create an ambiance appropriate for any business!
 Negotiable Lease Terms Available for Immediate Occupancy!

PROPERTY HIGHLIGHTS

- Accessible to all desert cities.
- Easy access.
- Abundant private parking.
- Great mountain views.

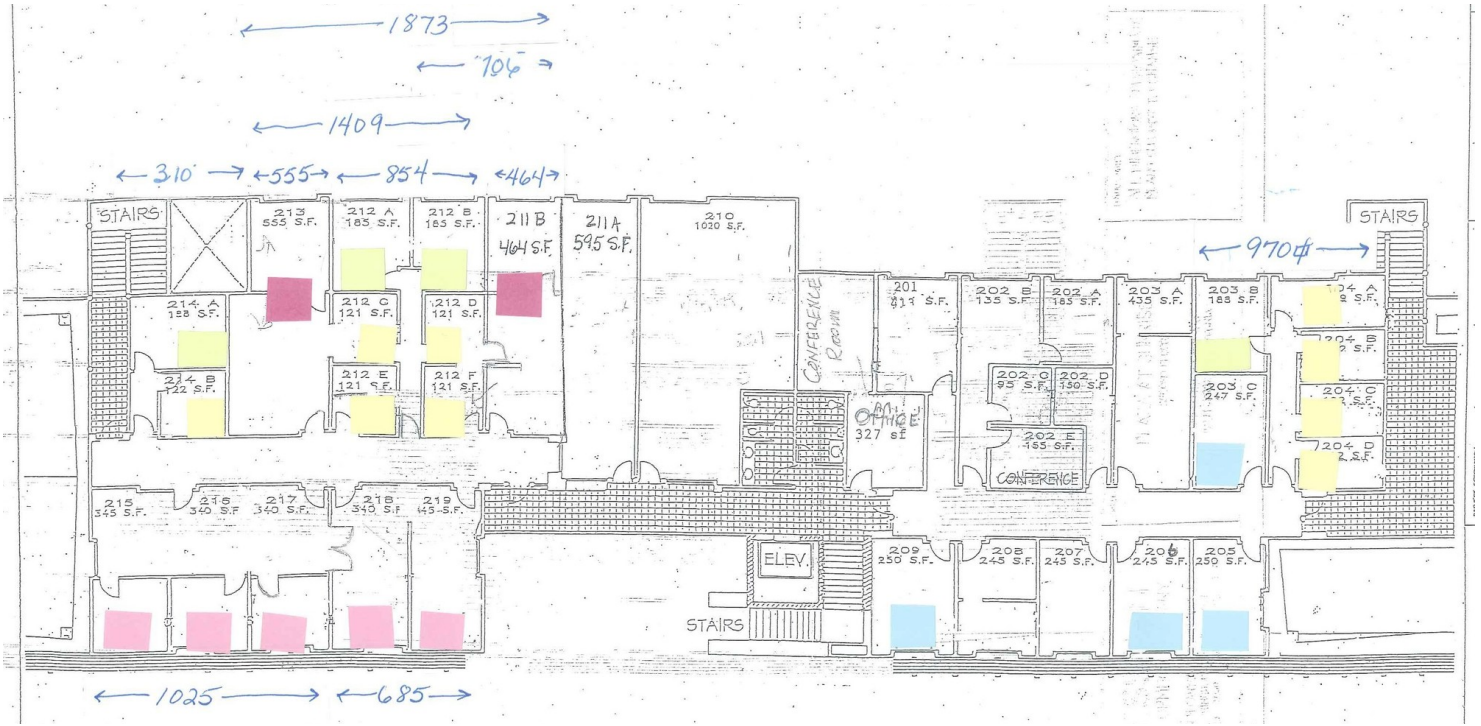
CBCWORLDWIDE.COM

Rob Wenthold
 760 641 7602
 rwenthold@dc.rr.com
 CalDRE #01153834



PLAZA AT SUNRISE (EXECUTIVE OFFICE SUITES)

555 S Sunrise Way, Palm Springs, CA 92264



CBCWORLDWIDE.COM

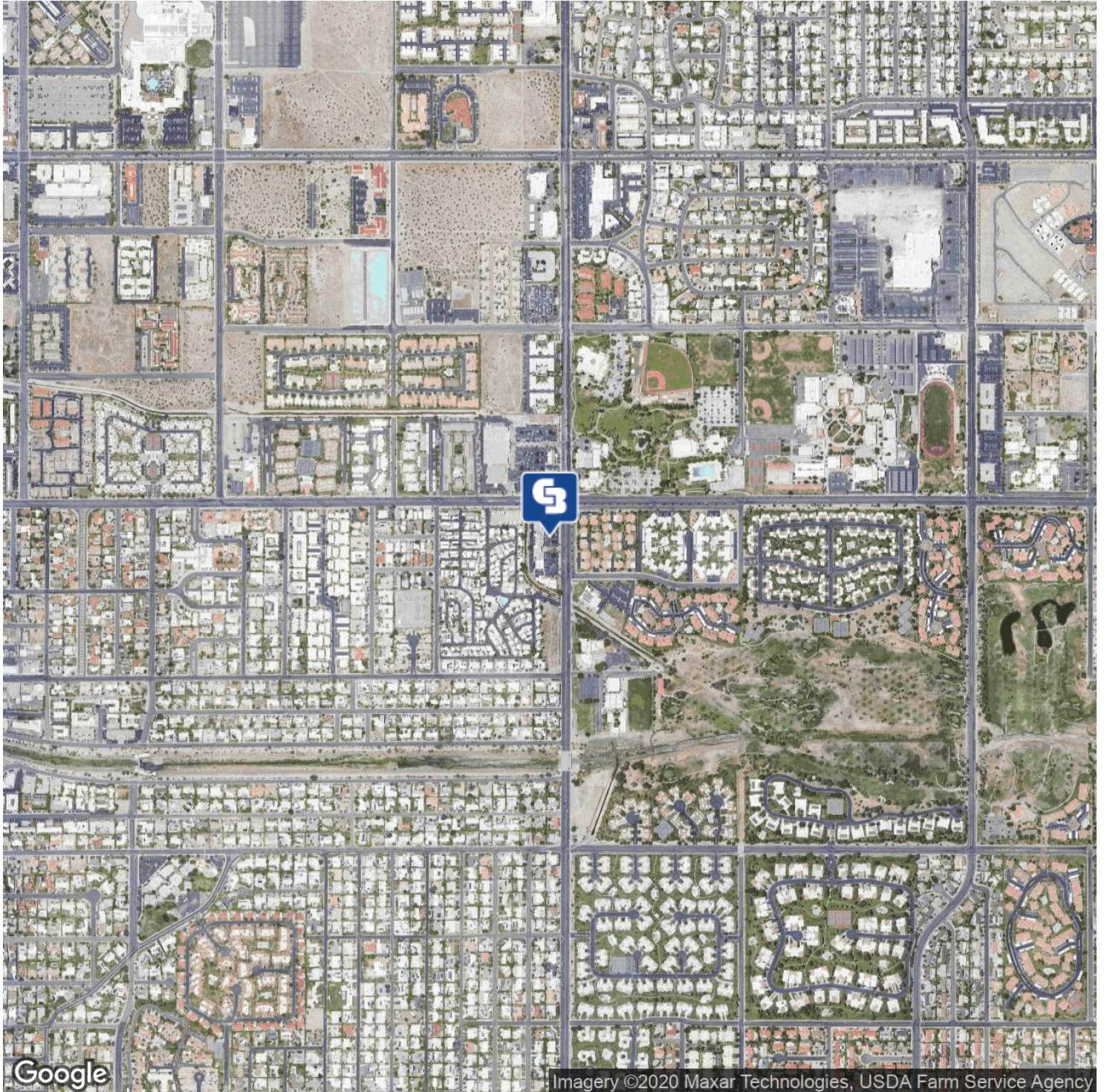
Rob Wenthold
 760 641 7602
 rwenthold@dc.rr.com
 CalDRE #01153834



PLAZA AT SUNRISE (EXECUTIVE OFFICE SUITES)

555 S Sunrise Way, Palm Springs, CA 92264

LEASE



CBCWORLDWIDE.COM

Rob Wenthold
760 641 7602
rwenthold@dc.rr.com
CalDRE #01153834



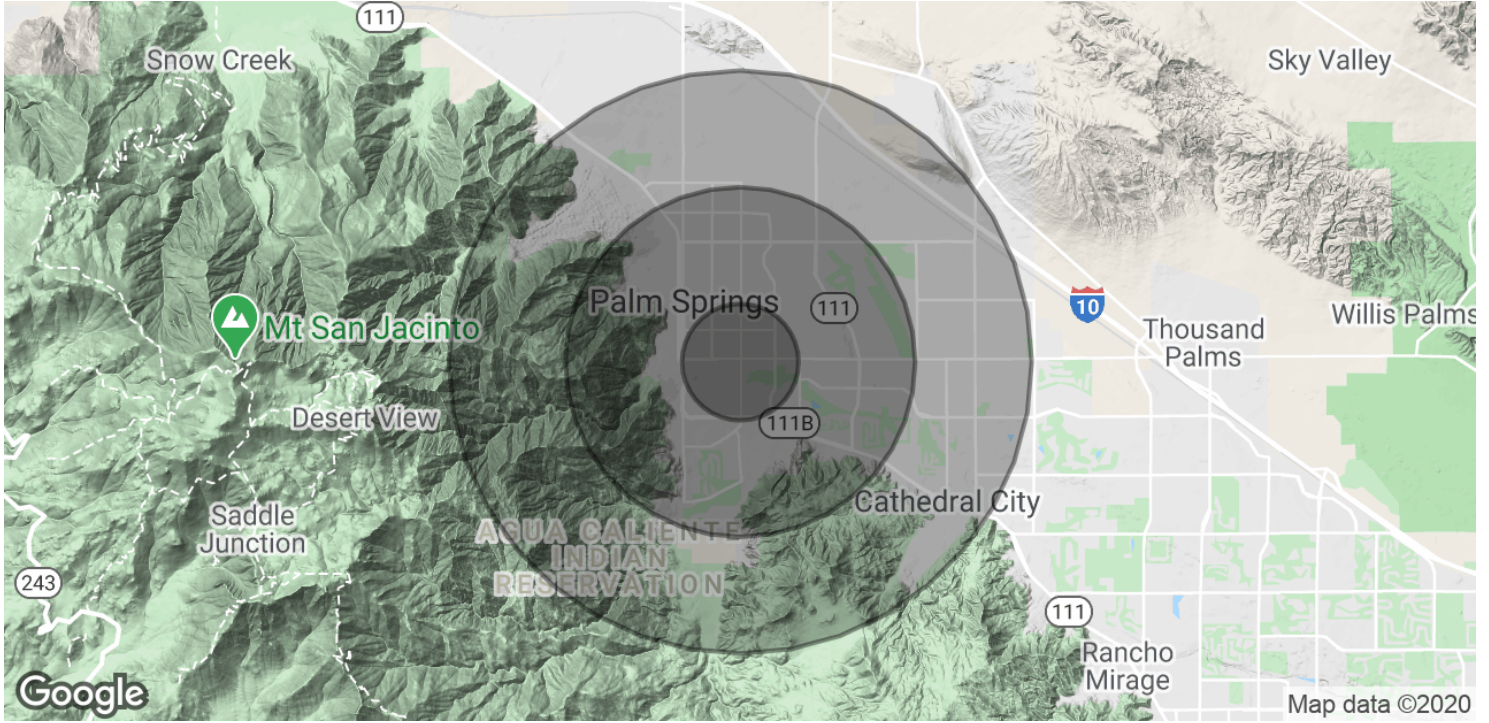
**COLDWELL
BANKER
COMMERCIAL**

LYLE & ASSOCIATES, LP



PLAZA AT SUNRISE (EXECUTIVE OFFICE SUITES)

555 S Sunrise Way, Palm Springs, CA 92264



POPULATION	1 MILE	3 MILES	5 MILES
Total Population	10,111	40,409	92,269
Average age	51.1	49.9	43.0
Average age (Male)	51.7	49.8	43.2
Average age (Female)	50.5	49.9	43.1
HOUSEHOLDS & INCOME	1 MILE	3 MILES	5 MILES
Total households	5,561	20,624	39,742
# of persons per HH	1.8	2.0	2.3
Average HH income	\$61,978	\$64,964	\$63,163
Average house value	\$381,778	\$387,887	\$350,321

* Demographic data derived from 2010 US Census

CBCWORLDWIDE.COM

Rob Wenthold
 760 641 7602
 rwenthold@dc.rr.com
 CalDRE #01153834



LYLE & ASSOCIATES, LP