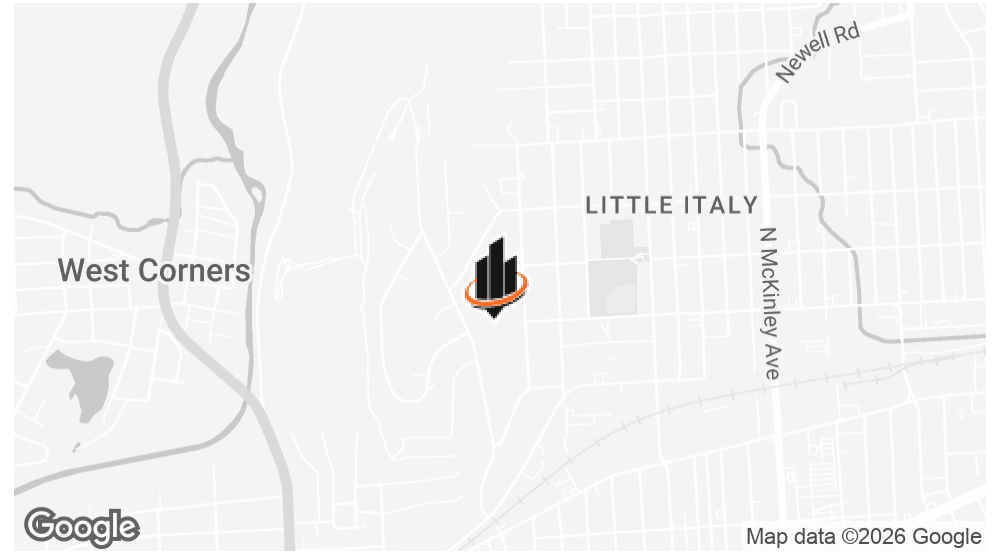


# PROPERTY SUMMARY | 94 SKYE ISLAND DRIVE, ENDICOTT, NY



## OFFERING SUMMARY

<b>SALE PRICE:</b>	<b>\$250,000</b>
<b>LOT SIZE:</b>	14.17 Acres

## PROPERTY DESCRIPTION

Offered for sale is a rare opportunity to acquire over 14 acres of contiguous, developable land at 94 Skye Island in Endicott, New York. The site provides a level of scale and flexibility that is increasingly limited in the current market, making it well suited for a range of residential or mixed-use development concepts.

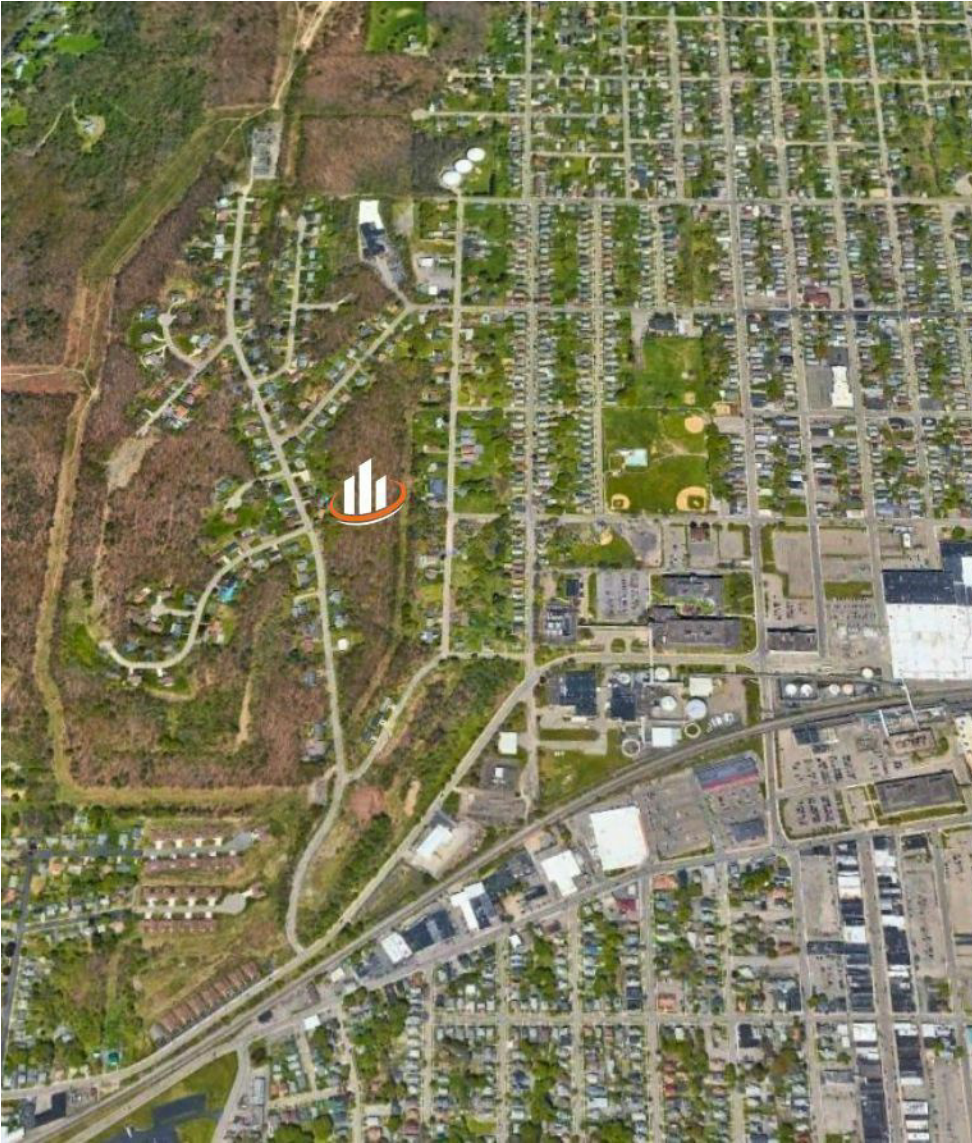
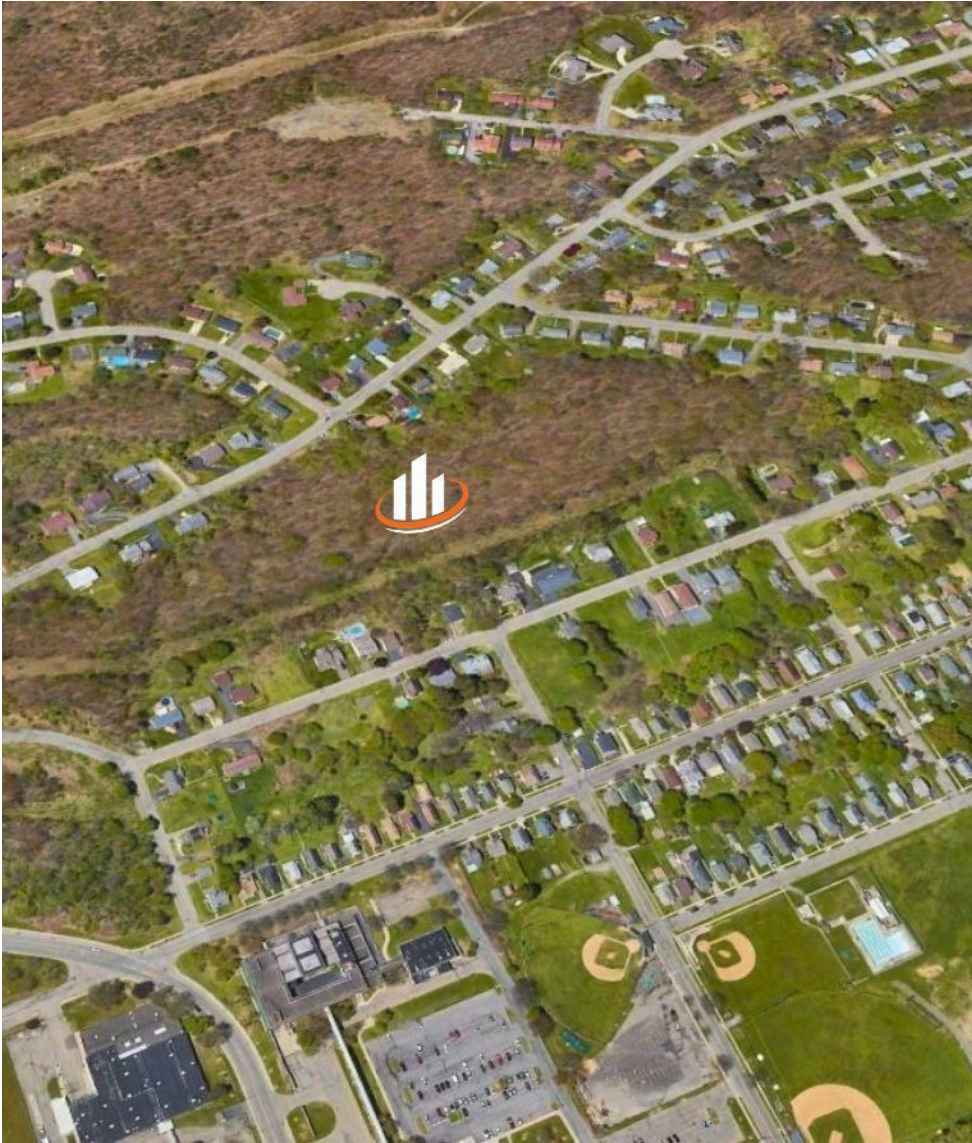
The offering includes a conceptual Planned Unit Development (PUD) plan, providing a clear starting point for evaluating potential layout, density, and overall site design. While the plan is not approved, it offers meaningful direction and reduces early-stage planning time for a developer looking to move efficiently from concept to execution.

Positioned within close proximity to major employment drivers, including IBM Endicott, the property benefits from established infrastructure and consistent regional demand. Combined with its size, location, and forward-looking planning framework, 94 Skye Island represents a strategic development opportunity with both immediate potential and long-term upside.

### SCOTT WARREN, CCIM

O: 607.621.0439  
scott.warren@svn.com  
NY #10491212432

**ADDITIONAL PHOTOS**



**SCOTT WARREN, CCIM**  
O: 607.621.0439  
scott.warren@svn.com  
NY #10491212432