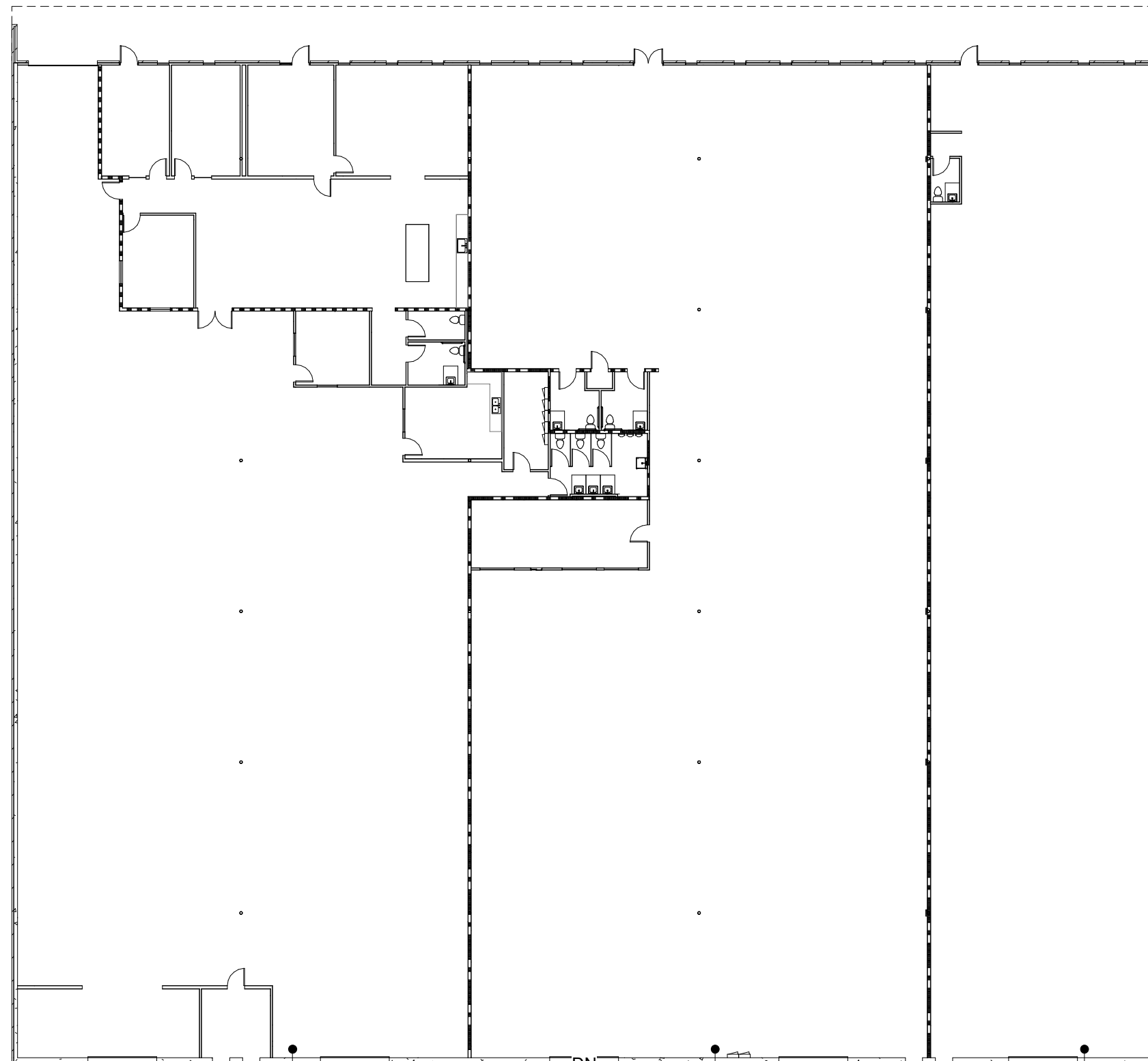


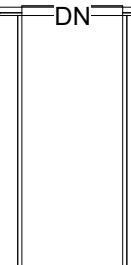
# 3020 COMMERCE WAY

SUITE NUMBER	SUITE USF	MECH RM	RISER RM	PRORATED SF (MECH/RISER)	SUITE RSF TOTAL
		<i>MECH RM + RISER RM (COL C + COL D)</i>		<i>SUITE USF / BLG USF TOTAL * PRORATED SF (COL E)</i>	<i>SUITE USF + PRORATED SF</i>
SUITE A	7,359	-	-	-	7,359
SUITE B	14,283			-	14,283
SUITE C-D	15,520			-	15,520
				-	-
<b>BLD TOTAL</b>	<b>37,162</b>	-		-	<b>37,162</b>

<b>ACTUAL BLG TOTAL</b>	<b>37,162</b>
-----------------------------	---------------



**BELTER TECH**  
 SUITE C-D  
 OFFICE CAD 3,559 USF  
 WAREHOUSE CAD 11,691 USF  
 TOTAL CAD 15,220 USF  
 TOTAL CAD 15,520 RSF



**USA FLOORING OUTLET**  
 SUITE B  
 OFFICE CAD 394 USF  
 WAREHOUSE CAD 13,889 USF  
 TOTAL CAD 14,283 USF  
 TOTAL CAD 14,283 RSF

**TBD**  
 SUITE A  
 OFFICE CAD ---- USF  
 WAREHOUSE CAD 7,359 USF  
 TOTAL CAD 7,359 USF  
 TOTAL CAD 7,359 RSF



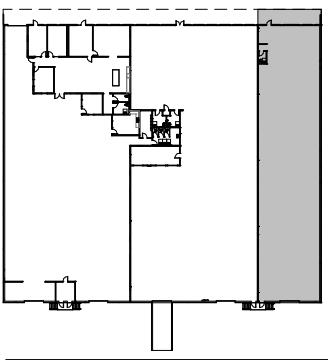
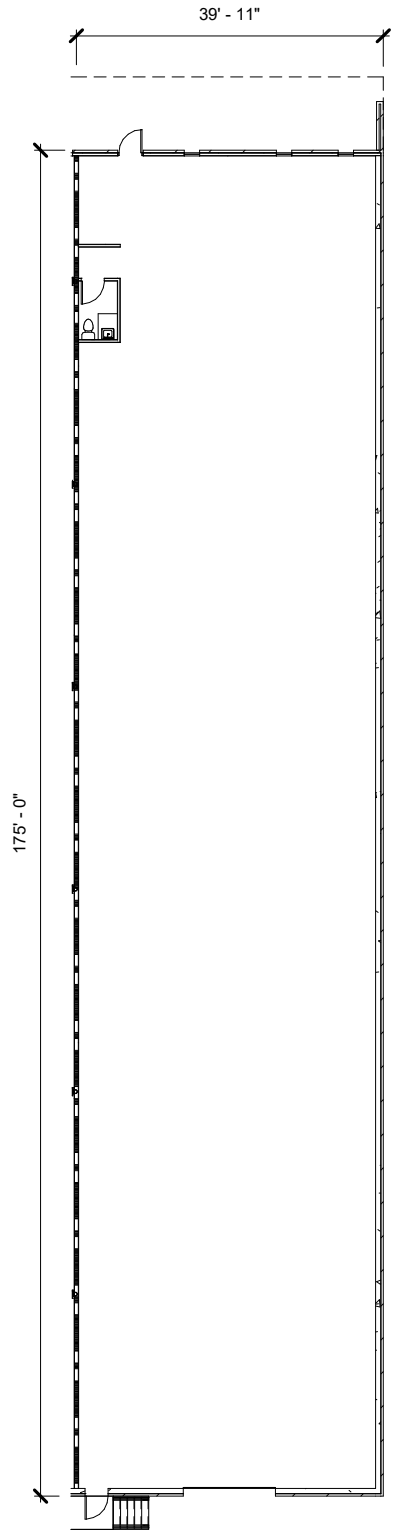
# COMMERCE WAY

3020 COMMERCE WAY  
HAPEVILLE, GA 30354

SUITE A

7,359 SF WAREHOUSE

7,359 RSF TOTAL



**FOR LEASING CONTACT:**

REID HANNER  
404.281.7068

[REID.HANNER@FOUNDRYCOMMERCIAL.COM](mailto:REID.HANNER@FOUNDRYCOMMERCIAL.COM)

**HUGHES TURNER PHILLIPS**  
ARCHITECTURE | INTERIOR DESIGN | SPACE PLANNING

*Information contained herein has been provided to broker by owner or from other sources. We have no reason to doubt its accuracy, but we do not guarantee it. Broker disclaims all expressed or implied responsibilities for omissions, errors, environmental conditions of soil / structure, operating systems, the roof, price and compliance with applicable laws. Suitability for intended use or any other matter is the responsibility of the purchaser or tenant. Prospective purchases or tenants agree to independently obtain and analyze all material information.*

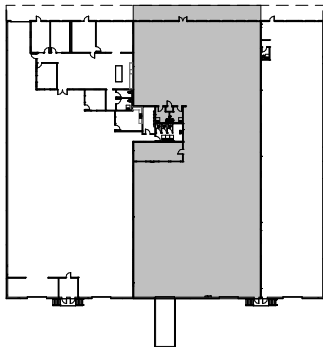
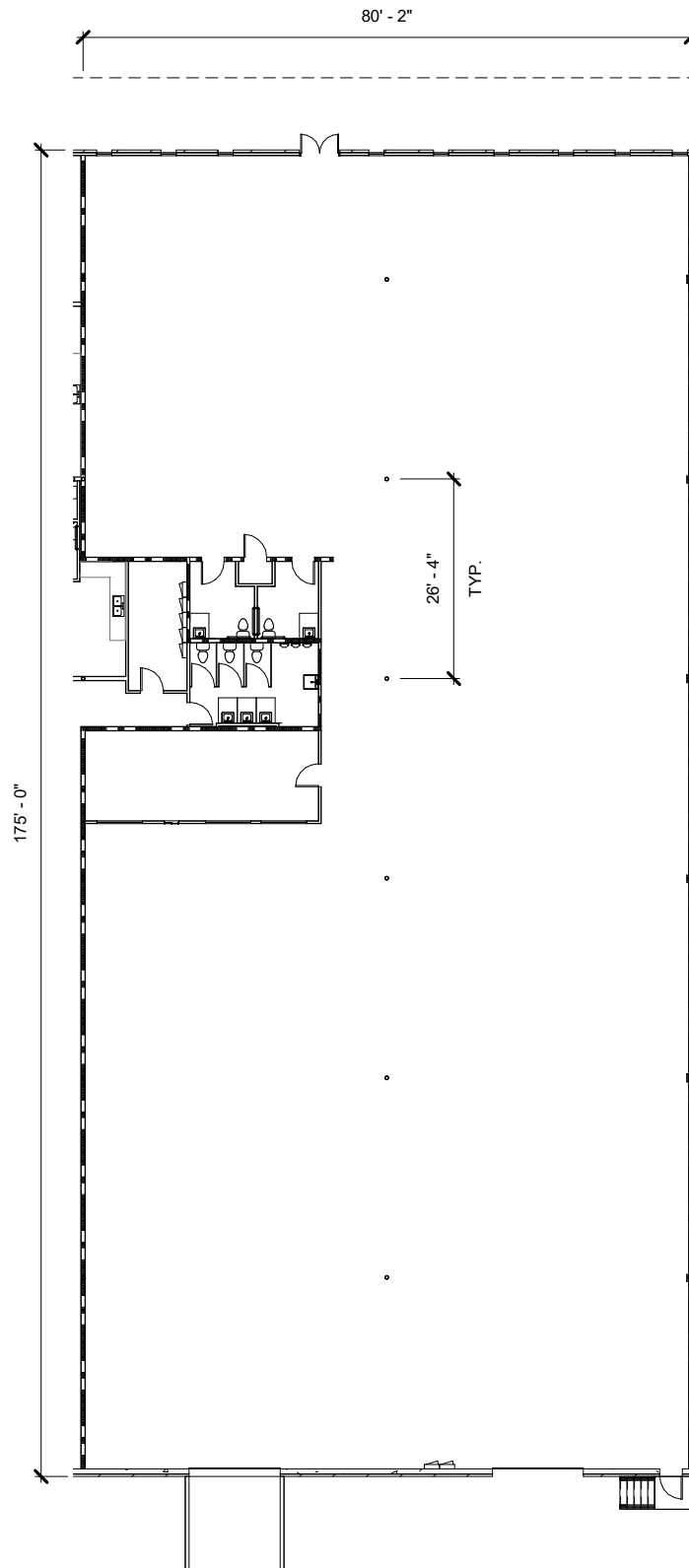
# COMMERCE WAY

3020 COMMERCE WAY  
HAPEVILLE, GA 30354

## SUITE B

394 SF OFFICE  
13,889 SF WAREHOUSE

14,283 RSF TOTAL



### FOR LEASING CONTACT:

REID HANNER  
404.281.7068

[REID.HANNER@FOUNDRYCOMMERCIAL.COM](mailto:REID.HANNER@FOUNDRYCOMMERCIAL.COM)



**HUGHES TURNER PHILLIPS**

ARCHITECTURE | INTERIOR DESIGN | SPACE PLANNING

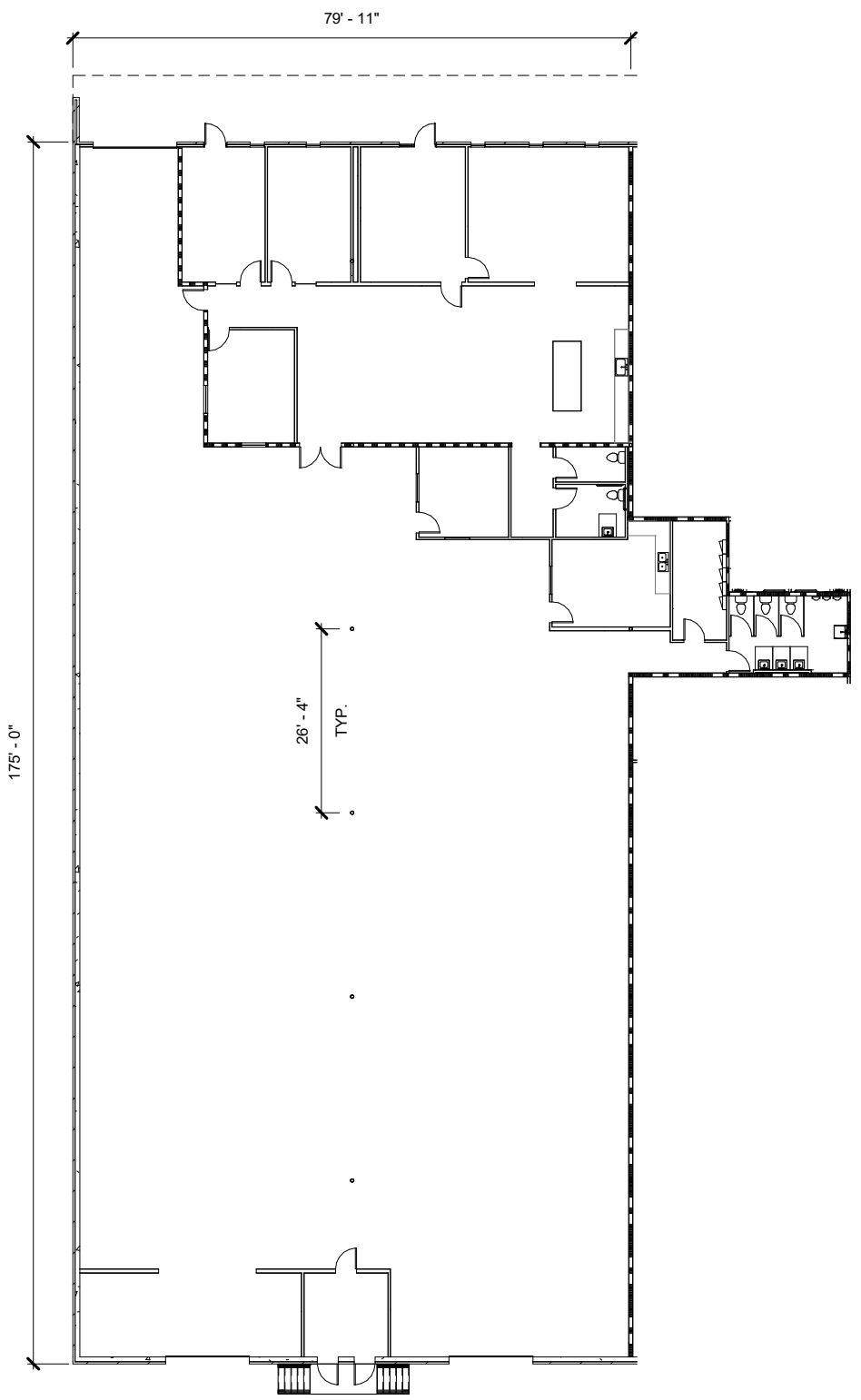
Information contained herein has been provided to broker by owner or from other sources. We have no reason to doubt its accuracy, but we do not guarantee it. Broker disclaims all expressed or implied responsibilities for omissions, errors, environmental conditions of soil / structure, operating systems, the roof, price and compliance with applicable laws. Suitability for intended use or any other matter is the responsibility of the purchaser or tenant. Prospective purchases or tenants agree to independently obtain and analyze all material information.

# COMMERCE WAY

3020 COMMERCE WAY  
HAPEVILLE, GA 30354

SUITE C-D

3,559 SF OFFICE  
11,691 SF WAREHOUSE  
15,520 RSF TOTAL



**FOR LEASING CONTACT:**

REID HANNER  
404.281.7068

[REID.HANNER@FOUNDRYCOMMERCIAL.COM](mailto:REID.HANNER@FOUNDRYCOMMERCIAL.COM)



**HUGHES TURNER PHILLIPS**  
ARCHITECTURE | INTERIOR DESIGN | SPACE PLANNING

*Information contained herein has been provided to broker by owner or from other sources. We have no reason to doubt its accuracy, but we do not guarantee it. Broker disclaims all expressed or implied responsibilities for omissions, errors, environmental conditions of soil / structure, operating systems, the roof, price and compliance with applicable laws. Suitability for intended use or any other matter is the responsibility of the purchaser or tenant. Prospective purchases or tenants agree to independently obtain and analyze all material information.*