




ILLINOIS MEDICAL DISTRICT



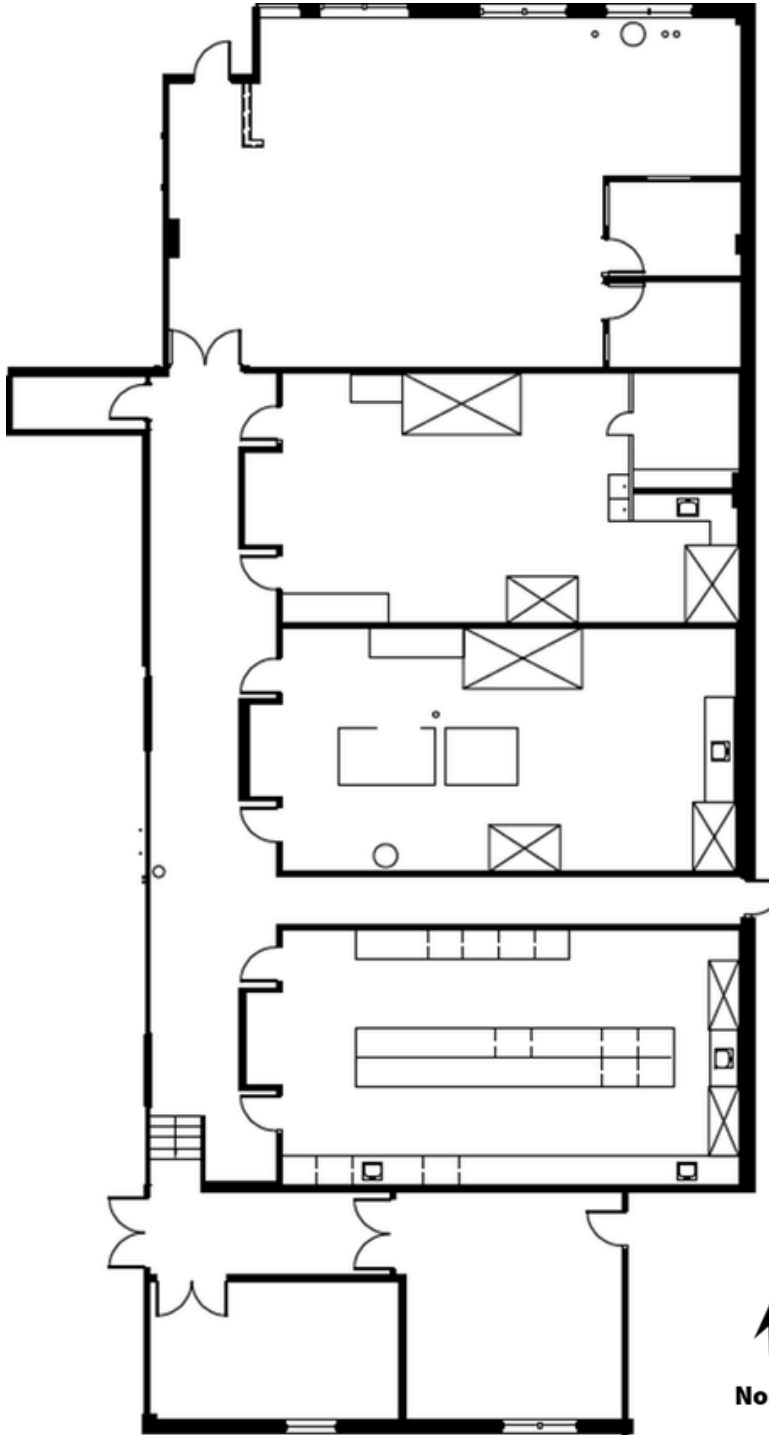
 **JLL** SEE A BRIGHTER WAY

22250 W Harrison Street

Chicago, IL 60612

7,555 RSF Lab Space Available
in the Illinois Medical District

Suite 105 - 7,555 RSF



[Virtual Tour](#)

Amenities

-  Shared Conference Rooms
-  Contiguous Lab Space
-  Ample Parking
-  Located in Illinois Medical District



Move-in Ready for Lab Use

- Benchtop space suitable for tenant specific benchtop equipment
- 2 Hamilton Safeaire Benchtop Hoods
- 4 Hamilton Safeaire Walk in Hoods
- 2 Labconco Walk in Hoods
- 2 Labconco Walk in Hoods
- 1 Double Slop Sink
- 1 Emergency Shower
- 1 Eye Wash Station
- 1 AED
- 1,127 SF temperature controlled shared loading area
 - 1 raised loading dock door
 - 1 grade drive-in door
- Existing Power Supply = 480V 3 Phase
- Sprinkler riser
- 20 Surface Spaces Available



Building Overview

Size 21,658 RSF / 2 Stories

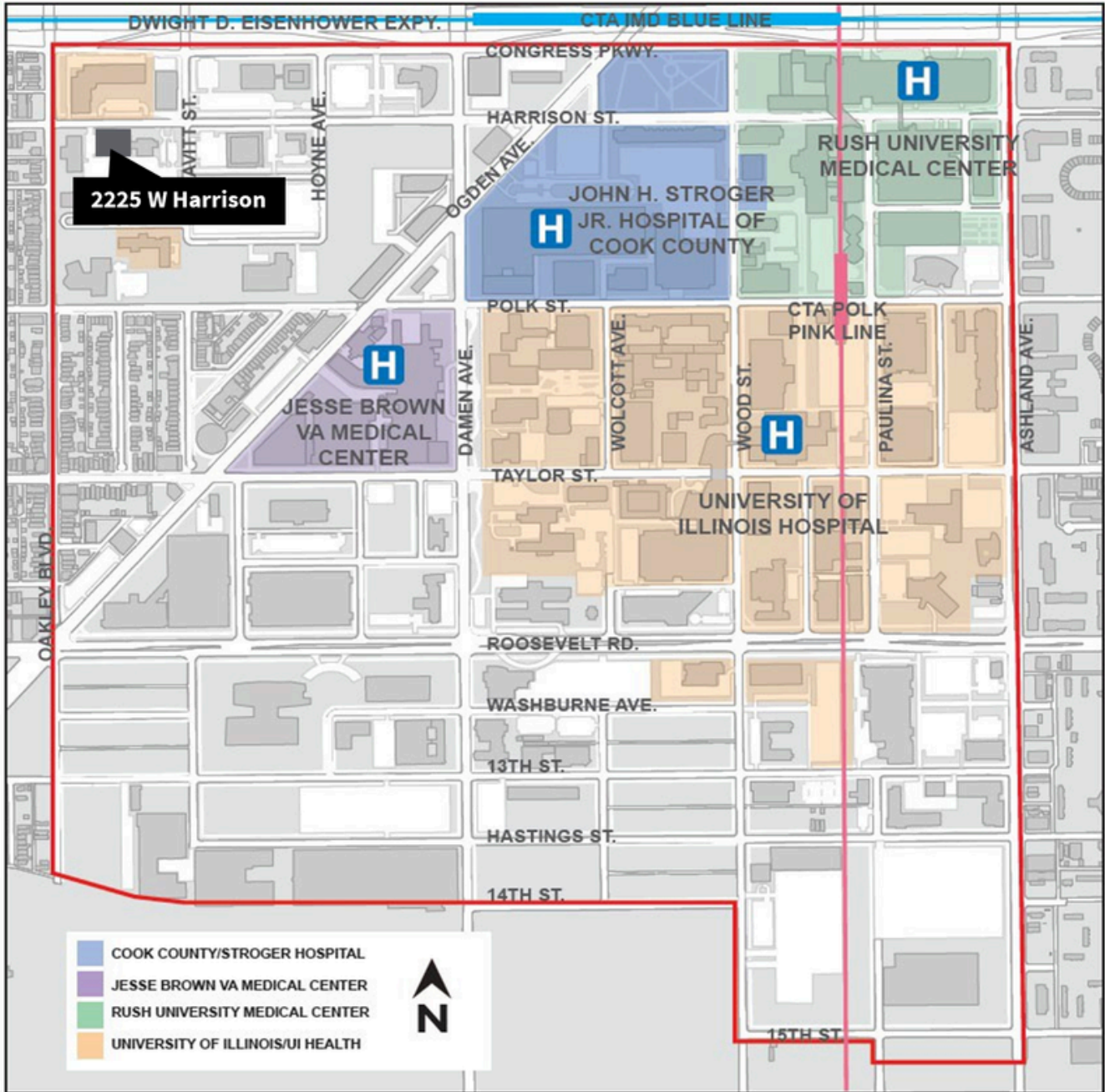
Class B

Floor Size 20,055 RSF

Parking 1.25 per 1,000 RSF

Proximity to Transit Close to Pink and Blue CTA Lines and I-290

Illinois Medical District Area Overview



Max Zwolan
Senior Vice President, JLL
Max.Zwolan@jll.com
+1 734 255 5810

Grace Fangman
Associate, JLL
Grace.Fangman@jll.com
+1 312 245 5010

Sarah Ware
Founder and CEO, Ware Realty Group
Sarah@jwarerealtygroup.com
+1 312 376 1448 x101