

# Long-term sublease available

savills

FOR SUBLEASE

Peak City Building 12, 2030 Energy Drive, Apex, NC 27502



## SPACE PROFILE

9,700 SF

Total SF

\$21.00 / SF, NNN

Rental rate

8/31/2032

Term

Immediate

Availability

24 Spaces

Dedicated Parking

2024

Year Built

FF&E

Available

Private, serene

Setting



**PROPERTY OVERVIEW**

- Peak City Business Park is a 42-acre mixed use project
- Full building opportunity
- Building parapet signage available
- Video surveillance
- UPS/FedEx drop boxes
- Dedicated property management team
- Walking trails
- Bike trails and racks
- Ample surface parking
- Convenient highway access
- Neighboring tenants include:
  - TWT Engineering
  - Health Solutions NC
  - NCNeuropsychiatry
  - State Farm
  - Weston & Sampson
  - IKC Learning Center
  - Roy Electric LLC
  - Aruza Pest Control



**GROUND FLOOR**

9,700SF

Large warm vanilla shell open area with abundant natural light



Main Entrance

CHANGE TO 2 OFFICE FURNITURE SETS

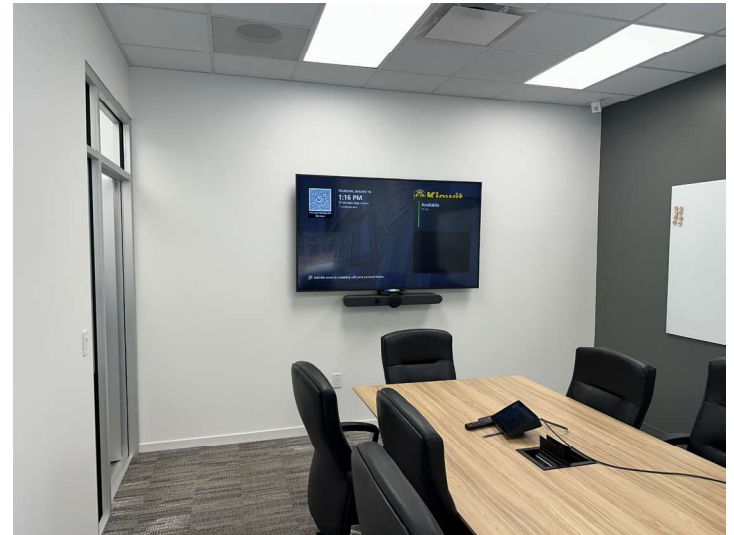
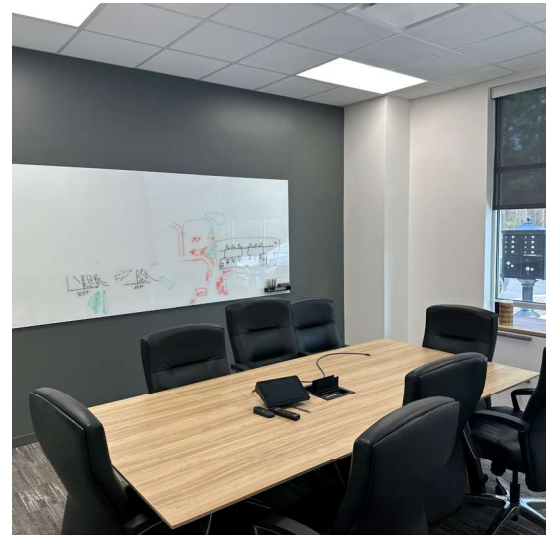
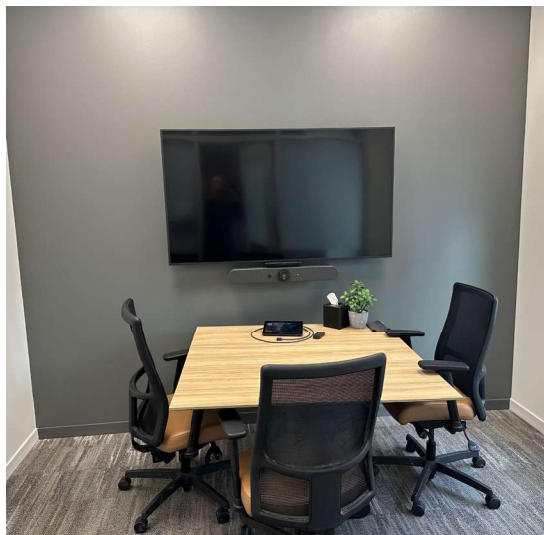
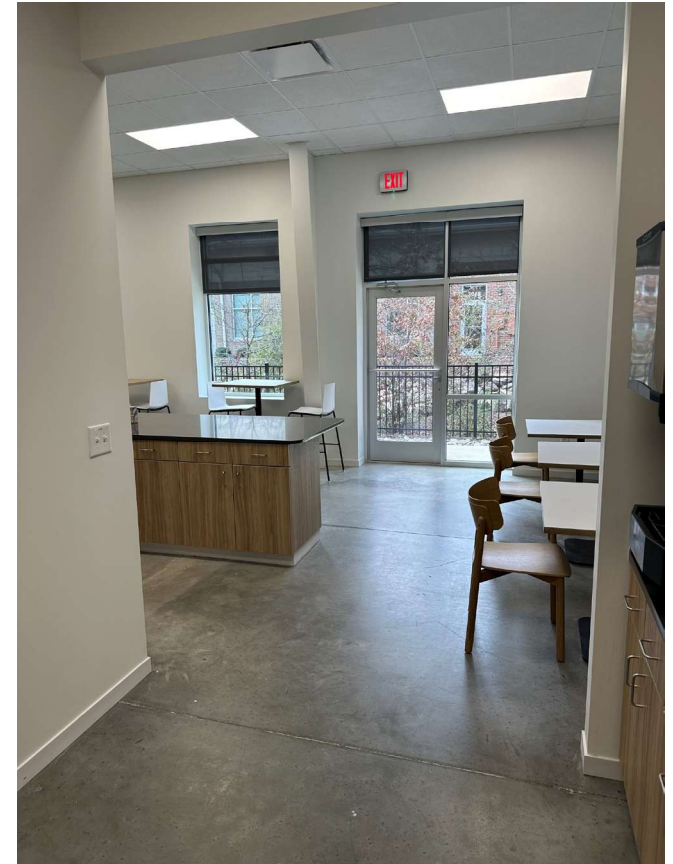
**OFFICE LAYOUT**

- Workstations: 15
- Offices: 6
- Reception: 1
- Total Seats: 22**
- 1 Large Conference Room
- 1 Medium Conference Room
- 2 Small Meeting Rooms
- Large Kitchen / Break Area
- Private Restrooms
- Wellness Room



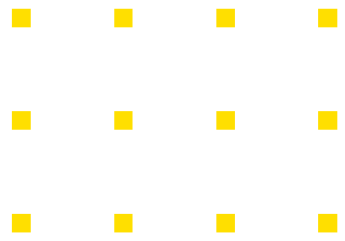
OVERHEAD VIEW

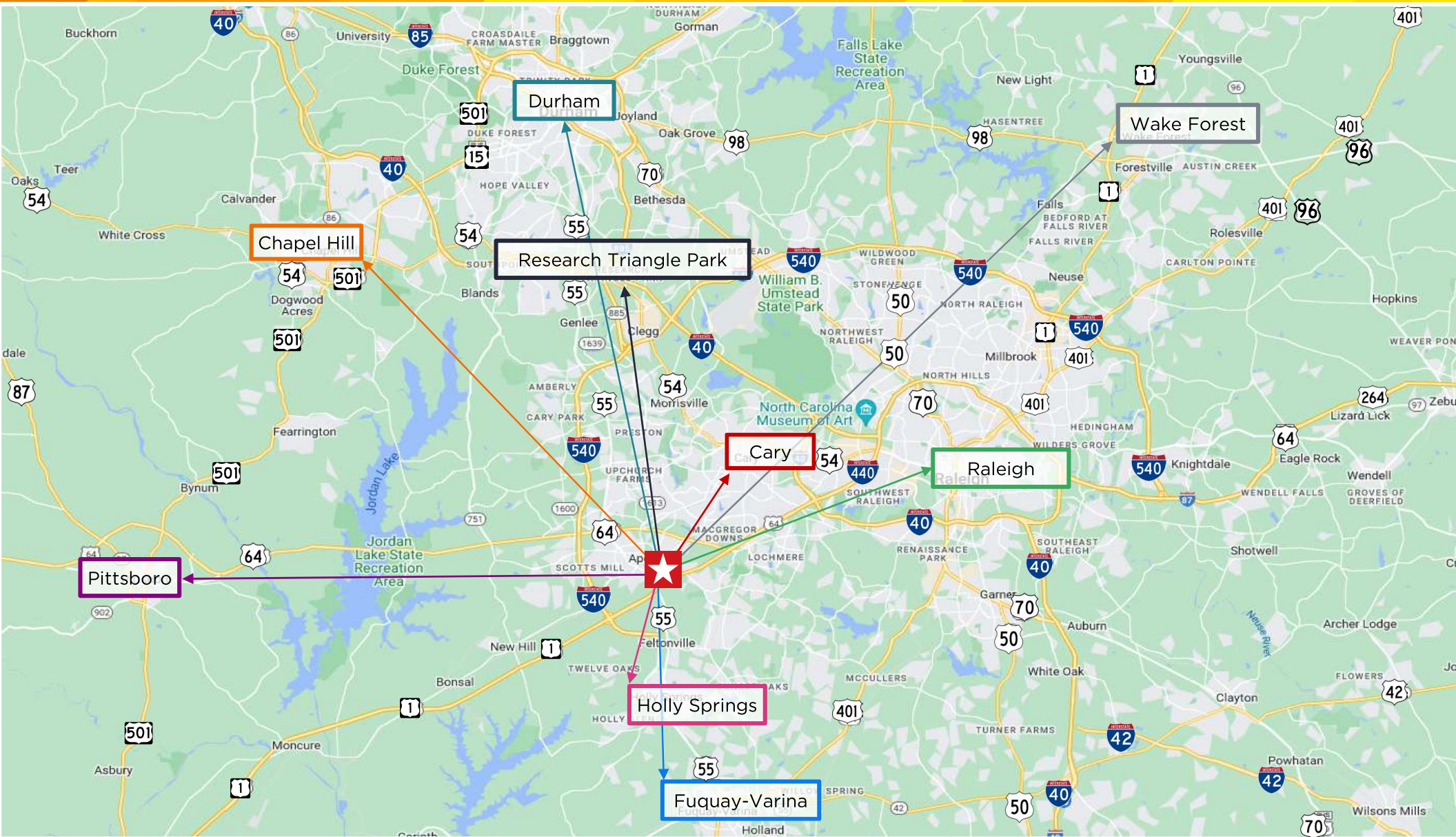




2030 Energy Drive

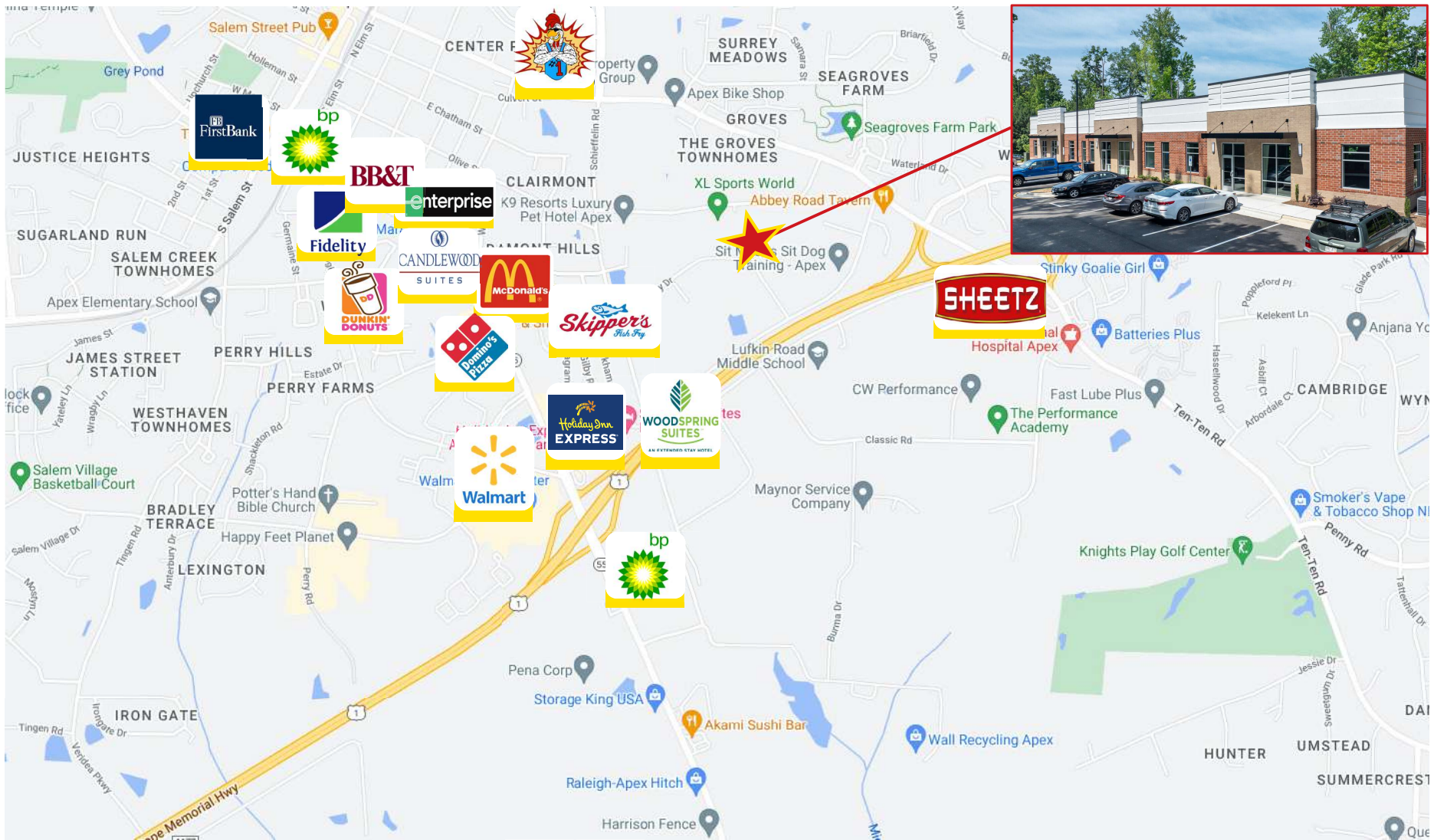
Peak City Business Park is conveniently located within the southwest Wake County submarket. Surrounded by numerous retail and dining options, offering quick access to I-540, US 1, HWY 55 and HYW 64.





**LOCATION OVERVIEW**

- 11.2 Miles to Raleigh
- 18.0 Miles to Chapel Hill
- 5.4 Miles to Cary
- 2.7 Miles to I-540
- 19.2 Miles to Durham
- 19.4 Miles to Pittsboro
- 5.4 Miles to Holly Springs
- 5.8 Miles to I-40
- 12.3 Miles to RTP
- 24.9 miles to Wake Forest
- 9.8 Miles to Fuquay Varina
- 11.6 miles to HWY-70



**Matthew Patterson**  
 Managing Director  
 +1 646 512 0991  
 mpatterson@savills.us

**David Kimball**  
 Managing Principal  
 +1 310 489 4549  
 dkimball@cresa.com

**Tucker Shade**  
 Executive Vice President  
 +1 919 210 2916  
 tshade@savills.us

**Audrey Stiefel**  
 Associate  
 +1 336 543 5876  
 astiefel@savills.us



The information contained in this communication has been obtained from a variety of sources believed to be reliable but has not been verified. NO WARRANTY OR REPRESENTATION, EXPRESS OR IMPLIED, IS MADE AS TO THE CONDITION OF THE PROPERTY OR ACCURACY OR COMPLETENESS OF THE INFORMATION CONTAINED HEREIN AND SAME IS SUBMITTED SUBJECT TO ERRORS, OMISSIONS, CHANGE OF PRICE, RENTAL OR OTHER CONDITIONS, WITHDRAWAL WITHOUT NOTICE AND TO ANY SPECIFIC CONDITIONS IMPOSED BY THE PROPERTY OWNER OR LESSOR.