

16238 PLYMOUTH ROAD
DETROIT, MICHIGAN



**SIGNATURE
ASSOCIATES**
KNOW SIGNATURE | KNOW RESULTS

RETAIL FOR SALE
5,792 Square Feet Available



PROPERTY FEATURES

- 5,792 square feet available
- 12' clear height
- Street parking
- Free span building with new utilities
- Sale Price: \$350,000 (\$60.43/ sq. ft.)



For more information, please contact:

JOE STACK
(248) 359 0615
jstack@signatureassociates.com

CHRIS MONSOUR
(248) 948 0107
cmonsour@signatureassociates.com

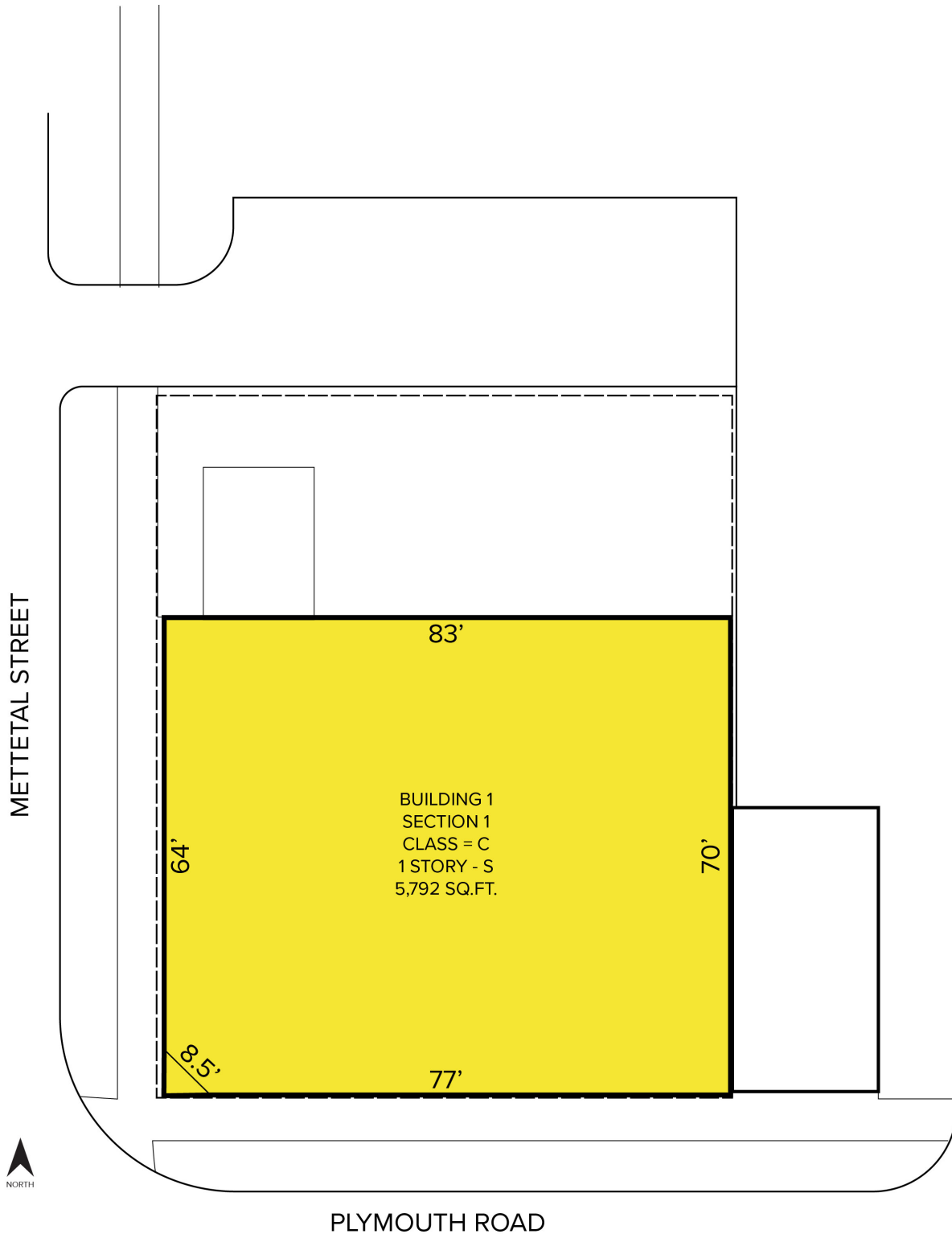
SIGNATURE ASSOCIATES
One Towne Square, Suite 1200
Southfield, MI 48076
www.signatureassociates.com

16238 Plymouth Road – Detroit, Michigan

Retail For Sale

5,792
Square Feet
AVAILABLE

Site Plan



For more information, please contact:

JOE STACK
(248) 359 0615
jstack@signatureassociates.com

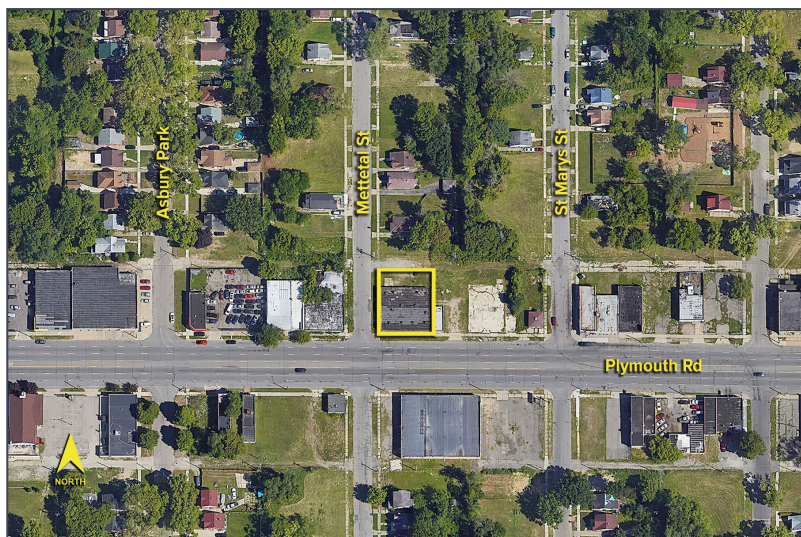
CHRIS MONSOUR
(248) 948 0107
cmonsour@signatureassociates.com

SIGNATURE ASSOCIATES
One Towne Square, Suite 1200
Southfield, MI 48076
www.signatureassociates.com

16238 Plymouth Road – Detroit, Michigan

Retail For Sale

5,792
Square Feet
AVAILABLE

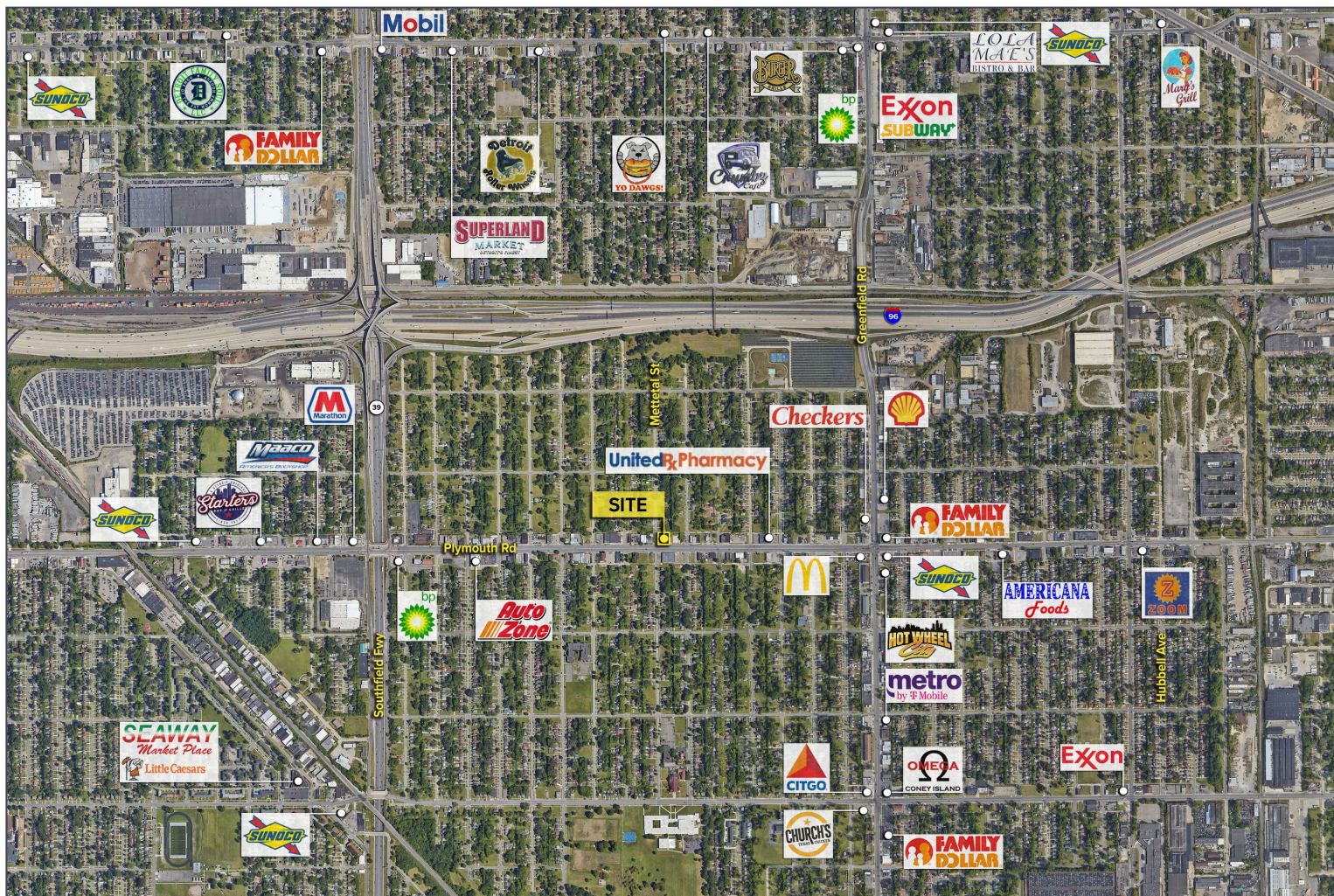


DEMOGRAPHICS

	POPULATION	MED. HH INCOME
1 MILE	15,496	\$37,402
3 MILE	162,413	\$41,549
5 MILE	412,277	\$46,148

TRAFFIC COUNTS (TWO-WAY)

14,458	Plymouth Rd. E of M-39
16,633	Plymouth Rd. W of M-39
145,090	M-39 S of Plymouth Rd.
135,333	M-39 N of Plymouth Rd.



For more information, please contact:

JOE STACK
(248) 359 0615
jstack@signatureassociates.com

CHRIS MONSOUR
(248) 948 0107
cmonsour@signatureassociates.com

SIGNATURE ASSOCIATES
One Towne Square, Suite 1200
Southfield, MI 48076
www.signatureassociates.com