

**OFFICE SUITES
AVAILABLE
FOR LEASE**



CHAPARRAL CENTER

28459 OLD TOWN FRONT STREET
TEMECULA

PROPERTY FEATURES

- Suite 215: 1,878 SF & Suite 225: 452 SF Available
- Premier Old Town Temecula Location
- Elevator Served
- On-Site Parking
- Walking Distance From Crafted Scone Restaurants, Shopping & Post Office
- Views of Old Town and Santa Rosa Foothills
- Strategically Located At The Gateway to Old Town Temecula & At The Heart Of The Activity & In Close Proximity To Public Parking
- The City of Temecula Attracts Approximately 3.1 Million Visitors On Average Annually Throughout Southern California Making It Old Town Temecula A Prime Destination For Travelers & Locals Alike

MIKE HANNA

951.445.4503
mhanna@leetemecula.com
DRE# 01456055

MARY PIPER

951.445.4516
mpiper@leetemecula.com
DRE# 01268829



No warranty or representation has been made to the accuracy of the foregoing information. Terms of sale or lease and availability are subject to change or withdrawal without notice. Lee & Associates Commercial Real Estate Services, Inc. - Riverside. 25240 Hancock Avenue, Suite 100 - Murrieta, CA 92562 | Corporate ID# 01048055

DEMOGRAPHICS

3-mile radius

Population	52,875
Average Household Income	\$128,087
Households	18,776
Median Household Income	\$108,119
Daytime Population	53,890
Median Age	37.1

TRAFFIC COUNTS

16,210 CPD

Old Town Front St.

CHAPARRAL CENTER

28459 OLD TOWN FRONT STREET
TEMECULA



**1,750 UNITS
UNDER CONSTRUCTION**



MIKE HANNA

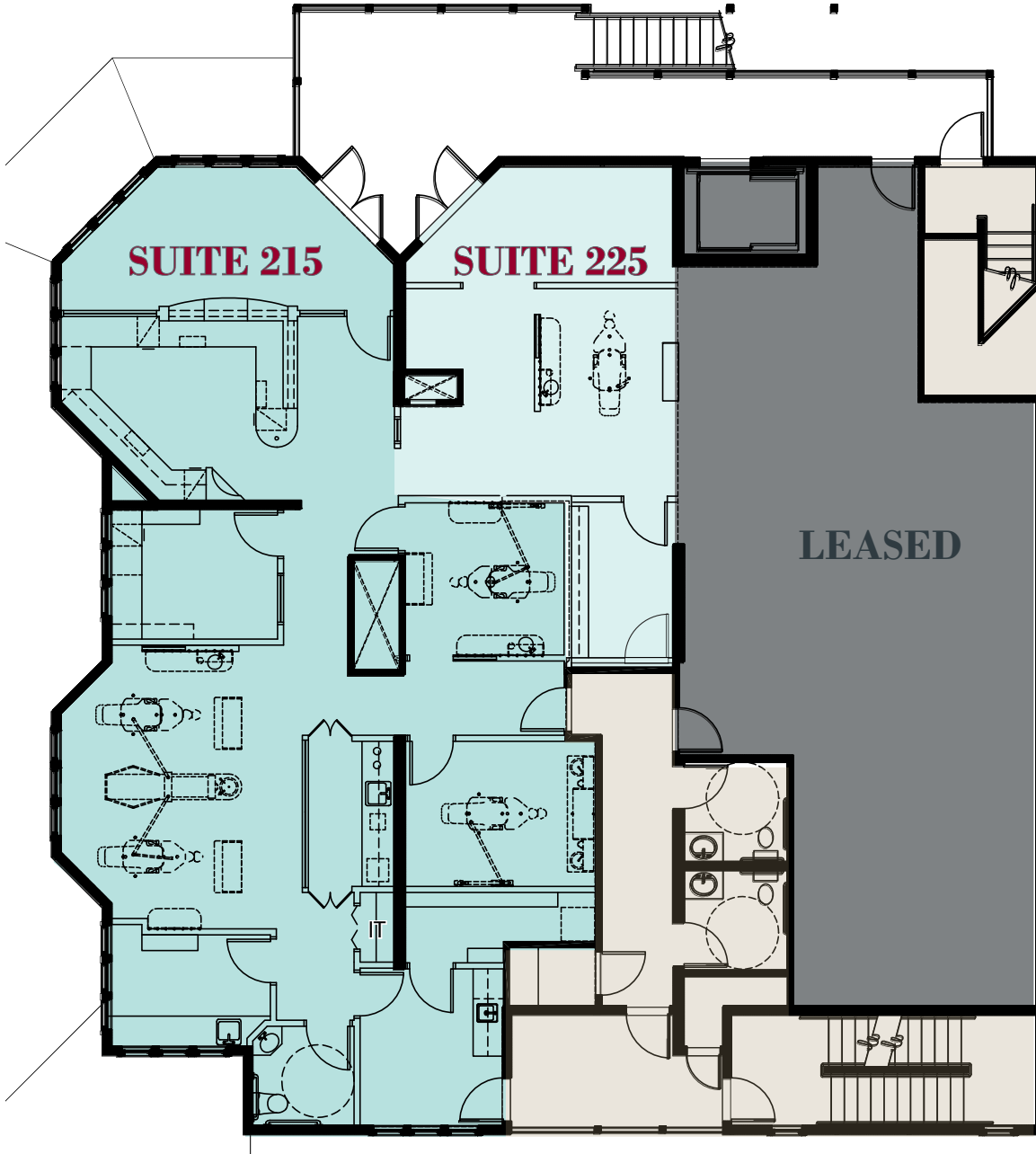
951.445.4503
mhanna@leetemecula.com
DRE# 01456055

MARY PIPER

951.445.4516
mpiper@leetemecula.com
DRE# 01268829



No warranty or representation has been made to the accuracy of the foregoing information. Terms of sale or lease and availability are subject to change or withdrawal without notice. Lee & Associates Commercial Real Estate Services, Inc. - Riverside. 25240 Hancock Avenue, Suite 100 - Murrieta, CA 92562 | Corporate ID# 01048055

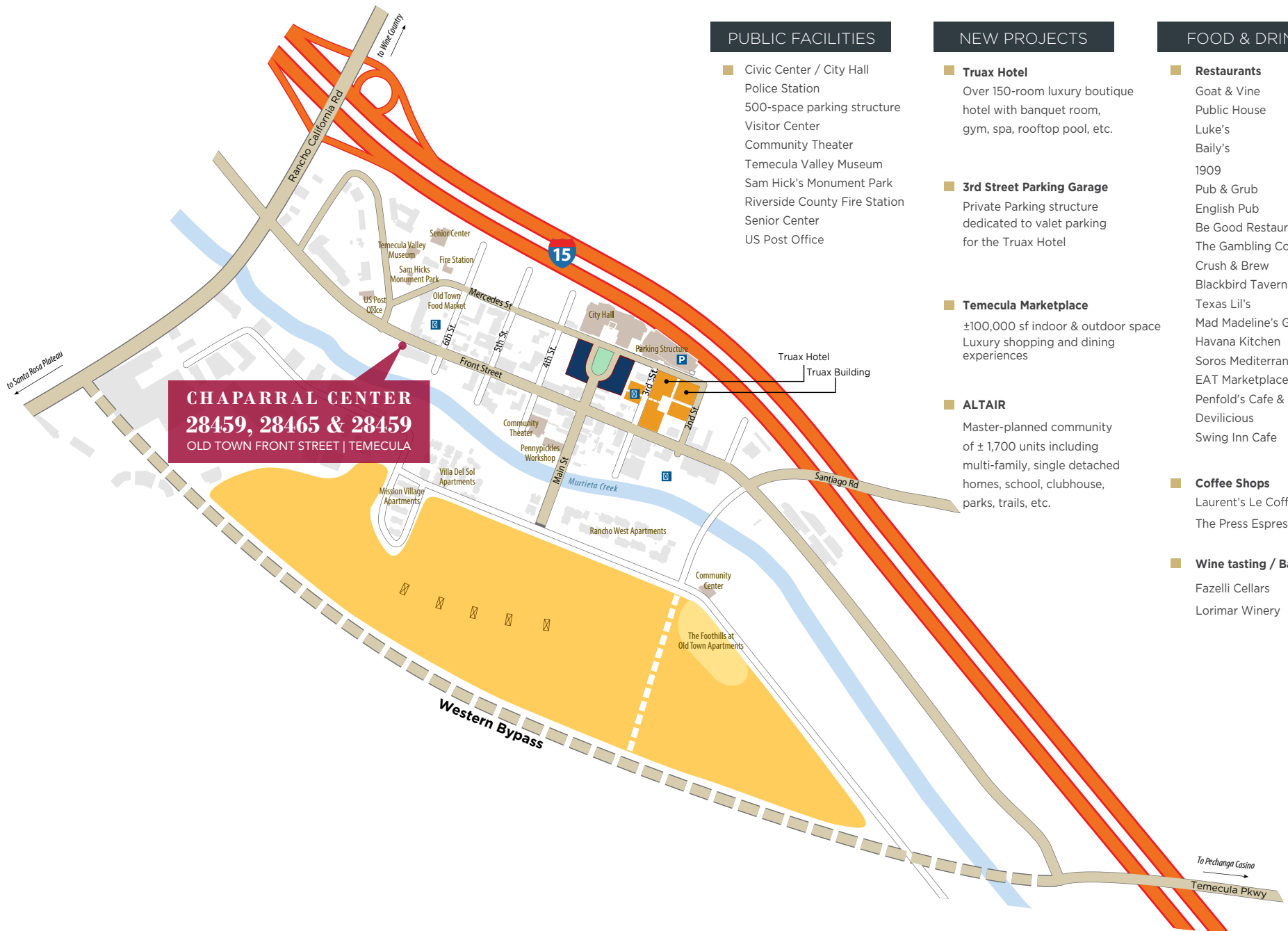


BUILDING #	SUITE	RSF	MONTHLY RENT	DESCRIPTION	AVAILABLE
28459 Old Town Front St.	215	1,878 RSF	\$2.70 PSF/ MG*	see floorplan	Available 12/31/26
28459 Old Town Front St.	225	452 RSF	\$2.70 PSF/ MG*	see floorplan	Available 12/31/26
SUITES CAN BE COMBINED					
(MG - Modified Gross excludes electricity & janitorial to premises) Do Not Disturb Tenant - Contact Agent for Touring Instructions.					

CHAPARRAL CENTER

28459 OLD TOWN FRONT STREET
TEMECULA

AMENITIES



CHAPARRAL CENTER
28459, 28465 & 28459
OLD TOWN FRONT STREET | TEMECULA

PUBLIC FACILITIES

- Civic Center / City Hall
- Police Station
- 500-space parking structure
- Visitor Center
- Community Theater
- Temecula Valley Museum
- Sam Hick's Monument Park
- Riverside County Fire Station
- Senior Center
- US Post Office

NEW PROJECTS

- **Truax Hotel**
Over 150-room luxury boutique hotel with banquet room, gym, spa, rooftop pool, etc.
- **3rd Street Parking Garage**
Private Parking structure dedicated to valet parking for the Truax Hotel
- **Temecula Marketplace**
±100,000 sf indoor & outdoor space
Luxury shopping and dining experiences
- **ALTAIR**
Master-planned community of ± 1,700 units including multi-family, single detached homes, school, clubhouse, parks, trails, etc.

FOOD & DRINKS

- **Restaurants**
Goat & Vine
Public House
Luke's
Baily's
1909
Pub & Grub
English Pub
Be Good Restaurant
The Gambling Cowboy
Crush & Brew
Blackbird Tavern
Texas Lil's
Mad Madeline's Grill
Havana Kitchen
Soros Mediterranean Grill
EAT Marketplace & Eatery
Penfold's Cafe & Bakery
Devilicious
Swing Inn Cafe
- **Coffee Shops**
Laurent's Le Coffee Shop
The Press Espresso
- **Wine tasting / Bars**
Fazelli Cellars
Lorimar Winery



MERCEDES ST

6TH ST

TEMECULA WINE & BEER GARDEN



OLD TOWN FRONT ST

ENTRANCE TO OLD TOWN TEMECULA

CHAPARRAL CENTER
28459, 28465 & 28459
 OLD TOWN FRONT STREET | TEMECULA



MIKE HANNA

951.445.4503

mhanna@leetemecula.com

DRE# 01456055

MARY PIPER

951.445.4516

mpiper@leetemecula.com

DRE# 01268829



No warranty or representation has been made to the accuracy of the foregoing information. Terms of sale or lease and availability are subject to change or withdrawal without notice. Lee & Associates Commercial Real Estate Services, Inc. - Riverside. 25240 Hancock Avenue, Suite 100 - Murrieta, CA 92562 | Corporate ID# 01048055