

Likewise



For Lease



**EXCELLENT BAR/RETAIL
SPACE IN DOWNTOWN AVL**

81 Coxe Avenue, Asheville, NC 28801

Likewise
COMMERCIAL REAL ESTATE

Stacy Wheeler LISTING BROKER

423.504.8167 | stacy@likewisecommercial.com | likewisecommercial.com



OFFERING SUMMARY

LEASE PRICE \$26/SF NNN

BUILDING SIZE ± 2,906 SF

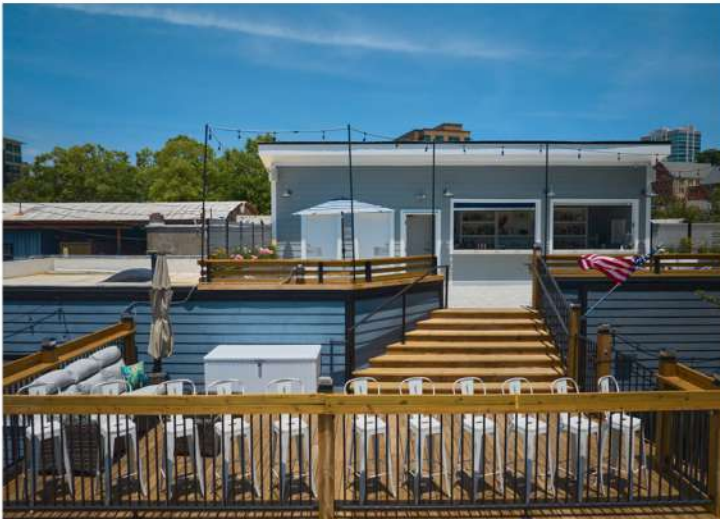
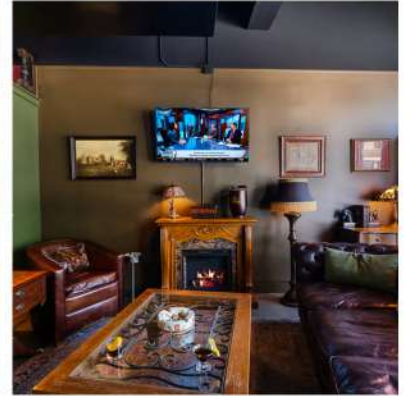
ZONING CBD

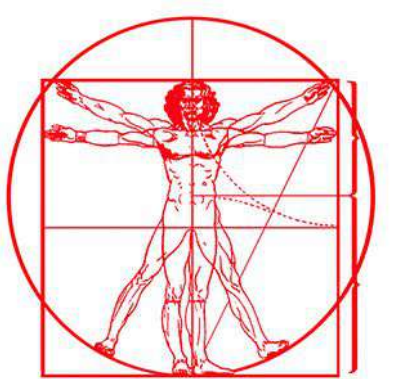


PROPERTY FEATURES

- Highly visible in prime location **in the heart of downtown Asheville**, adjacent to a busy, signalized intersection
- Steps from Asheville Yards music venue and vibrant South Slope
- **Modern amenities**, including radiant floor heating
- **Newly constructed rooftop bar**, spacious patio and additional restrooms
- **Walkable** to established Asheville shops and restaurants like Wicked Weed Funkatorium, Chai Pani, and Bear's BBQ
- MLS# 4318180





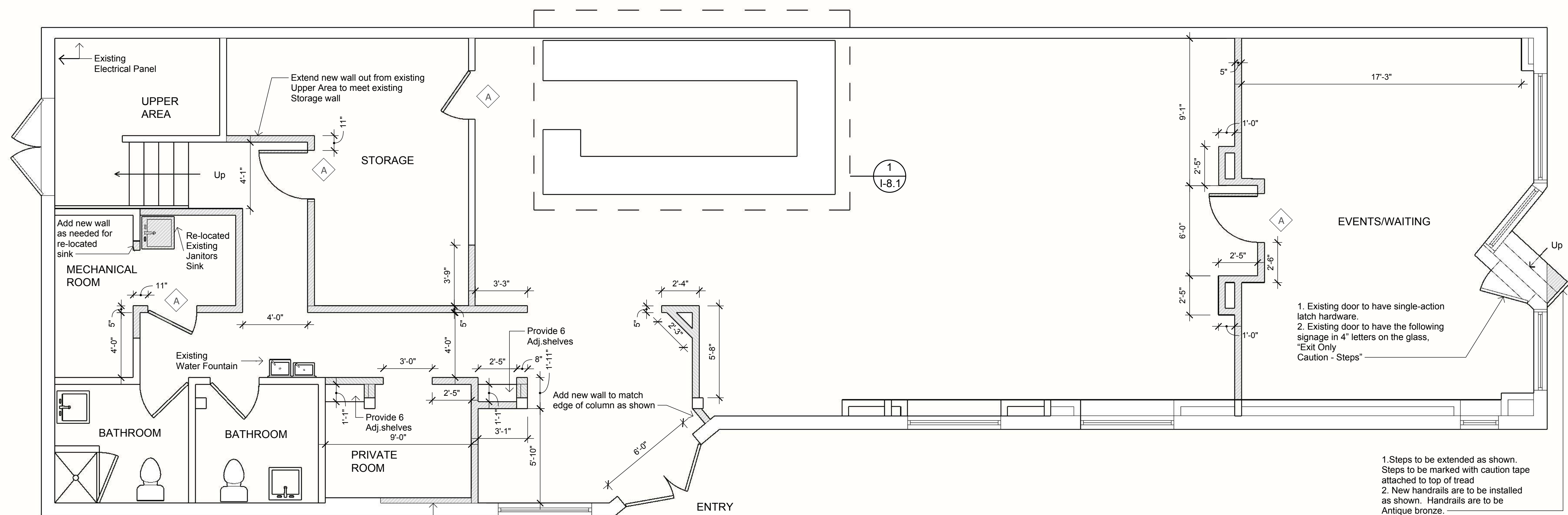


Design Logic, Inc.

PO. Box 1627
Fletcher, NC 28732
828 - 654 - 8851
http://www.dlogicinc.com

Project:

Tenant to Verify Square Footage



DIMENSIONAL PLAN KEY:	
SYMBOL	DESCRIPTION
	DENOTES WALLS TO BE ADDED NEW
	DENOTES WALLS THAT ARE EXISTING
	DRAWING NUMBER DENOTES ELEVATIONS PAGE NUMBER
	DRAWING NUMBER DENOTES BLOW UP PLANS PAGE NUMBER
	DRAWING NUMBER DENOTES SECTIONS PAGE NUMBER
	NEW DOOR SYMBOL

NOTES:

- ALL SHELVING (B/O) UNLESS NOTED
- ALL CEILINGS TO BE PAINTED BLACK.
- ALL NEW WALL HEIGHTS ARE 8'-6" UNLESS OTHERWISE NOTED.
- ALL UNDER-COUNTER BAR EQUIPMENT B/O UNLESS OTHERWISE NOTED (See I-8.1).
- ALL SHELVING TO BE PLASTIC LAMINATE ADJUSTABLE SHELVES.
- ALL NEW WALLS TO HAVE A 1X6 TOP CAP ON TOP OF WALLS.

DOOR SCHEDULE:

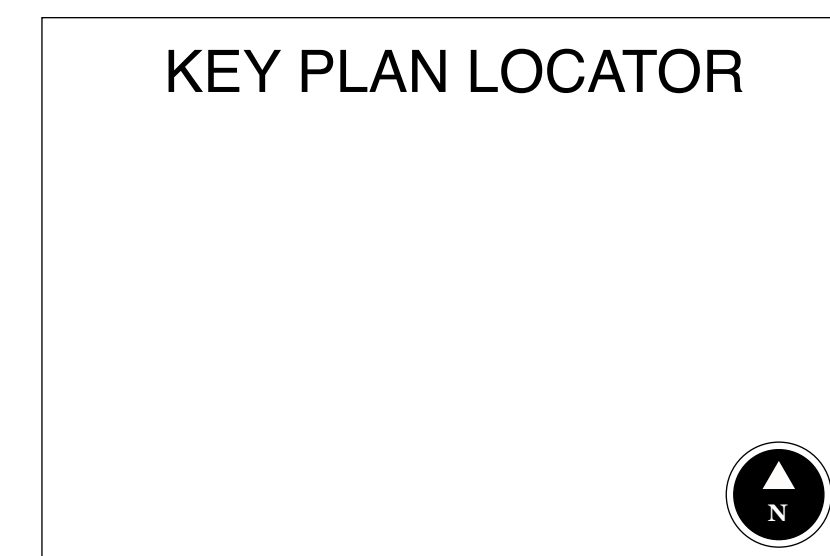
SYMBOL	DESCRIPTION
	NEW 3'-0" WIDE X 6'-8" HIGH SOLID PANEL INTERIOR DOOR. HARDWARE TO ANTIQUE BRONZE, LEVER ACTION WITH ANTIQUE BRONZE HINGES.

NEW DIMENSIONAL PLAN

Boomers Bourbon and Cigars

81 Coxe Avenue
Asheville, North Carolina

Project No:
Drawn By: DGF
Date: 11-15-2018
Revisions:
3-18-2019
4-26-2019



Copyright - The designs and plans represented on these drawings are the sole property of this firm and were developed for use in connection with the specified project. None of the represented drawings shall be reproduced for use by any person, firm, or corporation for any purpose whatsoever without written permission of this firm.

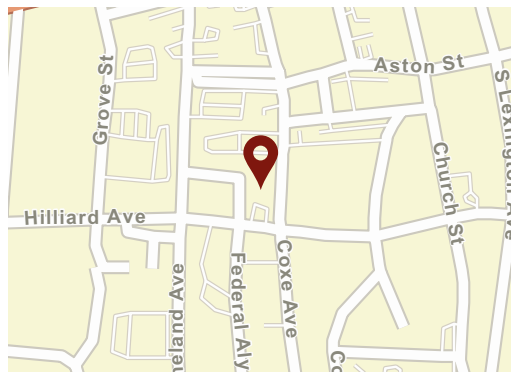
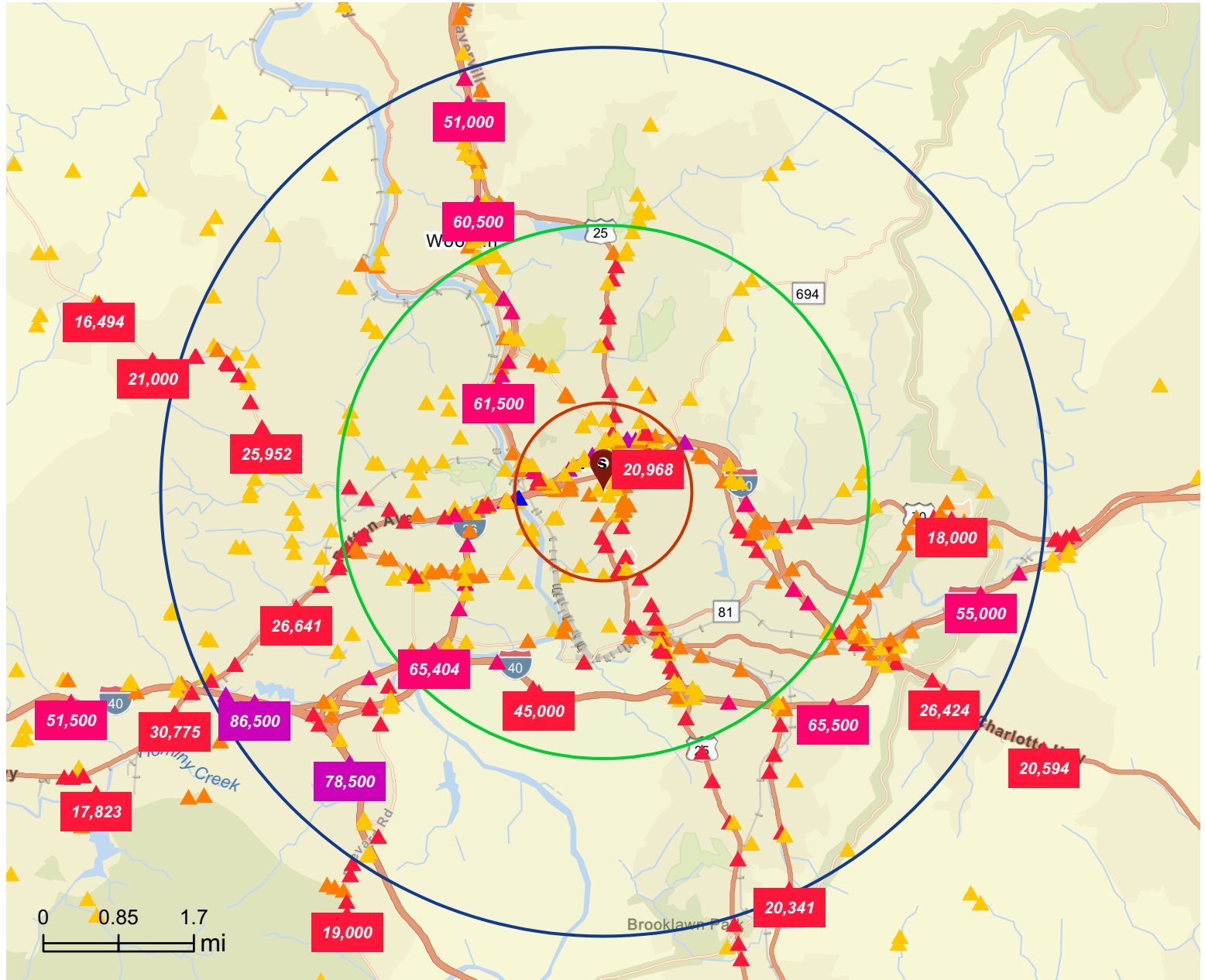
Scale: 1/4" = 1'-0"

Sheet No:

Traffic Count Map

81 Coxe Ave, Asheville, North Carolina, 28801

Rings: 1, 3, 5 mile radii



Average Daily Traffic Volume

- ▲ Up to 8,000 vehicles per day
- ▲ 8,001 - 15,000
- ▲ 15,001 - 50,000
- ▲ 50,001 - 70,000
- ▲ 70,001 - 100,000
- ▲ More than 100,000 per day

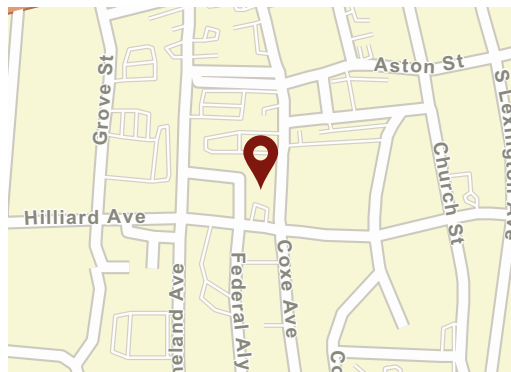
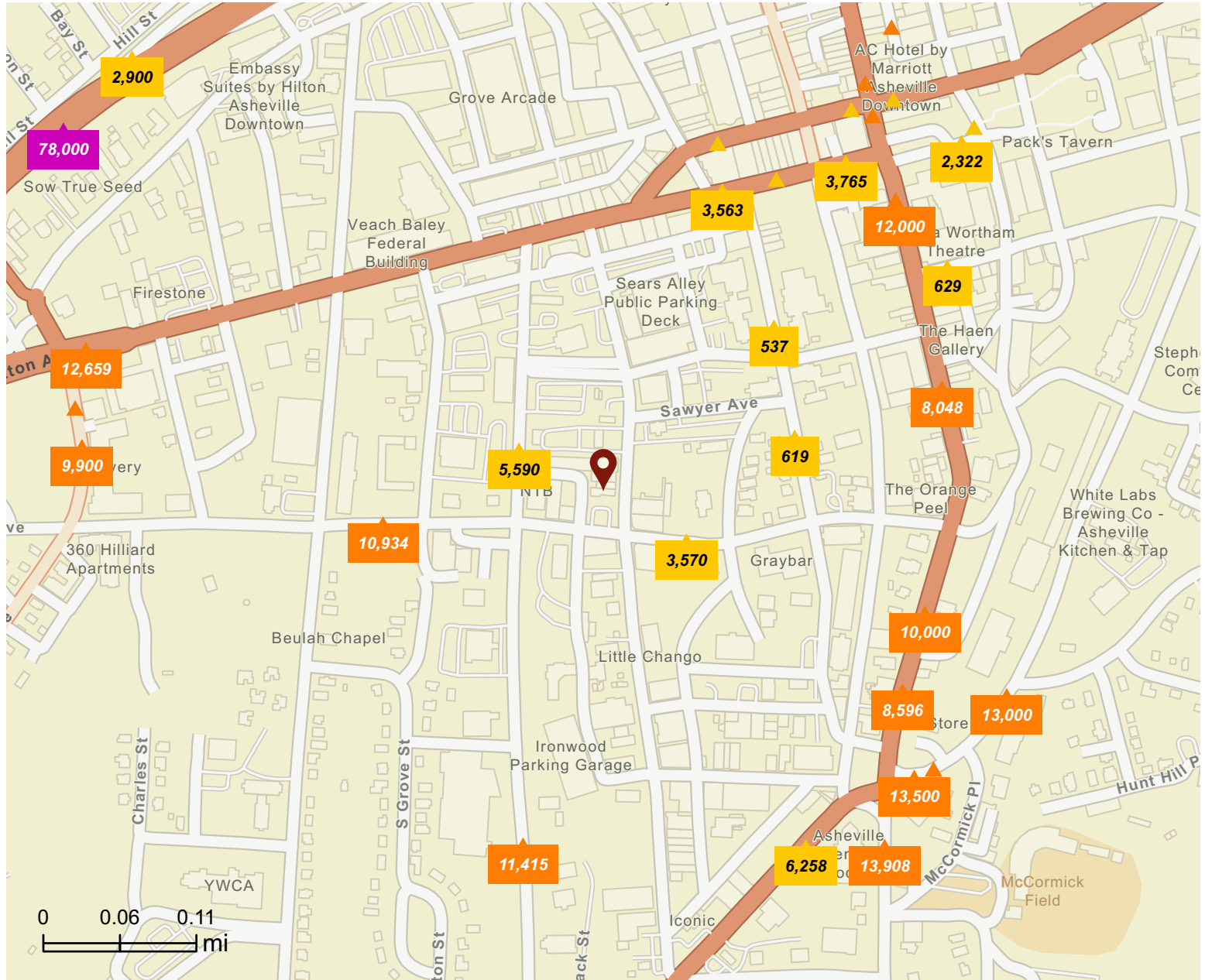


Source: Traffic Counts (2025)

Traffic Count Map - Close Up

81 Coxe Ave, Asheville, North Carolina, 28801

Rings: 1, 3, 5 mile radii



Average Daily Traffic Volume

- ▲ Up to 8,000 vehicles per day
- ▲ 8,001 - 15,000
- ▲ 15,001 - 50,000
- ▲ 50,001 - 70,000
- ▲ 70,001 - 100,000
- ▲ More than 100,000 per day



81 Coxe Ave, Asheville, North Carolina, 28801
Ring: 1 mile radius

Emerging Hub (D1)

Dominant Tapestry Segment

KEY FACTS



9,505

Total Population



\$553,859

Median Home Value



2,385

Businesses



29,301

Daytime Population



40.8

Median Age



2.1%

2025-2030
Pop Growth
Rate



\$43,152

Per Capita
Income



1.8

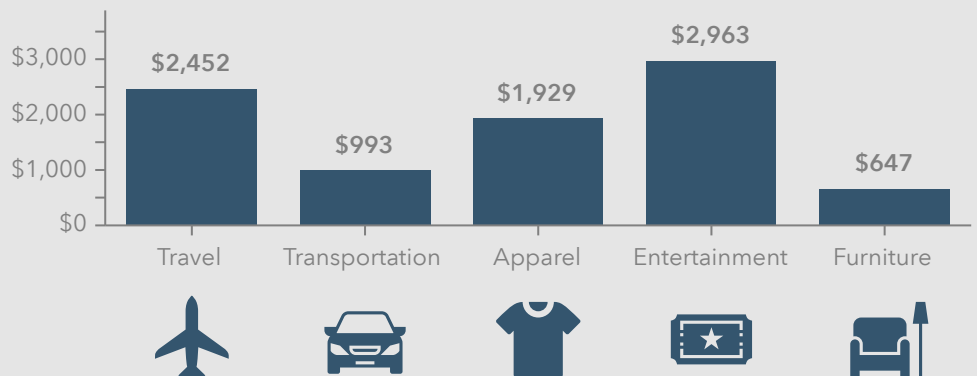
Avg Household
Size



\$52,720

Median Household
Income

KEY SPENDING FACTS



Source: This infographic contains data provided by Esri (2025, 2030), Esri-Data Axle (2025), Esri-U.S. BLS (2025).

© 2026 Esri

Spending facts are average annual dollars per household

Business Summary Report (NAICS)

81 Coxe Ave, Asheville, North Carolina, 28801



Rings: 1, 3, 5 mile radii

Data for all businesses in area	1 mile	3 miles	5 miles
Total Businesses	2,385	5,430	7,381
Total Employees	24,322	63,097	84,570
Total Population	9,505	57,295	106,988
Employee/Population Ratio (per 100)	255.9	110.1	79.0

by NAICS Codes	Businesses		Employees		Businesses		Employees		Businesses		Employees	
	Number	%	Number	%	Number	%	Number	%	Number	%	Number	%
Agriculture, Forestry, Fishing & Hunting (11)	10	0.4%	42	0.2%	22	0.4%	72	0.1%	31	0.4%	91	0.1%
Mining (21)	0	0.0%	0	0.0%	1	0.0%	20	0.0%	4	0.1%	36	0.0%
Utilities (22)	2	0.1%	53	0.2%	3	0.1%	94	0.1%	5	0.1%	217	0.3%
Construction (23)	63	2.6%	329	1.4%	203	3.7%	1,603	2.5%	351	4.8%	3,583	4.2%
Building Construction	31	1.3%	166	0.7%	91	1.7%	697	1.1%	147	2.0%	1,496	1.8%
Heavy/Civil Eng Construction	5	0.2%	21	0.1%	15	0.3%	126	0.2%	30	0.4%	319	0.4%
Specialty Trade Contractor	27	1.1%	141	0.6%	98	1.8%	780	1.2%	174	2.4%	1,768	2.1%
Manufacturing (31-33)	52	2.2%	497	2.0%	152	2.8%	1,880	3.0%	219	3.0%	3,248	3.8%
Wholesale Trade (42)	24	1.0%	232	0.9%	101	1.9%	853	1.4%	147	2.0%	1,538	1.8%
Durable Goods	15	0.6%	191	0.8%	68	1.3%	613	1.0%	100	1.4%	863	1.0%
Nondurable Goods	8	0.3%	40	0.2%	30	0.6%	232	0.4%	43	0.6%	662	0.8%
Trade Broker	1	0.0%	2	0.0%	3	0.1%	7	0.0%	5	0.1%	12	0.0%



Source: This infographic contains data provided by Esri-Data Axle (2025), Esri (2025). Data note: Not all NAICS subcategories for a 2 digit major category are being shown.

Business Summary Report (NAICS)

81 Coxe Ave, Asheville, North Carolina, 28801



Rings: 1, 3, 5 mile radii

by NAICS Codes	1 mile				3 miles				5 miles			
	Businesses		Employees		Businesses		Employees		Businesses		Employees	
	Number	%	Number	%	Number	%	Number	%	Number	%	Number	%
Retail Trade (44-45)	200	8.4%	1,564	6.4%	633	11.7%	7,055	11.2%	912	12.4%	10,100	11.9%
Motor Vehicle & Parts Dealers	5	0.2%	29	0.1%	35	0.6%	332	0.5%	70	0.9%	702	0.8%
Furniture & Home Furnishing Stores	9	0.4%	81	0.3%	36	0.7%	313	0.5%	57	0.8%	481	0.6%
Electronics & Appliance Stores	5	0.2%	35	0.1%	17	0.3%	123	0.2%	24	0.3%	142	0.2%
Building & Garden Equipment	5	0.2%	165	0.7%	32	0.6%	626	1.0%	52	0.7%	1,016	1.2%
Food & Beverage Stores	35	1.5%	508	2.1%	96	1.8%	1,450	2.3%	139	1.9%	2,240	2.6%
Health & Personal Care Stores	10	0.4%	41	0.2%	64	1.2%	538	0.8%	89	1.2%	823	1.0%
Gasoline Stations	2	0.1%	7	0.0%	18	0.3%	77	0.1%	32	0.4%	137	0.2%
Clothing, Shoe and Jewellery Stores	49	2.0%	298	1.2%	119	2.2%	1,125	1.8%	144	1.9%	1,272	1.5%
Sporting Goods, Hobby & Music Stores	72	3.0%	379	1.6%	167	3.1%	990	1.6%	226	3.1%	1,285	1.5%
General Merchandise Stores	8	0.3%	20	0.1%	49	0.9%	1,481	2.4%	80	1.1%	2,001	2.4%
Transportation & Warehousing (48-49)	18	0.8%	252	1.0%	56	1.0%	675	1.1%	93	1.3%	943	1.1%
Truck Transportation	4	0.2%	60	0.3%	16	0.3%	143	0.2%	27	0.4%	264	0.3%
Information (51)	57	2.4%	855	3.5%	116	2.1%	1,275	2.0%	154	2.1%	1,747	2.1%
Finance & Insurance (52)	131	5.5%	940	3.9%	240	4.4%	1,500	2.4%	325	4.4%	1,997	2.4%
Central Bank/Credit & Related Activities	42	1.8%	451	1.9%	81	1.5%	736	1.2%	111	1.5%	1,000	1.2%
Securities & Commodity Contracts	66	2.8%	351	1.4%	101	1.9%	469	0.7%	123	1.7%	548	0.7%
Funds, Trusts & Other Financial	23	1.0%	139	0.6%	58	1.1%	295	0.5%	91	1.2%	449	0.5%
Real Estate, Rental & Leasing (53)	165	6.9%	1,481	6.1%	336	6.2%	2,925	4.6%	462	6.3%	3,534	4.2%
Professional, Scientific & Tech Services (54)	361	15.1%	2,209	9.1%	634	11.7%	3,771	6.0%	788	10.7%	4,672	5.5%
Legal Services	153	6.4%	853	3.5%	202	3.7%	1,050	1.7%	221	3.0%	1,106	1.3%



Source: This infographic contains data provided by Esri-Data Axle (2025), Esri (2025). Data note: Not all NAICS subcategories for a 2 digit major category are being shown.

Business Summary Report (NAICS)

81 Coxe Ave, Asheville, North Carolina, 28801



Rings: 1, 3, 5 mile radii

by NAICS Codes	1 mile				3 miles				5 miles			
	Businesses		Employees		Businesses		Employees		Businesses		Employees	
	Number	%	Number	%	Number	%	Number	%	Number	%	Number	%
Management of Companies (55)	13	0.6%	84	0.3%	21	0.4%	114	0.2%	28	0.4%	136	0.2%
Administrative, Support & Waste Mgmt (56)	63	2.6%	653	2.7%	163	3.0%	1,268	2.0%	242	3.3%	1,801	2.1%
Educational Services (61)	47	2.0%	869	3.6%	122	2.3%	2,416	3.8%	179	2.4%	3,631	4.3%
Health Care & Social Assistance (62)	333	14.0%	4,073	16.8%	736	13.6%	17,178	27.2%	938	12.7%	21,780	25.8%
Ambulatory Health Care	216	9.1%	2,443	10.0%	495	9.1%	7,209	11.4%	643	8.7%	9,922	11.7%
Hospital	22	0.9%	774	3.2%	46	0.8%	7,395	11.7%	58	0.8%	8,082	9.6%
Nursing/Residential Care	4	0.2%	39	0.2%	25	0.5%	521	0.8%	36	0.5%	963	1.1%
Social Assistance	90	3.8%	817	3.4%	171	3.1%	2,053	3.3%	201	2.7%	2,813	3.3%
Arts, Entertainment & Recreation (71)	56	2.4%	521	2.1%	156	2.9%	2,155	3.4%	201	2.7%	3,292	3.9%
Accommodation & Food Services (72)	238	10.0%	3,597	14.8%	539	9.9%	9,500	15.1%	686	9.3%	11,791	13.9%
Accommodation	35	1.5%	876	3.6%	98	1.8%	2,704	4.3%	127	1.7%	3,061	3.6%
Food & Drinking Places	203	8.5%	2,720	11.2%	440	8.1%	6,796	10.8%	559	7.6%	8,730	10.3%
Other Services Except Public Admin (81)	288	12.1%	1,527	6.3%	703	12.9%	3,449	5.5%	979	13.3%	4,663	5.5%
Repair & Maintenance	21	0.9%	82	0.3%	84	1.6%	394	0.6%	150	2.0%	672	0.8%
Auto Repair & Maintenance	13	0.6%	64	0.3%	59	1.1%	294	0.5%	106	1.4%	491	0.6%
Personal & Laundry Service	96	4.0%	444	1.8%	255	4.7%	1,098	1.7%	346	4.7%	1,481	1.8%
Civic and Other Orgs	171	7.2%	1,001	4.1%	364	6.7%	1,957	3.1%	483	6.5%	2,510	3.0%
Public Administration (92)	116	4.9%	4,520	18.6%	155	2.9%	5,256	8.3%	184	2.5%	5,719	6.8%
Unclassified Establishments (99)	149	6.3%	23	0.1%	338	6.2%	37	0.1%	453	6.1%	51	0.1%
Total (11-99)	2,385	100.0%	24,322	100.0%	5,430	100.0%	63,097	100.0%	7,381	100.0%	84,570	100.0%



Source: This infographic contains data provided by Esri-Data Axle (2025), Esri (2025). Data note: Not all NAICS subcategories for a 2 digit major category are being shown.

Business Summary Report (SIC)

81 Coxe Ave, Asheville, North Carolina, 28801



Rings: 1, 3, 5 mile radii

Data for all businesses in area	1 mile	3 miles	5 miles
Total Businesses	2,385	5,430	7,381
Total Employees	24,322	63,097	84,570
Total Population	9,505	57,295	106,988
Employee/Population Ratio (per 100)	255.9	110.1	79.0

by SIC Codes	Businesses		Employees		Businesses		Employees		Businesses		Employees	
	Number	%	Number	%	Number	%	Number	%	Number	%	Number	%
Agriculture & Mining (01-14)	21	0.9%	117	0.5%	78	1.4%	407	0.7%	151	2.0%	813	1.0%
Construction (15-17)	57	2.4%	296	1.2%	190	3.5%	1,456	2.3%	327	4.4%	3,364	4.0%
Manufacturing (20-39)	57	2.4%	861	3.5%	148	2.7%	2,160	3.4%	215	2.9%	3,562	4.2%
Transportation (40-47)	22	0.9%	269	1.1%	81	1.5%	750	1.2%	136	1.8%	1,190	1.4%
Communication (48)	14	0.6%	137	0.6%	39	0.7%	318	0.5%	56	0.8%	668	0.8%
Utility (49)	3	0.1%	56	0.2%	9	0.2%	202	0.3%	16	0.2%	512	0.6%
Wholesale Trade (50-51)	25	1.1%	236	1.0%	103	1.9%	860	1.4%	149	2.0%	1,545	1.8%
Retail Trade Summary (52-59)	410	17.2%	4,320	17.8%	1,095	20.2%	14,007	22.2%	1,505	20.4%	19,026	22.5%
Home Improvement	5	0.2%	165	0.7%	32	0.6%	626	1.0%	53	0.7%	1,019	1.2%
General Merchandise Stores	4	0.2%	12	0.1%	29	0.5%	1,429	2.3%	43	0.6%	1,765	2.1%
Food Stores	38	1.6%	561	2.3%	110	2.0%	1,624	2.6%	154	2.1%	2,432	2.9%
Auto Dealers & Gas Stations	7	0.3%	37	0.1%	52	1.0%	401	0.6%	99	1.3%	821	1.0%
Apparel & Accessory Stores	41	1.7%	275	1.1%	96	1.8%	961	1.5%	115	1.6%	1,090	1.3%
Furniture & Home Furnishings	17	0.7%	120	0.5%	62	1.1%	498	0.8%	97	1.3%	715	0.8%
Eating & Drinking Places	197	8.3%	2,665	11.0%	425	7.8%	6,606	10.5%	539	7.3%	8,499	10.1%
Miscellaneous Retail	101	4.2%	486	2.0%	290	5.3%	1,863	3.0%	406	5.5%	2,686	3.2%



Source: This infographic contains data provided by Esri-Data Axle (2025), Esri (2025).

Business Summary Report (SIC)

81 Coxe Ave, Asheville, North Carolina, 28801



Rings: 1, 3, 5 mile radii

by SIC Codes	1 mile				3 miles				5 miles			
	Businesses		Employees		Businesses		Employees		Businesses		Employees	
	Number	%	Number	%	Number	%	Number	%	Number	%	Number	%
Finance, Insurance, Real Estate (60-67)	314	13.2%	2,682	11.0%	572	10.5%	4,513	7.2%	769	10.4%	5,609	6.6%
Banks, Savings & Lending	44	1.8%	458	1.9%	86	1.6%	717	1.1%	117	1.6%	1,002	1.2%
Securities Brokers	64	2.7%	341	1.4%	98	1.8%	458	0.7%	119	1.6%	532	0.6%
Insurance Carriers & Agents	23	1.0%	139	0.6%	58	1.1%	295	0.5%	90	1.2%	445	0.5%
Real Estate, Investment Offices	183	7.7%	1,744	7.2%	330	6.1%	3,043	4.8%	443	6.0%	3,629	4.3%
Services Summary (70-89)	1,199	50.3%	10,879	44.7%	2,623	48.3%	33,199	52.6%	3,419	46.3%	42,577	50.4%
Hotels & Lodging	35	1.5%	876	3.6%	98	1.8%	2,704	4.3%	127	1.7%	3,061	3.6%
Automotive Services	16	0.7%	86	0.3%	78	1.4%	367	0.6%	136	1.8%	594	0.7%
Movies & Amusements	59	2.5%	366	1.5%	164	3.0%	939	1.5%	218	3.0%	1,236	1.5%
Health Services	233	9.8%	3,210	13.2%	542	10.0%	15,006	23.8%	707	9.6%	18,419	21.8%
Legal Services	147	6.2%	830	3.4%	195	3.6%	1,024	1.6%	214	2.9%	1,080	1.3%
Education Inst. & Libraries	40	1.7%	924	3.8%	96	1.8%	2,443	3.9%	141	1.9%	3,618	4.3%
Other Services	669	28.1%	4,588	18.9%	1,449	26.7%	10,717	17.0%	1,876	25.4%	14,569	17.2%
Government (91-97)	113	4.7%	4,441	18.3%	152	2.8%	5,174	8.2%	182	2.5%	5,640	6.7%
Unclassified Establishments (99)	151	6.3%	29	0.1%	341	6.3%	51	0.1%	456	6.2%	65	0.1%
Totals (01-99)	2,385	100.0%	24,322	100.0%	5,430	100.0%	63,097	100.0%	7,381	100.0%	84,570	100.0%



Source: This infographic contains data provided by Esri-Data Axle (2025), Esri (2025).

Key Facts

81 Coxe Ave, Asheville, North Carolina, 28801
Ring: 1 mile radius

KEY FACTS

9,505

Population



1.8

Average Household Size



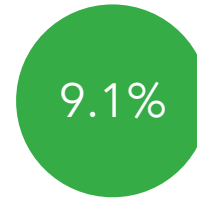
40.8

Median Age

\$52,720

Median Household Income

EDUCATION



9.1%

No High School Diploma



18.7%

High School Graduate



16.5%

Some College/
Associate's Degree



55.7%

Bachelor's/Grad/
Prof Degree

BUSINESS



2,385

Total Businesses



24,322

Total Employees

EMPLOYMENT



67.5%

White Collar



10.9%

Blue Collar



21.6%

Services



9.7%

Unemployment Rate

INCOME



\$52,720

Median Household Income



\$43,152

Per Capita Income



\$14,628

Median Net Worth

2025 Households by income (Esri)

The largest group: <\$15,000 (26.2%)

The smallest group: \$25,000 - \$34,999 (5.6%)

Indicator ▲	Value	Diff	
<\$15,000	26.2%	+17.8%	
\$15,000 - \$24,999	9.5%	+2.5%	
\$25,000 - \$34,999	5.6%	-1.0%	
\$35,000 - \$49,999	7.5%	-3.0%	
\$50,000 - \$74,999	13.2%	-3.7%	
\$75,000 - \$99,999	7.8%	-5.4%	
\$100,000 - \$149,999	13.1%	-2.7%	
\$150,000 - \$199,999	7.3%	-3.1%	
\$200,000+	9.9%	-1.3%	

Bars show deviation from Buncombe County

Demographic and Income Profile

81 Coxe Ave, Asheville, North Carolina, 28801



Ring: 1 mile radius

Summary	Census 2020	2025	2030
Total Population	8,901	9,505	10,559
Total Households	4,611	4,952	5,545
Family Households	1,646	1,697	1,887
Average Household Size	1.76	1.76	1.77
Owner Occupied Housing Units	1,400	1,507	1,589
Renter Occupied Housing Units	3,211	3,445	3,956
Median Age	39.7	40.8	41.9

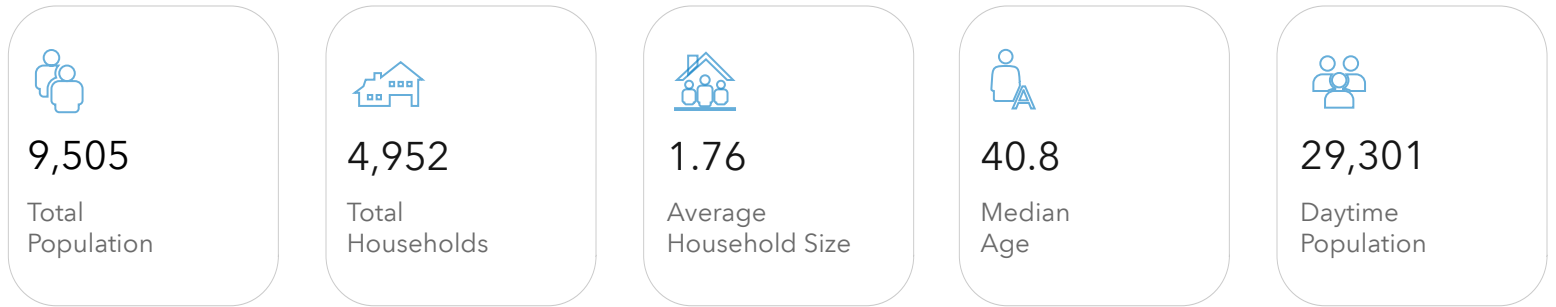
Trends 2025 - 2030	Area	State	National
Population	2.1%	0.8%	0.4%
Households	2.3%	1.1%	0.6%
Family Population	2.1%	0.9%	0.5%
Owner Occupied Housing Units	1.1%	1.2%	0.0%
Median Household Income	3.3%	2.6%	2.5%

Population by Age	Census 2020		2025		2030	
	Number	Percent	Number	Percent	Number	Percent
0-4	363	4.1%	370	3.9%	400	3.8%
5-9	357	4.0%	340	3.6%	344	3.3%
10-14	305	3.4%	329	3.5%	322	3.0%
15-19	275	3.1%	345	3.6%	375	3.5%
20-24	529	5.9%	589	6.2%	720	6.8%
25-29	969	10.9%	863	9.1%	991	9.4%
30-34	945	10.6%	944	9.9%	880	8.3%
35-39	754	8.5%	862	9.1%	907	8.6%
40-44	639	7.2%	725	7.6%	880	8.3%
45-49	584	6.6%	646	6.8%	763	7.2%
50-54	560	6.3%	610	6.4%	693	6.6%
55-59	574	6.5%	583	6.1%	658	6.2%
60-64	581	6.5%	558	5.9%	598	5.7%
65-69	558	6.3%	584	6.1%	599	5.7%
70-74	452	5.1%	551	5.8%	606	5.7%
75-79	253	2.8%	347	3.6%	444	4.2%
80-84	114	1.3%	167	1.8%	239	2.3%
Age 85+	89	1.0%	95	1.0%	139	1.3%

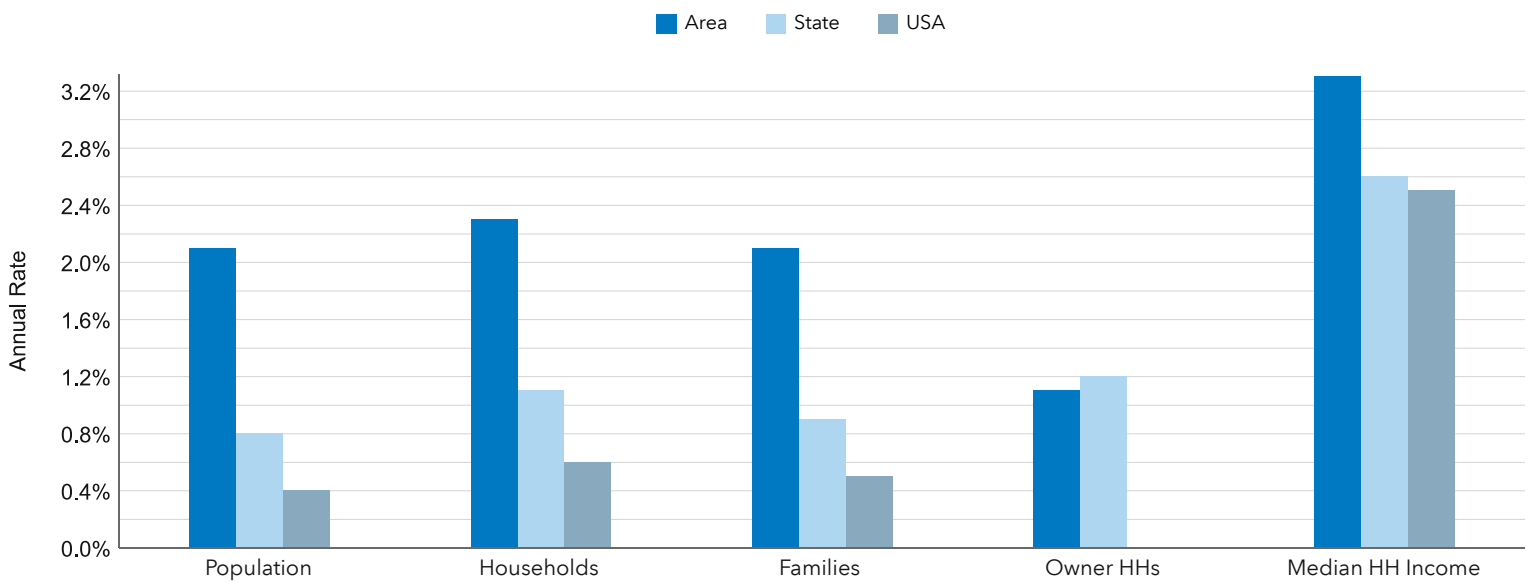
Households by Income	2025		2030	
	Number	Percent	Number	Percent
<\$10,000	885	17.9%	923	16.6%
\$10,000-14,999	413	8.3%	435	7.8%
\$15,000-19,999	236	4.8%	221	4.0%
\$20,000-24,999	235	4.8%	235	4.2%
\$25,000-29,999	111	2.2%	102	1.8%
\$30,000-34,999	164	3.3%	163	2.9%
\$35,000-39,999	166	3.4%	162	2.9%
\$40,000-44,999	108	2.2%	114	2.1%
\$45,000-49,999	95	1.9%	95	1.7%
\$50,000-59,999	212	4.3%	237	4.3%
\$60,000-74,999	441	8.9%	518	9.3%
\$75000-99999	386	7.8%	445	8.0%
\$100,000-124,999	361	7.3%	431	7.8%
\$125,000-149,999	289	5.8%	367	6.6%
\$150000-199999	362	7.3%	441	8.0%
\$200,000-249,999	183	3.7%	246	4.4%
\$250,000-299,999	106	2.1%	148	2.7%
\$300,000-399,999	92	1.9%	137	2.5%
\$400,000-499,999	34	0.7%	30	0.5%
\$500,000+	74	1.5%	94	1.7%
Median Household Income	\$52,720	-	\$62,056	-
Average Household Income	\$84,261	-	\$92,592	-
Per Capita Income	\$43,152	-	\$47,775	-

Race and Ethnicity	Census 2020		2025		2030	
	Number	Percent	Number	Percent	Number	Percent
White Alone	6,028	67.7%	6,423	67.6%	7,021	66.5%
Black Alone	1,976	22.2%	2,060	21.7%	2,327	22.0%
American Indian	38	0.4%	39	0.4%	45	0.4%
Asian Alone	99	1.1%	114	1.2%	139	1.3%
Pacific Islander	50	0.6%	62	0.7%	73	0.7%
Some Other Race	191	2.1%	219	2.3%	262	2.5%
Two or More Races	519	5.8%	588	6.2%	694	6.6%
Hispanic (Any Race)	391	4.4%	467	4.9%	569	5.4%

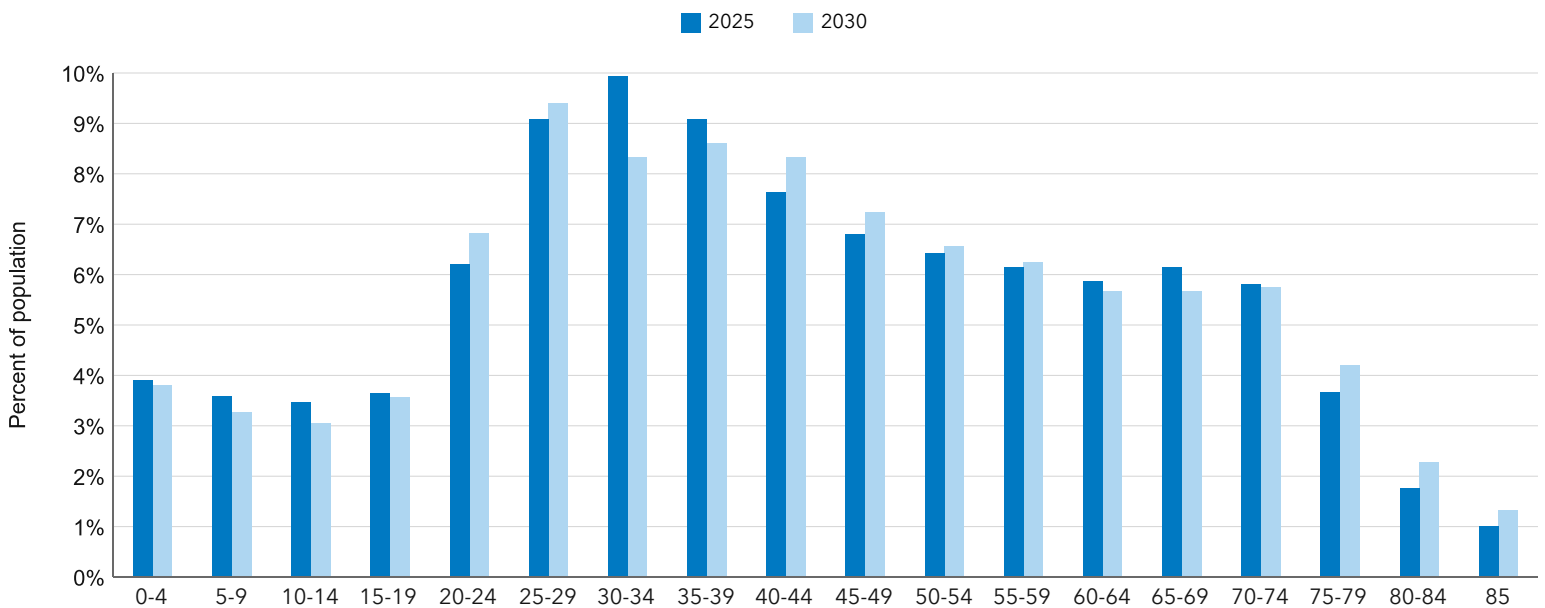
Key Indicators for 2025



Trends: 2025 - 2030 Annual Rate



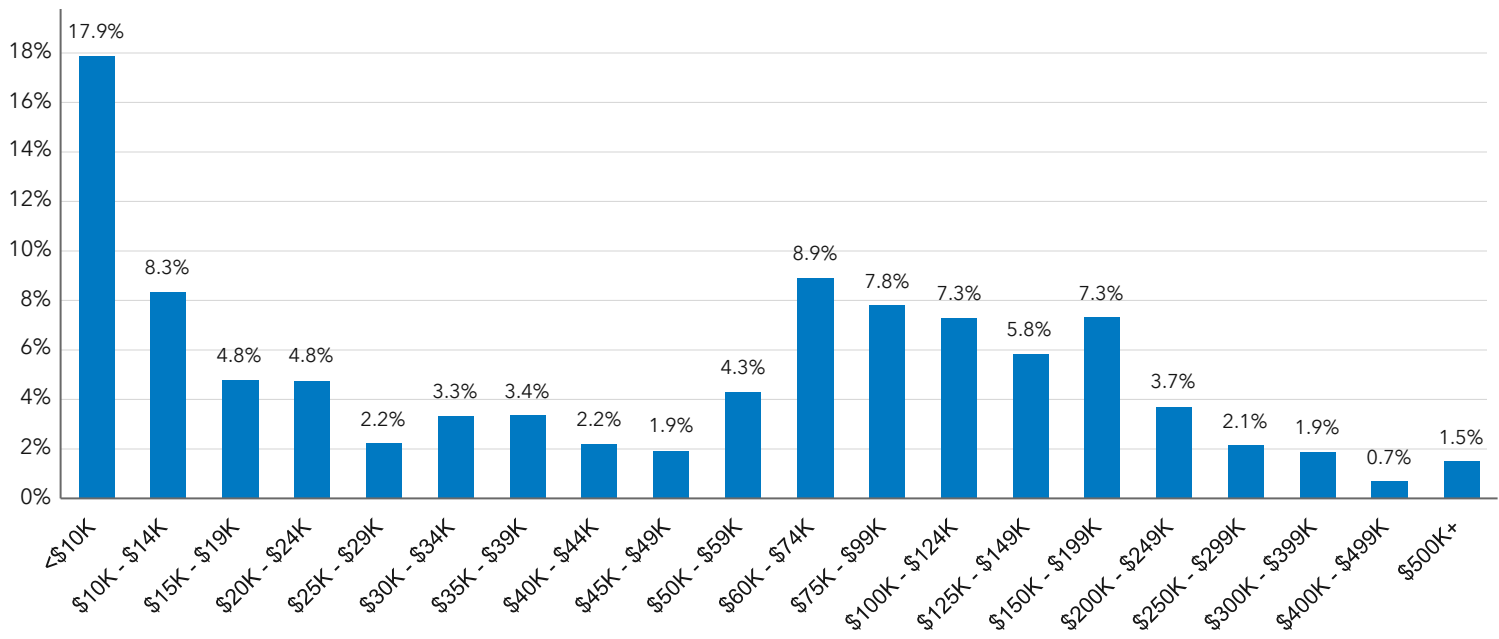
Population by Age



Key Indicators for 2025



Households by Income for 2025



Population by Race

