

GEOLOG

FOR LEASE

📍 10402 VALLEY FORGE DR, HOUSTON, TX 77042

PROPERTY FEATURES

- Easy Access to Beltway 8 & I-10
- Near City Center & Memorial City
- Built in 2018
- Parking Available
- Energy Corridor / Westchase Business District

LISTED BY



MUSTAFA TUNC

📞 346.212.9394

✉️ mtunc@kw.com



AUSTIN N. OZTAN

📞 713.962.0355

✉️ Austin@oztanrealty.com

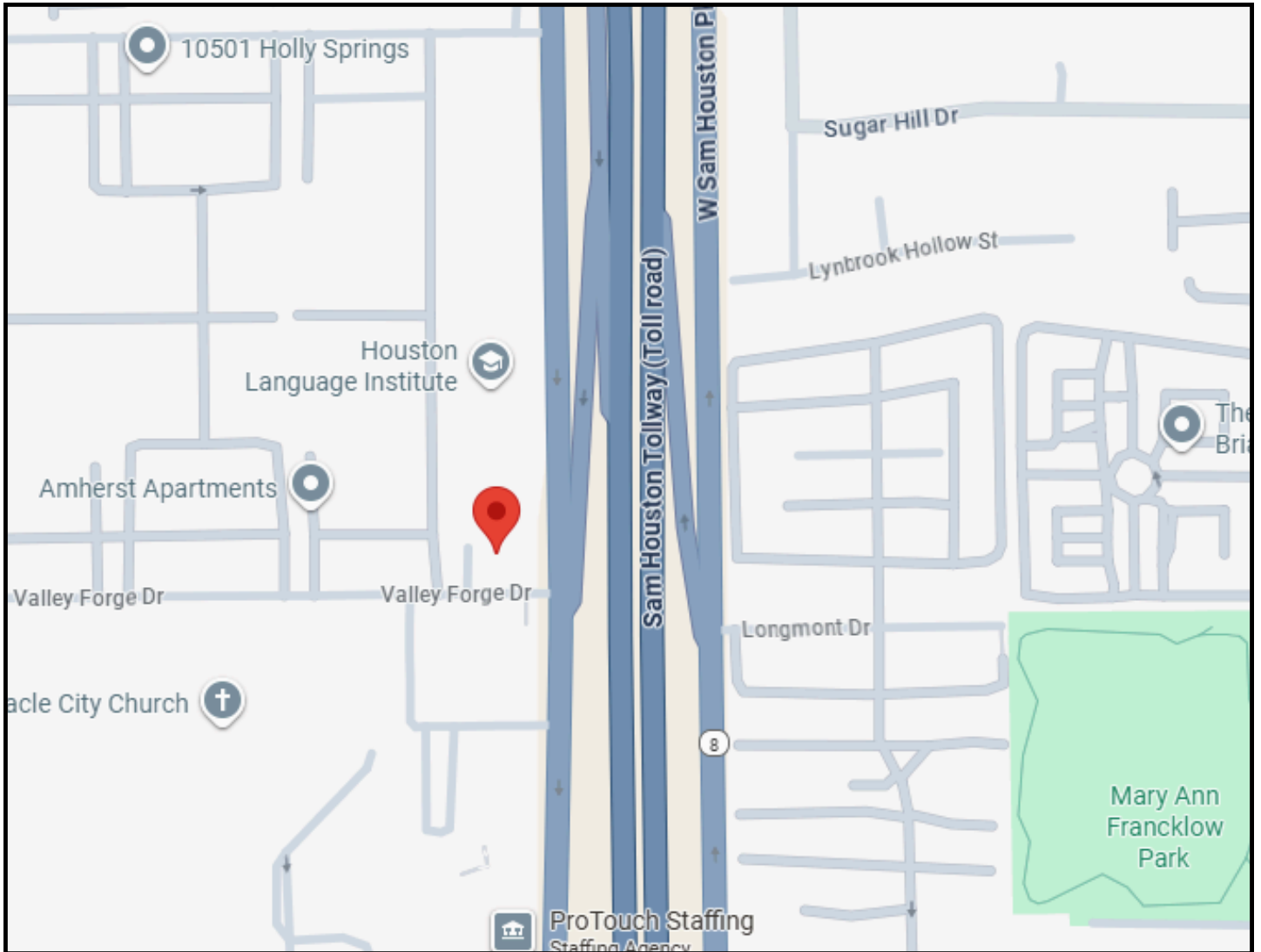
PROPERTY OVERVIEW



Property Fact	Detail
Building Type	Office
Building Size	21,000 SF
Year Built	2018
Floors	3
Parking	44 Surface Spaces
Class	B
Total Available SF	4,732 SF
Approx. Size Ranges	2,366-4,732 SF
Traffic Count	149,741
LEED Certification	USGBC LEED Certified

Controlled Access | Security System | Signage Opportunity

WHY 10402 VALLEY FORGE?



HIGHLIGHTS

Highly visible with Beltway freeway frontage

Signage rights available

Located near City Centre & Memorial City

Close to Energy Corridor

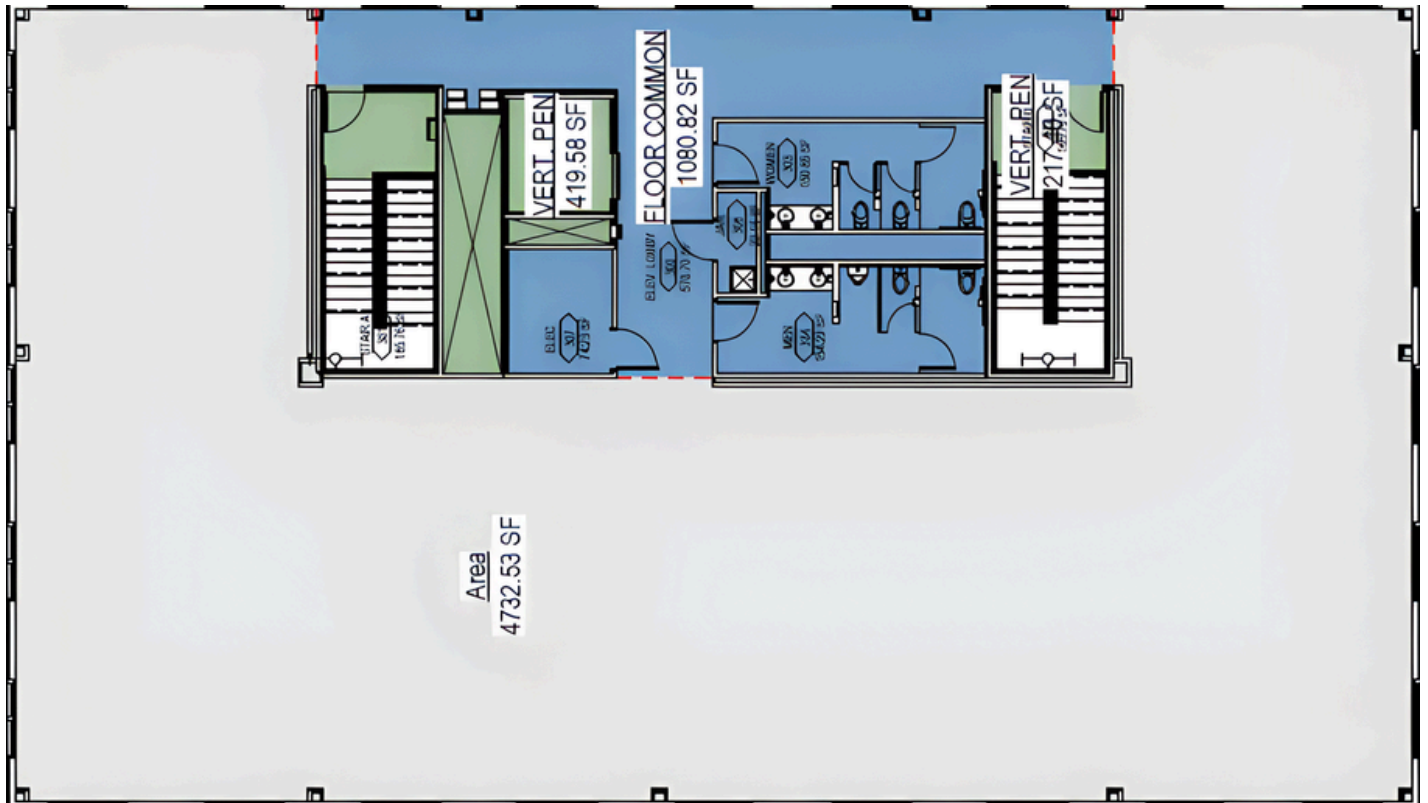
Controlled access & security system

Minutes from Interstate 10 & Highway 59 South




IN THE HEART OF WESTCHASE BUSINESS DISTRICT

3rd Floor Site Plan - 4,732 SF Available



MUSTAFA TUNC

 346.212.9394

 mtunc@kw.com



AUSTIN N. OZTAN

 713.962.0355

 Austin@oztanrealty.com

Schedule your private tour today — discover your new office space in the heart of Westchase.

YOUR SPACE SHOULD WORK AS HARD AS YOUR BUSINESS DOES.