

± 1,373 SF WAREHOUSE SUITE AVAILABLE FOR SUBLEASE
9434 CHESAPEAKE DRIVE, SAN DIEGO, CA 92123



CONNOR USSELMAN

Senior Associate • LIC. #02127620

858.458.3317 • cusselman@voitco.com

Voit
REAL ESTATE SERVICES



PROPERTY FEATURES

- » High image business park
- » Grade level loading
- » Warehouse clear height of approximately 15'2" - 19'0"
- » Buildings are fire sprinklered
- » Parking ratio of approximately 2.46/1,000 SF
- » Time Warner Cable service available
- » 1 block west of 1-15 via Clairemont Mesa Boulevard
- » 1 block south of Hwy-52 via Ruffin Road
- » Gas potentially available
- » SUBLEASE RATE: \$2.05/SF NNN



AVAILABLE SIZE:
± 1,373 SF



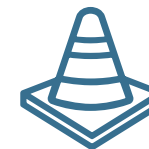
PARKING:
2.46/1,000 SF



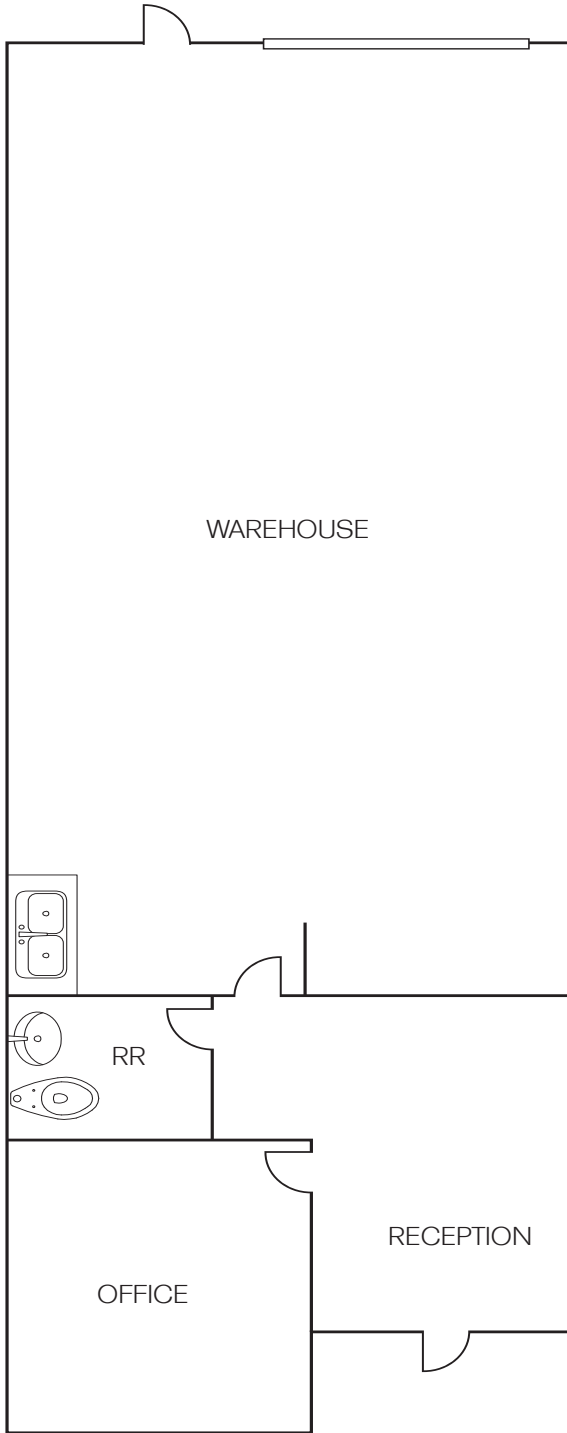
SPRINKLERS:
Wet



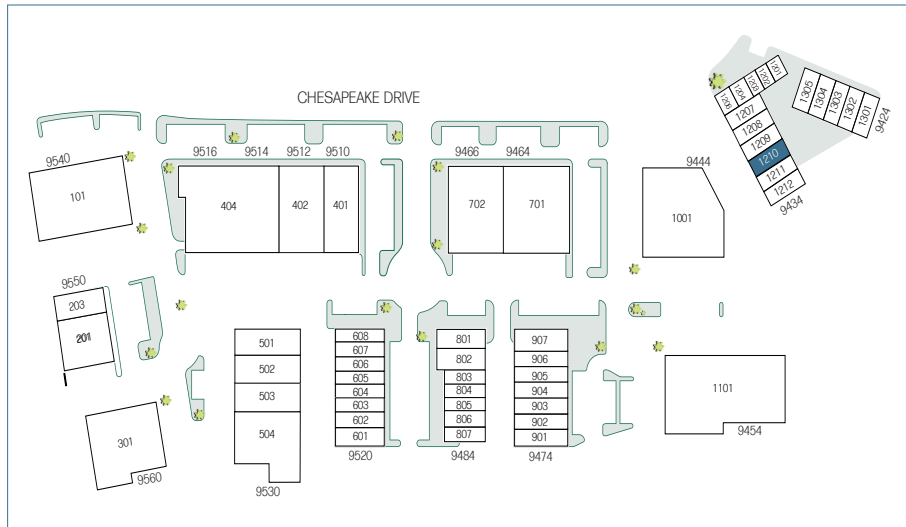
YEAR BUILT:
1979

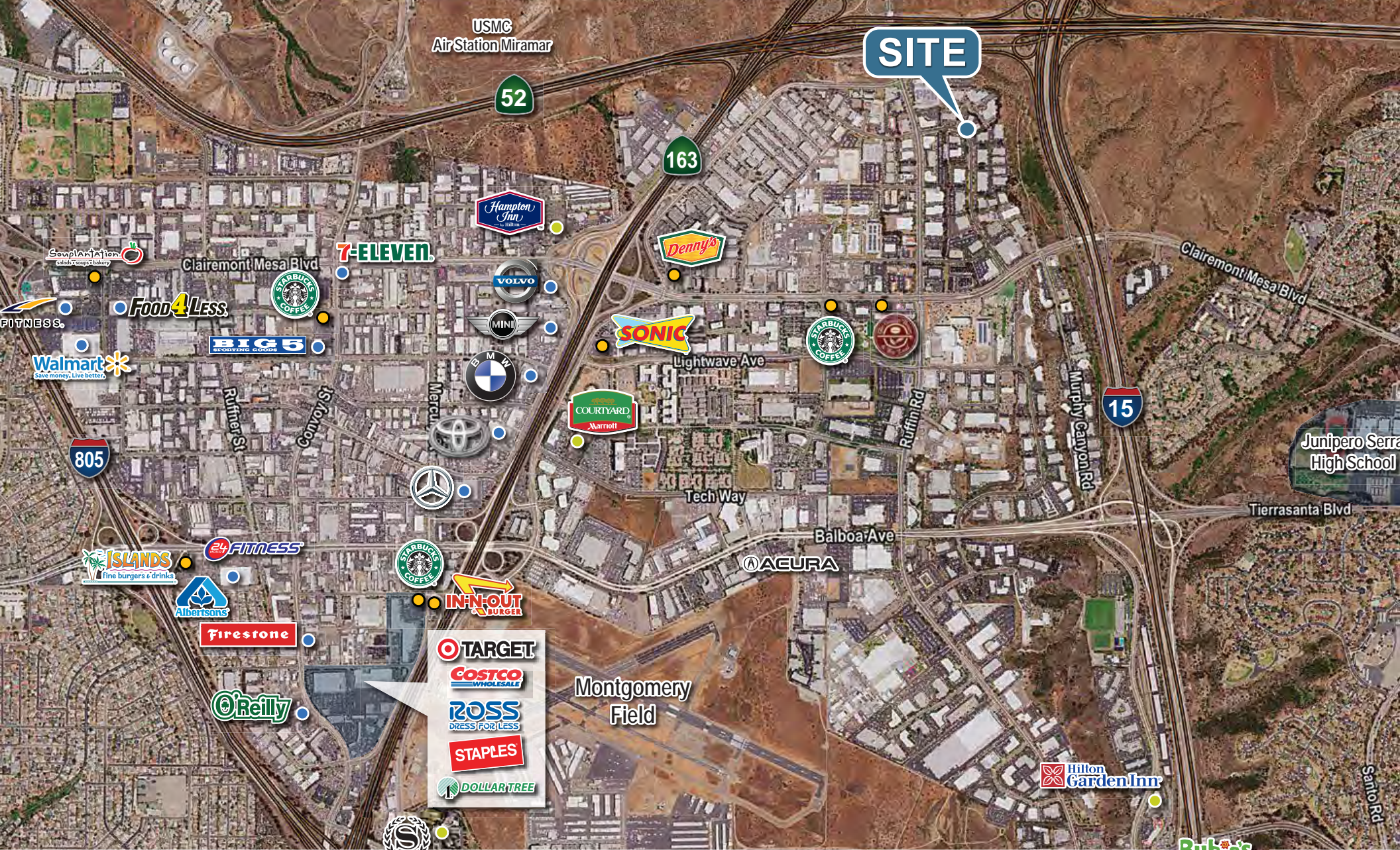


ZONING:
IL-2-1



<p>±1,373 SF SUBLEASE SIZE</p>	<p>\$2.05/SF NNN SUBLEASE RATE</p>	<p>JUNE 30, 2027 SUBLEASE EXPIRATION</p>	<p>SUITE 1210 SUITE NUMBER</p>
---	---	---	---





CONNOR USSELMAN

LIC. #02127620 | Senior Associate
 858.458.3317 | cusselman@voitco.com

4180 La Jolla Village Drive, Suite 100, La Jolla, CA 92037 | 858.453.0505 | 858.408.3976 F | Lic #01991785 | www.voidco.com

Licensed as Real Estate Salesperson by the DRE. The information contained herein has been obtained from sources we deem reliable. While we have no reason to doubt its accuracy, we do not guarantee it. ©2026 Voit Real Estate Services, Inc. All Rights Reserved.

