

**SUBJECT  
PROPERTY**

FOR LEASE OR SALE

# NORTH MERIDIAN CAR DEALERSHIP

*2.21 AC Car Lot with Office, On-Site Maintenance Shop,  
and Showroom*

For more information,  
please contact

MATT MCLENNAN, SIOR, CCIM  
253.722.1458  
matt.mclennan@kidder.com

CHRIS TRUSSEL  
253.722.1467  
chris.trussel@kidder.com



## Property Highlights

PROPERTY ADDRESS	615 N Meridian, Puyallup, WA
LAND AREA	2.21 AC (96,442 SF)
LOT SIZE	±1.5 AC (64,340 SF)
BUILDING	12,890 SF
SHOP	5,520 SF
OFFICE	4,232 SF
RETAIL/SHOWROOM	1,922 SF
2ND FLOOR OFFICE	1,216 SF
VEHICLE SHED	1,566 SF
LOT OFFICE	372 SF
SECURITY	Fully Fenced & Lit
ZONING	General Commercial → ZONING MAP → ZONING USE TABLE

→ [VIEW PHOTOS](#)

**\$32K**

LEASE RATE PER MONTH + NNN

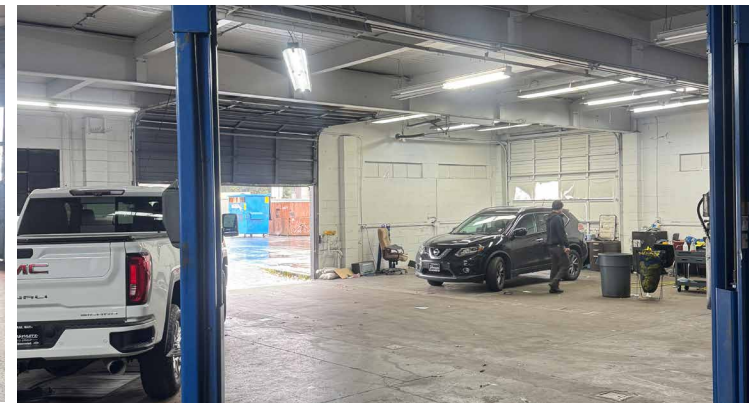
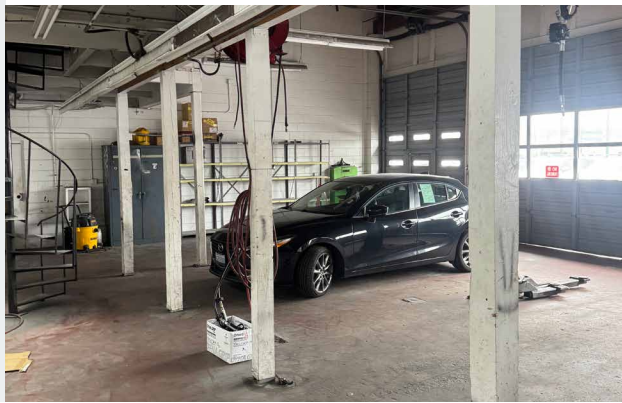
**\$5.2M**

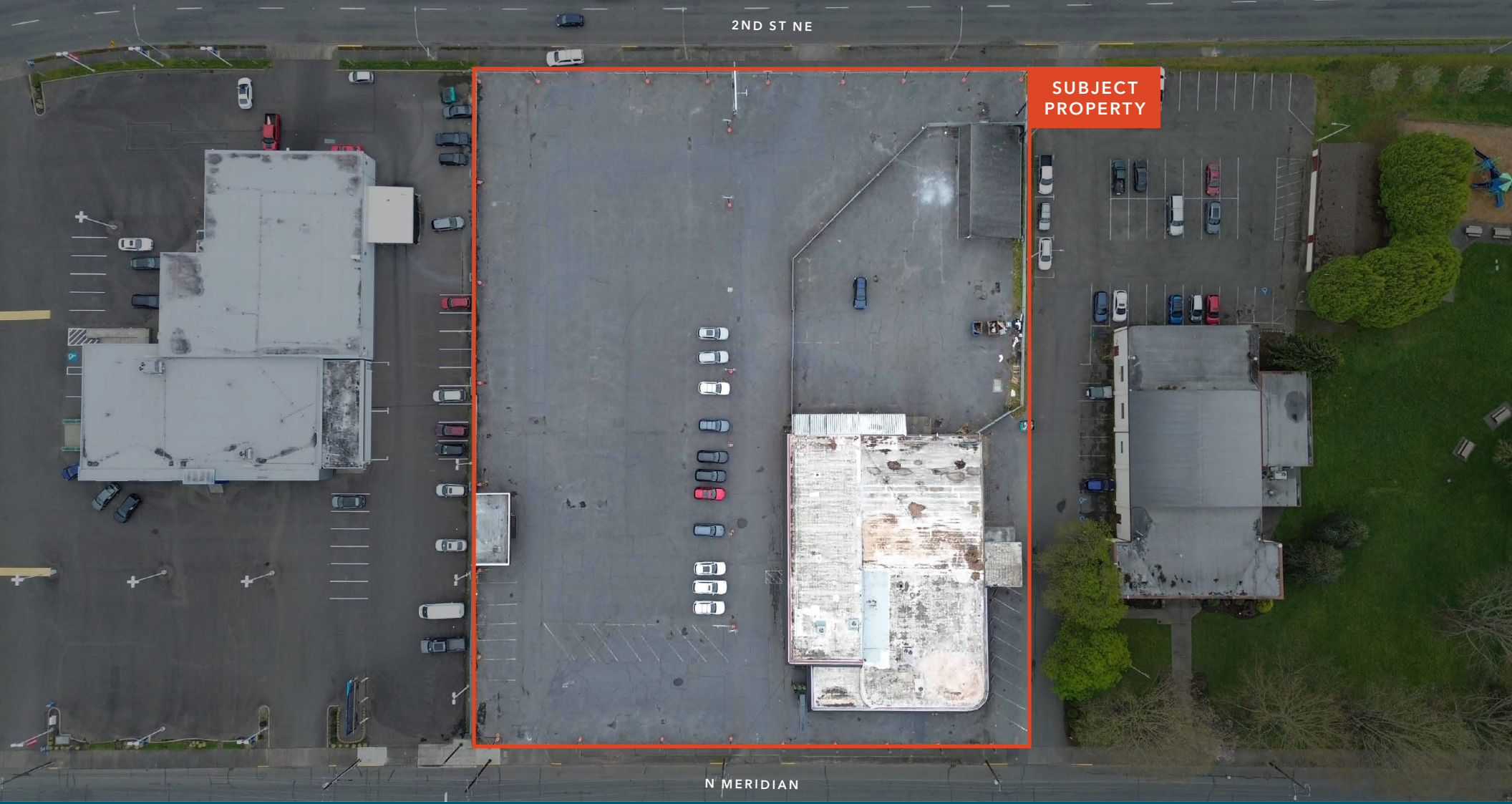
SALE PRICE



615 N Meridian in Puyallup sits at the top of Auto Row on high visibility Meridian. The property presents a rare opportunity to lease 2.21 acres of commercially zoned land with significant improved infrastructure along one of Puyallup's highest-traffic corridors.

The property features 12,890 square feet of building improvements including garage, office, and showroom space, plus an additional 1,900+ square feet of covered and accessory structures – all surrounding an expansive ±1.5-acre excess yard well-suited for outdoor storage, fleet parking, or equipment staging. Zoning is CG General Commercial and tenant should verify uses with the City of Puyallup.





2ND ST NE

SUBJECT  
PROPERTY

N MERIDIAN

# NORTH MERIDIAN YARD & OFFICE

*For more information on  
this property, please contact*

**MATT MCLENNAN**, SIOR, CCIM  
253.722.1458  
matt.mclennan@kidder.com

**CHRIS TRUSSEL**  
253.722.1467  
chris.trussel@kidder.com

[KIDDER.COM](https://www.kidder.com)

This information supplied herein is from sources we deem reliable. It is provided without any representation, warranty, or guarantee, expressed or implied as to its accuracy. Prospective Buyer or Tenant should conduct an independent investigation and verification of all matters deemed to be material, including, but not limited to, statements of income and expenses. Consult your attorney, accountant, or other professional advisor. All Kidder Mathews designs are the sole property of Kidder Mathews. Branded materials and layouts are not authorized for use by any other firm or person.

