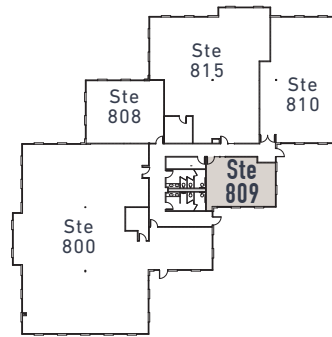
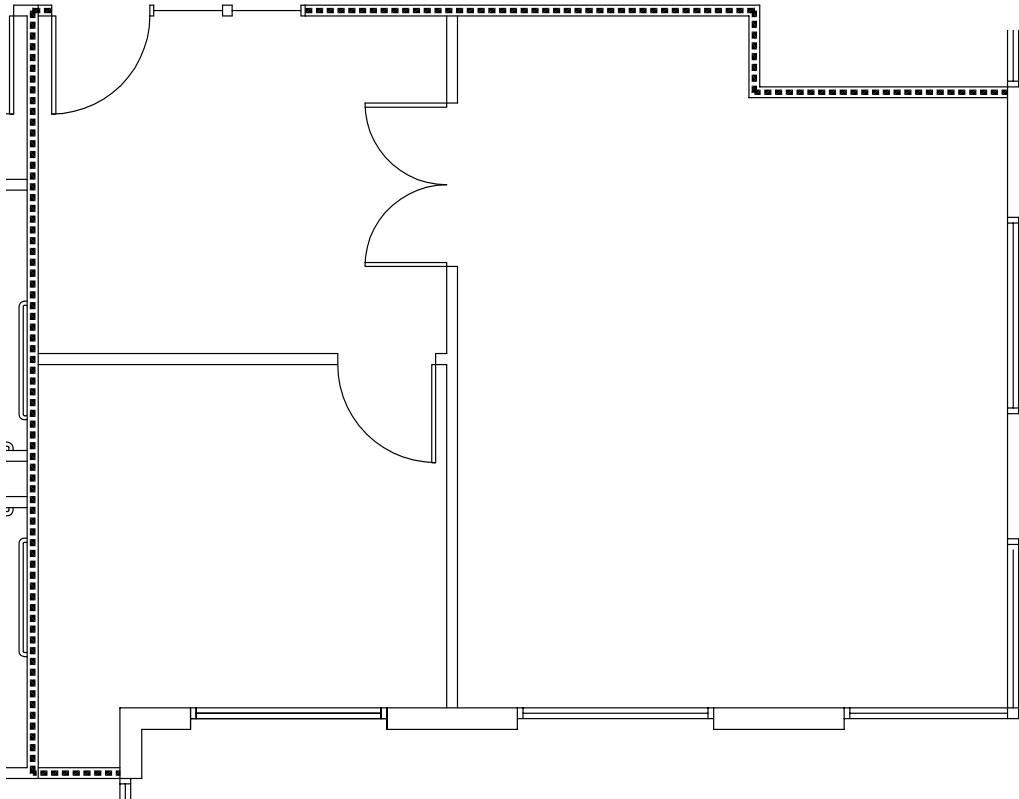




QUAIL RIDGE OFFICE CENTRE

710-815 Quail Ridge Drive
Westmont, IL

Building D - 2nd Floor
Suite 809 / 719 RSF



CONTACT

JIM ADLER
630 691 0605
jadler@hiffman.com

DAN O'NEILL
630 691 0610
doneill@hiffman.com

COURTNEY SWEISS
630 317 0748
csweiss@hiffman.com

GROUP RMC

NAIHiffman
Commercial Real Estate Services, Worldwide