

# 360

## SUPERTEST ROAD

TORONTO, ON



**6,739 SF  
FOR LEASE**

 **CUSHMAN &  
WAKEFIELD**

# // BUILDING SPECIFICATIONS

<b>ADDRESS</b>	360 Supertest Road, Toronto
<b>SIZE</b>	6,739 SF
<b>CLEAR HEIGHT</b>	13'6"
<b>SHIPPING</b>	2 TL doors
<b>ZONING</b>	EH 1.0
<b>NET RENT</b>	\$15.95 PSF
<b>TMI</b>	\$5.25 PSF (2025)

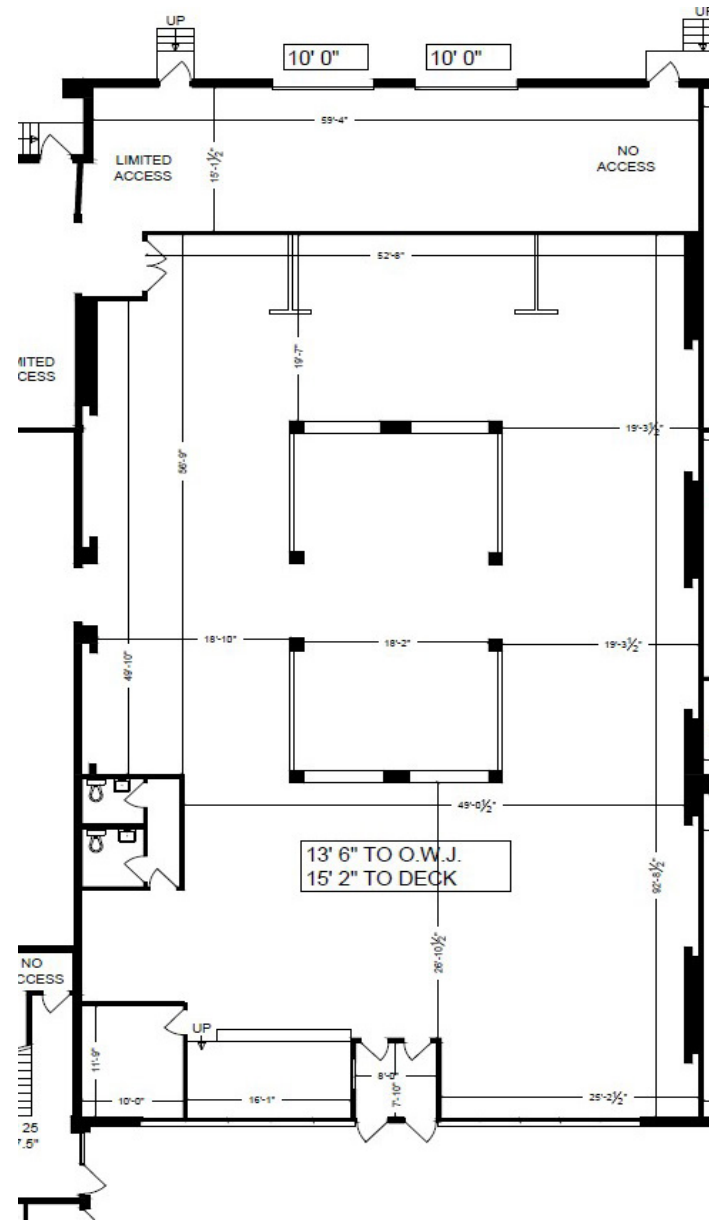
## Comments:

Retail Showroom/Warehouse space with ample parking and truck level shipping in an excellent location just off Dufferin Street. Conveniently located with easy access to Highways 401, Allen Road and TTC. Professionally managed property.



// **360 SUPERTEST ROAD**  
TORONTO, ON

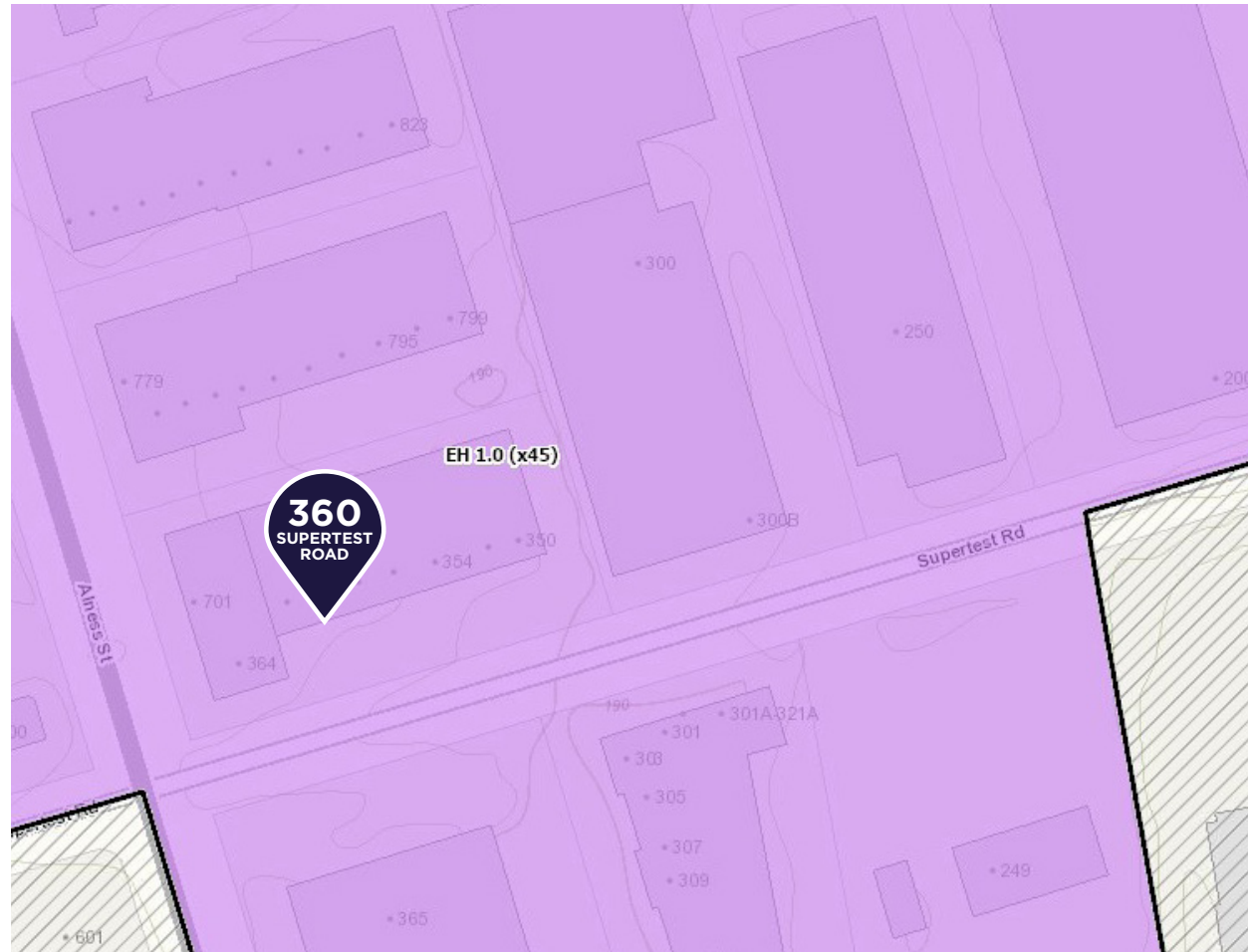
# // UNIT FLOOR PLAN



# // EH 1.0 ZONING

## Permitted Uses:

- Ambulance Depot
- Animal Shelter
- Bindery
- Building Supply Yards
- Carpenter's Shop
- Chemical Materials Storage
- Cold Storage
- Contractors Establishment
- Custom Workshop
- Dry Cleaning or Laundry Plant
- Fire Hall
- Fuel Storage
- Industrial Sales and Service Use
- Laboratory
- Manufacturing Uses:
  - 1) Ammunition, Firearms or Fireworks Factory;
  - 2) Tannery
- Police Station
- Public Utility
- Public Works Yard
- Recovery Facility
- Service Shop
- Shipping Terminal
- Vehicle Depot
- Vehicle Repair Shop
- Warehouse
- Waste Transfer Station



## Permitted Uses - with Conditions:

- Cogeneration Energy (10)
- Crematorium (14)
- Marihuana production facility (3)
- Open Storage (1)
- Outside Operations (2)
- Propane Transfer, Handling and Storage Facility (9)
- Renewable Energy (10)
- Transportation Use (12)
- Vehicle Service Shop (5,13) [ By-law: 0403-2014 ] [ By-law: 1124-2018 ]



## DRIVE TIMES / DISTANCE

DESTINATION	DISTANCE	TIME
Highway 401	6.0 km	11 mins
Highway 400	11.3 km	18 mins
Downsview Park GO Station	4.0 km	10 mins
Highway 407	4.6 km	10 mins
Highway 27	13.6 km	24 mins
Billy Bishop Toronto City Airport	47.2 km	45 mins
Highway 427	21.6 km (VIA 407)	20 mins (VIA 407)
Hwy 407 station	5.8 km	12 mins
Pearson International Airport	20.5 km	25 mins (VIA 409)
CP Intermodal	24.4 km	29 mins



# 360

## SUPERTEST ROAD

TORONTO, ON



### CONTACT

**GORAN BRELIH, B.Sc.Eng., SIOR**  
EXECUTIVE VICE PRESIDENT, BROKER  
Direct: +1 416 756 5456  
Mobile: +1 416 458 4264  
goran.brelih@cushwake.com

**DIANA MCKENNON**  
SALES REPRESENTATIVE  
Direct: +1 416 642 5356  
Mobile: +1 647 400 9801  
diana.mckennon@cushwake.com



©2026 Cushman & Wakefield ULC. All rights reserved. The information contained in this communication is strictly confidential. This information has been obtained from sources believed to be reliable but has not been verified. NO WARRANTY OR REPRESENTATION, EXPRESS OR IMPLIED, IS MADE AS TO THE CONDITION OF THE PROPERTY (OR PROPERTIES) REFERENCED HEREIN OR AS TO THE ACCURACY OR COMPLETENESS OF THE INFORMATION CONTAINED HEREIN, AND SAME IS SUBMITTED SUBJECT TO ERRORS, OMISSIONS, CHANGE OF PRICE, RENTAL OR OTHER CONDITIONS, WITHDRAWAL WITHOUT NOTICE, AND TO ANY SPECIAL LISTING CONDITIONS IMPOSED BY THE PROPERTY OWNER(S). ANY PROJECTIONS, OPINIONS OR ESTIMATES ARE SUBJECT TO UNCERTAINTY AND DO NOT SIGNIFY CURRENT OR FUTURE PROPERTY PERFORMANCE.