

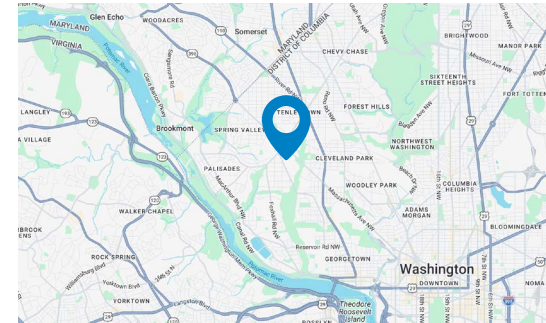


**Sublease Opportunity
at \$29.50psf**

**Site
Features**

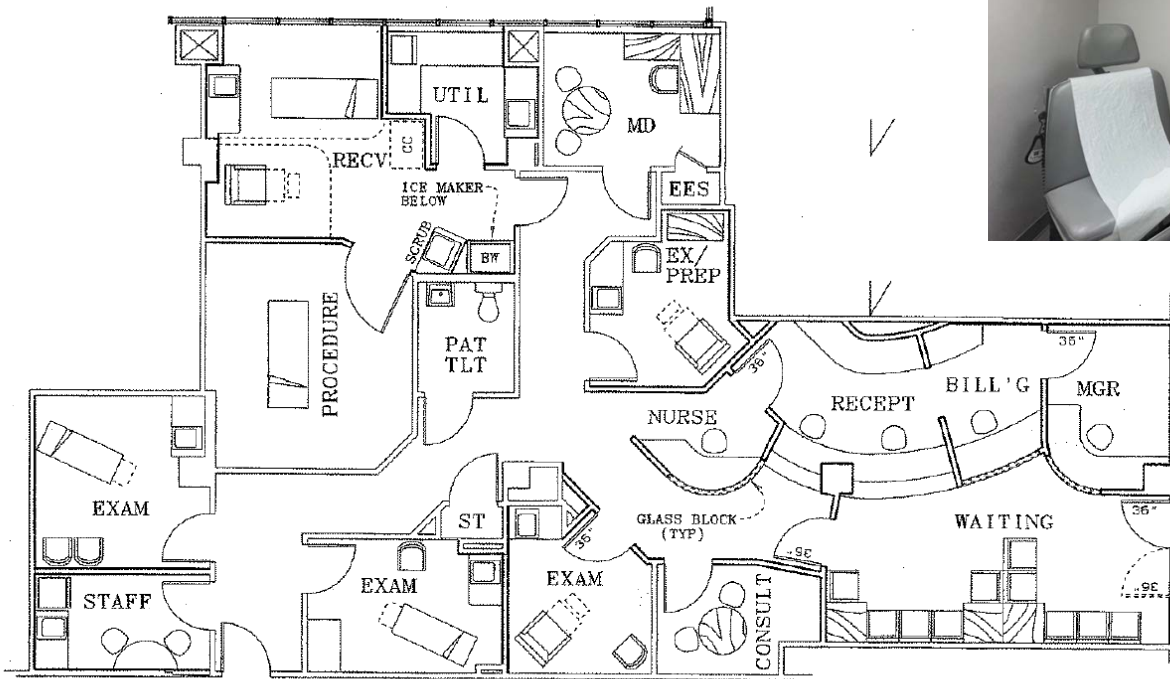
- The Premier Medical Office Building Located in NW DC
- 2,238 Square Foot Built out Plastic Surgery Medical Office
- Mix of brand name health providers, “built in” referral source, within building
- Convenient Access to Massachusetts Avenue and Wisconsin Avenue
- Parking garage for tenants and visitors
- High quality retail within and surrounding the building
- Move in ready Medical Suite
- Previous Tenant: Plastic Surgery
- Multiple plumbed exam rooms throughout
- Ample storage and admin space

Building Highlights





FLOOR PLAN



For more information or to schedule a property tour, please contact:

CHARLES FEITEL: 240.372.4867 | cfeitel@hprgrealty.com

CONNOR EBEL: 240.204.3391 | cebel@hprgrealty.com

HPRGrealty.com



This document/email has been prepared by HPRG for advertising and general information only. HPRG makes no guarantees, representations or warranties of any kind, expressed or implied, regarding the information including, but not limited to, warranties of content, accuracy and reliability. Any interested party should undertake their own inquiries as to the accuracy of the information. HPRG excludes unequivocally all inferred or implied terms, conditions and warranties arising out of this document and excludes all liability for loss and damages arising there from. This communication is not intended to cause or induce breach of an existing listing agreement.

