

SUITE 275

±4,115 RSF

FOR LEASING INFO
PLEASE CONTACT:

SHEILA BALE
MANAGING DIRECTOR
+1 602 224 4454
sheila.bale@cushwake.com

ERIKA ECKBLAD
SENIOR ASSOCIATE
+1 602 224 4451
erika.eckblad@cushwake.com

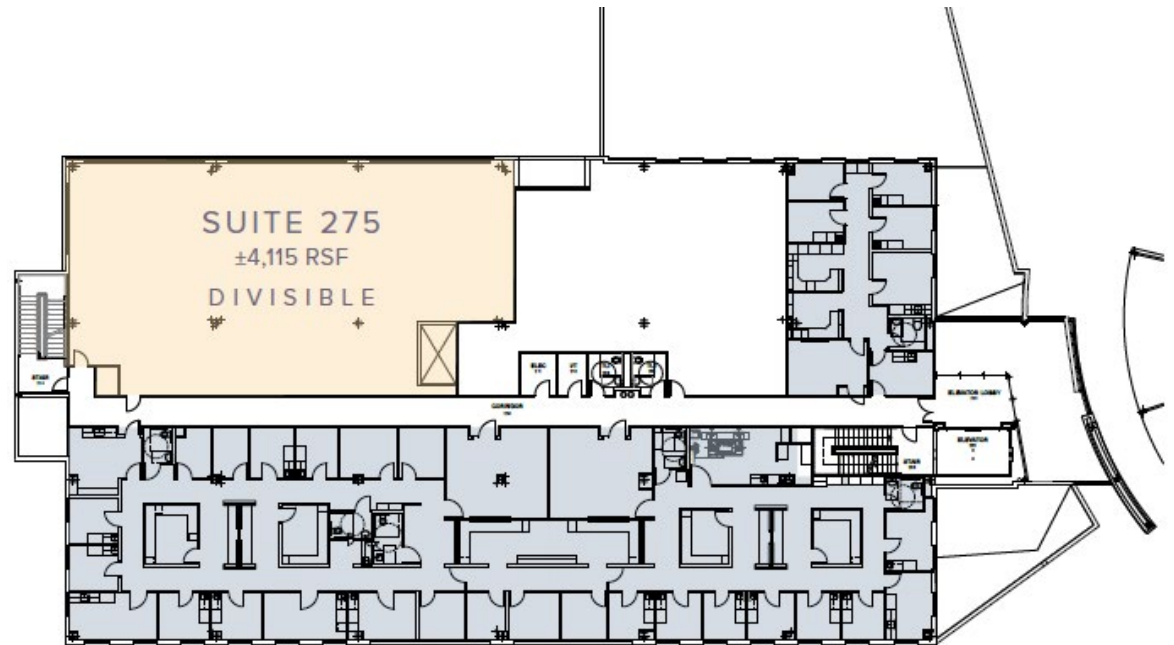
TOM WEINHOLD
MANAGING DIRECTOR
+1 602 224 4428
tom.weinhold@cushwake.com



2555 E Camelback Rd, Suite 400
Phoenix, Arizona 85016
Main +1 602 954 9000
Fax +1 602 253 0528
cushmanwakefield.com



PHYSICIANS MEDICAL PLAZZA OF WESTGATE



7330 N. 99TH AVE. | GLENDALE, AZ 85305

©2024 Cushman & Wakefield. All rights reserved. The information contained in this communication is strictly confidential. This information has been obtained from sources believed to be reliable but has not been verified. NO WARRANTY OR REPRESENTATION, EXPRESS OR IMPLIED, IS MADE AS TO THE CONDITION OF THE PROPERTY (OR PROPERTIES) REFERENCED HEREIN OR AS TO THE ACCURACY OR COMPLETENESS OF THE INFORMATION CONTAINED HEREIN, AND SAME IS SUBMITTED SUBJECT TO ERRORS, OMISSIONS, CHANGE OF PRICE, RENTAL OR OTHER CONDITIONS, WITHDRAWAL WITHOUT NOTICE, AND TO ANY SPECIAL LISTING CONDITIONS IMPOSED BY THE PROPERTY OWNER(S). ANY PROJECTIONS, OPINIONS OR ESTIMATES ARE SUBJECT TO UNCERTAINTY AND DO NOT SIGNIFY CURRENT OR FUTURE PROPERTY PERFORMANCE. COE-PM-West-02.22.2024

SUITE 375

±3,529 RSF

FOR LEASING INFO
PLEASE CONTACT:

SHEILA BALE

MANAGING DIRECTOR
+1 602 224 4454
sheila.bale@cushwake.com

ERIKA ECKBLAD

SENIOR ASSOCIATE
+1 602 224 4451
erika.eckblad@cushwake.com

TOM WEINHOLD

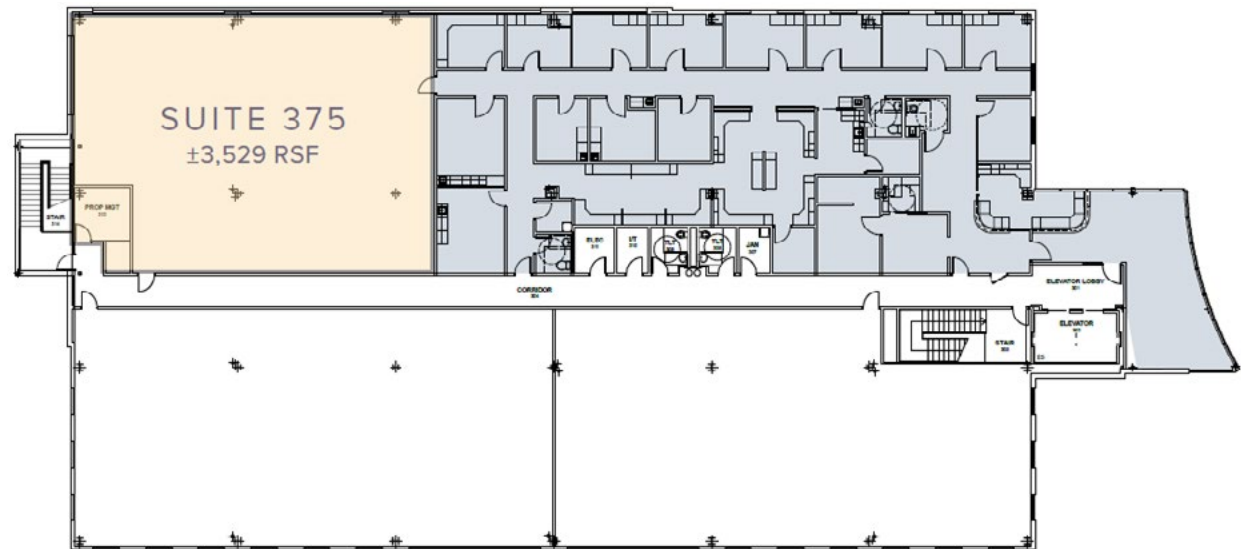
MANAGING DIRECTOR
+1 602 224 4428
tom.weinhold@cushwake.com



2555 E Camelback Rd, Suite 400
Phoenix, Arizona 85016
Main +1 602 954 9000
Fax +1 602 253 0528
cushmanwakefield.com



PHYSICIANS MEDICAL PLAZZA OF WESTGATE



7330 N. 99TH AVE. | GLENDALE, AZ 85305

©2024 Cushman & Wakefield. All rights reserved. The information contained in this communication is strictly confidential. This information has been obtained from sources believed to be reliable but has not been verified. NO WARRANTY OR REPRESENTATION, EXPRESS OR IMPLIED, IS MADE AS TO THE CONDITION OF THE PROPERTY (OR PROPERTIES) REFERENCED HEREIN OR AS TO THE ACCURACY OR COMPLETENESS OF THE INFORMATION CONTAINED HEREIN, AND SAME IS SUBMITTED SUBJECT TO ERRORS, OMISSIONS, CHANGE OF PRICE, RENTAL OR OTHER CONDITIONS, WITHDRAWAL WITHOUT NOTICE, AND TO ANY SPECIAL LISTING CONDITIONS IMPOSED BY THE PROPERTY OWNER(S). ANY PROJECTIONS, OPINIONS OR ESTIMATES ARE SUBJECT TO UNCERTAINTY AND DO NOT SIGNIFY CURRENT OR FUTURE PROPERTY PERFORMANCE. COE-PM-West-02.22.2024