



VALUE INDUSTRIAL PARTNERS, LLC

Industrial Real Estate Investment, Brokerage and Management

477 W. Wrightwood Avenue, Elmhurst, Illinois 60126 TEL: 630-333-1900 FAX: 630-333-1910

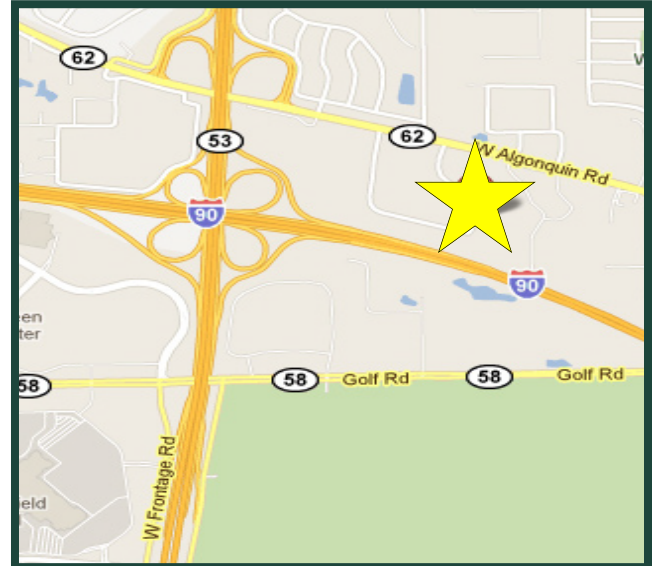


**5410 Newport Drive, Unit 41
Rolling Meadows, Illinois**

**FOR LEASE
2,451 SF**

Building Specifications

Available Size:	2,451 Square Feet
Building Size:	157,167 Square Feet
Office Size:	900 Square Feet
Ceiling Height:	12'
Loading:	3 Common Interior Docks 1 Drive-up Ramp
Heat:	Gas
Sprinklers:	Yes
Power:	100 Amps/3 Phase
Taxes:	Included with Current Stop
Operating Expenses:	Included with Current Stop



For Further Information, Please Contact:

Brian P. Gedvilas, Director of Leasing
bgedvilas@valueindustrialpartners.com

Jennifer L. Dobrowolski
jdobrowolski@valueindustrialpartners.com

TEL: 630-333-1900 FAX: 630-333-1910

Comments

- Professionally owned and managed
- Prime location at Rt. 53 & I-90
- 2 Private offices

Officers of the firm have an ownership interest in this property.
Submitted subject to error, change in status, or withdrawal without notice.

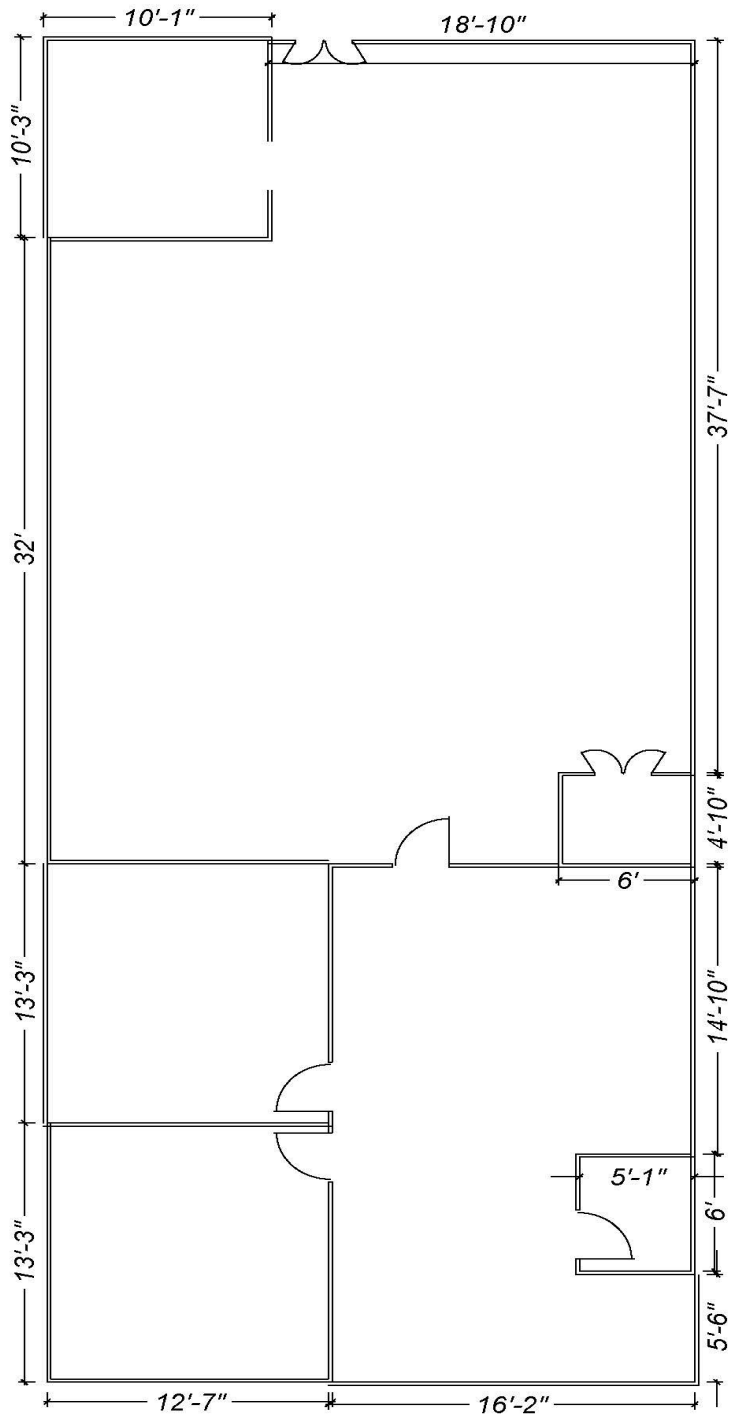


VALUE INDUSTRIAL PARTNERS, LLC

Industrial Real Estate Investment, Brokerage and Management

477 W. Wrightwood Avenue, Elmhurst, Illinois 60126 TEL: 630-333-1900 FAX: 630-333-1910

LAYOUT



FOR ILLUSTRATION PURPOSES ONLY

Officers of the firm have an ownership interest in this property.

Submitted subject to error, change in status, or withdrawal without notice.