



NEWMARK



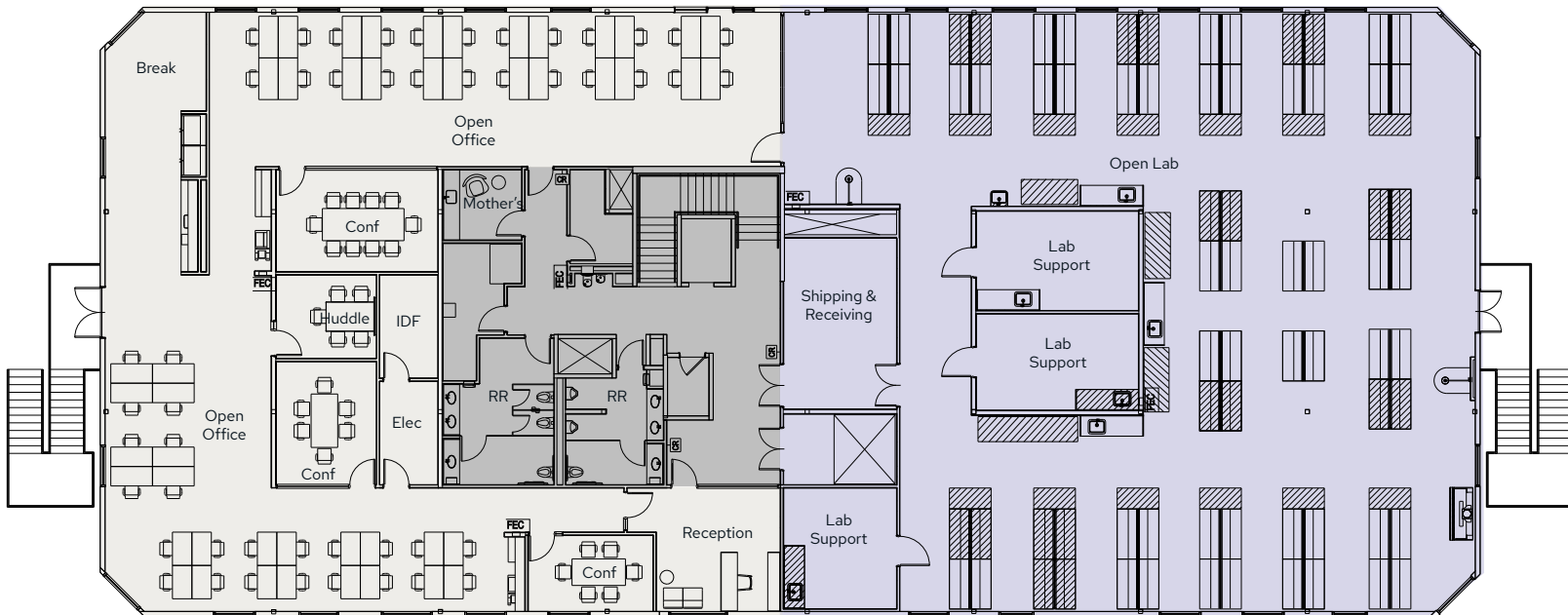
LONGFELLOW™

2445 FABER PLACE

Suite 200
12,764 SF Fitted Lab
Available Now

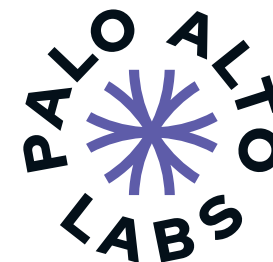


■ Lab ■ Office *Office furniture not included*





Modern Lifestyle Amenities



9,315 SF amenity building with programming and services provided by ELEVATE.

Interior Amenities

- Cafe/lounge space with coffee service
- Training room with prefunction space
- Conference rooms
- Fitness center with showers & lockers
- Ping pong table
- Scrabble board

Exterior Amenities

- Seating areas with trellises
- Circular firepit
- Pond with water features



NEWMARK

RANDY SCOTT

650.465.4222

randy.scott@nmrk.com

CA RE LIC #00852506

ERIC BLUESTEIN

650.688.8547

eric.bluestein@nmrk.com

CA RE LIC #01720416

COLIN KLOEZEMAN

650.688.8532

colin.kloezeman@nmrk.com

CA RE LIC #02210827

JAY LESLIE

650.576.2888

jay.leslie@cushwake.com

CA RE LIC #01244555



LONGFELLOW™

The distributor of this communication is performing acts for which a real estate license is required. The information contained herein has been obtained from sources deemed reliable but has not been verified and no guarantee, warranty or representation, either express or implied, is made with respect to such information. Terms of sale or lease and availability are subject to change or withdrawal without notice. 21-0173-12/25