

1827-1855 NORTHFIELD DR.

UNIT #1841 & #1855

ROCHESTER HILLS, MICHIGAN

INDUSTRIAL FOR LEASE

5,600 & 7,412 Square Feet Units Available



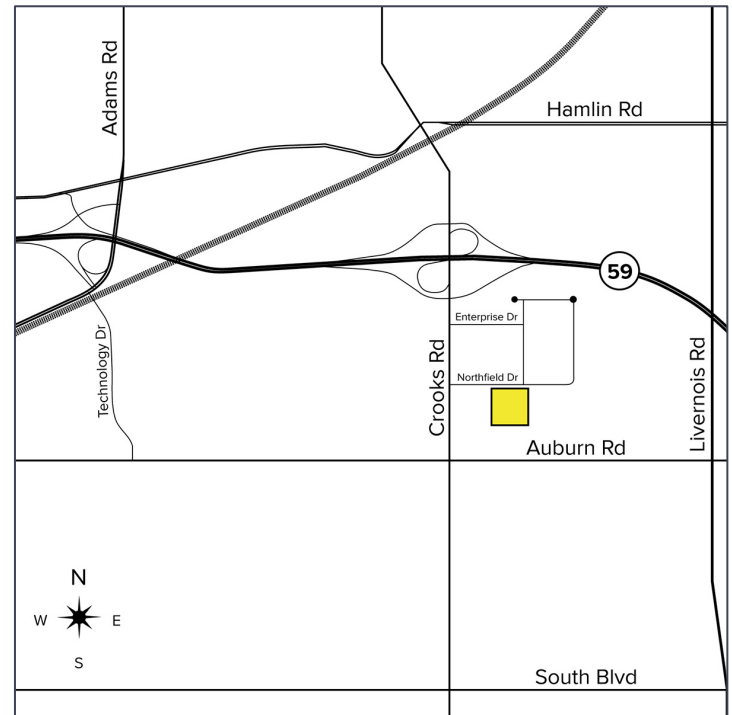
**SIGNATURE
ASSOCIATES**
KNOW SIGNATURE | KNOW RESULTS

TAN INDUSTRIAL PARK



PROPERTY FEATURES

- 5,600 - 7,412 square feet available
- 800 - 1,200 square feet office
- 16' clear height
- (1) 12'x14' grade level door per unit
- 600 amps, 240/480 volts power
- Very nice and clean unit
- Quick access to M-59 and I-75
- Drive-through capability
- Two private offices
- Tenant Responsibility: Taxes, insurance, CAM: \$2.45/sq. ft.
- Lease Rate: \$10.50/sq. ft. NNN



For more information, please contact:

KRIS PAWLOWSKI

(248) 359 3801

kpawlowski@signatureassociates.com

PAUL HOGE

(248) 948 0103

paulhoge@signatureassociates.com

SIGNATURE ASSOCIATES

One Towne Square, Suite 1200

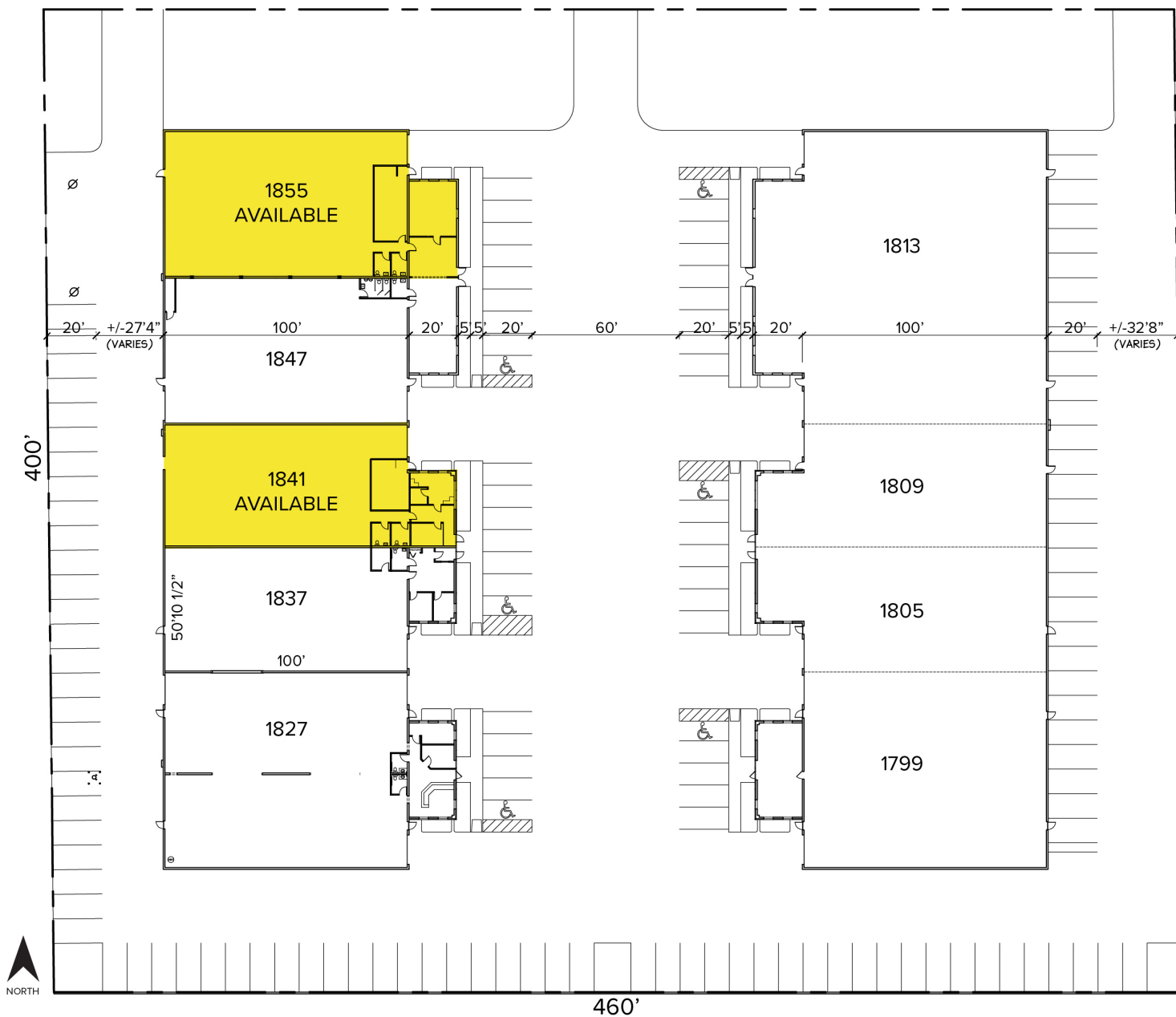
Southfield, MI 48076

www.signatureassociates.com

Site Plan

AVAILABILITY		
UNIT	TOTAL SF	OFFICE SF
1841	5,600	800
1855	7,412	1,200

NORTHFIELD DRIVE



For more information, please contact:

KRIS PAWLOWSKI
(248) 359 3801
kpawlowski@signatureassociates.com

PAUL HOGE
(248) 948 0103
paulhoge@signatureassociates.com

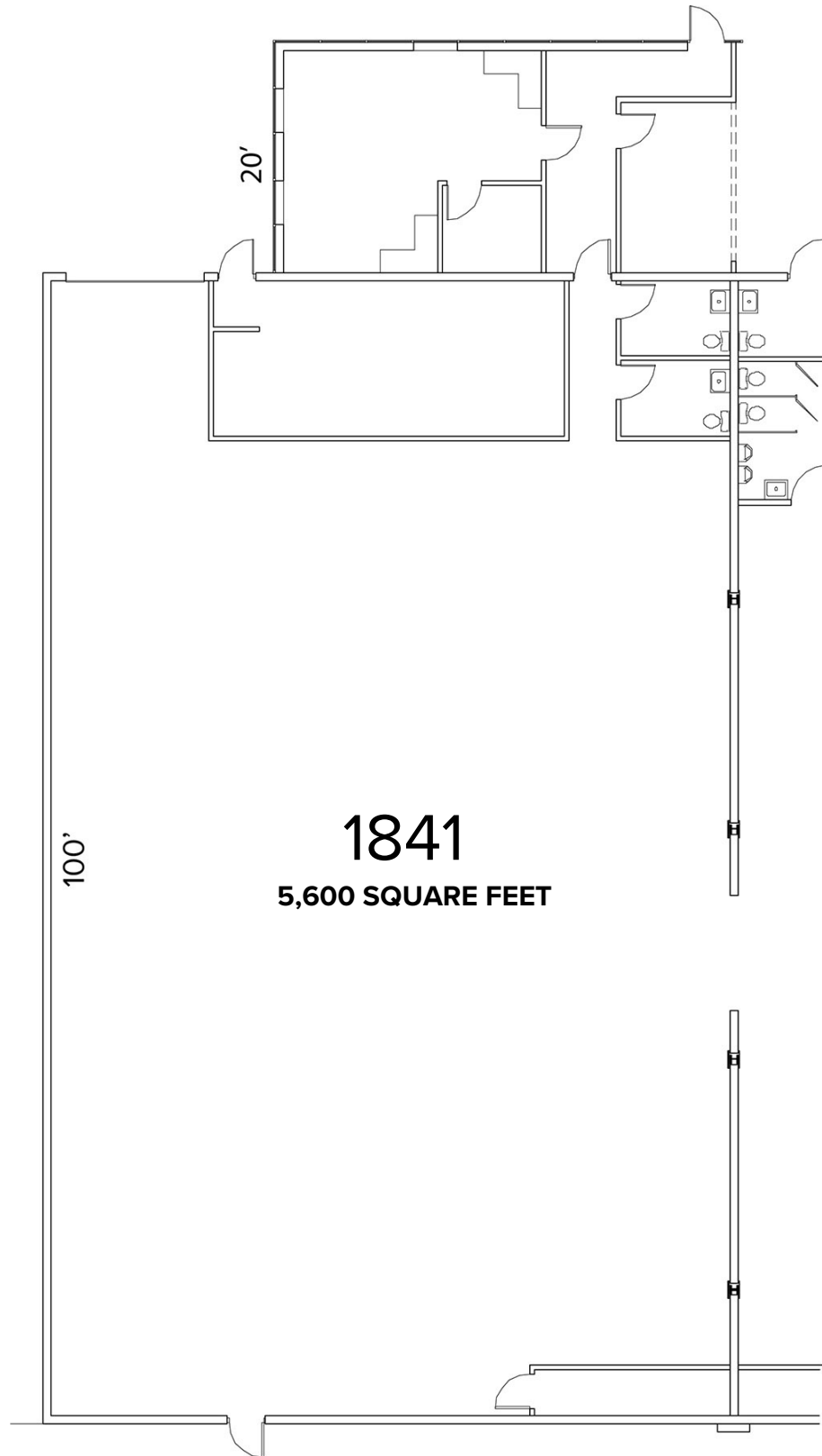
SIGNATURE ASSOCIATES
One Towne Square, Suite 1200
Southfield, MI 48076
www.signatureassociates.com

1827-1855 Northfield Dr. – Rochester Hills, MI

Industrial For Lease

5,600 - 7,412
Square Feet
AVAILABLE

Floor Plan



For more information, please contact:

KRIS PAWLOWSKI
(248) 359 3801
kpawlowski@signatureassociates.com

PAUL HOGE
(248) 948 0103
paulhoge@signatureassociates.com

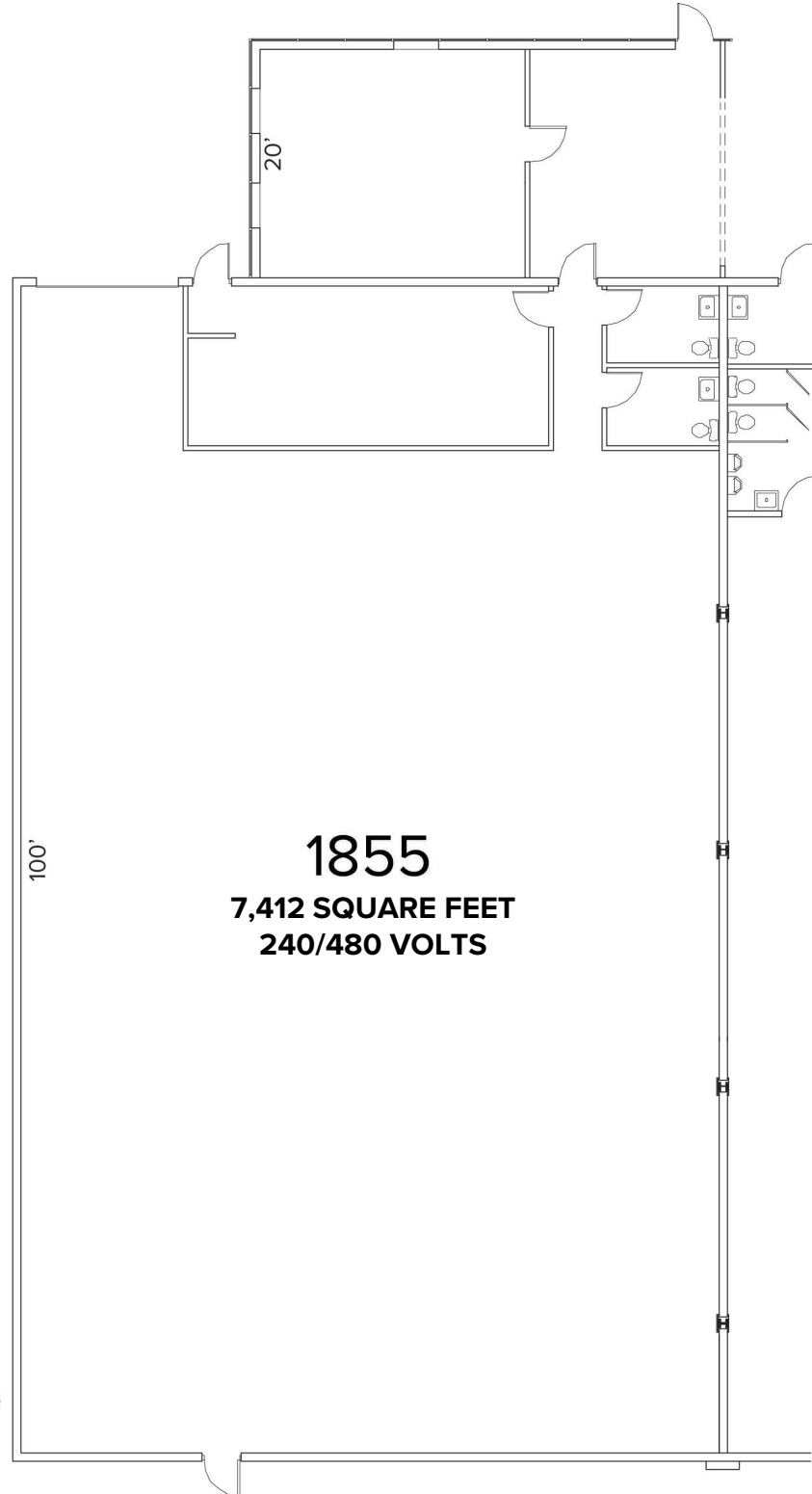
SIGNATURE ASSOCIATES
One Towne Square, Suite 1200
Southfield, MI 48076
www.signatureassociates.com

1827-1855 Northfield Dr. – Rochester Hills, MI

Industrial For Lease

5,600 - 7,412
Square Feet
AVAILABLE

Floor Plan



For more information, please contact:

KRIS PAWLOWSKI
(248) 359 3801
kpawlowski@signatureassociates.com

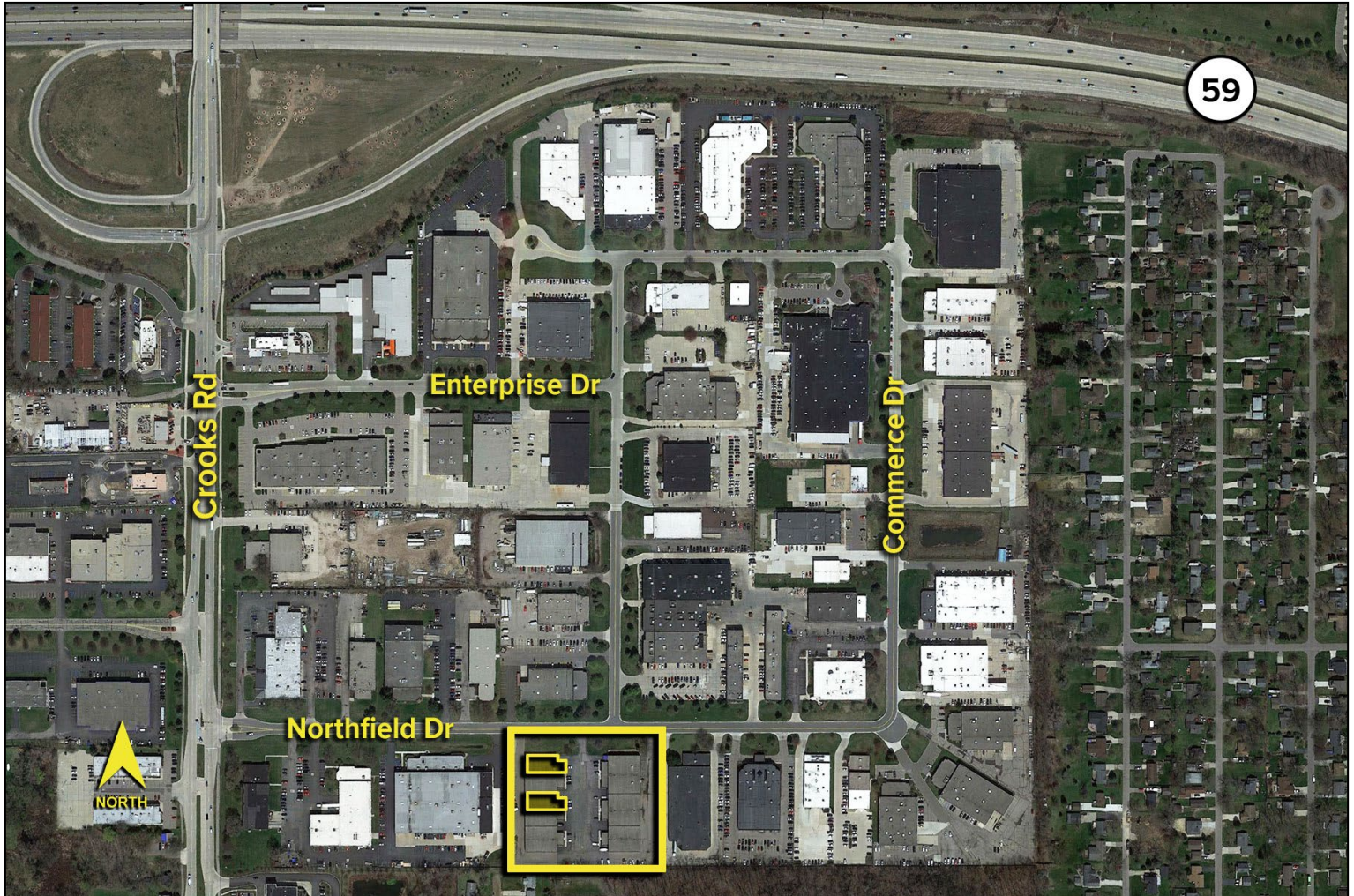
PAUL HOGE
(248) 948 0103
paulhoge@signatureassociates.com

SIGNATURE ASSOCIATES
One Towne Square, Suite 1200
Southfield, MI 48076
www.signatureassociates.com

1827-1855 Northfield Dr. – Rochester Hills, MI
Industrial For Lease

5,600 - 7,412
Square Feet
AVAILABLE

Aerial



For more information, please contact:

KRIS PAWLOWSKI
(248) 359 3801
kpawlowski@signatureassociates.com

PAUL HOGE
(248) 948 0103
paulhoge@signatureassociates.com

SIGNATURE ASSOCIATES
One Towne Square, Suite 1200
Southfield, MI 48076
www.signatureassociates.com