

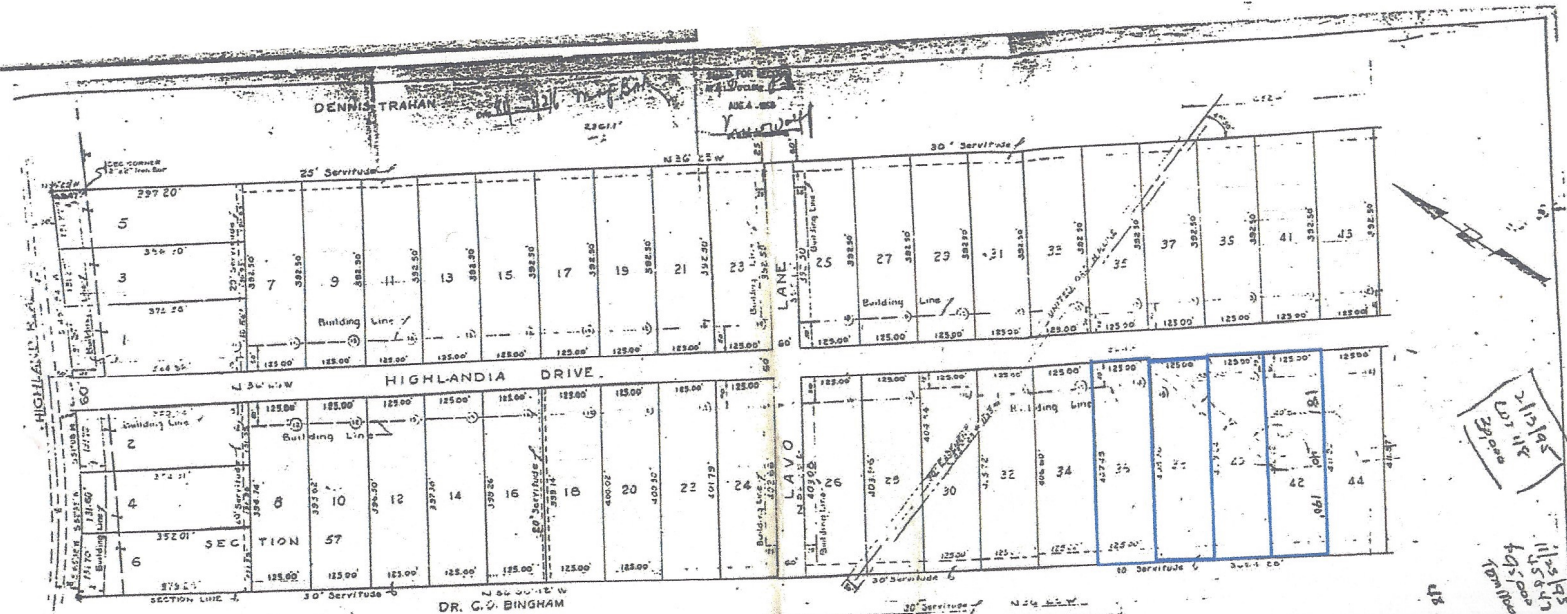
Highlandia Subdivision Lots:

- Lot 36, 552 Highlandia Dr., Drive and Parking Lot
- Lot 40, 636 Highlandia Dr., Building, Drive & Parking
- Lot 42, 655 Highlandia Dr., No Improvements

as of September 21, 2017





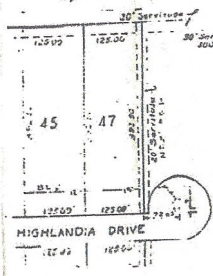


10/19/55  
 11/24/55  
 11/25/55  
 11/26/55  
 11/27/55  
 11/28/55  
 11/29/55  
 11/30/55  
 12/1/55  
 12/2/55  
 12/3/55  
 12/4/55  
 12/5/55  
 12/6/55  
 12/7/55  
 12/8/55  
 12/9/55  
 12/10/55  
 12/11/55  
 12/12/55  
 12/13/55  
 12/14/55  
 12/15/55  
 12/16/55  
 12/17/55  
 12/18/55  
 12/19/55  
 12/20/55  
 12/21/55  
 12/22/55  
 12/23/55  
 12/24/55  
 12/25/55  
 12/26/55  
 12/27/55  
 12/28/55  
 12/29/55  
 12/30/55  
 12/31/55

SECTION 50

NOTE:  
 All lot corners are marked with 2" iron pins  
 Lot Division Centers are marked with 1/2" iron pins

Notes:  
 1. All lots are intended for single-family residential use.  
 2. The servitudes shown on this plat are hereby dedicated to the public for proper purposes.  
 3. The servitudes shown on this plat are hereby dedicated to the public for proper purposes.  
 4. The servitudes shown on this plat are hereby dedicated to the public for proper purposes.



Property shown in Section 50  
 is subject to the provisions of the  
 Act of March 22, 1930 and  
 the Act of March 23, 1930, governing  
 the sale of land in the State of  
 Texas.  
 Date: 10/19/55  
 BY: [Signature]  
 REC'D FOR APPROVAL  
 [Signature]

Know All Men by These Presents  
 That neighbors have hereby caused to be made  
 this plat of Highlandia Subdivisions  
 The Servitudes and Right-of-Way shown on this plat are hereby  
 dedicated to the perpetual use of the public for proper purposes,  
 and the same shall remain in servitude for the use of the public,  
 and no person shall acquire or include a method of doing any  
 business or other purpose for the general interest of the public.  
 Done at Dallas, Texas, this 10th day of October, 1955.  
 [Signature]  
 [Signature]



Hybrid Racing

Lot 35

Superior Office Bldg

Lot 38

626 Highlandia Dr

Keystone Engineering Inc

Highlandia Dr

Lot 40

Apex Technologies

Lot 42

Yoga Studio 90

SOLA Pharmaceuticals

Dr