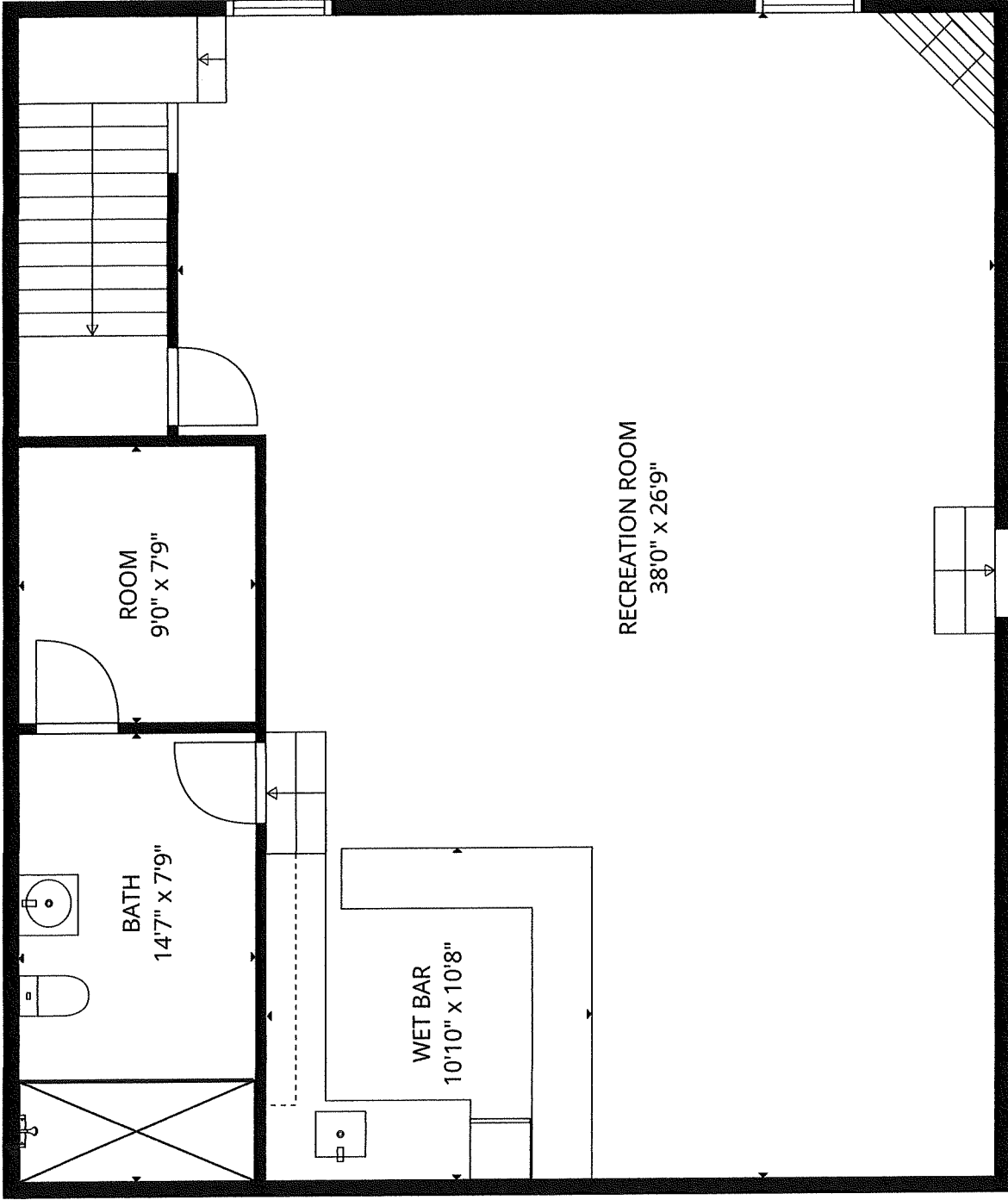
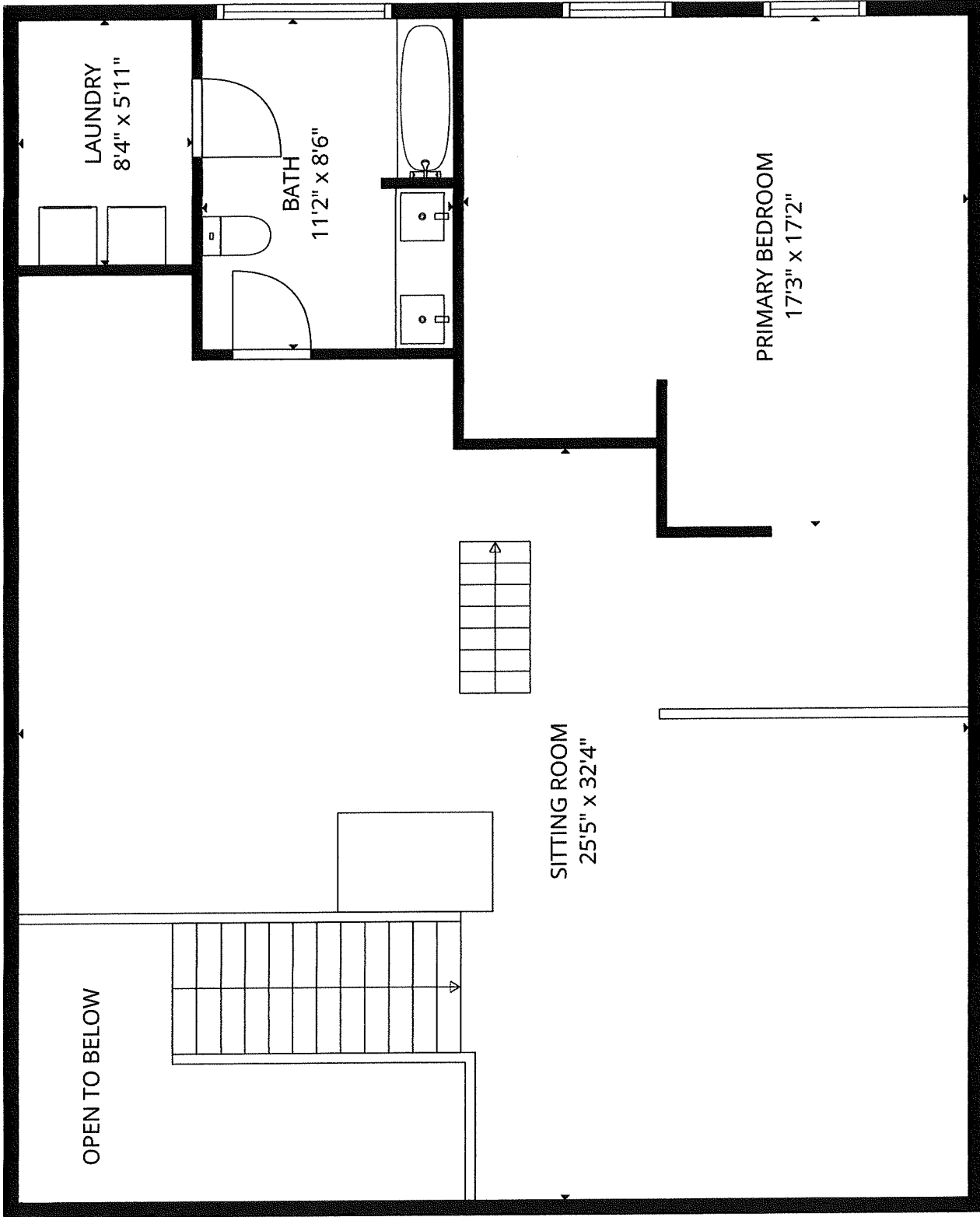


TOTAL: 3944 sq. ft

1st floor: 1216 sq. ft, 2nd floor: 1381 sq. ft, 3rd floor: 1197 sq. ft, 4th floor: 150 sq. ft
 EXCLUDED AREAS: SCREENED PORCH: 1134 sq. ft, OPEN TO BELOW: 96 sq. ft, LOW CEILING: 85 sq. ft,
 WALLS: 297 sq. ft

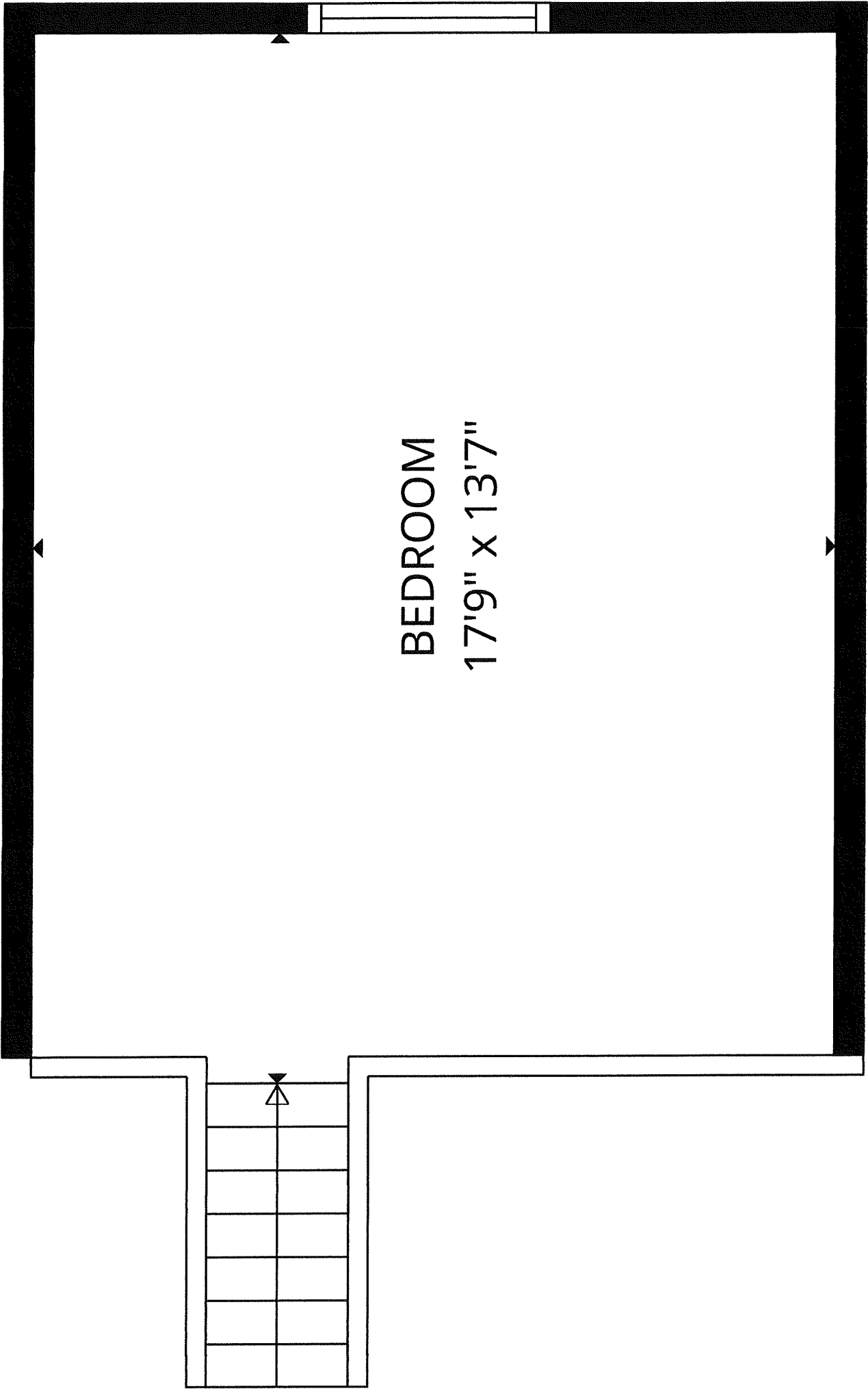


TOTAL: 3944 sq. ft
1st floor: 1216 sq. ft, 2nd floor: 1381 sq. ft, 3rd floor: 1197 sq. ft, 4th floor: 150 sq. ft
EXCLUDED AREAS: SCREENED PORCH: 1134 sq. ft, OPEN TO BELOW: 96 sq. ft, LOW CEILING: 85 sq. ft,
WALLS: 297 sq. ft



TOTAL: 3944 sq. ft

1st floor: 1216 sq. ft, 2nd floor: 1381 sq. ft, 3rd floor: 1197 sq. ft, 4th floor: 150 sq. ft
 EXCLUDED AREAS: SCREENED PORCH: 1134 sq. ft, OPEN TO BELOW: 96 sq. ft, LOW CEILING: 85 sq. ft,
 WALLS: 297 sq. ft



BEDROOM
17'9" x 13'7"

TOTAL: 3944 sq. ft
1st floor: 1216 sq. ft, 2nd floor: 1381 sq. ft, 3rd floor: 1197 sq. ft, 4th floor: 150 sq. ft
EXCLUDED AREAS: SCREENED PORCH: 1134 sq. ft, OPEN TO BELOW: 96 sq. ft, LOW CEILING: 85 sq. ft,
WALLS: 297 sq. ft