



# 3111-3145 Bellbrook Dr.

Memphis, TN 38116

Available for Sublease  
52,784± SF | Industrial



**SITE**  
3111-3145 Bellbrook Dr.

## Suite Available



11- dock doors  
1- drive-in door



Total- 52,784SF



Sublease expires  
3/31/27

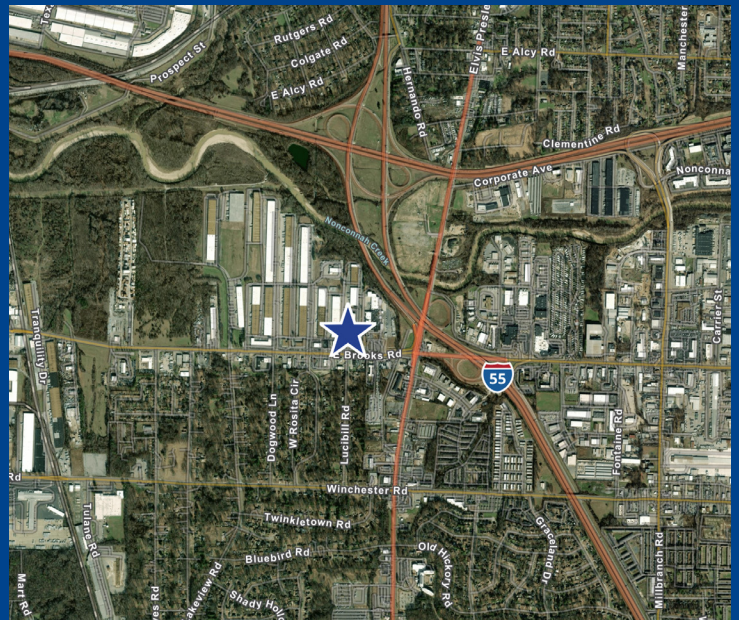


18'  
Clear  
Height

Please contact

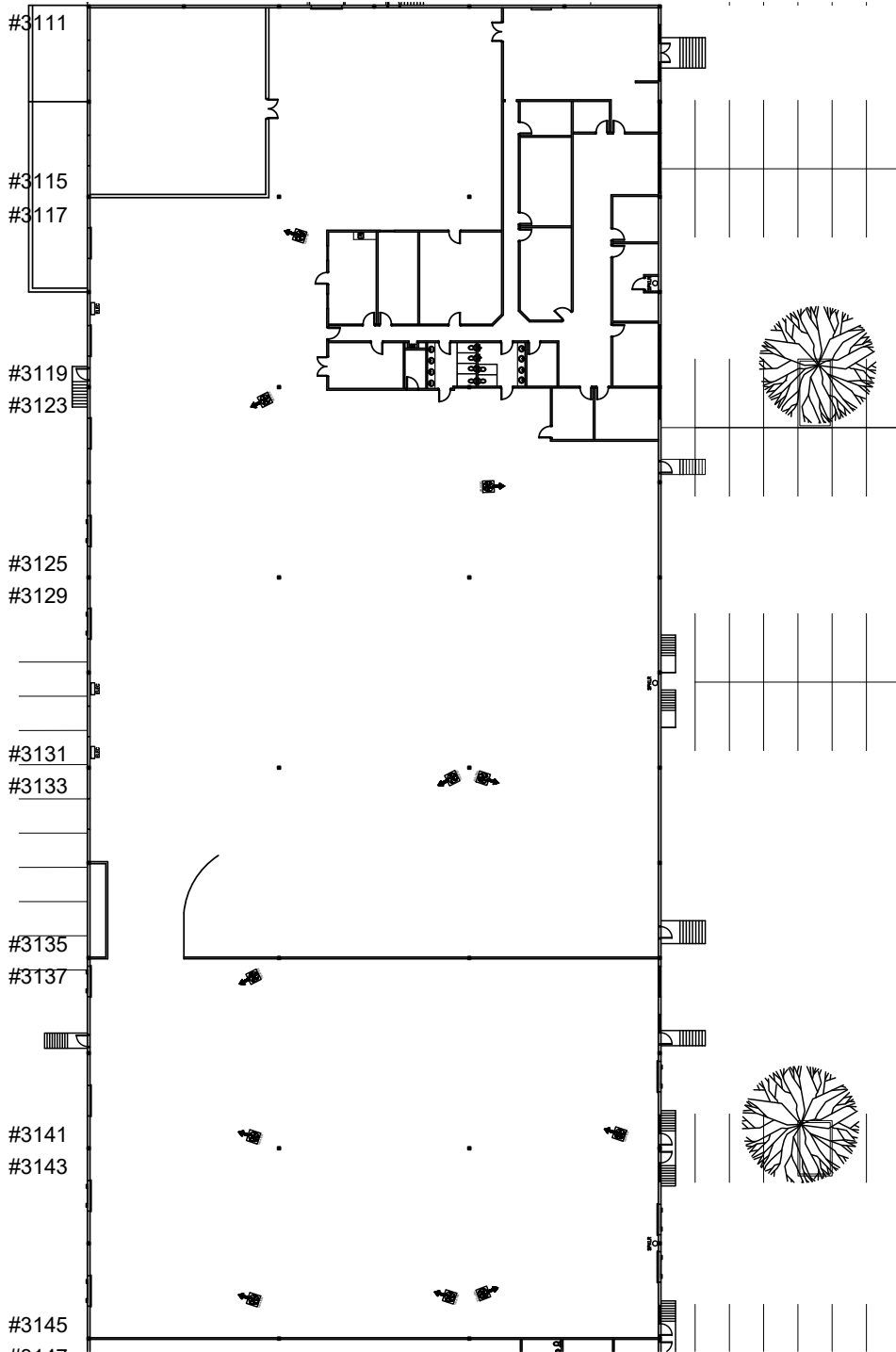
**ELLIOT EMBRY, SIOR**  
901.312.4902  
elliott.embry@colliers.com

**BRYCE DAVES, SIOR**  
901.312.4926  
bryce.daves@colliers.com



[View Online](#)

# Floorplan



Please contact

**ELLIOT EMBRY, SIOR**  
901.312.4902  
elliott.embry@colliers.com

**BRYCE DAVES, SIOR**  
901.312.4926  
bryce.daves@colliers.com



6363 Poplar Ave., Suite 220  
901.375.4800  
colliers.com/memphis