

7335 TOPANGA CANYON BLVD

Canoga Park, California

Office Space for Lease



SPACE AVAILABLE: 1,928 RSF - 4,315 RSF
Half or Full Second Floor

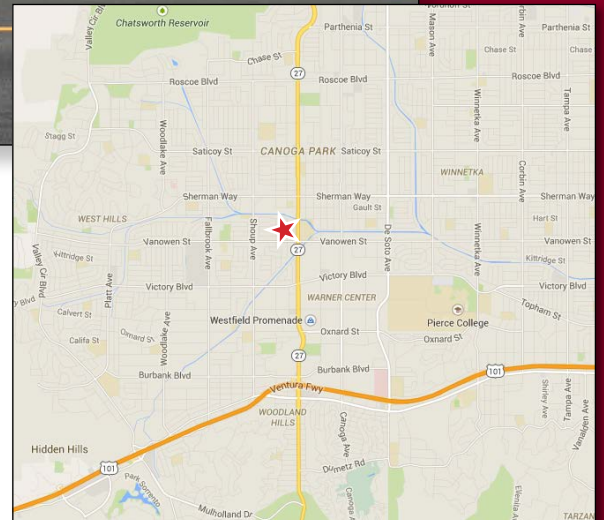
RENTAL RATES: \$1.85/RSF, Modified Gross

- HIGHLIGHTS:**
- ◆ Fully Secured Professional Office Environment
 - ◆ Centrally Located on Topanga Canyon Blvd at Leadwell
 - ◆ Close Proximity to Westfield Topanga Mall & Warner Center
 - ◆ Ample Additional Street Parking

FOR LEASING INQUIRIES CONTACT:

JENNIFER DONALDSON
Principal
DRE # 01317737

818.933.0347
jdonaldson@lee-re.com



LEE & ASSOCIATES

COMMERCIAL REAL ESTATE SERVICES

Lee & Associates®

LA North/Ventura, Inc.

CORPORATE ID #01191898

A Member of the Lee & Associates Group of Companies

15060 Ventura Blvd., Suite 100
Sherman Oaks, CA 91403
P: 818-986-9800 F: 818-783-9260
www.leelanorth.com

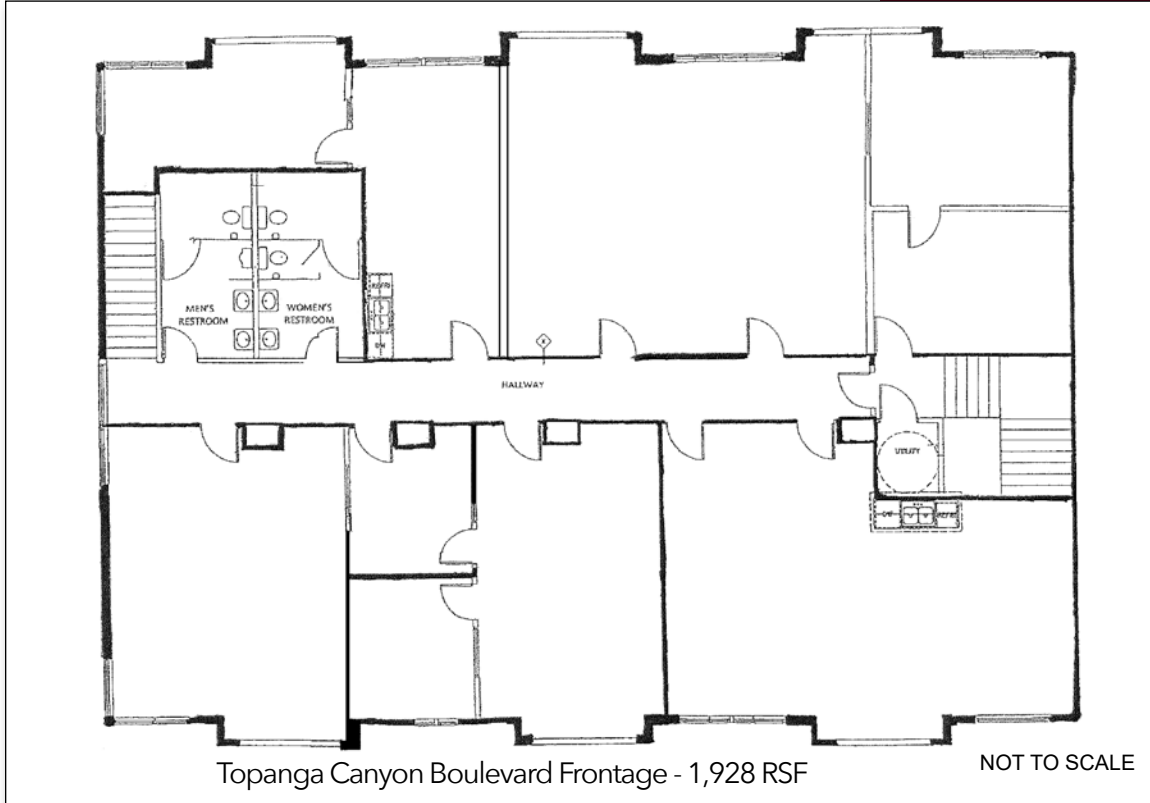
All information furnished regarding the property is from sources deemed reliable, but no warranty or representation is made as to the accuracy thereof. This information is submitted subject to errors, omissions, change of price or terms, prior sale or lease, or withdrawal without notice. No liability of any kind is to be imposed on the broker herein.

7335 TOPANGA CANYON BLVD

Canoga Park, California

Office Space for Lease

Second Floor Plan



FOR LEASING INQUIRIES CONTACT:

JENNIFER DONALDSON
Principal
DRE # 01317737

818.933.0347
jdonaldson@lee-re.com



COMMERCIAL REAL ESTATE SERVICES
Lee & Associates® - LA North/Ventura, Inc.
CORPORATE ID #01191898
A Member of the Lee & Associates Group of Companies

15060 Ventura Blvd., Suite 100
Sherman Oaks, CA 91403
P: 818-986-9800 F: 818-783-9260
www.leelanorth.com

All information furnished regarding the property is from sources deemed reliable, but no warranty or representation is made as to the accuracy thereof. This information is submitted subject to errors, omissions, change of price or terms, prior sale or lease, or withdrawal without notice. No liability of any kind is to be imposed on the broker herein.