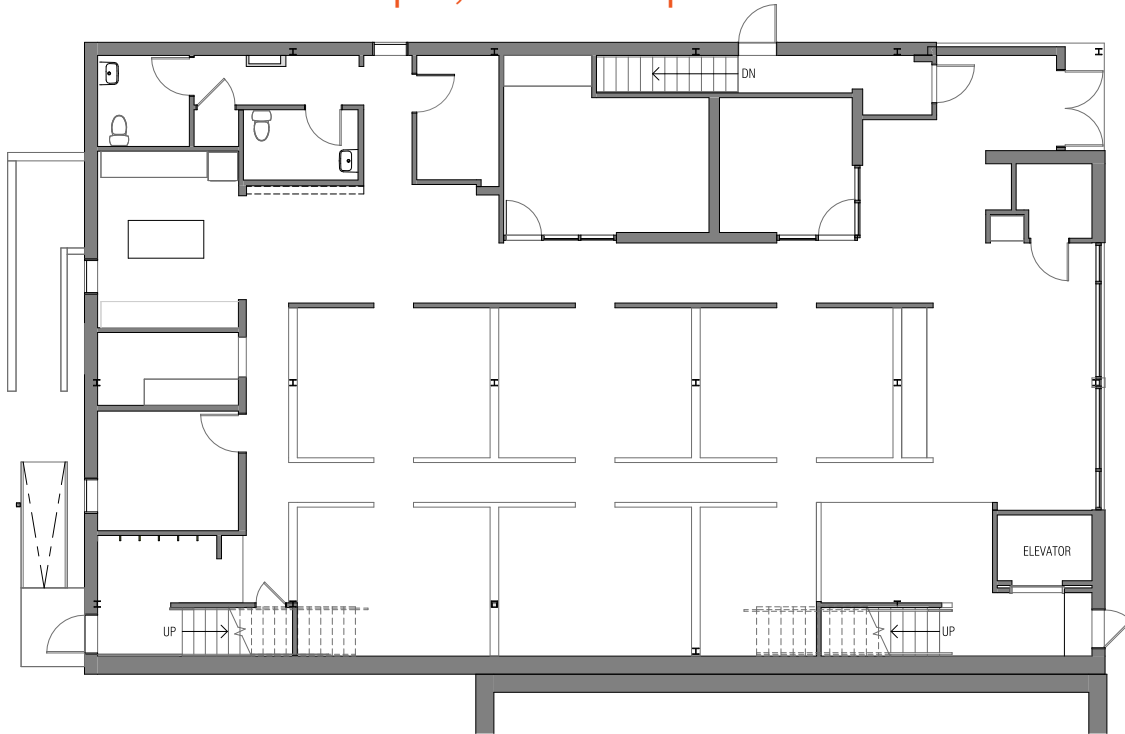


Office / Service Retail Space for Lease

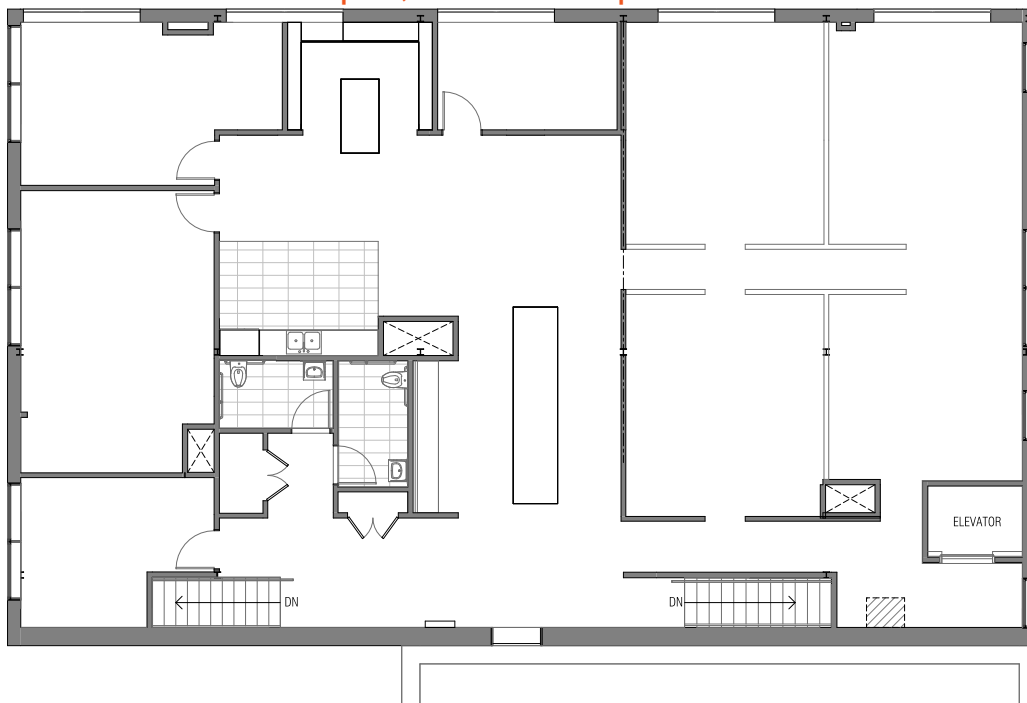
FIRST & SECOND FLOOR | 3,794 – 9,397 RSF FULL BUILDING

115 15TH AVE E, SEATTLE, WA 98112

First Floor | 3,794 RSF | Renovated 2016



Second Floor | 3,888 RSF | Renovated 2020



FOR MORE INFO
CONTACT

BOJIDAR GABROVSKI
JACK DEANE
JACK FRANZ

bgabrovski@orioncp.com
jdeane@orioncp.com
jfranz@orioncp.com

847.275.8474
206.707.1315
925.482.7232

1218 Third Ave, Suite 2200
Seattle, WA 98101
www.orioncp.com

ORION
COMMERCIAL PARTNERS