

For Sale

**2700 North Berkeley Rd NW,
Suite 210
Duluth, GA 30096**

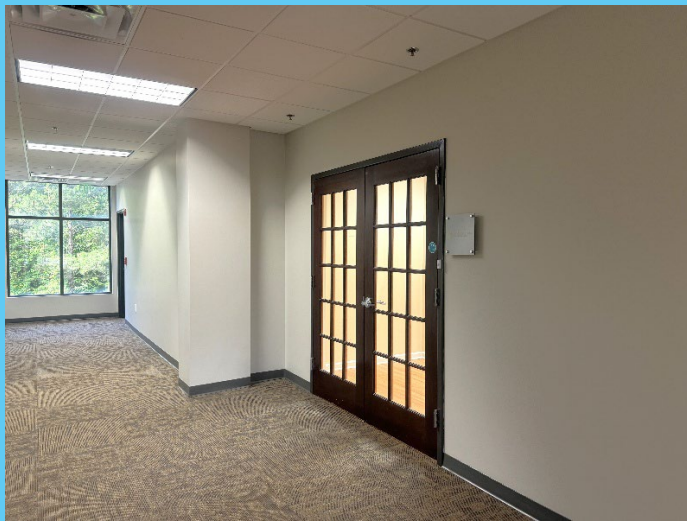
Gwinnett County

Executive Office Condo

Available Space: 1,971 SF

Highlights:

- Well-maintained
- Walkable amenities include restaurants, retail and hotels
- Available for immediate occupancy
- Located on the second level of the building
- Plenty of parking (103 parking spaces)
- Immediate access to Interstate I-85 and Pleasant Hill Road



Vicki Xia, 404-483-4816, vyxia@yahoo.com

Exclusively Offered by JCG Realty LLC

The information has been provided by reliable sources, but we make no warranties. Users are advised to independently verify the accuracy of the information.

**2700 North Berkeley Rd NW,
Suite 210
Duluth, GA 30096**

Speculative Suite Features

- Reception area
- Large meeting room with French door
- Female and male bathrooms
- Breakroom
- 5 office rooms
- Storage closets



Vicki Xia, 404-483-4816, vyxia@yahoo.com

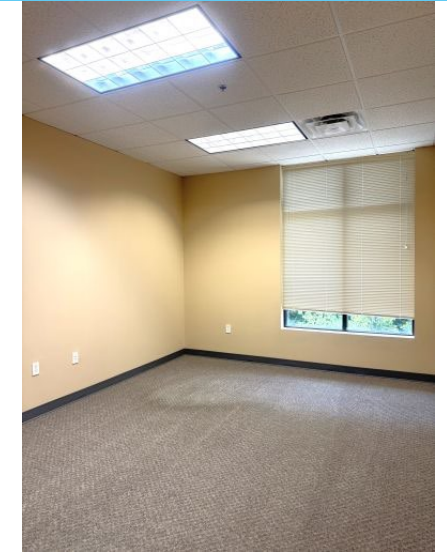
Exclusively Offered by JCG Realty LLC

The information has been provided by reliable sources, but we make no warranties. Users are advised to independently verify the accuracy of the information.

**2700 North Berkeley Rd NW,
Suite 210
Duluth, GA 30096**

For Sale

Gwinnett County

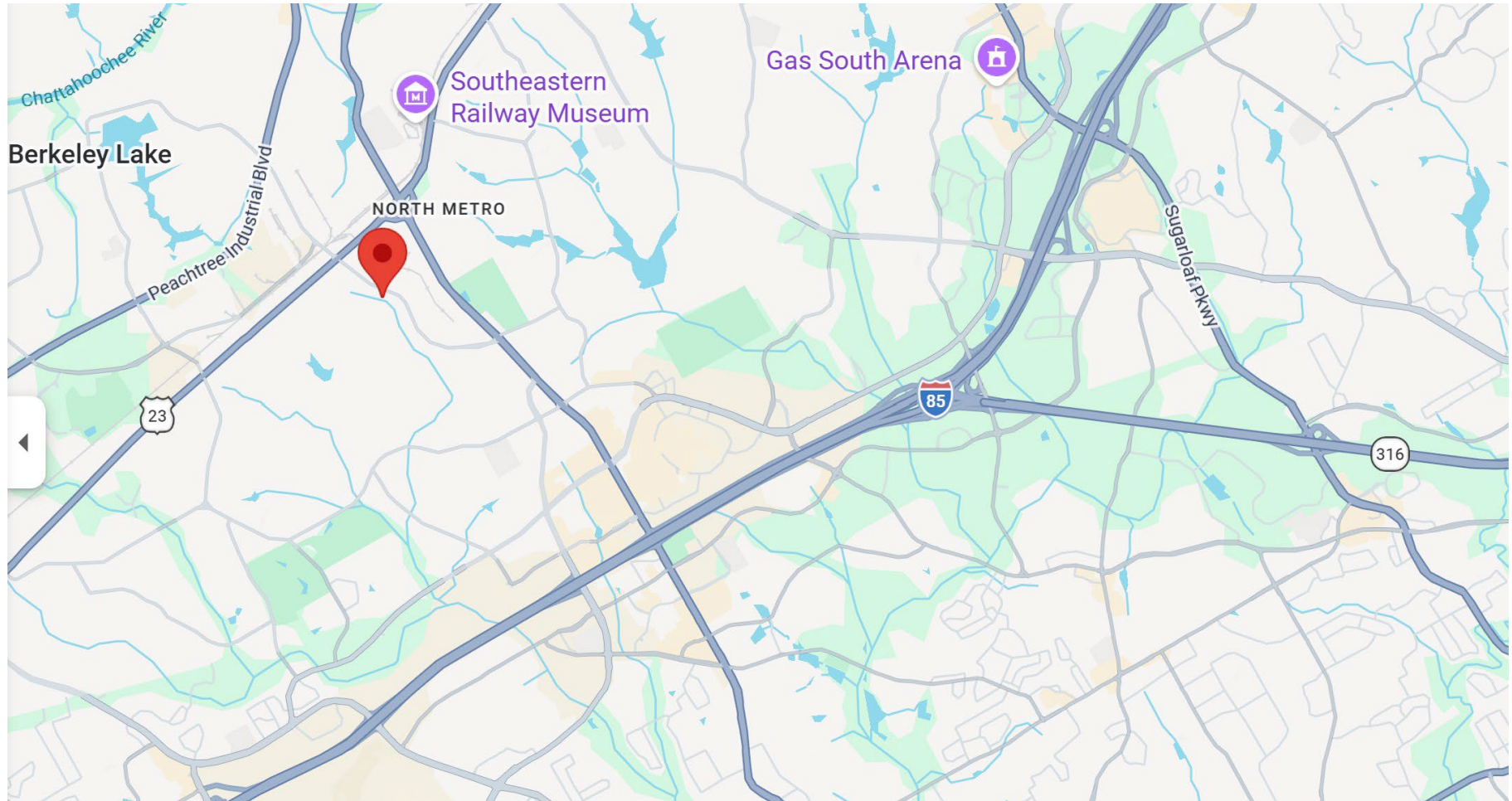


Vicki Xia, 404-483-4816, vyxia@yahoo.com

Exclusively Offered by JCG Realty LLC

The information has been provided by reliable sources, but we make no warranties. Users are advised to independently verify the accuracy of the information.

Location Map

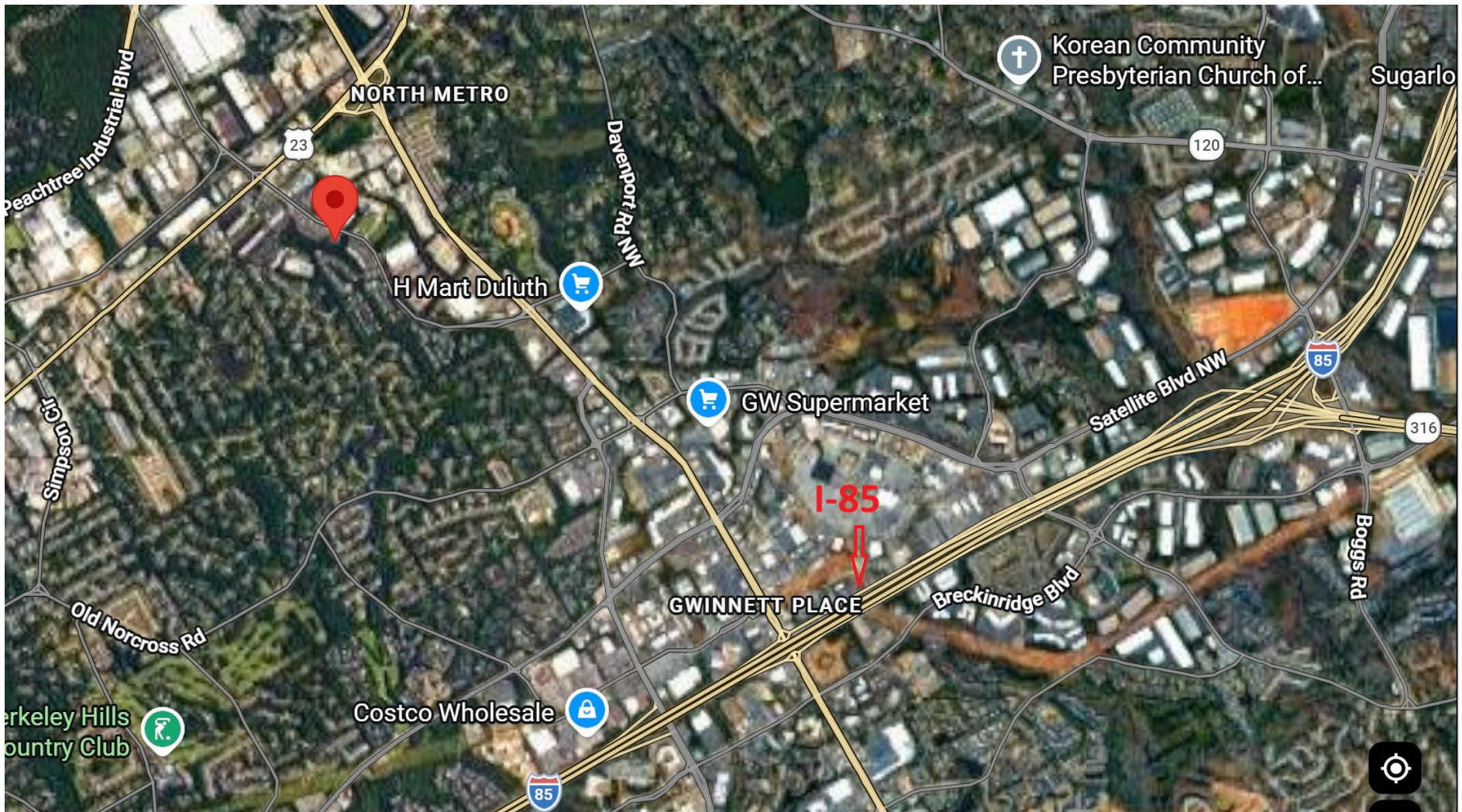


Vicki Xia, 404-483-4816, vyxia@yahoo.com

Exclusively Offered by JCG Realty LLC

The information has been provided by reliable sources, but we make no warranties. Users are advised to independently verify the accuracy of the information.

Aerial Map



Vicki Xia, 404-483-4816, vyxia@yahoo.com

Exclusively Offered by JCG Realty LLC

The information has been provided by reliable sources, but we make no warranties. Users are advised to independently verify the accuracy of the information.