



Sublease Opportunity

9468 N Macrum Ave
Portland, OR 97203

Features:

- Fenced and secured yard
- Minutes from I5 freeway
- Clear span structure
- 3 drive-ins at grade
- 24' building height
- Off street parking – 6 lined spaces
- +/- 1 AC of fenced and secured yard
- Located in St. Johns neighborhood

Space Profile:

Total AC	1.28	Availability	Immediate
Building SF	13,200 (~2,400 Office)	Lease Term	Thru March 2027
Office SF	TBD	Submarket	Northeast
Lease Rate	Call for Rate	Built	1957

Contact:



Hayley Mueller
503.341.9034
hmueller@cresa.com

Yard



Office



Sublease Opportunity

9468 N Macrum Ave

Gated Entrance



Shop



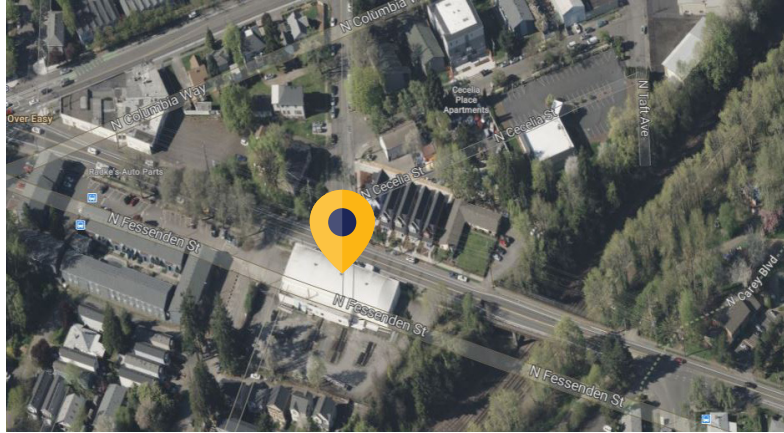
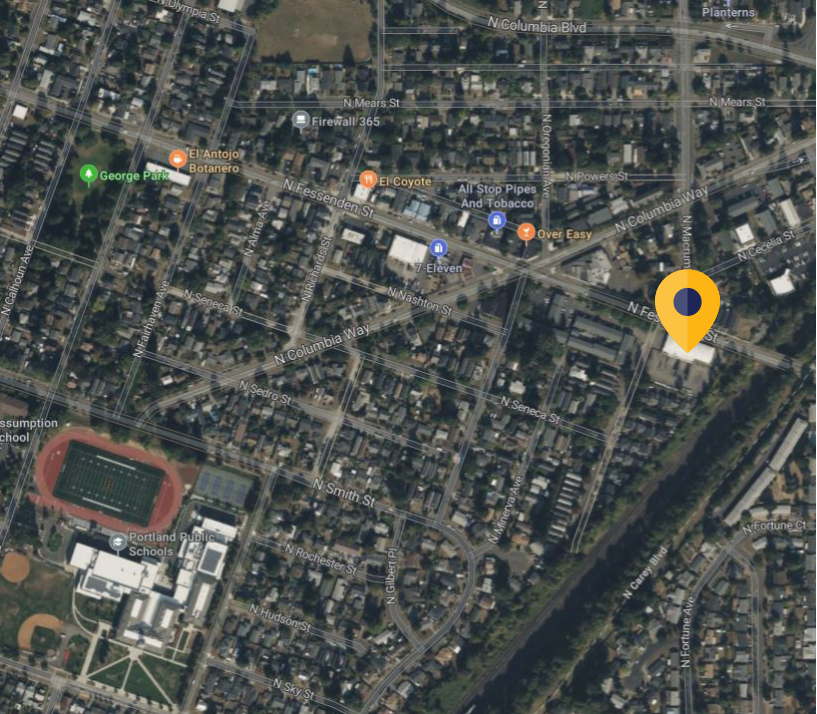
Warehouse



cresa

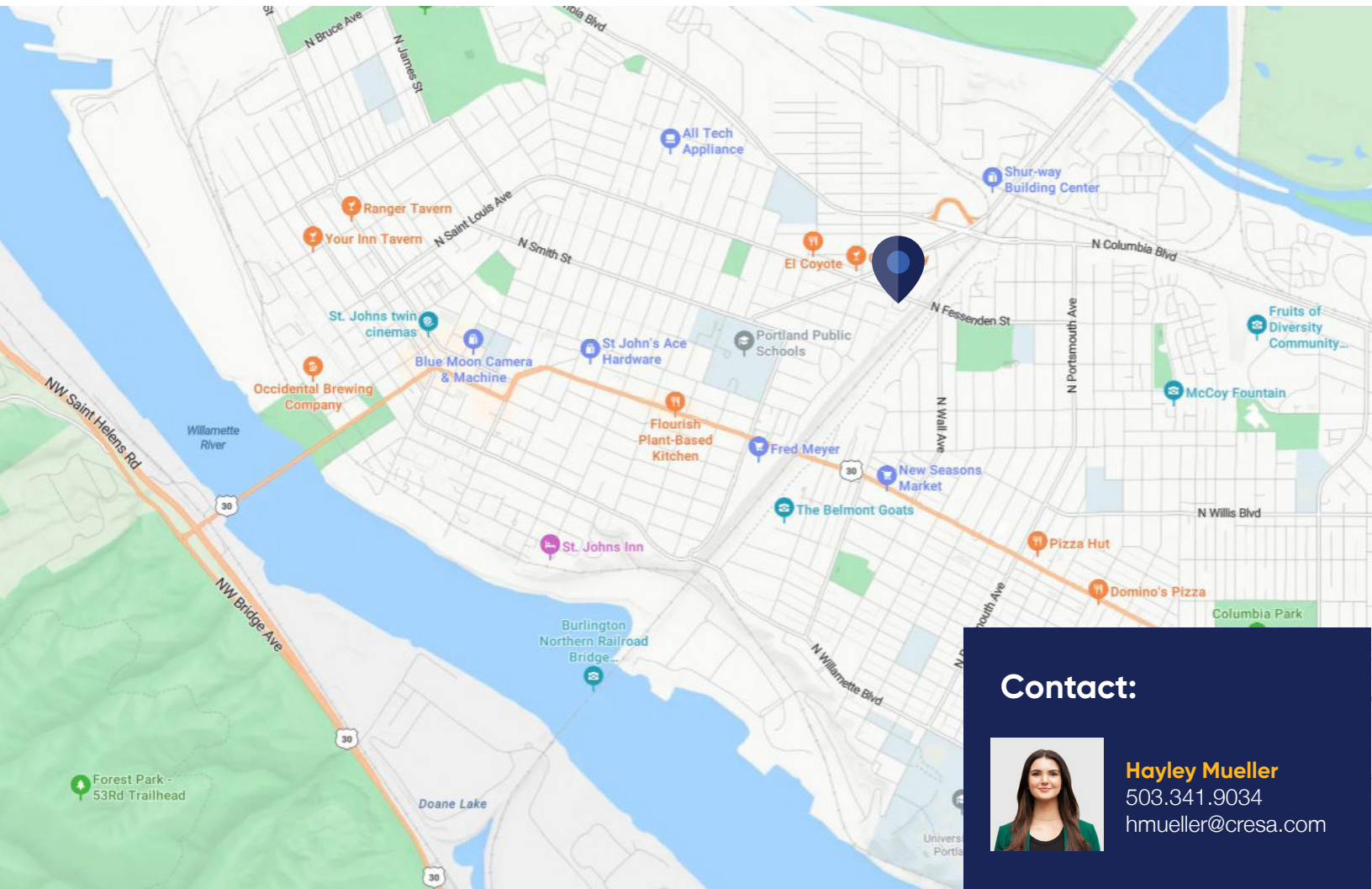
1355 NW Everett St Suite 100 | Portland, OR 97209

cresa.com/Portland



Sublease Opportunity

9468 N Macrum Ave



Contact:



Hayley Mueller
503.341.9034
hmueller@cresa.com



Cresa © 2024. All rights reserved. The information contained in this document has been obtained from sources believed reliable. While Cresa does not doubt its accuracy, Cresa has not verified it and makes no guarantee, warranty, or representation about it. It is your responsibility to independently confirm its accuracy and completeness. Any projections, opinions, assumptions or estimates used are for example only and do not represent the current or future performance of the property. The value of this transaction to you depends on tax and other factors which should be evaluated by your tax, financial and legal advisors. You and your advisors should conduct a careful, independent investigation of the property to determine to your satisfaction the suitability of the property for your needs.