

Plan to Accompany Abbreviated Notice Of Resource Area Delineation

In
WAKEFIELD, MASS.

Hayes Engineering, Inc.
Civil Engineers & Land Surveyors
603 Salem Street
Wakefield, MA 01880

Telephone: 781.246.2800
Facsimile: 781.246.7596
www.hayeseng.com

Scale: 1" = 40'



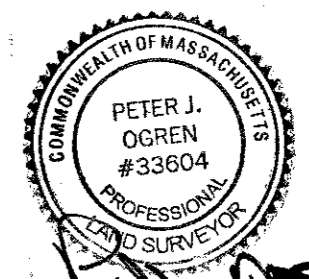
June 23, 2011
Rev.: November 17, 2011

#50 Quannapowitt Parkway

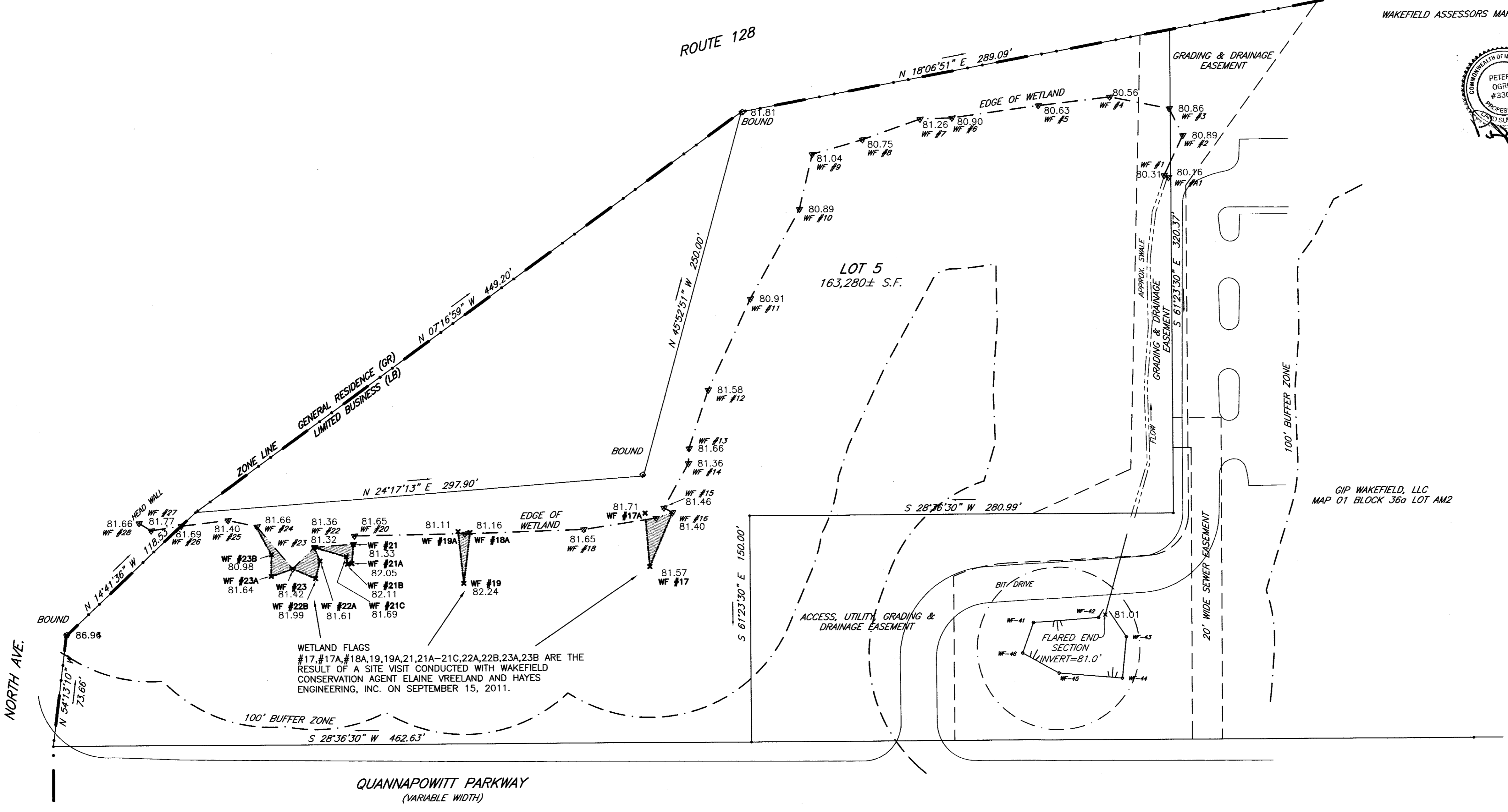
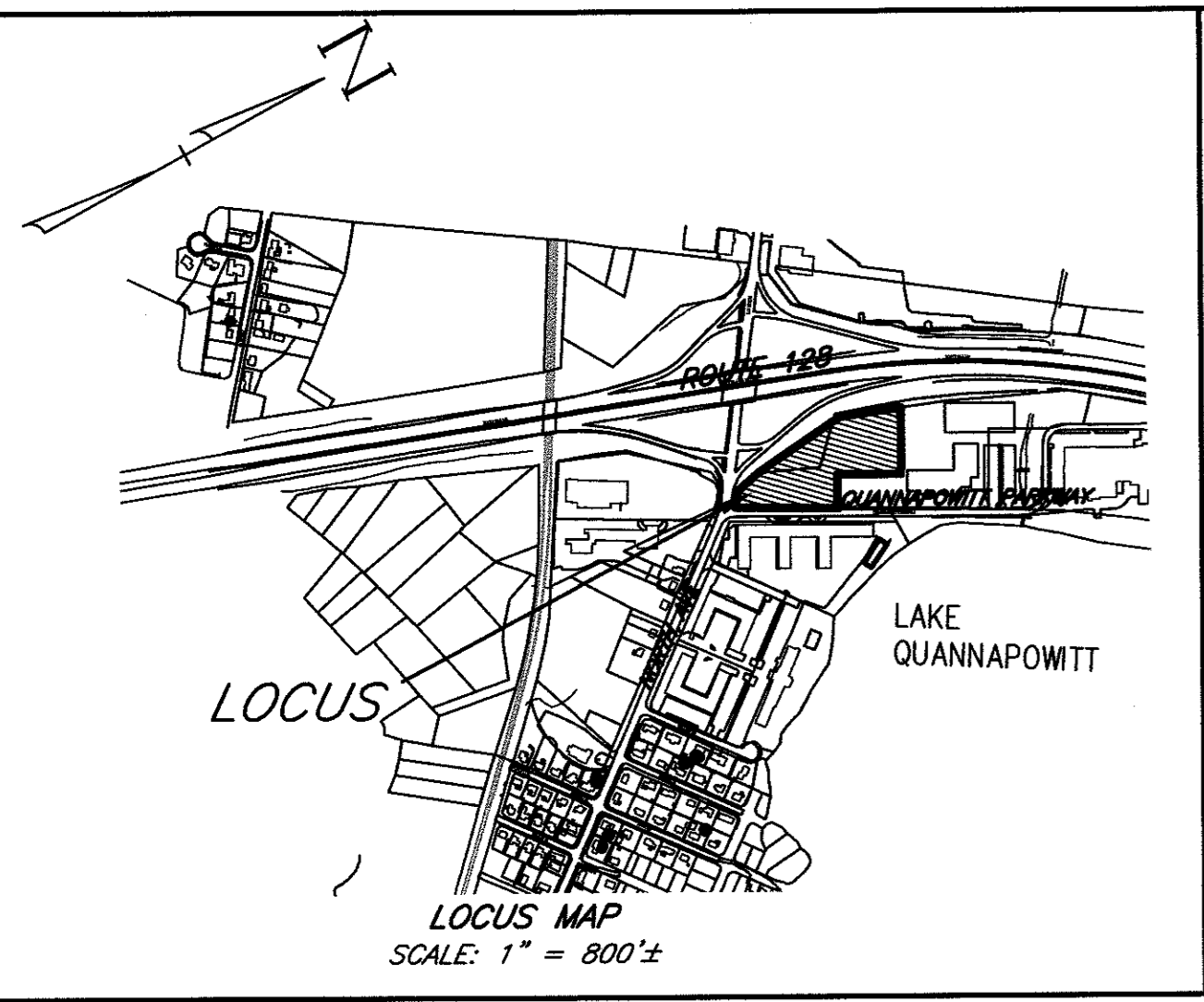
APPLICANT: The Beal Companies, LLP
177 Milk Street
Boston, MA 02109

OWNER: Wakefield 200 LLC
Book 30314 Page 195
Certificate #215277

WAKEFIELD ASSESSORS MAP 01 BLOCK 36B LOT AM3



Nov. 17, 2011



WETLAND FLAGS #17, #17A, #18A, #19, #19A, #21A-21C, #22A, #22B, #23A, #23B ARE THE RESULT OF A SITE VISIT CONDUCTED WITH WAKEFIELD CONSERVATION AGENT ELAINE VREELAND AND HAYES ENGINEERING, INC. ON SEPTEMBER 15, 2011.

GIP WAKEFIELD, LLC
MAP 01 BLOCK 36a LOT AM2

LIMITED BUSINESS (LB)
MINIMUM SETBACKS:
FRONT = 50'
SIDE = 20'
REAR = 20'
MIN. FRONTAGE = 150'
MIN. LOT AREA = 40,000 S.F.
FLOOR AREA RATIO = 1.5
MAX BUILDING COVERAGE = 40%
MIN. OPEN AREA = 30%

NOTE:
1.) ELEVATIONS BASED ON NAVD88.
2.) WETLAND FLAGS #1 - #28 DELINEATED AND LOCATED BY HAYES ENGINEERING INC., JUNE 14, 2011.
3.) WETLAND FLAGS #41 - #46, DRIVEWAY AND SWALE OBTAINED FROM A PLAN TITLED "GRADING PLAN" BY BEALS AND THOMAS, INC. DATED NOVEMBER 21, 2008 BEING SHEET 3 OF 8.
4.) PERIMETER REFERENCE: PLAN 633 OF 1999 AS RECORDED AT THE MIDDLESEX REGISTRY OF DEEDS, SOUTHERN DISTRICT.