

FOR LEASE



1965 & 1917 W. FIRST STREET
TEMPE, ARIZONA

FEATURES

- ▶ ±33,400 SF
- ▶ Sky Harbor Business Park - Tempe
- ▶ ±2.06 Acres
- ▶ I-1, City of Tempe Zoning
- ▶ ±6,930 SF A/C Office Area
- ▶ ±26,000 SF EVAP Cooled Warehouse
- ▶ 20' Clear Height
- ▶ Two (2) Grade Level Doors
- ▶ Five (5) Truckwell Doors
- ▶ 76 Parking Spaces
- ▶ Attractive Xeriscape Desert Landscaping
- ▶ Constructed in 1994 and 1999

LOCATION



CONTACT INFO

Ken McQueen
Principal
kmcqueen@leearizona.com
602.474.9561

Blake Peters
Principal
bpeters@leearizona.com
602.474.9561

Chris McClurg, SIOR
Principal
cmcclurg@leearizona.com
602.912.3532

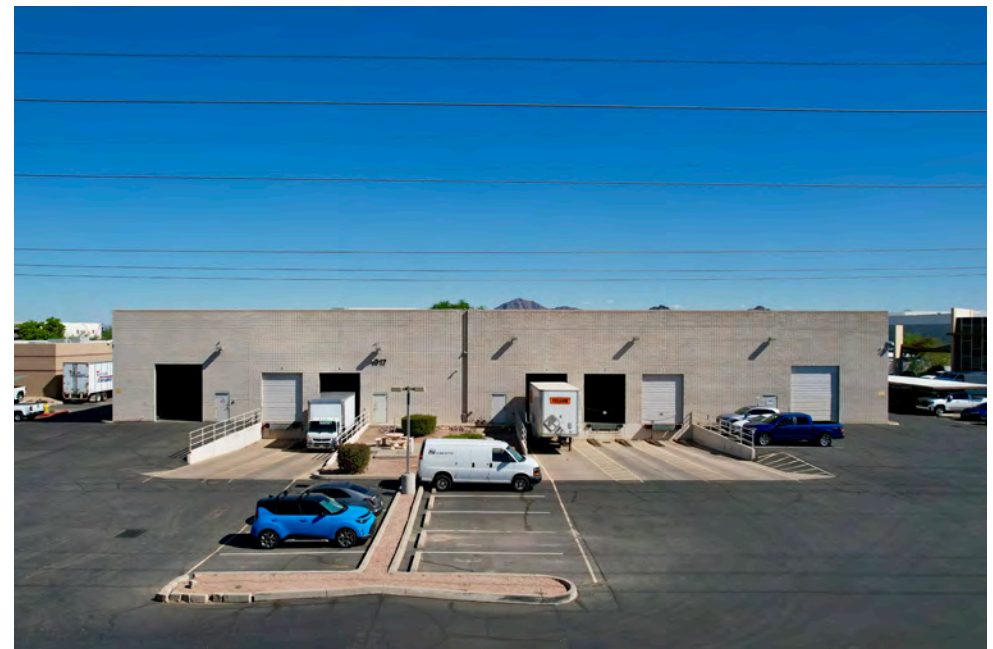
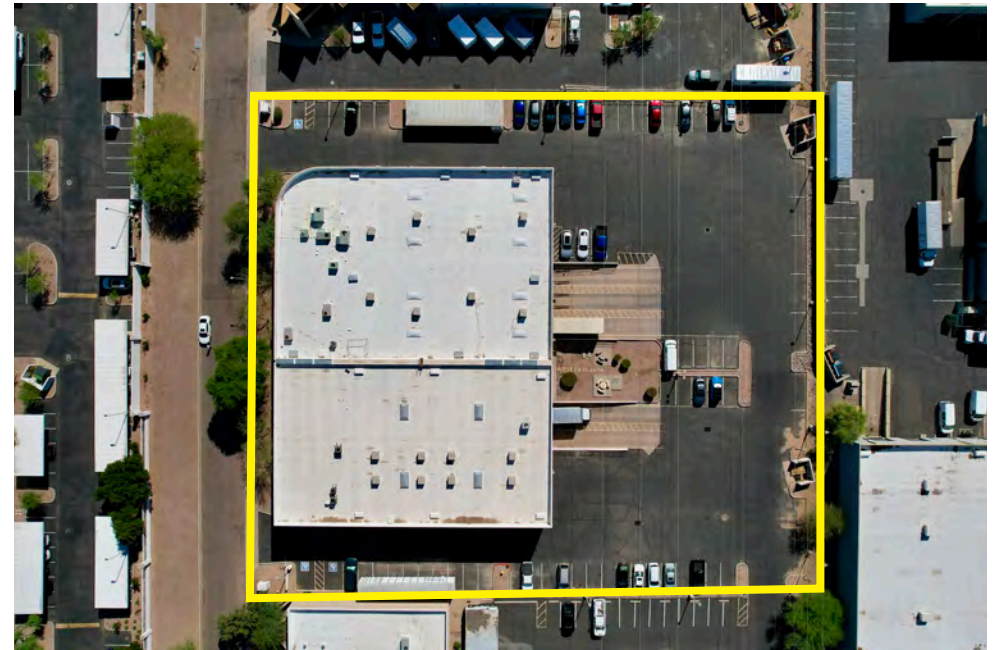
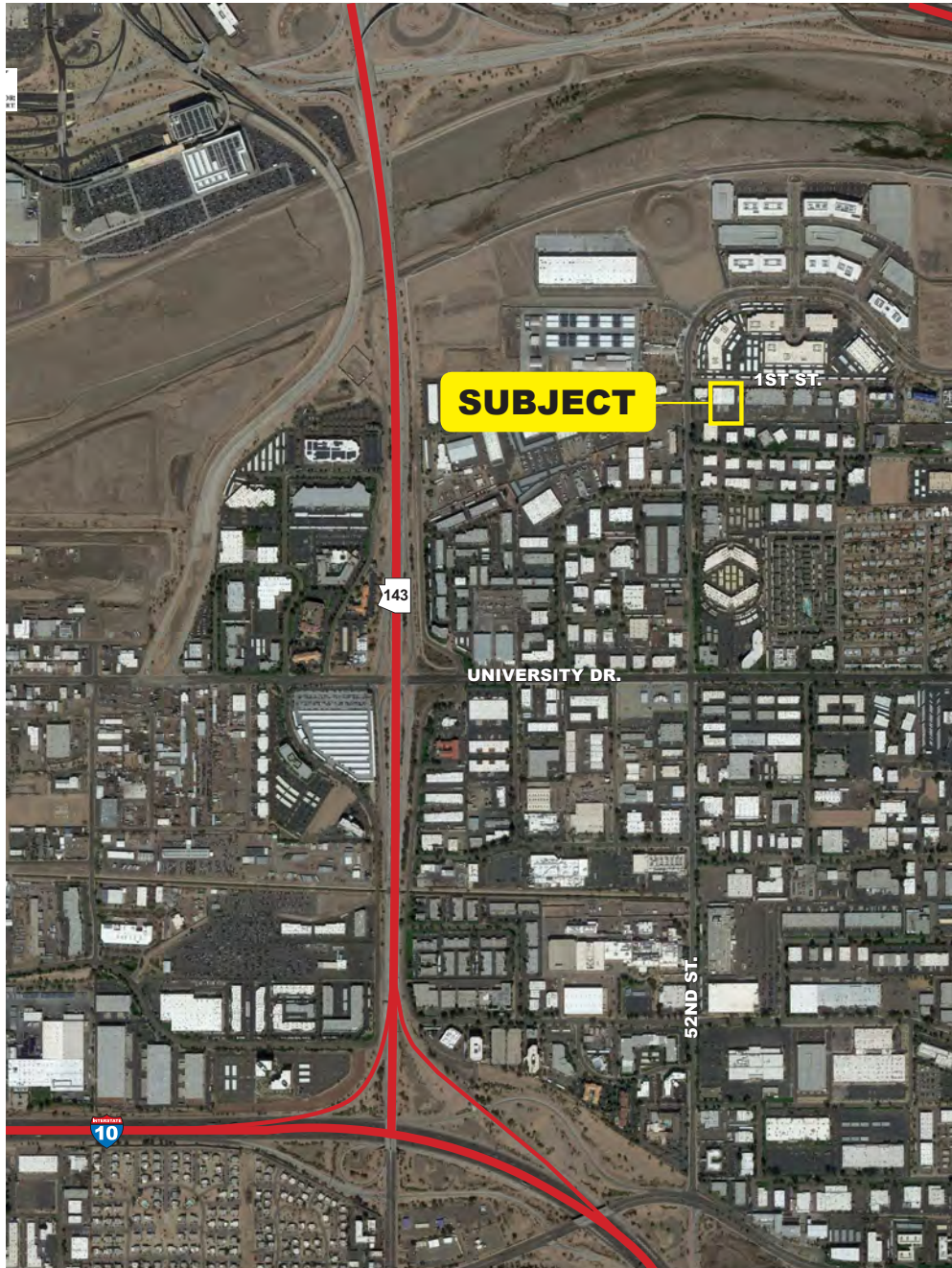
Jack Sims
Associate
jsims@leearizona.com
602.912.3532

All information furnished regarding property for sale, rental or financing is from sources deemed reliable, but no warranty or representation is made to the accuracy thereof and same is submitted to errors, omissions, change of price, rental or other conditions prior to sale, lease or financing or withdrawal without notice. No liability of any kind is to be imposed on the broker herein.



1965 & 1917 W. FIRST STREET

TEMPE, ARIZONA

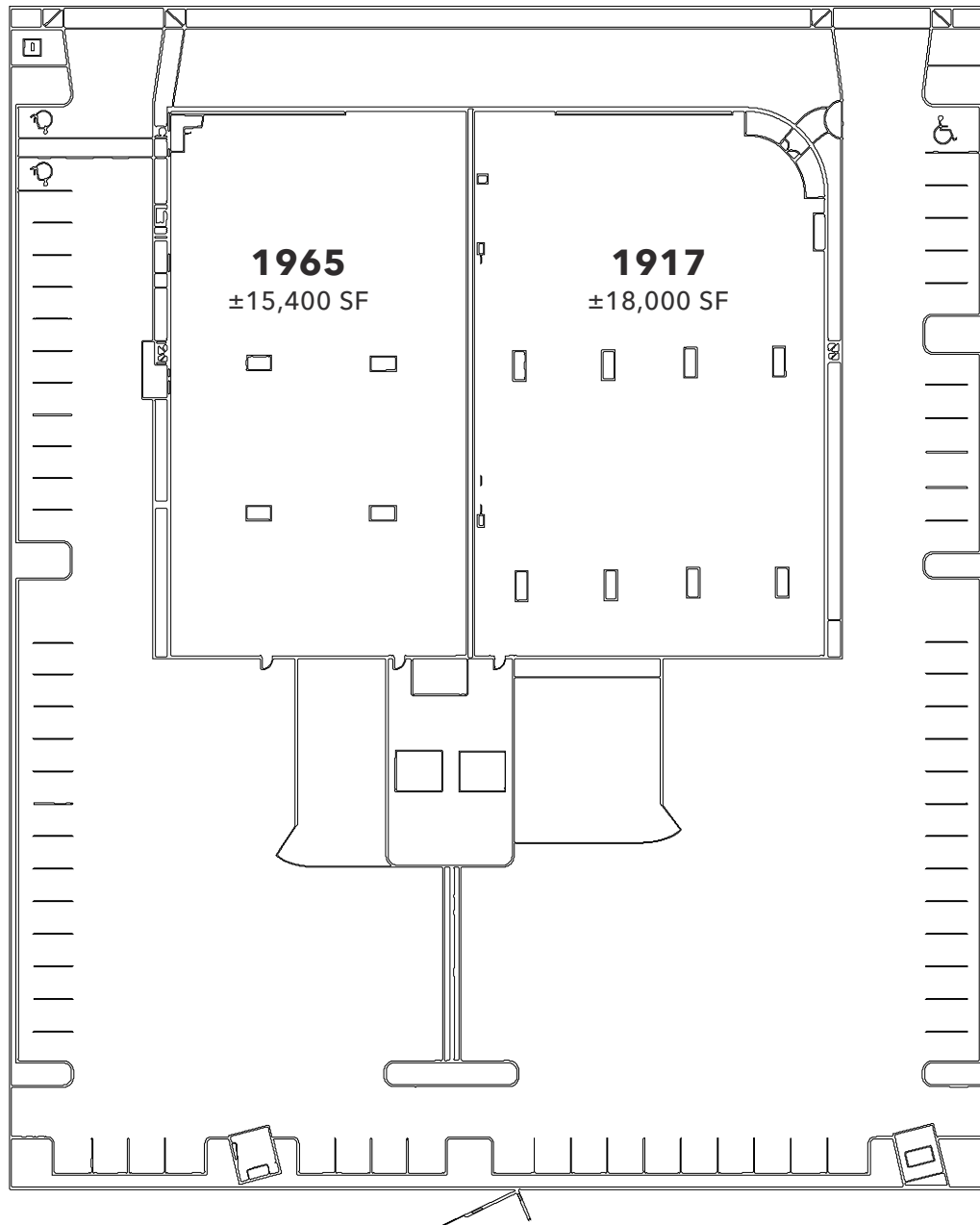




1965 & 1917 W. FIRST STREET

TEMPE, ARIZONA

±30,400 SF Total



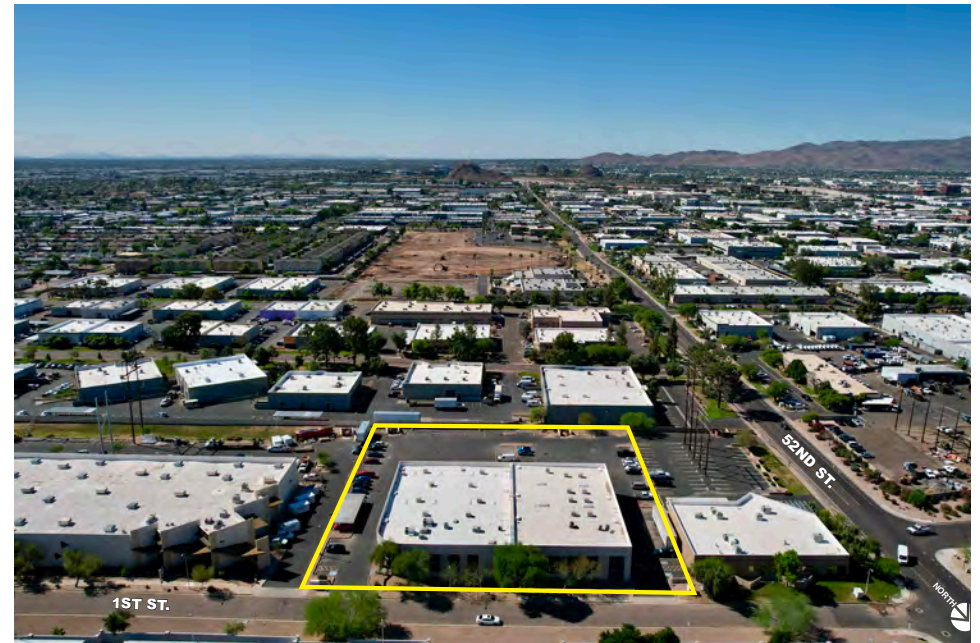
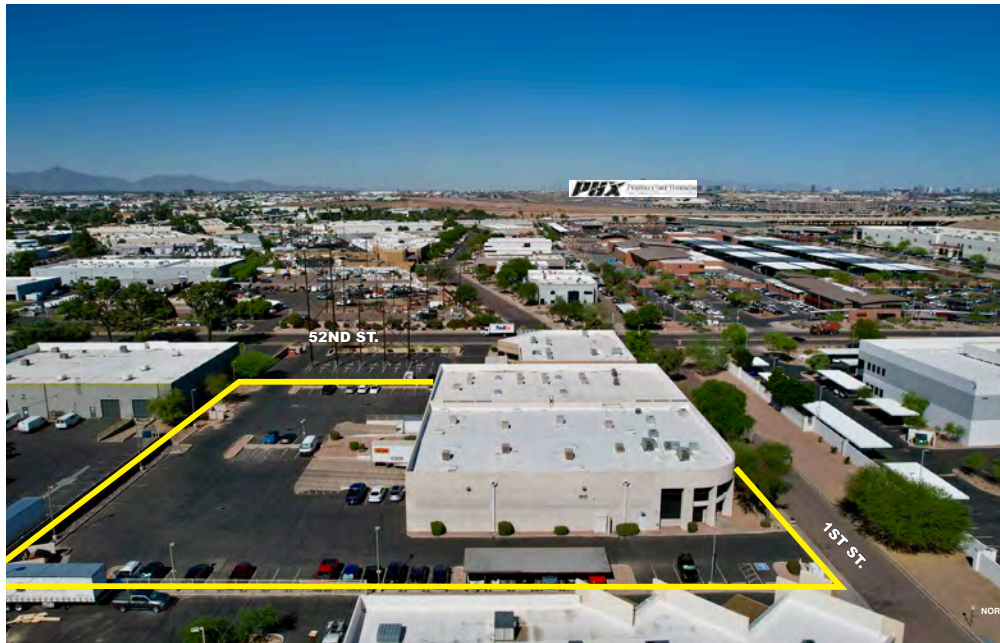
1965 WEST FIRST STREET

- ▶ ±15,400 SF Masonry Building
- ▶ Constructed by LGE Design in 1999
- ▶ ±12,450 SF Footprint
- ▶ ±2,950 SF 2nd Flr Office/Mezzanine
- ▶ One (1) Grade Level Door
- ▶ Two-Position Truckwell (2 Doors)
- ▶ EVAP Cooled Warehouse

1917 WEST FIRST STREET

- ▶ ±18,000 SF Masonry Building
- ▶ Constructed by LGE Design in 1994
- ▶ ±15,000 SF Footprint
- ▶ ±3,000 SF Second Floor Office
- ▶ One (1) Grade Level Door
- ▶ Three Position Truckwell (3 Doors)
- ▶ EVAP Cooled Warehouse

1965 & 1917 W. FIRST STREET
TEMPE, ARIZONA



1965 & 1917 W. FIRST STREET
TEMPE, ARIZONA

