

MASON
Commercial
Real Estate

Johnny Begzos
President
214-681-9337
jb@masoncre.com



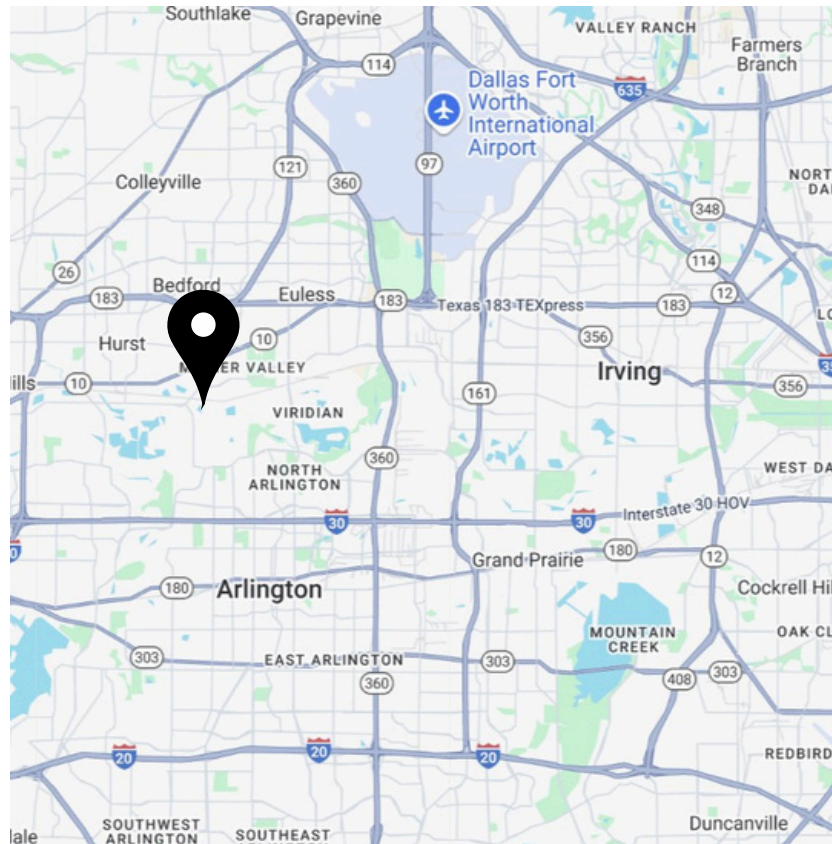
11320 Mosier Valley Rd.
Euless, TX 76040

FOR LEASE

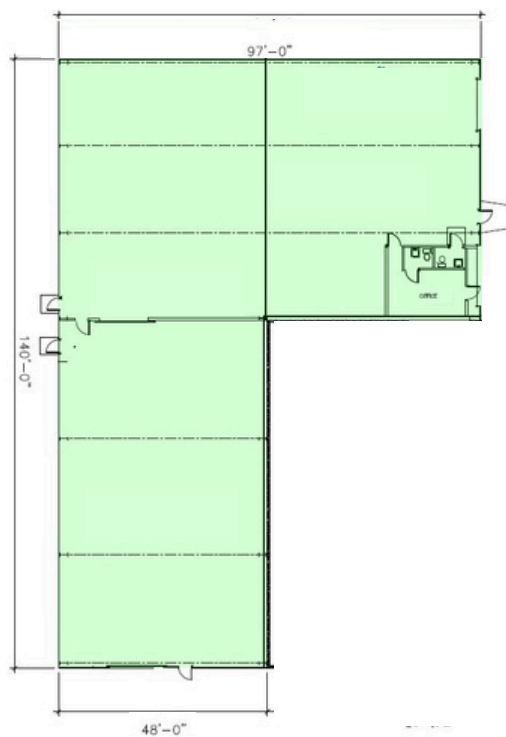
9,741 SF

Space Highlights

- 9,741 SF Available
 - +/- 250 SF Temperature Controlled Office Space
- 17'-19' clear height
- Three (3) 14'x12' Grade Level Doors
- Fenced Property
- Multiple Access Points
- 220v and 480v Electrical Service
- Electrical Drops Throughout Office and Warehouse



Floorplan- 9,741 SF Available



Building Photos

