



Keegan & Coppin
COMPANY, INC.

FOR LEASE

525 PORTAL STREET
COTATI, CA

INDUSTRIAL BUILDING
FREE RENT PROMOTION



Go beyond broker.

PRESENTED BY:

MIKE FLITNER, PARTNER
LIC # 00840890 (707) 528-1400, EXT. 235
MFLITNER@KEEGANCOPPIN.COM



PROPERTY DETAILS



525 PORTAL STREET
COTATI, CA

INDUSTRIAL BUILDING FOR LEASE

PROPERTY HIGHLIGHTS

The building is a single-story wood frame industrial building on a corner lot. The building features approximately 4,000+/- sf of office / showroom area, 13,602+/- sf warehouse area, 1 dock high loading door, three grade-level roll-up doors, sprinklered and insulated warehouse ceiling, 18+/-' maximum clear height and a 600 amp three phase electrical panel.

- Building Features: 1 dock high loading door, 3 grade-level roll-up doors, sprinklered & insulated warehouse, 18'+/- clear height
- Corner Parcel at Portal & Aaron Streets in the RC Business Park in Cotati with easy Hwy 101 Access

Business Park

RC Business Park

Rentable Space

17,602+/- SF

Parking

34 On-site Parking Spaces

Zoning

IG - General Industrial

PROPERTY INFORMATION

Lease Rate

~~\$1.05~~ **\$0.99** per sq ft Gross

1ST 3 MONTHS RENT FREE

Lease Term

3-10 Years



PRESENTED BY:

MIKE FLITNER, PARTNER
KEEGAN & COPPIN CO., INC.
LIC # 00840890 (707) 528-1400, EXT. 235
MFLITNER@KEEGANCOPPIN.COM



AREA DESCRIPTION

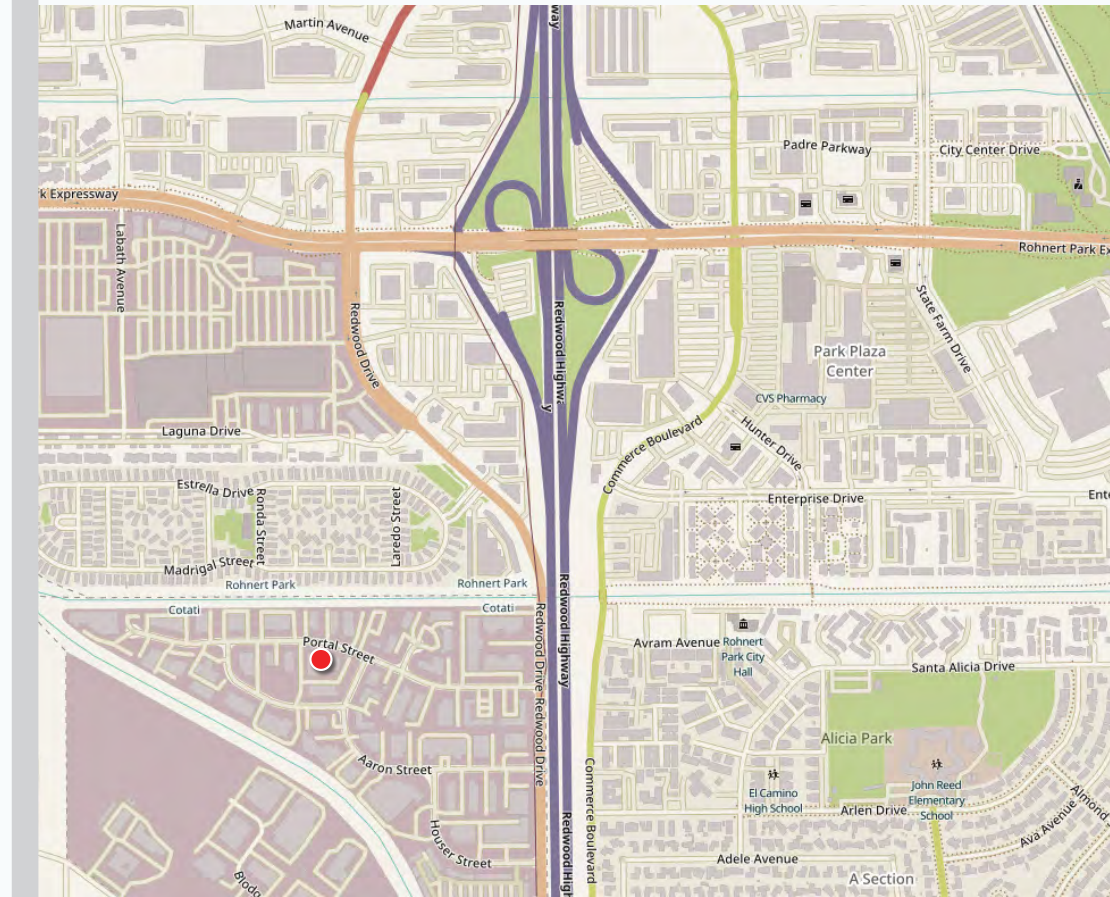


525 PORTAL STREET
COTATI, CA

**INDUSTRIAL BUILDING
FOR LEASE**

DESCRIPTION OF AREA

The building is located at the prime corner of Portal and Aaron Streets in the RC Business Park in Cotati. Easy Highway 101 access via Redwood Drive to either the Rohnert Park Expressway or to the Highway 116 interchange. A multitude of light industrial uses exist in the park.



PRESENTED BY:

**MIKE FLITNER, PARTNER
KEEGAN & COPPIN CO., INC.
LIC # 00840890 (707) 528-1400, EXT. 235
MFLITNER@KEEGANCOPPIN.COM**

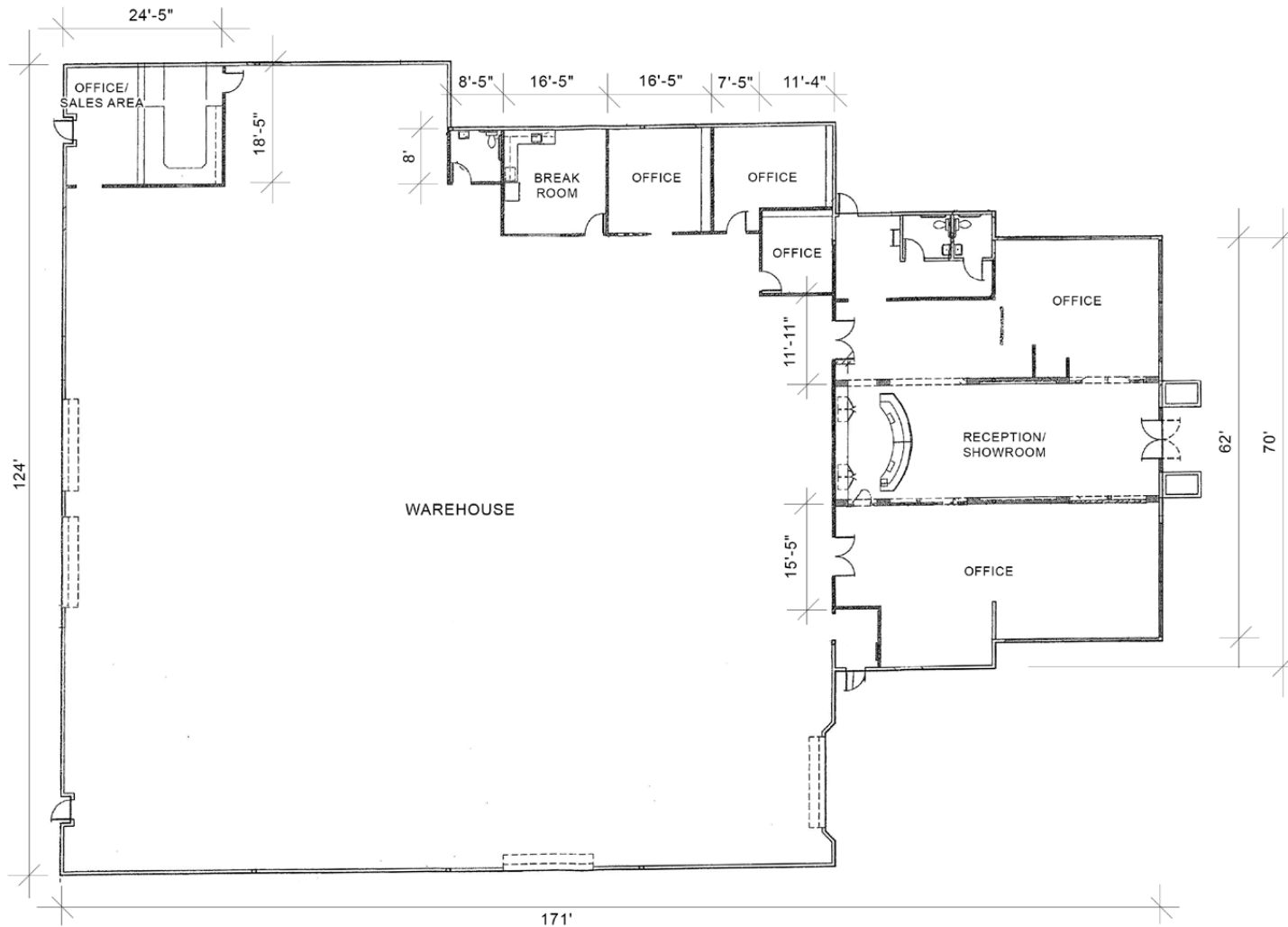


FLOOR PLAN



525 PORTAL STREET
COTATI, CA

**INDUSTRIAL BUILDING
FOR LEASE**



PRESENTED BY: MIKE FLITNER, PARTNER
KEEGAN & COPPIN CO., INC.
LIC # 00840890 (707) 528-1400, EXT. 235
MFLITNER@KEEGANCOPPIN.COM

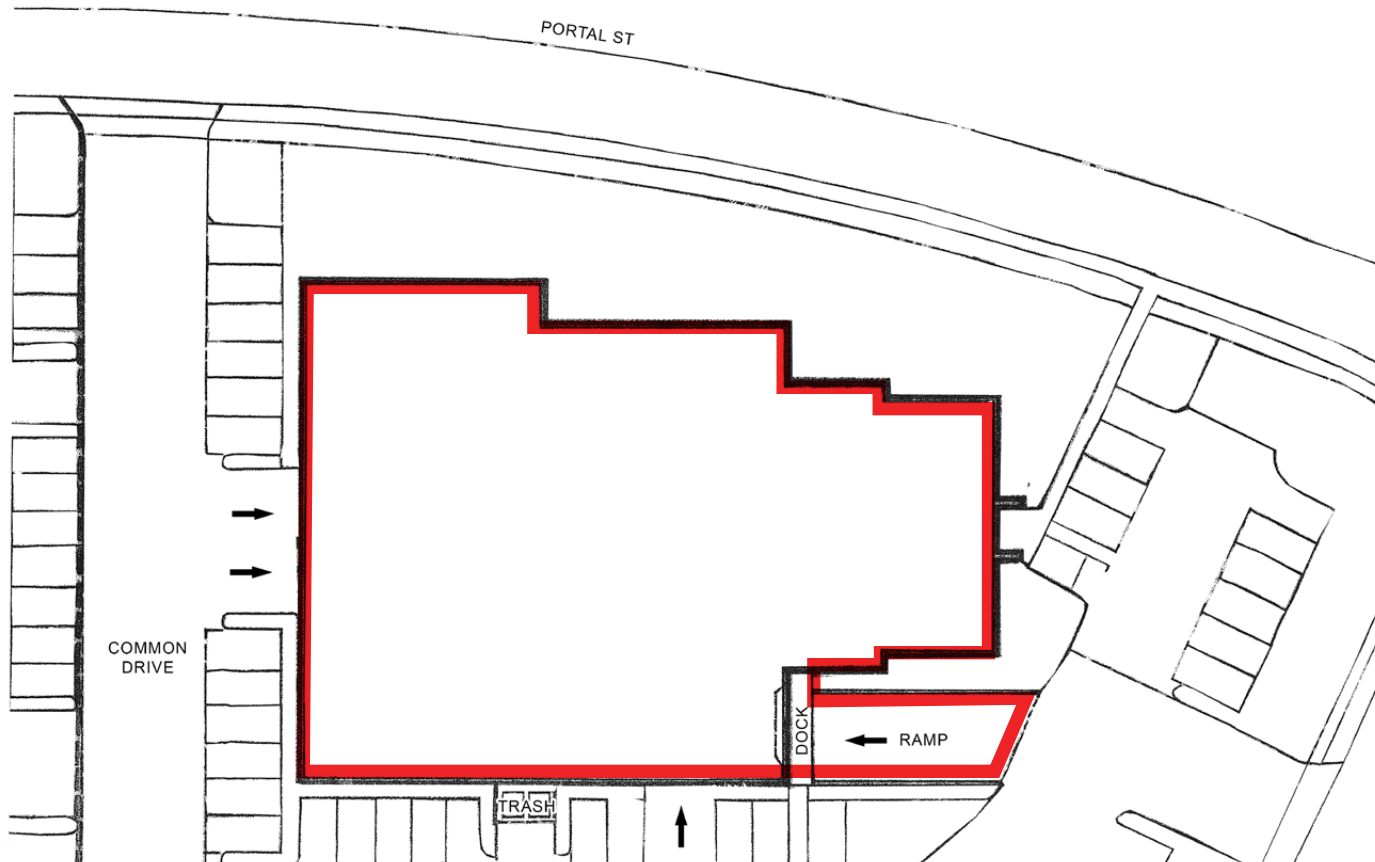


SITE PLAN



525 PORTAL STREET
COTATI, CA

**INDUSTRIAL BUILDING
FOR LEASE**



PRESENTED BY:

**MIKE FLITNER, PARTNER
KEEGAN & COPPIN CO., INC.
LIC # 00840890 (707) 528-1400, EXT. 235
MFLITNER@KEEGANCOPPIN.COM**



PROPERTY PHOTOS



525 PORTAL STREET
COTATI, CA

**INDUSTRIAL BUILDING
FOR LEASE**



PRESENTED BY: MIKE FLITNER, PARTNER
KEEGAN & COPPIN CO., INC.
LIC # 00840890 (707) 528-1400, EXT. 235
MFLITNER@KEEGANCOPPIN.COM

The above information, while not guaranteed, has been secured from sources we believe to be reliable. Submitted subject to error, change or withdrawal. An interested party should verify the status of the property and the information herein.

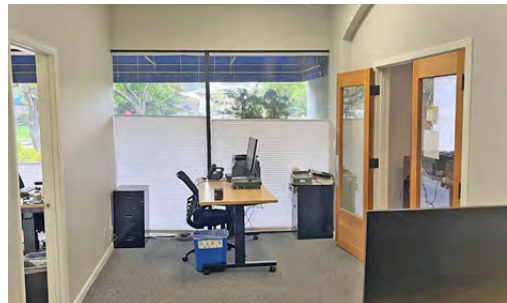
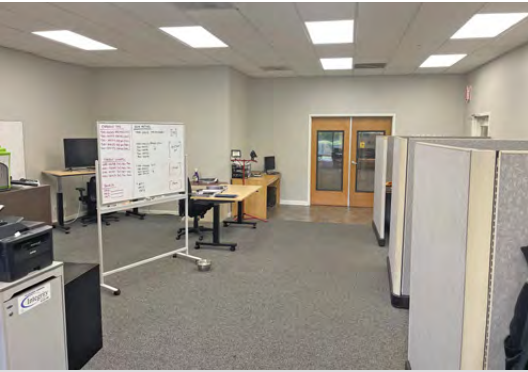


PROPERTY PHOTOS



525 PORTAL STREET
COTATI, CA

**INDUSTRIAL BUILDING
FOR LEASE**



PRESENTED BY: MIKE FLITNER, PARTNER
KEEGAN & COPPIN CO., INC.
LIC # 00840890 (707) 528-1400, EXT. 235
MFLITNER@KEEGANCOPPIN.COM

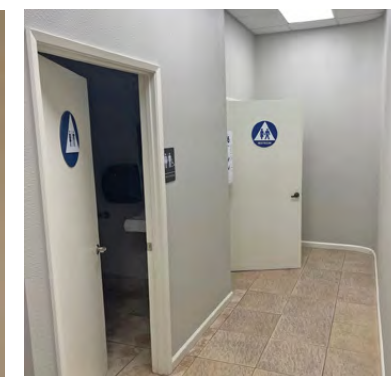
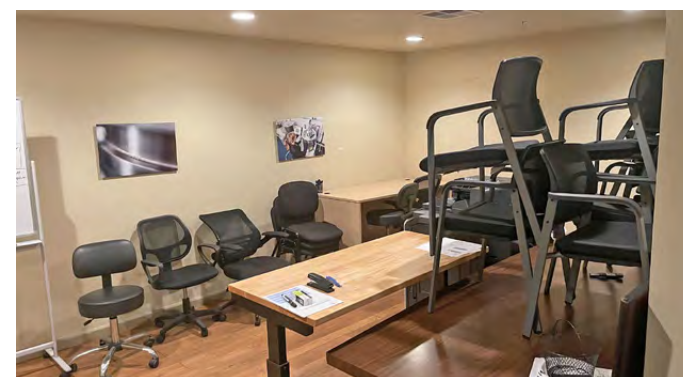
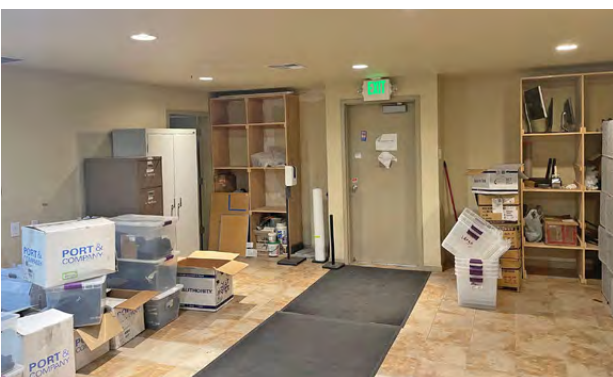


PROPERTY PHOTOS



525 PORTAL STREET
COTATI, CA

**INDUSTRIAL BUILDING
FOR LEASE**



PRESENTED BY: MIKE FLITNER, PARTNER
KEEGAN & COPPIN CO., INC.
LIC # 00840890 (707) 528-1400, EXT. 235
MFLITNER@KEEGANCOPPIN.COM

The above information, while not guaranteed, has been secured from sources we believe to be reliable. Submitted subject to error, change or withdrawal. An interested party should verify the status of the property and the information herein.



LOCATION MAP



525 PORTAL STREET
COTATI, CA

**INDUSTRIAL BUILDING
FOR LEASE**



Keegan & Coppin Co., Inc.
1355 North Dutton Avenue
Santa Rosa, CA 95401
www.keegancoppin.com
(707) 528-1400

The above information, while not guaranteed, has been secured from sources we believe to be reliable. Submitted subject to error, change or withdrawal. An interested party should verify the status of the property and the information herein.

REPRESENTED BY:

MIKE FLITNER, PARTNER
LIC # 00840890 (707) 528-1400, EXT. 235
MFLITNER@KEEGANCOPPIN.COM