

# DIERBERGS CRESTWOOD CROSSING



A  Development

For More Information Contact:



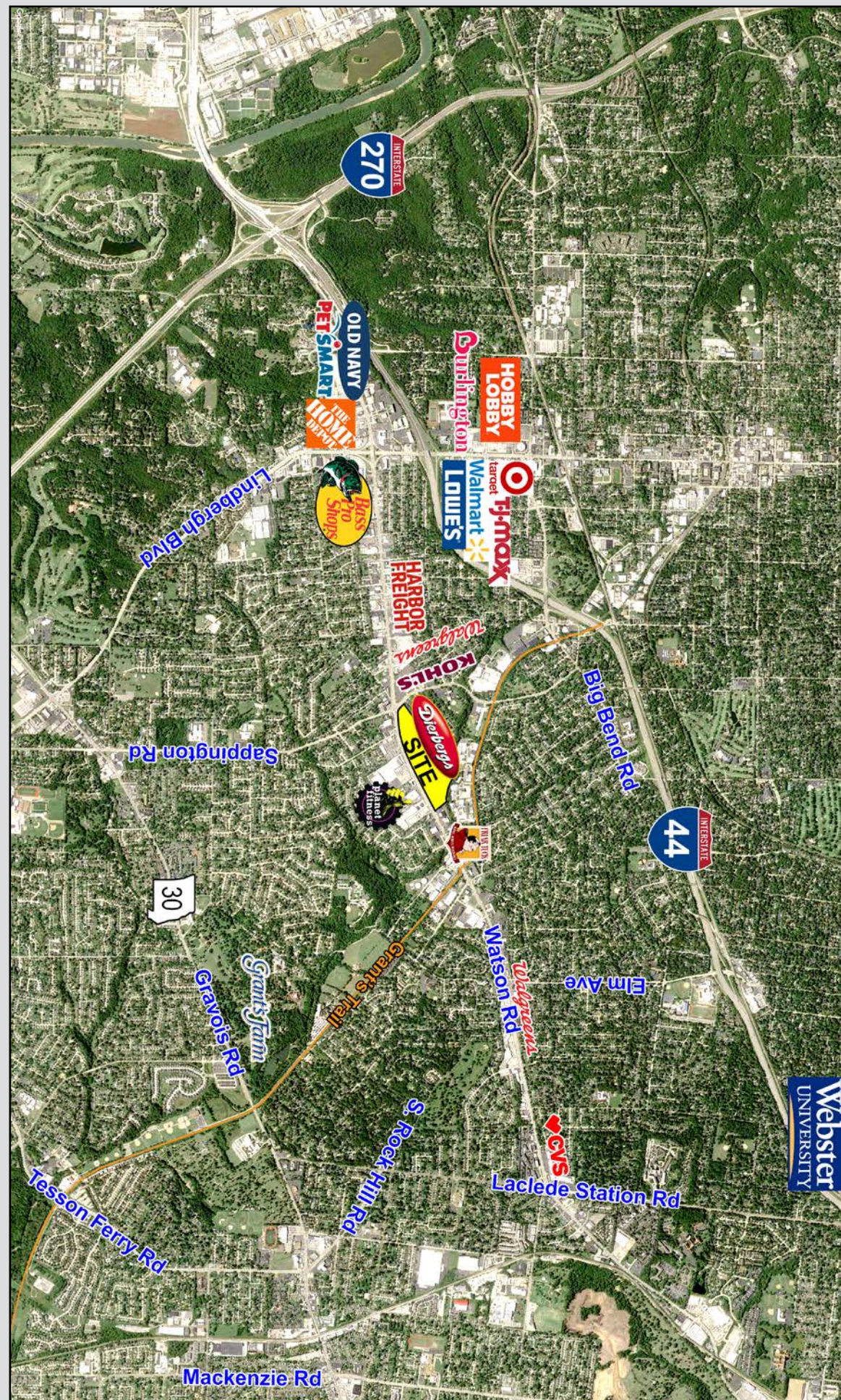
**Weller Meyer**

314-492-5007

wmeyer@caplaco.com

11850 Studt Avenue  
St. Louis, Missouri 63141

[www.caplaco.com](http://www.caplaco.com)



11850 Studt Avenue  
P.O. Box 419121  
St. Louis, Missouri 63141  
Telephone: (314)991-8900

The information contained herein was obtained from sources deemed reliable, however, Capitol Realty Group makes no guarantees as to the completeness or accuracy thereof. This information is subject to error, omission, change in price or conditions, prior sale or lease, or withdrawal without notice.

DEMOGRAPHICS	1 Mile	3 Mile	5 Mile
2025 Estimated Population	10,287	89,086	214,710
2025 Estimated Households	4,333	37,460	92,636
2025 Avg. Household Income	\$147,219	\$141,156	\$133,121



Weller Meyer  
314-492-5007  
wmeyer@caplaco.com



11850 Studt Avenue  
Saint Louis, MO 63141  
314-991-8900 Phone  
314-991-2474 Fax

Space	Tenant	Size (sf)	Space	Tenant	Size (sf)
1	Hometown Veterinary Partners	3,154	8	Eye See Vision Center	2,220
2	Arch City Mattress Co.	3,200	9	Club Pilates	2,000
3	SOHO Nail Salon	3,200	10	The Brass Tap	3,234
4	Crumbl Cookies	1,600	11	Andy's Frozen Custard	2,499
5	Roosters Men's Grooming	1,813	12	Available (Divisible)	5,109
6	Dierbergs	72,528	13	Panera Bread	2,435
7	Mercy-GoHealth Urgent Care	2,755	14	Retail Available	2,565



The information contained herein was obtained from sources deemed reliable, however, Capitol Realty Group makes no guarantees as to the completeness or accuracy thereof. This information is subject to error, omission, change in price or conditions, prior sale or lease, or withdrawal without notice.

Updated 06/24/2026