

THE MARKETPLACE AT CALIMESA

CALIMESA, CALIFORNIA 92223

Stater Bros. Anchored Shopping Center
Shops Available



LEE & ASSOCIATES
COMMERCIAL REAL ESTATE SERVICES
Lewis Retail Centers

JEFF STANLEY
951.276.3612
DRE# 01016436
jstanley@leeriverside.com

SRS
Real Estate Partners

NICK WIRICK
951.669.1002
DRE# 01304661
nick.wirick@srsre.com

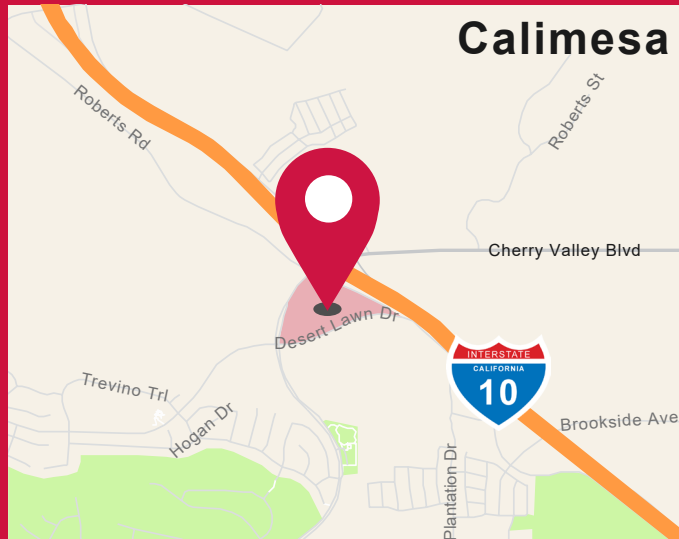
MIRANDA MONTGOMERY
951.669.1004
DRE# 02087985
miranda.montgomery@srsre.com

No warranty or representation has been made to the accuracy of the foregoing information. Terms of sale or lease and availability are subject to change or withdrawal without notice.
Lee & Associates Commercial Real Estate Services, Inc. - Riverside. 3240 Mission Inn Avenue - Riverside, CA 92507 | Corporate DRE# 01048055

OVERVIEW

- ±1,260 - ±8,149 SF of shop space available
- Average annual household income in excess of \$110,012
- Freeway visibility with traffic counts exceeding 112,173 cars per day on the Interstate 10
- Lack of competition gives a tenant the opportunity to service the trade area unencumbered by competitors

NEWLY COMPLETED!



5 MILE DEMOGRAPHICS



ESTIMATED POPULATION

92,805

AVERAGE HOUSEHOLD INCOME

\$110,012



ADJUSTED DAYTIME DEMOGRAPHICS

53,306

RECENTLY BUILT & PLANNED HOMES

14,242 UNITS



TRAFFIC COUNTS @ I-10 FWY

112,173 CPD

JOIN:

STATER BROS.
markets



LEE & ASSOCIATES
COMMERCIAL REAL ESTATE SERVICES

Lewis Retail Centers

THE MARKETPLACE AT CALIMESA - Calimesa, California 92223

02

No warranty or representation has been made to the accuracy of the foregoing information. Terms of sale or lease and availability are subject to change or withdrawal without notice. Lee & Associates Commercial Real Estate Services, Inc. - Riverside. 3240 Mission Inn Avenue - Riverside, CA 92507 | Corporate DRE# 01048055

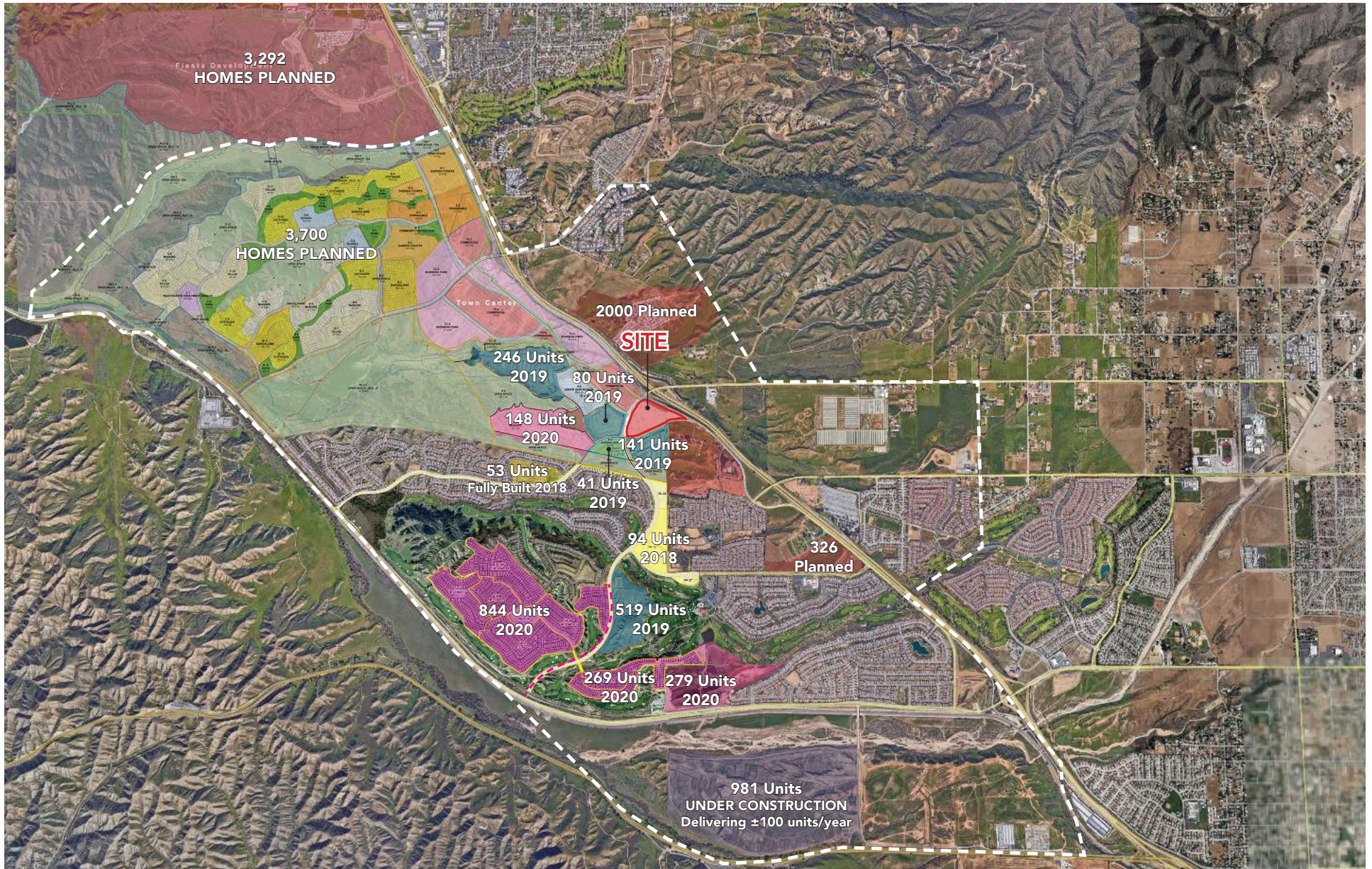
SITE PLAN



AVAILABILITIES

| SUITE | SF |
|---------|-----------------|
| SHOPS 5 | ±1,260 - ±8,149 |

HOUSING OVERVIEW



EMPLOYEE DEMOS & TRAFFIC PATTERNS

