



PREMIER
COMMERCIAL
PROPERTIES

FOR LEASE



Industrial for Lease

18750 Ulysses St. NE
East Bethel, MN 55011

AVAILABLE SPACE

- New Construction – Build to Suit
- Great access to Hwy 65
- Currently Pre-Leasing
- Estimated completion 2026
- 15,256 SF divisible to 7,766 RSF
- 4 – Dock doors
- 2 – Drive in doors
- Ability to split into two spaces
- Office space BTS
- 20' Clear Height
- I – Light Industrial Zoning



PROPERTY DETAILS:
Lease Rates: Negotiable

NEW CONSTRUCTION
15,834 Total SF or BTS

FOR MORE INFORMATION, CONTACT

Richard Lee

612-718-9919

richlee@premiercommercialproperties.com



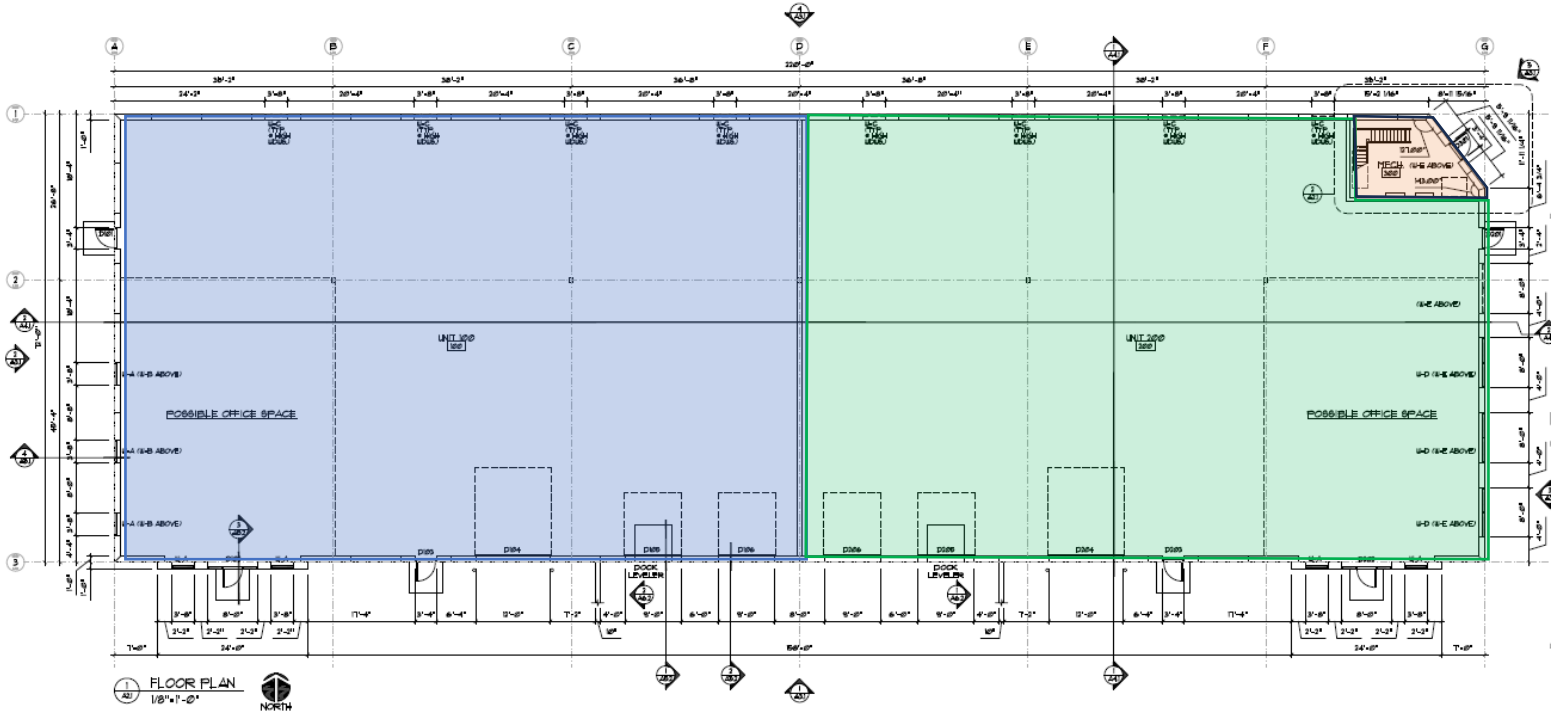
PREMIER
COMMERCIAL
PROPERTIES

FOR LEASE

CONTACT: Richard Lee

MOBILE: 612-718-9919

EMAIL: richlee@premiercommercialproperties.com



PERSPECTIVE ELEVATION
NOT TO SCALE





PREMIER
COMMERCIAL
PROPERTIES

FOR LEASE

CONTACT: Richard Lee

MOBILE: 612-718-9919

EMAIL: richlee@premiercommercialproperties.com

