



# SKELLY BUILDING ON THE COUNTRY CLUB PLAZA

Kansas City's High End Retail, Restaurant, Hotel, Office, and Entertainment District - World Famous Since 1922



## PRIME OFFICE SPACES FOR LEASE | \$25/SF FULL SERVICE

### DEMOGRAPHICS

	1 mile	3 miles	5 miles
Estimated Population	20,975	121,404	277,480
Avg. Household Income	\$127,474	\$120,122	\$105,051

- 5,321 SF former Law Office available for lease - Class A build-out (1 large conference room, 4 large offices, 1 very large presidential office, 6 permanent cubicles, 2 huge storage areas, 1 large meeting/war room, 1 large break room, and a large server room)
- Up to 7,875 SF of 2nd floor office space (5,321 SF, 1,371 SF, and 1,183 SF suites available)
- 4,271 SF 3rd floor office space
- Class A lobby with prime 47th Street frontage
- Covered and heated parking garage
- [Click Here To View 1,474 SF Space Virtual Tour](#)
- [Click Here To View 5,321 SF Space Virtual Tour](#)



CLICK HERE TO VIEW MORE LISTING INFORMATION

For More Information Contact:

Exclusive Agents

DAVID BLOCK | 816.412.7400 | [dblock@blockandco.com](mailto:dblock@blockandco.com)

ALEX BLOCK | 816.412.7373 | [ablock@blockandco.com](mailto:ablock@blockandco.com)

MAX KOSOGLAD | 816.412.7363 | [mkosoglad@blockandco.com](mailto:mkosoglad@blockandco.com)

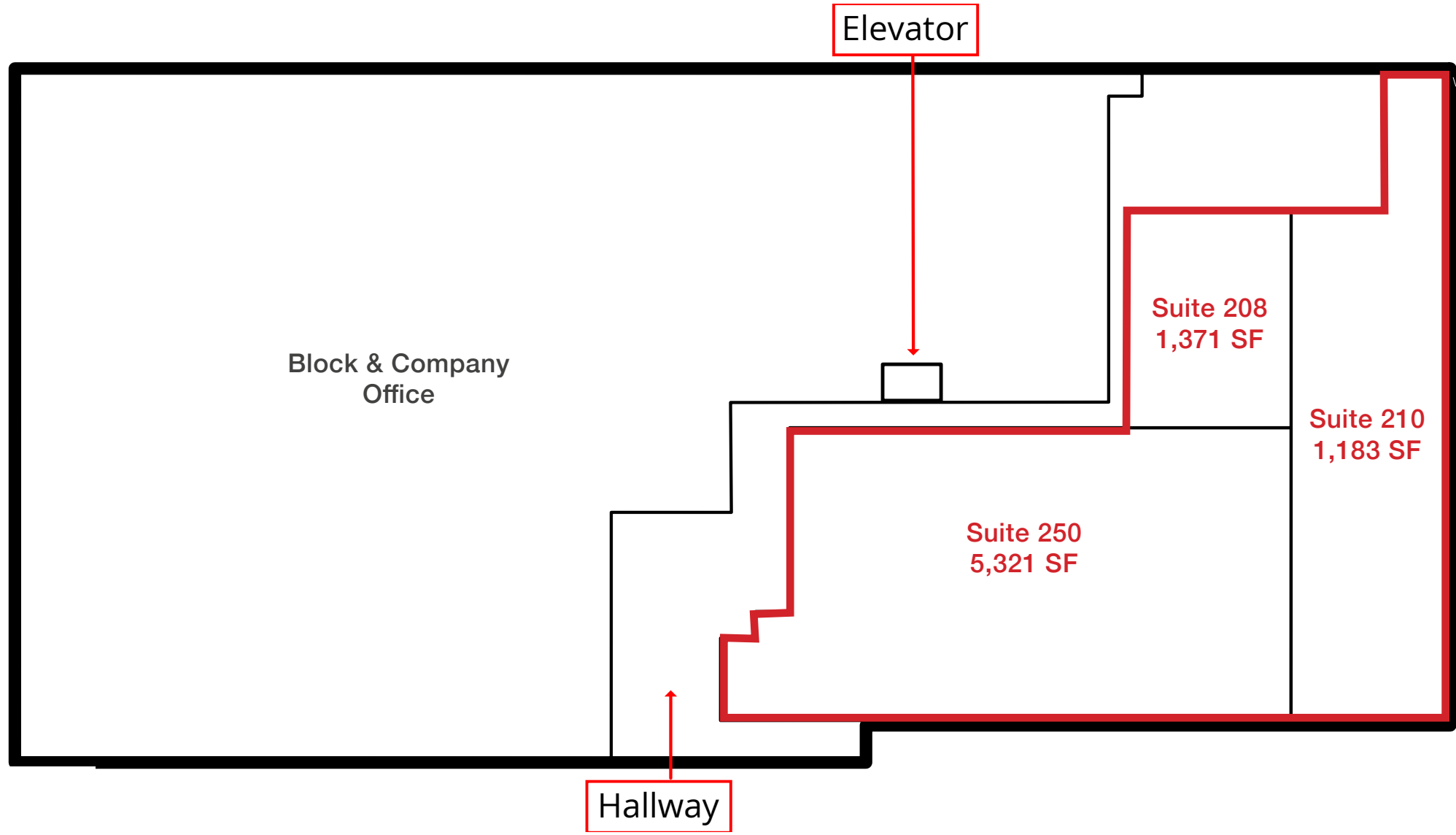




# SKELLY BUILDING ON THE COUNTRY CLUB PLAZA

Kansas City's High End Retail, Restaurant, Hotel, Office,  
and Entertainment District - World Famous Since 1922

2ND FLOOR OFFICE SPACE PLAN | UP TO 7,875 SF AVAILABLE

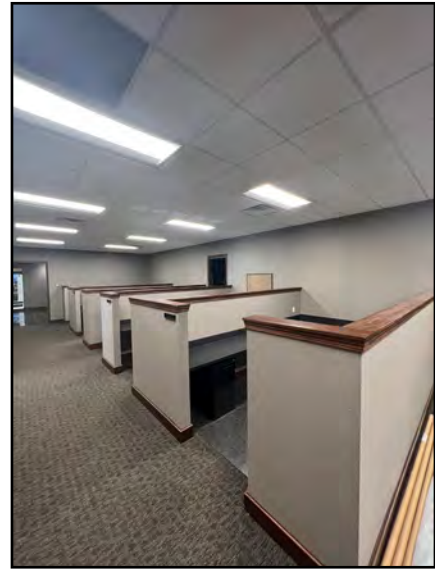
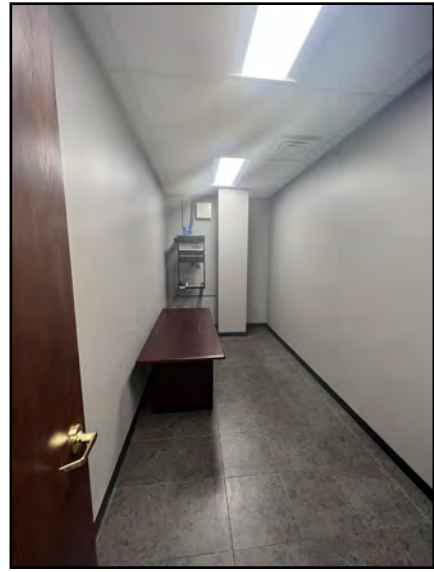
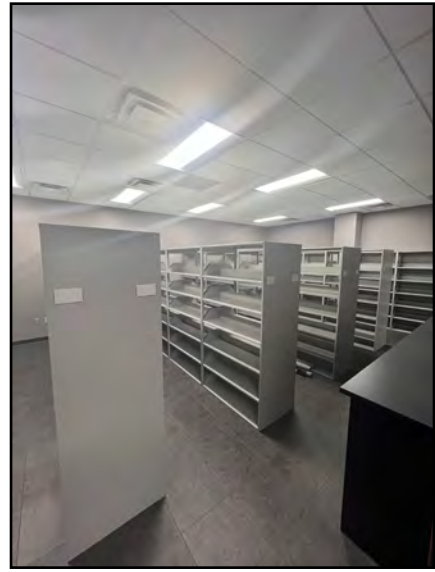
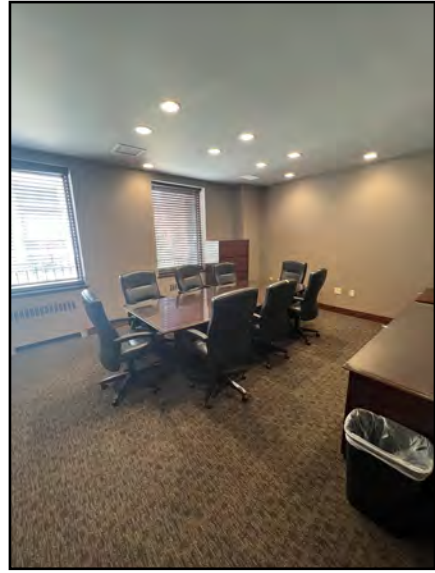
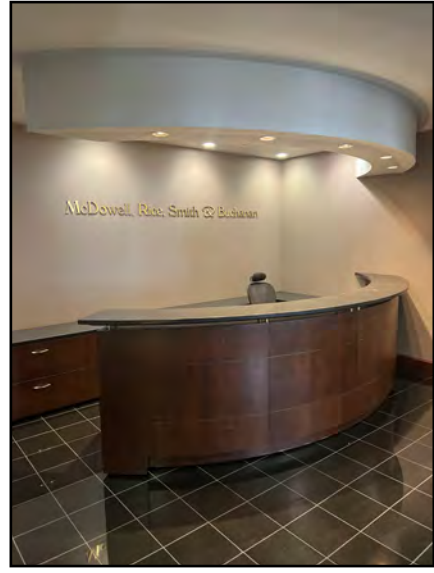
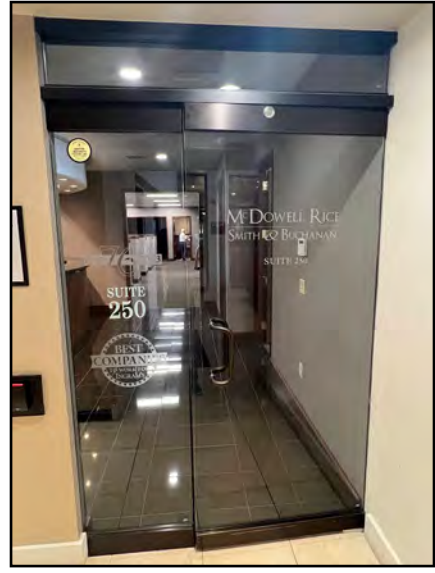




# SKELLY BUILDING ON THE COUNTRY CLUB PLAZA

Kansas City's High End Retail, Restaurant, Hotel, Office,  
and Entertainment District - World Famous Since 1922

## 2ND FLOOR OFFICE SPACE PHOTOS (5,321 SF)

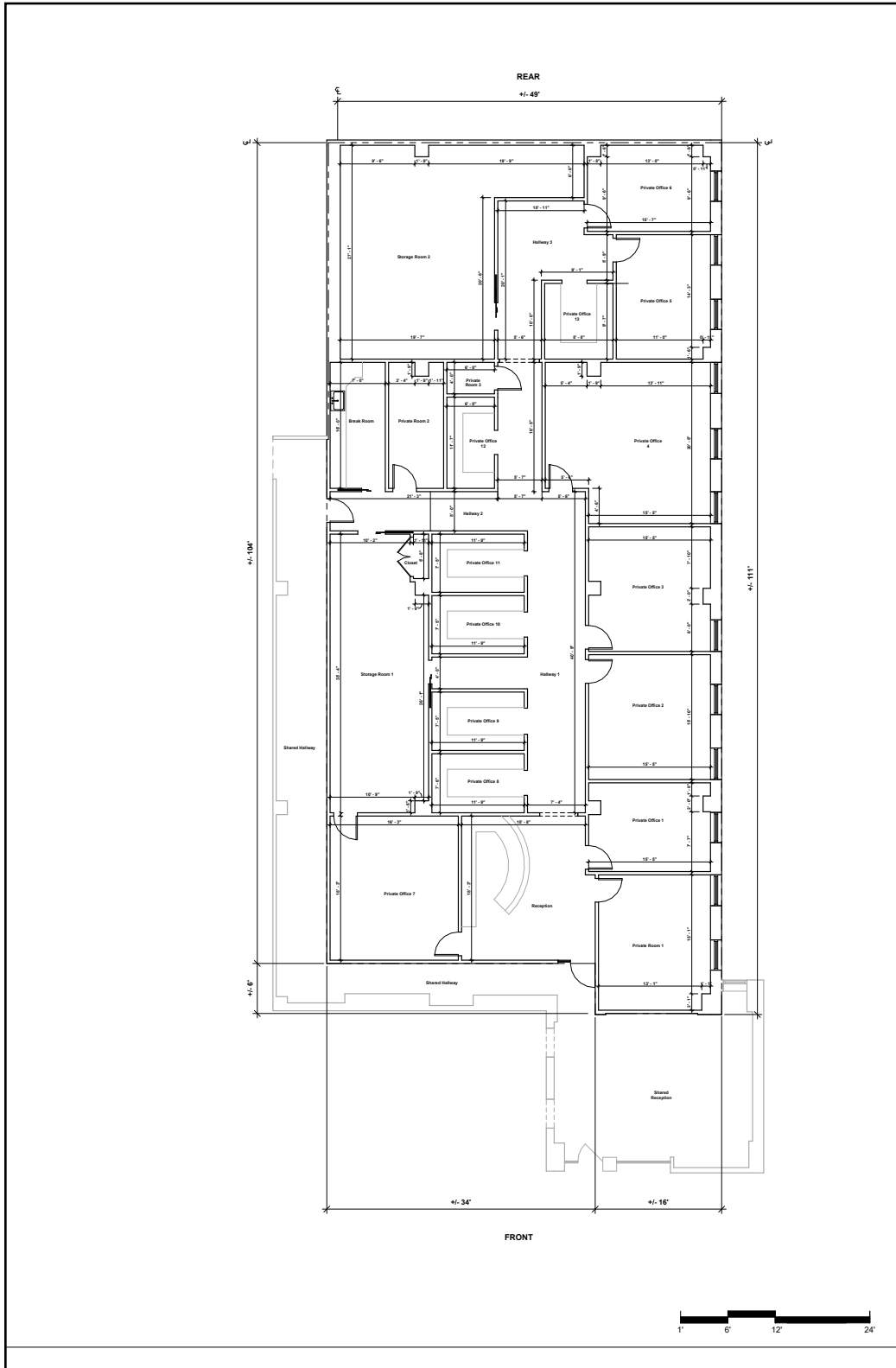




# SKELLY BUILDING ON THE COUNTRY CLUB PLAZA

Kansas City's High End Retail, Restaurant, Hotel, Office, and Entertainment District - World Famous Since 1922

## 5,321 SF OFFICE SPACE PLAN (2ND FLOOR)



**Plaza Skelly  
Group LLC**



**BLOCK & COMPANY INC.**  
REALTORS

605 W 47th Street, Suite  
200 Kansas City, MO 64112

**Unit # 250  
Ground Floor**

Gross Square footage shown was measured  
on-site and adheres to BOMA standards

**Width  
+/- 50'**

**Depth  
+/- 111'**

Revisions

**Floor Plan**  
Prepared 10/27/2023  
Unit # 250

Plans Produced by:  
**ID PLANS**

400 North Tampa St. Suite 2210  
Tampa, FL 33602  
Phone: (866) 657-2545  
idplans.com



© 2023

Floor plan is for general use and purposes only. ID Plans does not guarantee the accuracy or validity of provided information. Measurements are not intended to be architecturally valid for construction purposes or accepted as replacement for documents, drawings, or media intended or claiming to be structurally accurate, such as blueprints. The property owner has and reserves the right and responsibility to verify, change or alter the provided information at any time for any reason.

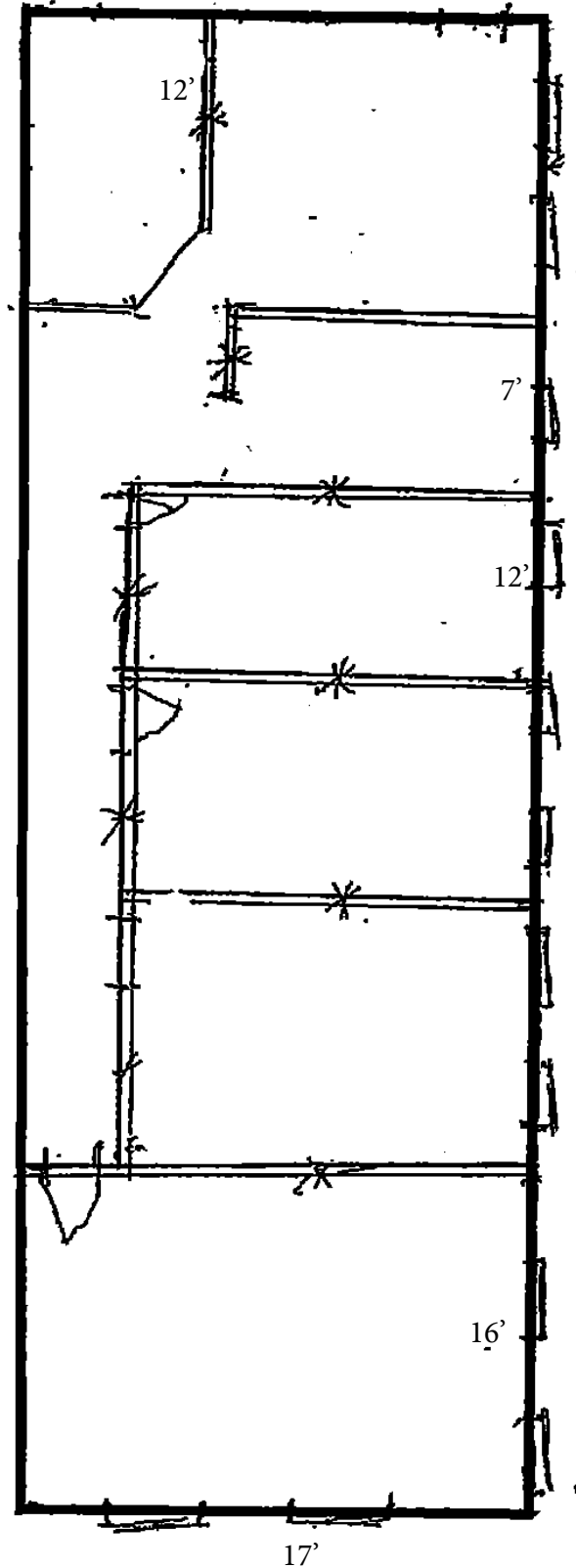




# SKELLY BUILDING ON THE COUNTRY CLUB PLAZA

Kansas City's High End Retail, Restaurant, Hotel, Office, and Entertainment District - World Famous Since 1922

## SUITE 210 OFFICE SPACE PLAN - 1,183 SF

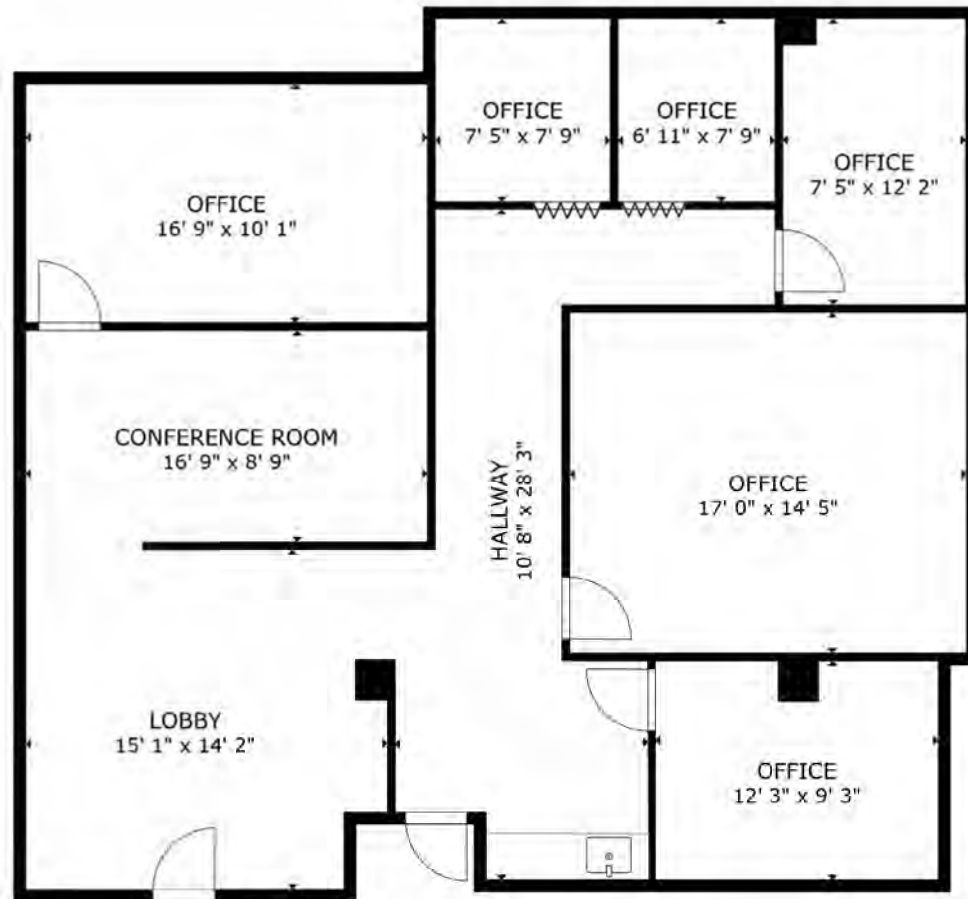




# SKELLY BUILDING ON THE COUNTRY CLUB PLAZA

Kansas City's High End Retail, Restaurant, Hotel, Office,  
and Entertainment District - World Famous Since 1922

## SUITE 208 OFFICE SPACE PLAN - 1,371 SF



FLOOR PLAN

GROSS INTERNAL AREA  
FLOOR PLAN 1,371 sq.ft.  
TOTAL : 1,371 sq.ft.

SIZES AND DIMENSIONS ARE APPROXIMATE. ACTUAL MAY VARY.

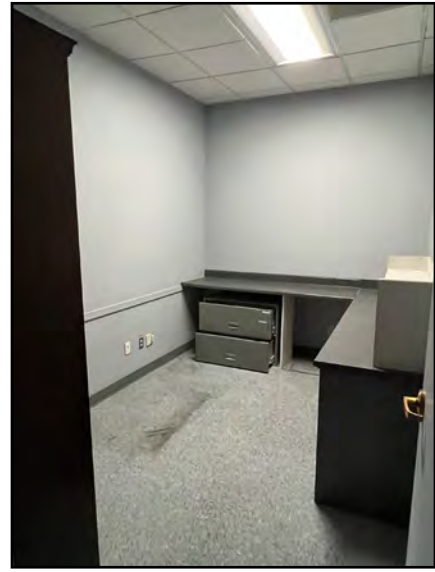
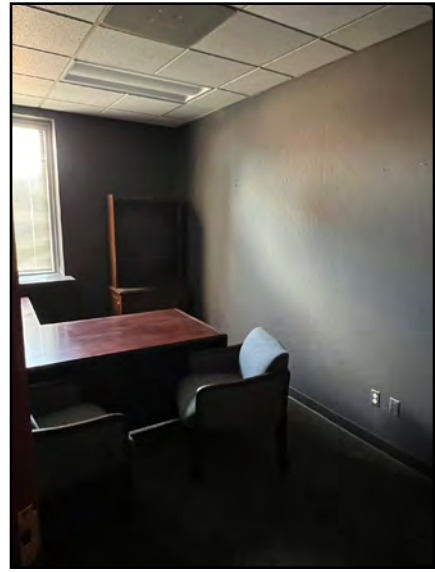
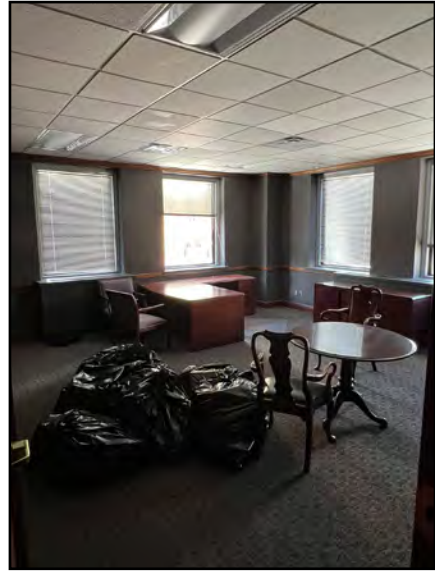
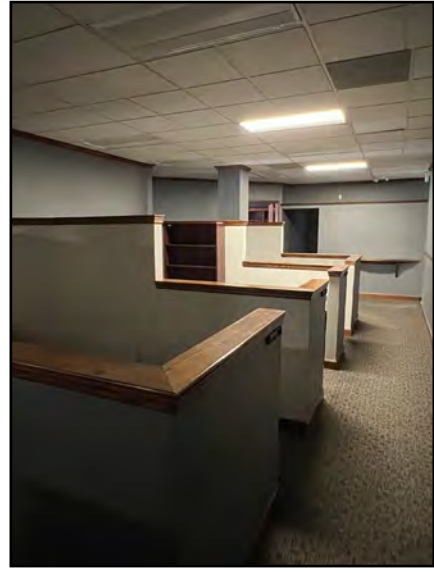
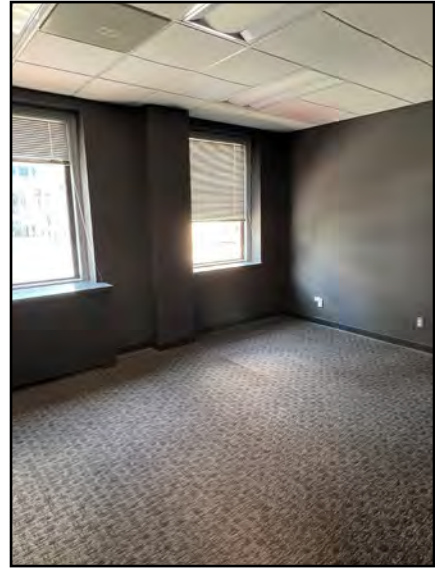




# SKELLY BUILDING ON THE COUNTRY CLUB PLAZA

Kansas City's High End Retail, Restaurant, Hotel, Office,  
and Entertainment District - World Famous Since 1922

## 3ND FLOOR OFFICE SPACE PHOTOS (4,217 SF)

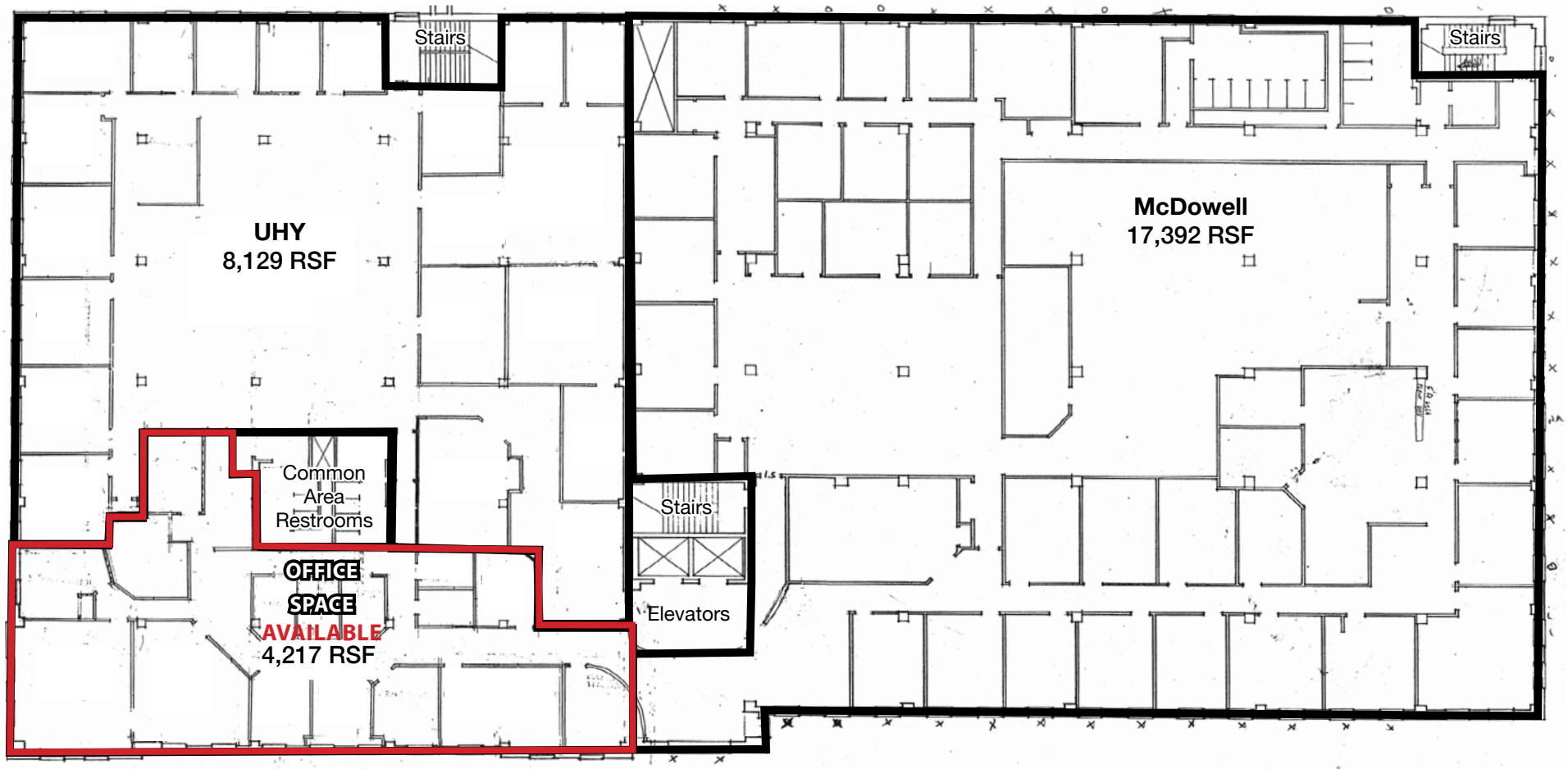




# SKELLY BUILDING ON THE COUNTRY CLUB PLAZA

Kansas City's High End Retail, Restaurant, Hotel, Office,  
and Entertainment District - World Famous Since 1922

## OFFICE SPACE PLAN (3RD FLOOR)



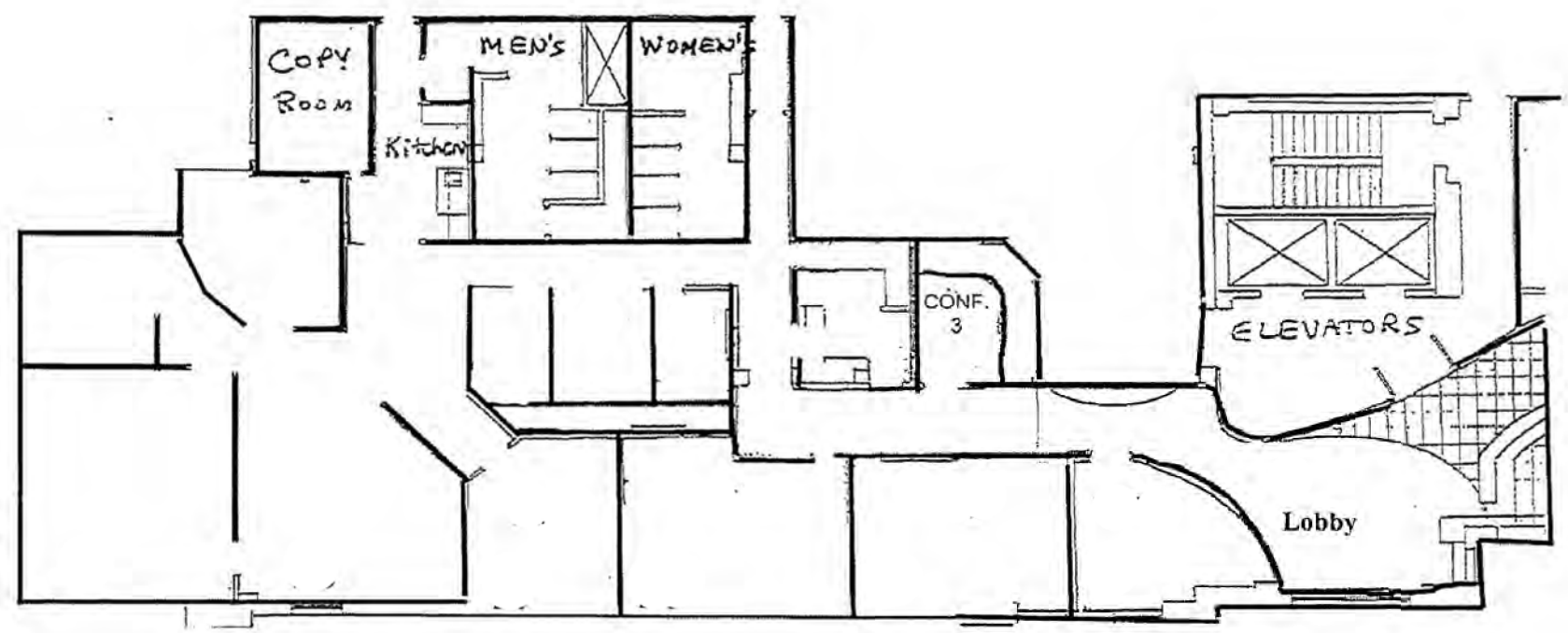
3RD FLOOR PLAN  
1/8" = 1'-0"





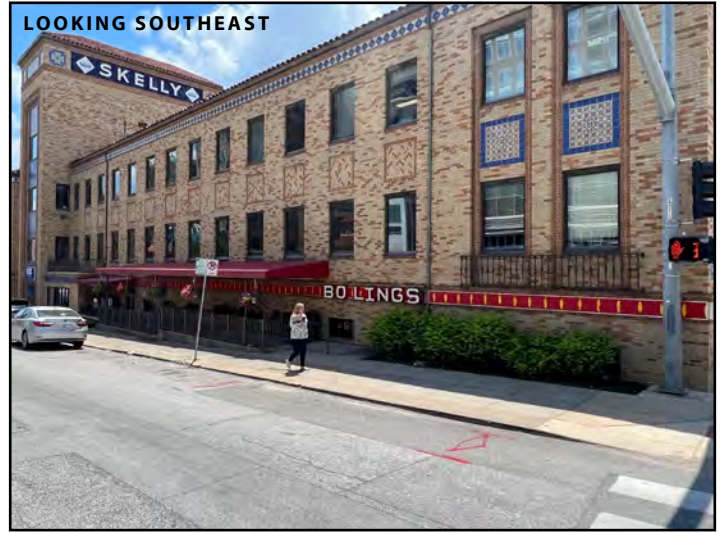
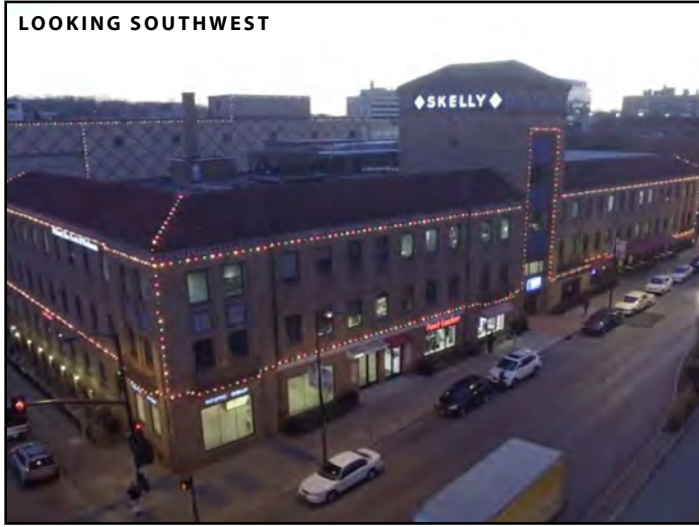
**SKELLY BUILDING ON THE COUNTRY CLUB PLAZA**  
 Kansas City's High End Retail, Restaurant, Hotel, Office,  
 and Entertainment District - World Famous Since 1922

**4,217 SF OFFICE SPACE PLAN**



All information furnished regarding property for sale or lease is from sources deemed reliable, but no warranty or representation is made as to the accuracy thereof and the same is subject to errors, omissions, changes of prices, rental or other conditions, prior sale or lease or withdrawal without notice.

## EXTERIOR PHOTOS





# SKELLY BUILDING ON THE COUNTRY CLUB PLAZA

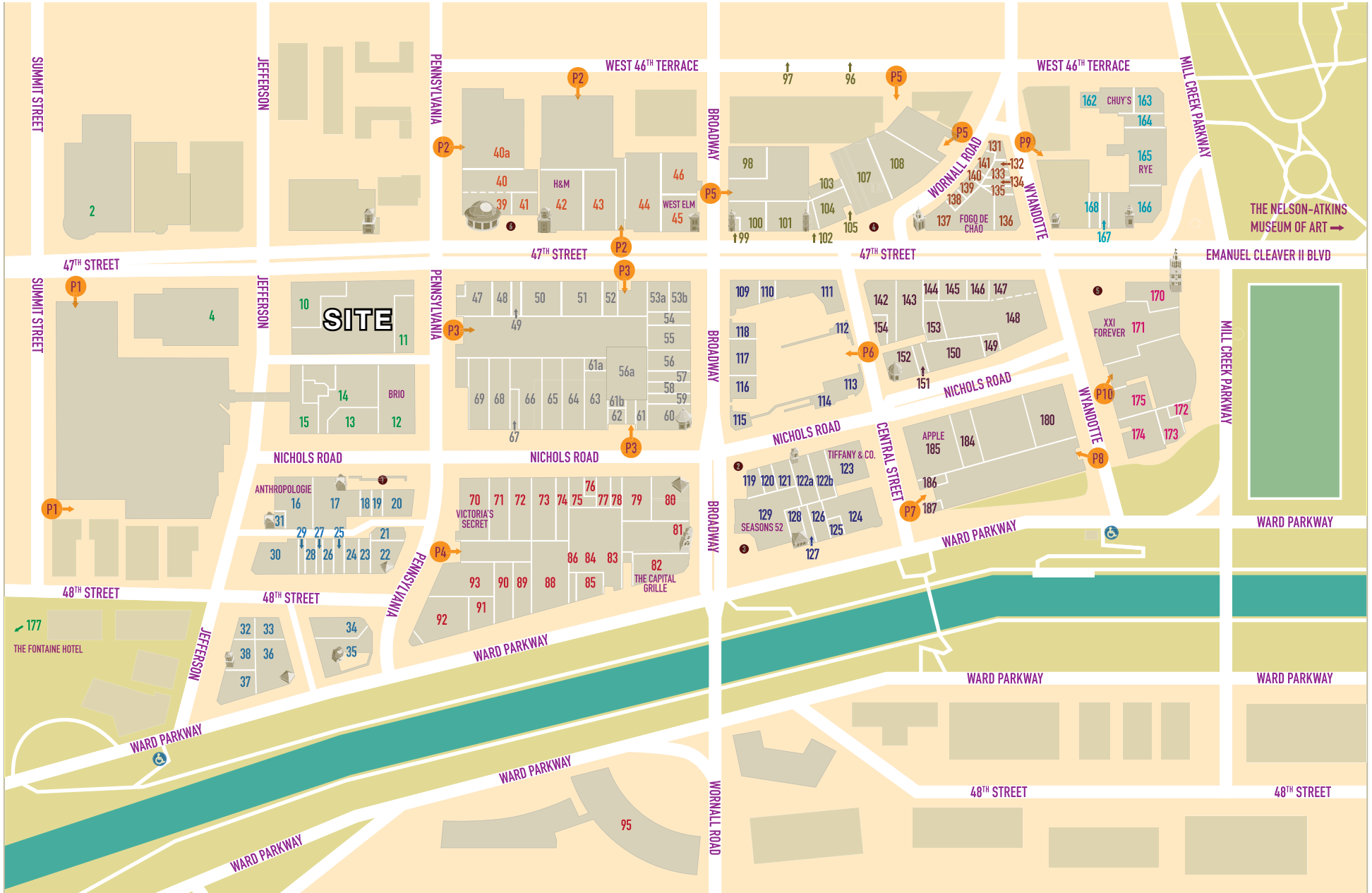
Kansas City's High End Retail, Restaurant, Hotel, Office, and Entertainment District - World Famous Since 1922

## AERIAL PHOTOS





# COUNTRY CLUB PLAZA



**NEW TO THE PLAZA**

27	Bambou Salons ◦	561-1302
154	Bruu Café ◦ x	239-3249
109	EB & Co. ◦	214-6223
63	Kindred Shops ◦	492-7287
115	Matches Boutique ◦ x	255-3159
102	Messenger – 47th Street ◦	326-8644
31	Messenger – Jefferson ◦	437-8445
151	Nickel & Suede ◦	499-8811
143	Rally House – East ◦	384-0581
124	Sterling Bank (ATM) x	627-6600

**WOMEN'S APPAREL / ACCESSORIES**

66	Altar'd State	865-6100
16	Anthropologie	531-4429
11	Athleta	753-7557
57	Chico's	931-3777
77	Eileen Fisher x	531-5566
145	Evereve	569-2253
58	Francesca's Collections	531-5141
67	Free People x	531-2669
120	kate spade new york x	756-5244
63	Kindred Shops ◦	492-7287
122a	Madewell	756-5365
115	Matches Boutique ◦ x	255-3159
119	Michael Kors x	531-2038
151	Nickel & Suede ◦	499-8811
128	Ricca Sposa Bridal x	913-709-4615
79	Soft Surroundings x	756-5040
20	Terrasi Living & Scandia Home ◦ x	753-4144
70	Victoria's Secret	531-2650
109	White House Black Market	960-0580

**MEN'S & WOMEN'S APPAREL / ACCESSORIES**

39	Banana Republic	753-1157
53a	Charlie Hustle ◦ x	541-4387
73	Express	753-7151
42	H&M	960-1030
68	Indochino x	855-334-0788
17	J.Crew	753-9744
118	J.McLaughlin x	960-3754
54	Lucky Brand Jeans x	753-5823
80	lululemon	531-2894
184	Marine Layer x	569-0276
50	Moosejaw	832-4493
43	The North Face x	931-4439
104	Old Navy	756-0300
143	Rally House – East ◦	384-0581
91	Rally House – West ◦	756-5409
101	Tommy Bahama x	531-8688
152	UNTUCKit x	216-1455
13	Urban Outfitters x	753-8500
48	Vans	531-2058
53b	vineyard vines x	800-5128
171	XXI Forever	753-7473

**ACCESSORIES / OPTICAL / LUGGAGE**

146	Brighton Collectibles x	531-8138
100	Coach	561-1771
109	EB & Co. ◦	214-6223
120	kate spade new york x	756-5244
119	Michael Kors x	531-2038
26	Milan Optique ◦ x	569-2700
74	Sunglass Hut	531-4340
57	Tumi x	753-4306
122b	Warby Parker x	298-0660

**SHOES**

59	Aldo	531-4790
39	Banana Republic	753-1157
146	Brighton Collectibles x	531-8138
120	kate spade new york x	756-5244
119	Michael Kors x	531-2038
50	Moosejaw	832-4493
131	Renner's Boots, Shoes & Repair ◦ x	561-0740
48	Vans	531-2058

**CHILDREN'S APPAREL**

53a	Charlie Hustle ◦ x	541-4387
42	H&M	960-1030
17	J.Crew Crewcuts	753-9744
43	Old Navy	931-4439
143	Rally House – East ◦	384-0581
91	Rally House – West ◦	756-5409
53b	vineyard vines x	800-5128
171	XXI Forever	753-7473

**GIFTS / SPECIALTY STORES**

144	3DHQ ◦ x	913-204-1234
185	Apple	448-9200
44	Barnes & Noble Booksellers	753-1313
72	Bath & Body Works	561-1613
88	Beauty Brands ◦	753-8822
121	Casper x	301-7431
85	Diebel's Sportsmens Gallery ◦	931-2988
55	Hallmark Gold Crown ◦	931-4555
68	Indochino x	855-334-0788
49	IT'SUGAR x	759-8666
120	kate spade new york x	756-5244
80	lululemon	531-2894
107	Made in KC Marketplace ◦	718-0806
50	Moosejaw	832-4493
151	Nickel & Suede ◦	499-8811
104	The North Face x	756-0300
33	Paper Source	753-2777
143	Rally House – East ◦	384-0581
91	Rally House – West ◦	756-5409
148	RE: Emporium ◦	913-274-8321
128	Ricca Sposa Bridal x	913-709-4615
64	Sephora	753-5996
20	Terrasi Living & Scandia Home ◦ x	753-4144

23	Three Dog Bakery ◦	753-3647
123	Tiffany & Co. x	531-7676
56	T-Mobile ◦	521-6300
45	west elm x	960-3765

**HOME / ART / ANTIQUES**

16	Anthropologie	531-4429
107	Made in KC Marketplace ◦	718-0806
148	RE: Emporium ◦	913-274-8321
79	Soft Surroundings x	756-5040
20	Terrasi Living & Scandia Home ◦ x	753-4144
13	Urban Outfitters x	753-8500
45	west elm x	960-3765

**JEWELRY**

109	EB & Co. ◦	214-6223
61	Kendra Scott	448-8323
151	Nickel & Suede ◦	499-8811
123	Tiffany & Co. x	531-7676
150	TIVOL ◦	531-5800
32	Vinca Fine Jewelry ◦ x	531-5591

**PERSONAL / PROFESSIONAL SERVICES**

21	Amazing Lash Studio	338-0340
27	Bambou Salons ◦	561-1302
88	Beauty Brands ◦	753-8822
29	Brow Threading ◦ x	913-492-4060
175	CorePower Yoga	897-0678
84	Country Club Carwash ◦ x	365-2641
61b	Country Club Plaza Public Safety	753-7973
62	Industrious x	281-8605
139	Larissa's Tailor Shop ◦ x	753-1209
163	Massage Envy	994-3689
56a	Mojo Cycling Studio ◦ x	561-1995
134	Plaza Hair Design ◦ x	753-2936
133	Plaza Nails ◦ x	701-6616
131	Renner's Boots, Shoes & Repair ◦ x	561-0740
141	Salon Sophia ◦ x	756-0024
56	T-Mobile	521-6300
4	Unity Temple	561-4466
186	The UPS Store	561-7411
122b	Warby Parker x	298-0660

**RESTAURANTS**

12	BRIO Italian Mediterranean x	561-5888
105	Buca di Beppo x	931-6548
82	The Capital Grille x	531-8345
170	The Cheesecake Factory	960-1919
162	Chuy's x	931-2783
111	Classic Cup Café ◦ x	753-1840
46	Cooper's Hawk Winery & Restaurant x	531-1500
174	Fiorella's Jack Stack Barbecue ◦	531-7427
137	Fogo de Chão x	931-7700
35	Gram & Dun ◦ x	389-2900
36	The Granfalloon Restaurant & Bar ◦ x	753-7850
89	Kona Grill x	931-5888

40	McCormick & Schmick's Seafood x	531-6800
90	The Melting Pot x	931-MELT
22	O'Dowd's Gastrobar ◦ x	561-2700
166	P.F. Chang's China Bistro x	931-9988
116	Potbelly Sandwich Shop	332-4953
165	Rye ◦	541-3382
129	Seasons 52 x	531-0052
142	Shake Shack	807-4030
92	True Food Kitchen x	931-4947
30	Zócalo Mexican Cuisine ◦ x	756-5555

**SPECIALTY FOOD & WINE**

167	Auntie Anne's / Cinnabon	216-1087
44	Barnes and Noble Café	753-1313
24	The Better Cheddar ◦	561-8204
154	Bruu Café ◦ x	239-3249
168	Cold Stone Creamery	531-8200
138	Cupcake A La Mode ◦	960-1911
49	IT'SUGAR x	759-8666
107	Made in KC Marketplace ◦	718-0806
102	Messenger – 47th Street ◦	326-8644
31	Messenger – Jefferson ◦	437-8445
113	Starbucks	753-4246
112	Topsy's Popcorn Shoppe ◦	753-7373

**FINANCIAL INSTITUTIONS**

47	Bank of America (ATM)	714-7010
61a	Country Club Bank (ATM) & Drive-thru	931-4060
124	Sterling Bank (ATM) x	627-6600

**LOCAL**

144	3DHQ ◦ x	913-204-1234
27	Bambou Salons ◦	561-1302
88	Beauty Brands ◦	239-3249
24	The Better Cheddar ◦	753-8822
154	Bruu Café ◦ x	561-8204
53a	Charlie Hustle ◦ x	541-4387
111	Classic Cup Café ◦ x	753-1840
138	Cupcake A La Mode ◦	960-1911
149	Cupcakin Bakery ◦ x	813-4880
85	Diebel's Sportsmens Gallery ◦	931-2988
109	EB & Co. ◦	214-6223
174	Fiorella's Jack Stack Barbecue ◦	531-7427
35	Gram & Dun ◦ x	389-2900
36	The Granfalloon Restaurant & Bar ◦ x	753-7850
55	Hallmark Gold Crown ◦	931-4555
63	Kindred Shops ◦	492-7287
139	Larissa's Tailor Shop ◦ x	753-1209
107	Made in KC Marketplace ◦	718-0806
115	Matches Boutique ◦ x	255-3159
102	Messenger – 47th Street ◦	326-8644
31	Messenger – Jefferson ◦	437-8445
26	Milan Optique ◦ x	569-2700
56a	Mojo Cycling Studio ◦ x	561-1995
151	Nickel & Suede ◦	499-8811
22	O'Dowd's Gastrobar ◦ x	561-2700

134	Plaza Hair Design ◦ x	753-2936
133	Plaza Nails ◦ x	701-6616
143	Rally House – East ◦	384-0581
91	Rally House – West ◦	756-5409
131	Renner's Boots, Shoes & Repair ◦ x	561-0740
148	RE: Emporium ◦	913-274-8321
128	Ricca Sposa Bridal ◦ x	913-709-4615
165	Rye ◦	541-3382
141	Salon Sophia ◦ x	756-0024
20	Terrasi Living & Scandia Home ◦ x	753-4144
23	Three Dog Bakery ◦	753-3647
150	TIVOL ◦	531-5800
56	T-Mobile	521-6300
112	Topsy's Popcorn Shoppe ◦	753-7373
32	Vinca Fine Jewelry ◦ x	531-5591
30	Zócalo Mexican Cuisine ◦ x	756-5555

**HOTELS**

177	The Fontaine Hotel x	913-8800
95	The InterContinental Hotel x	756-1500
97	Residence Inn by Marriott	753-0033
2	Sheraton Suites	931-4400

**COURTYARDS**

1	Penguin	4	Neptune
2	Mermaid	5	Chandler
3	Pomona	6	Valencia

**PARKING**

1	Seville Garage	2b	Plaza Central Garage
2	Valencia Place Garage	3	Plaza 211 West Garage
3	Granada Garage	4	Plaza 211 East Garage
4	Time Garage	5	Mill Creek Garage
5	Balcony Garage	6	Giralda Garage

**MISCELLANEOUS**

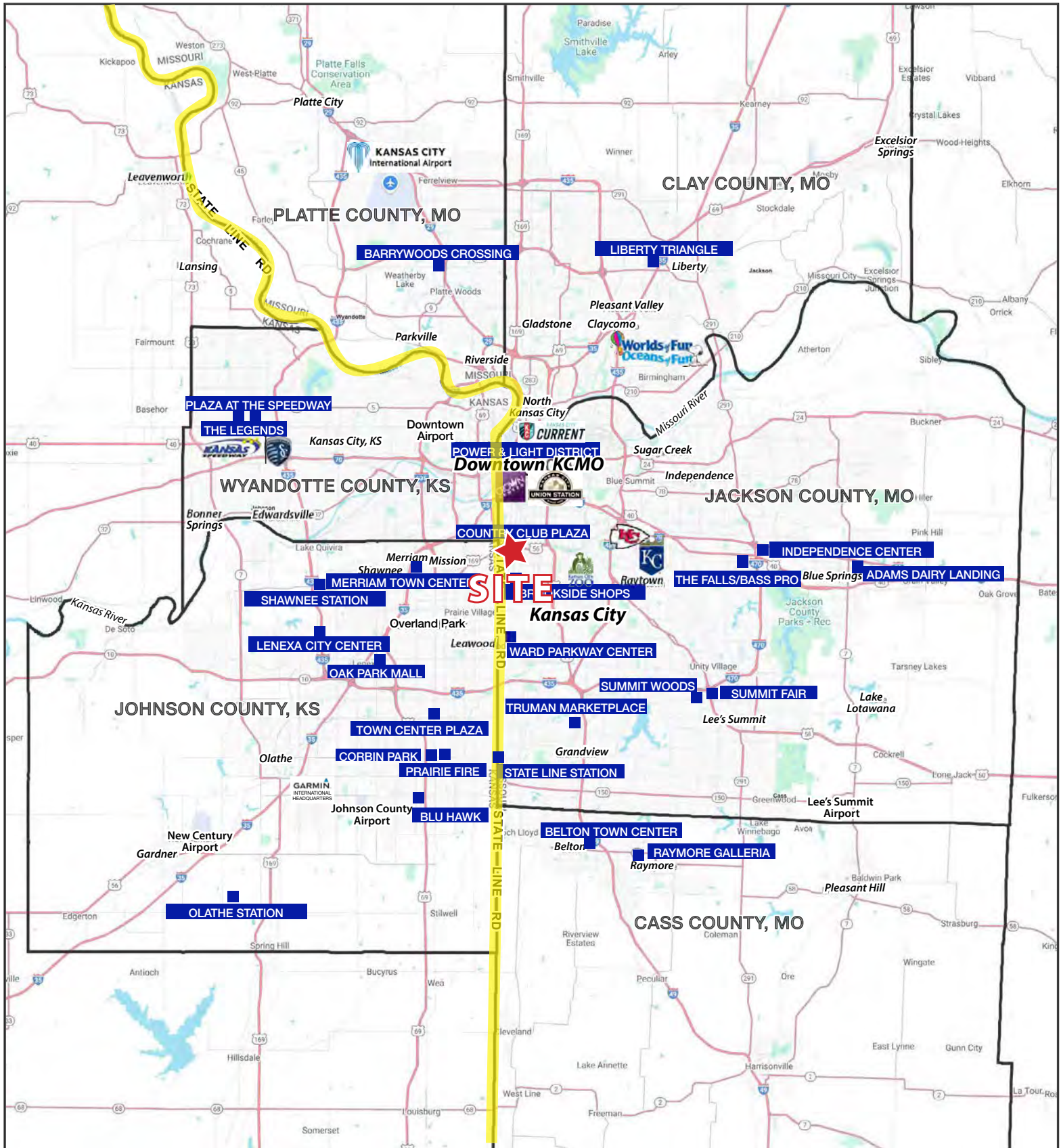
- ♿ Brush Stroke Handicapped Access
- Kansas City Original
- x Exclusive to the Plaza

All area codes are (816) unless noted otherwise.



# SKELLY BUILDING ON THE COUNTRY CLUB PLAZA

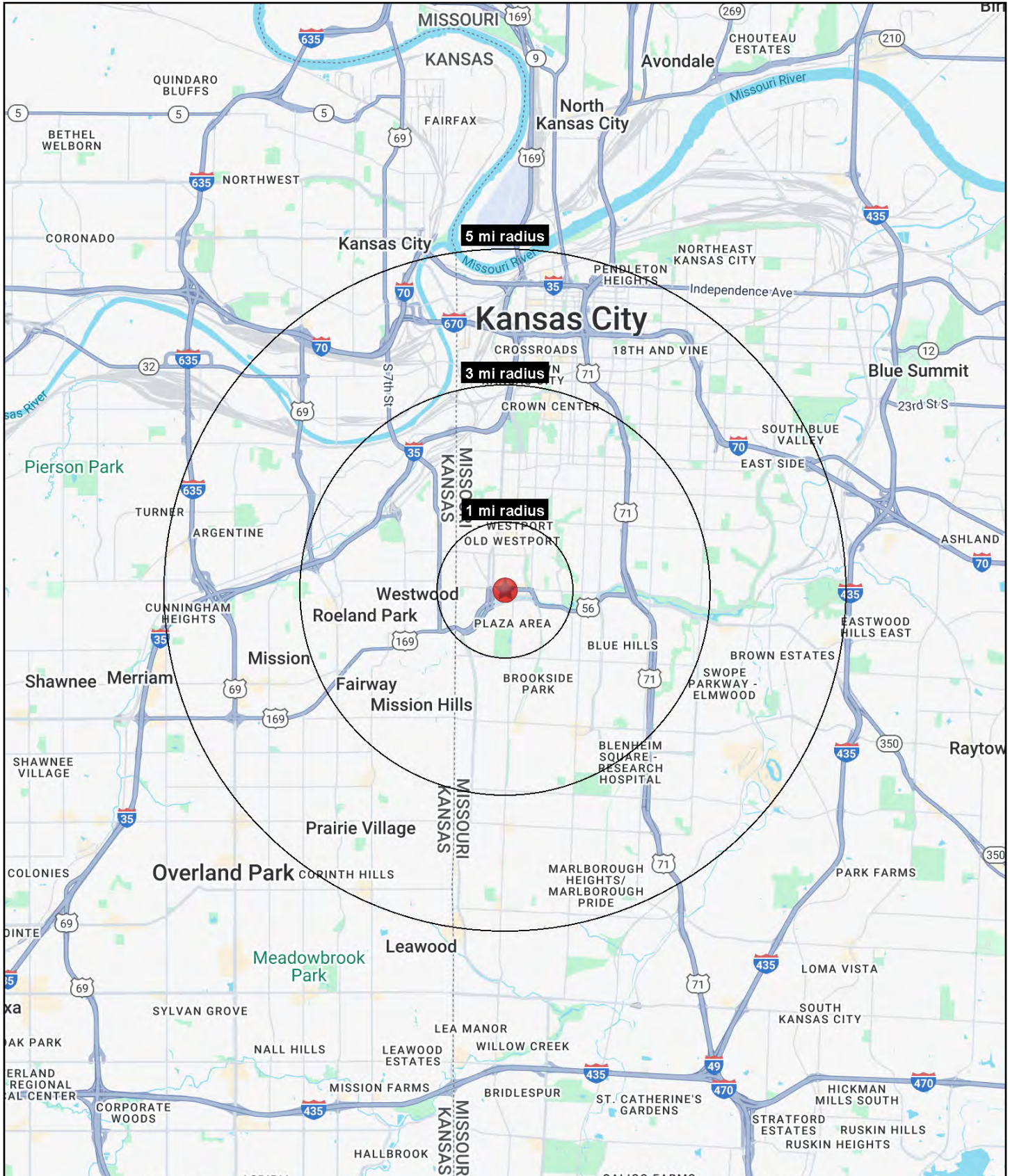
Kansas City's High End Retail, Restaurant, Hotel, Office, and Entertainment District - World Famous Since 1922





# SKELLY BUILDING ON THE COUNTRY CLUB PLAZA

Kansas City's High End Retail, Restaurant, Hotel, Office, and Entertainment District - World Famous Since 1922





# SKELLY BUILDING ON THE COUNTRY CLUB PLAZA

Kansas City's High End Retail, Restaurant, Hotel, Office,  
and Entertainment District - World Famous Since 1922

605 W. 47th Street Kansas City, MO 64112	1 mi radius	3 mi radius	5 mi radius
<b>Population</b>			
2025 Estimated Population	20,975	121,404	277,480
2030 Projected Population	21,356	122,379	278,474
2020 Census Population	19,955	117,497	269,931
2010 Census Population	18,241	111,245	256,461
Projected Annual Growth 2025 to 2030	0.4%	0.2%	-
Historical Annual Growth 2010 to 2025	1.0%	0.6%	0.5%
2025 Median Age	34.6	35.5	35.2
<b>Households</b>			
2025 Estimated Households	12,373	58,592	128,857
2030 Projected Households	12,796	59,835	131,478
2020 Census Households	11,641	55,003	122,470
2010 Census Households	10,710	51,736	113,785
Projected Annual Growth 2025 to 2030	0.7%	0.4%	0.4%
Historical Annual Growth 2010 to 2025	1.0%	0.9%	0.9%
<b>Race and Ethnicity</b>			
2025 Estimated White	80.3%	61.8%	56.2%
2025 Estimated Black or African American	7.4%	24.9%	27.1%
2025 Estimated Asian or Pacific Islander	4.3%	2.7%	2.6%
2025 Estimated American Indian or Native Alaskan	0.3%	0.4%	0.5%
2025 Estimated Other Races	7.7%	10.2%	13.6%
2025 Estimated Hispanic	8.5%	10.9%	14.9%
<b>Income</b>			
2025 Estimated Average Household Income	\$127,474	\$120,122	\$105,051
2025 Estimated Median Household Income	\$85,564	\$84,484	\$77,438
2025 Estimated Per Capita Income	\$75,378	\$58,183	\$48,965
<b>Education (Age 25+)</b>			
2025 Estimated Elementary (Grade Level 0 to 8)	1.1%	2.4%	3.7%
2025 Estimated Some High School (Grade Level 9 to 11)	2.4%	4.2%	5.2%
2025 Estimated High School Graduate	10.3%	18.5%	21.6%
2025 Estimated Some College	12.3%	16.1%	18.1%
2025 Estimated Associates Degree Only	4.5%	5.1%	5.6%
2025 Estimated Bachelors Degree Only	37.5%	30.1%	26.9%
2025 Estimated Graduate Degree	31.9%	23.6%	18.8%
<b>Business</b>			
2025 Estimated Total Businesses	2,460	7,294	16,381
2025 Estimated Total Employees	28,933	88,372	202,186
2025 Estimated Employee Population per Business	11.8	12.1	12.3
2025 Estimated Residential Population per Business	8.5	16.6	16.9

©2025, Sites USA, Chandler, Arizona, 480-491-1112 Demographic Source: Applied Geographic Solutions 5/2025, TIGER Geography - RS1

