

EXISTING AND PROPOSED SPATIAL LAYOUTS OF EXISTING BUILDING FOR

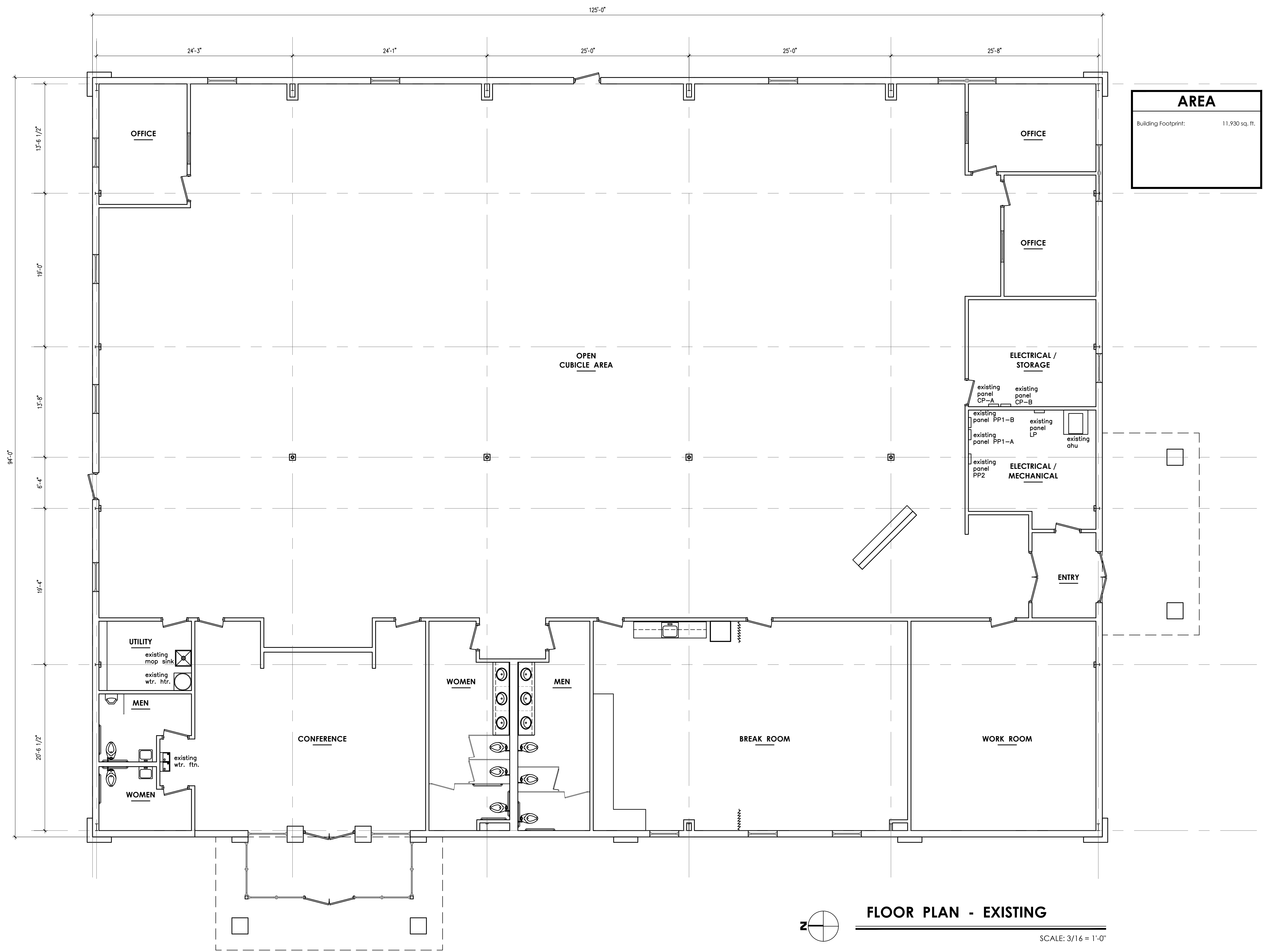
K SRA MANAGEMENT

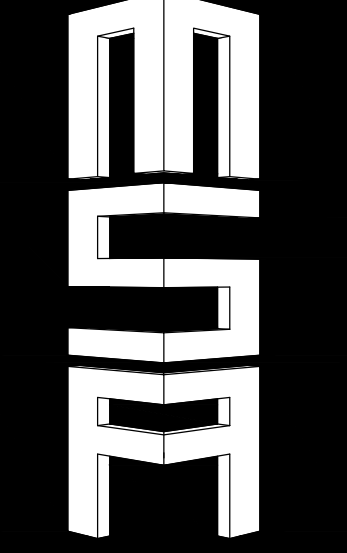
2608 FAIR PARK BLVD - JONESBORO, ARKANSAS 72401

SEAL
PRELIMINARY
NOT FOR
CONSTRUCTION

FLOOR PLAN
EXISTING

A-0
SHEET NO.





EXISTING AND PROPOSED SPATIAL LAYOUTS OF EXISTING BUILDING FOR

K SRA MANAGEMENT

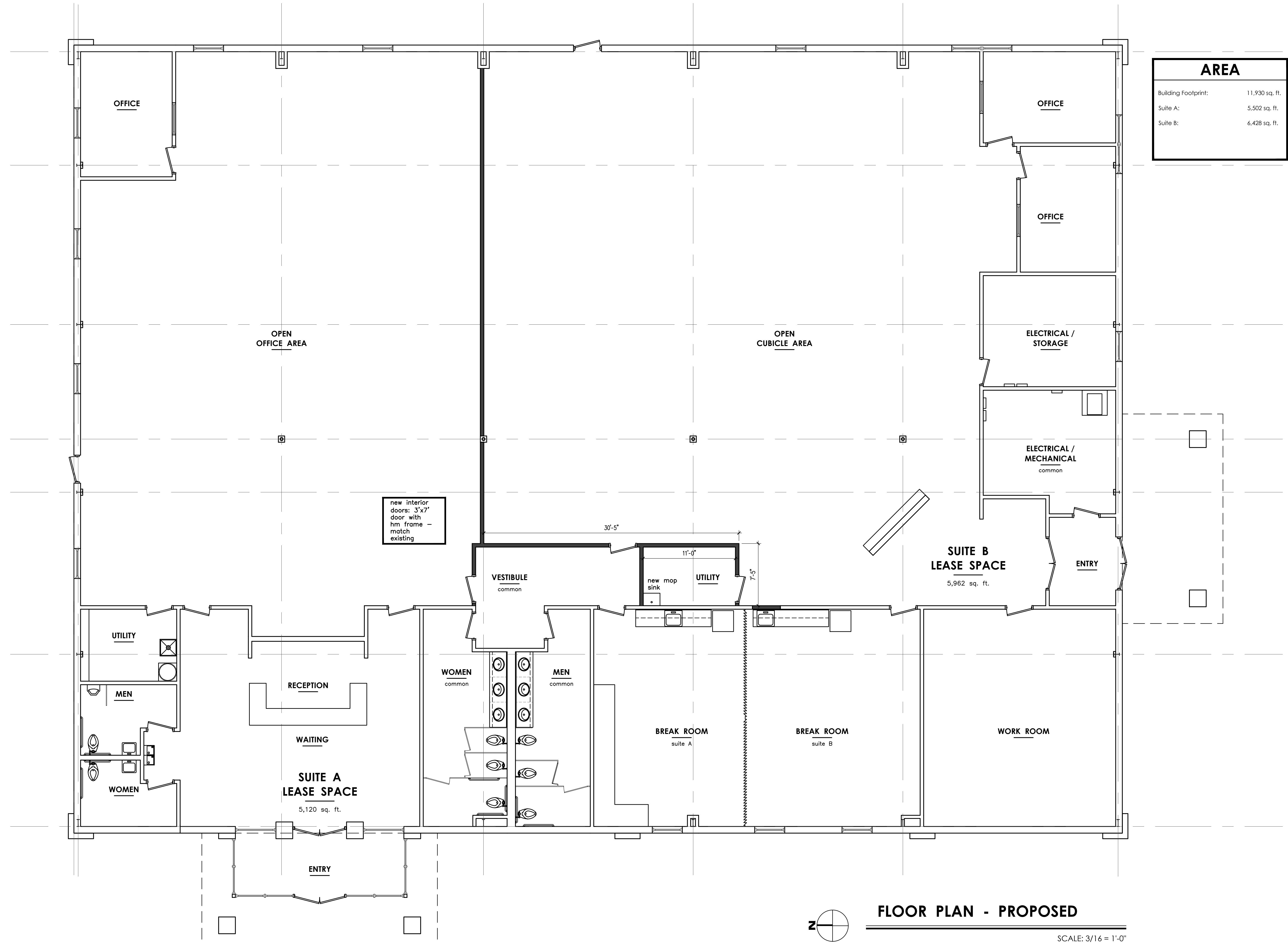
2608 FAIR PARK BLVD - JONESBORO, ARKANSAS 72401

SEAL

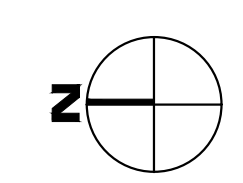
PRELIMINARY
NOT FOR
CONSTRUCTION

FLOOR PLAN
PROPOSED

A-1
SHEET NO.



AREA	
Building Footprint:	11,930 sq. ft.
Suite A:	5,502 sq. ft.
Suite B:	6,428 sq. ft.



FLOOR PLAN - PROPOSED

SCALE: 3/16" = 1'-0"