

4820 Clark Howell Hwy Suite C-8 ATLANTA, GA 30349

Building C

7,854 sq. ft.
AVAILABLE

4
DOCK DOORS

1,408 sq. ft.
OFFICE AREA

1
DRIVE IN DOOR

18'
CLEAR HEIGHT

120'
BUILDING DEPTH

Features

A 35,673 sq. ft. building area with 7,854 sq. ft. available.

Immediate access to I-285, I-75, and Hartsfield-Jackson Atlanta International Airport.

Located in Clayton County a Tier 1 county that allows up to \$3,500 job tax credit per new job created (www.investclayton.com)

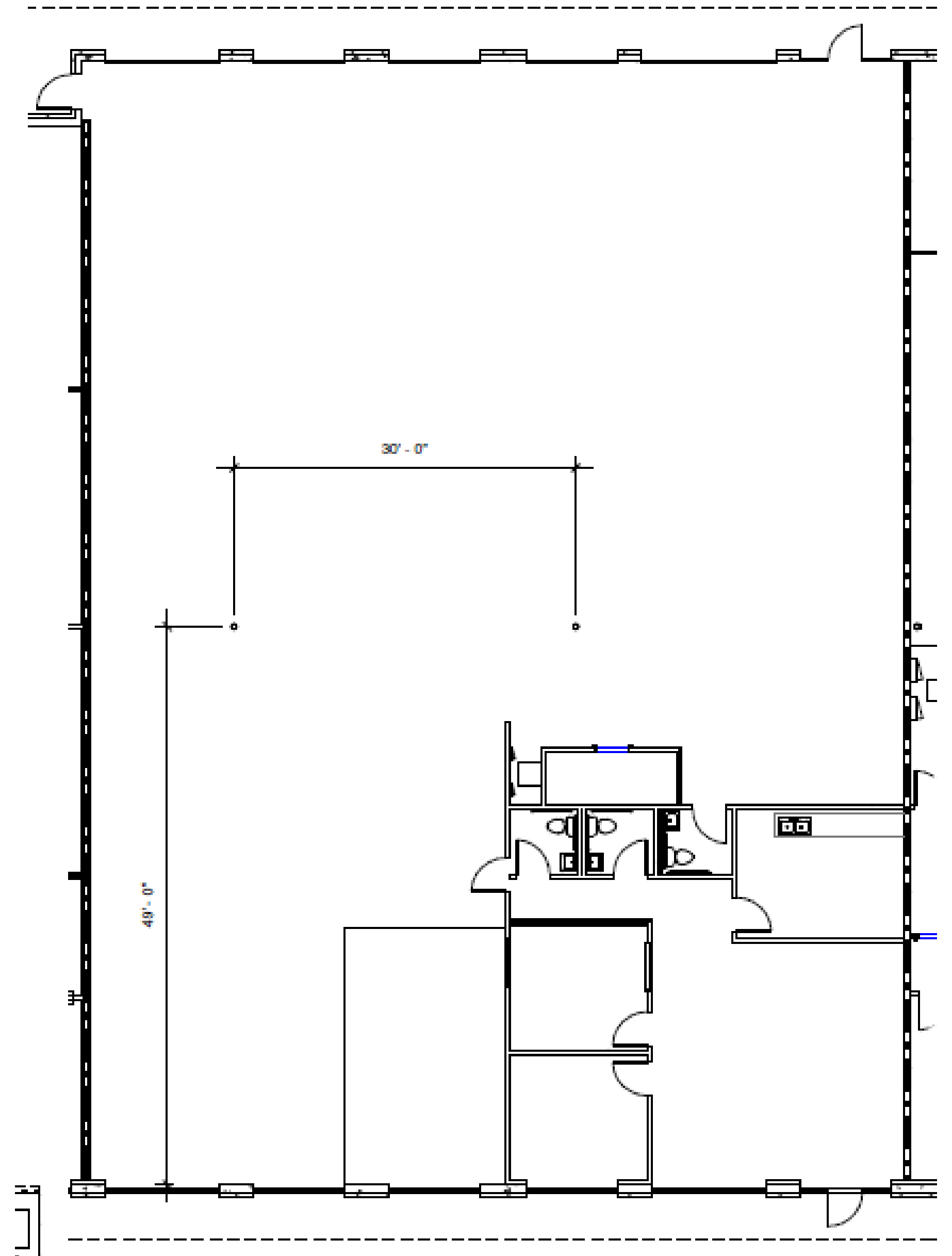


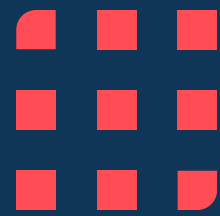
Building Specifications

| | |
|------------------------|-----------------------|
| Building Size | 35,673 sq. ft. |
| Available | 7,854 sq. ft. |
| Office | 1,408 sq. ft. |
| Dock High Doors | 4 Doors |
| Drive in Door | 1 Door |
| Sprinklers | Wet |
| Configuration | Rear Load |



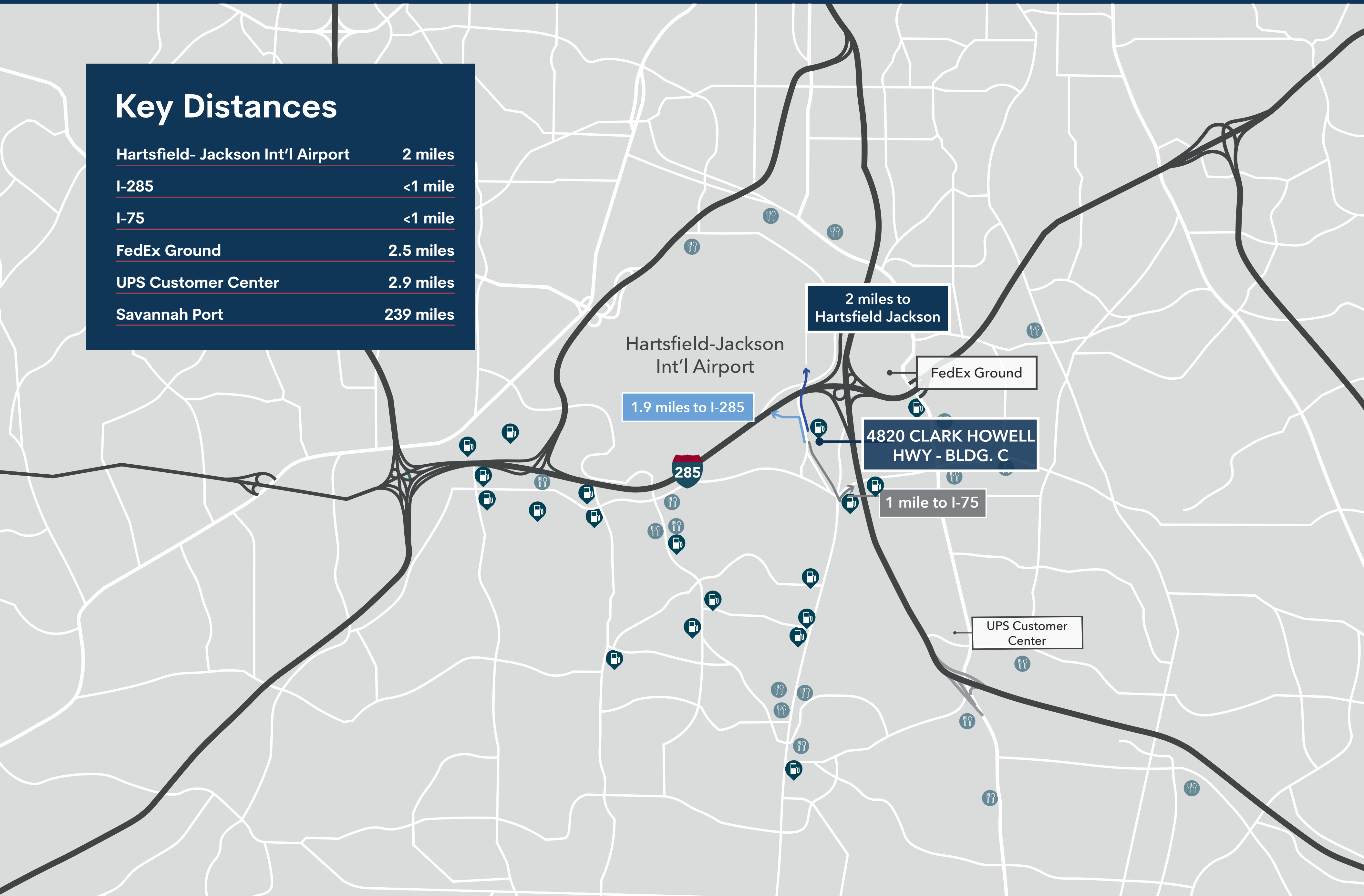
Suite C-8





Key Distances

| | |
|--|-------------------|
| <u>Hartsfield- Jackson Int'l Airport</u> | <u>2 miles</u> |
| <u>I-285</u> | <u><1 mile</u> |
| <u>I-75</u> | <u><1 mile</u> |
| <u>FedEx Ground</u> | <u>2.5 miles</u> |
| <u>UPS Customer Center</u> | <u>2.9 miles</u> |
| <u>Savannah Port</u> | <u>239 miles</u> |



4820 Clark Howell Hwy

ATLANTA, GA 30349



Leasing Contacts



Rick Tumlin, CCIM, SIOR

404.442.2816

rtumlin@lee-associates.com

Mike Sutter, SIOR

404.442.2804

msutter@lee-associates.com

Elizabeth Kennedy

404.781.2106

ekennedy@lee-associates.com

All information furnished regarding property for sale, rental, or financing is from sources deemed reliable, but not warranty or representation is made to the accuracy thereof and same is submitted to errors, omissions, change of price, rental or other conditions prior to sale, lease, or financing or withdrawal without notice. No liability of any kind is to be imposed on the broker herein.

Brookfield Properties

Celeste Land

404.418.4168

celeste.land@brookfieldproperties.com

