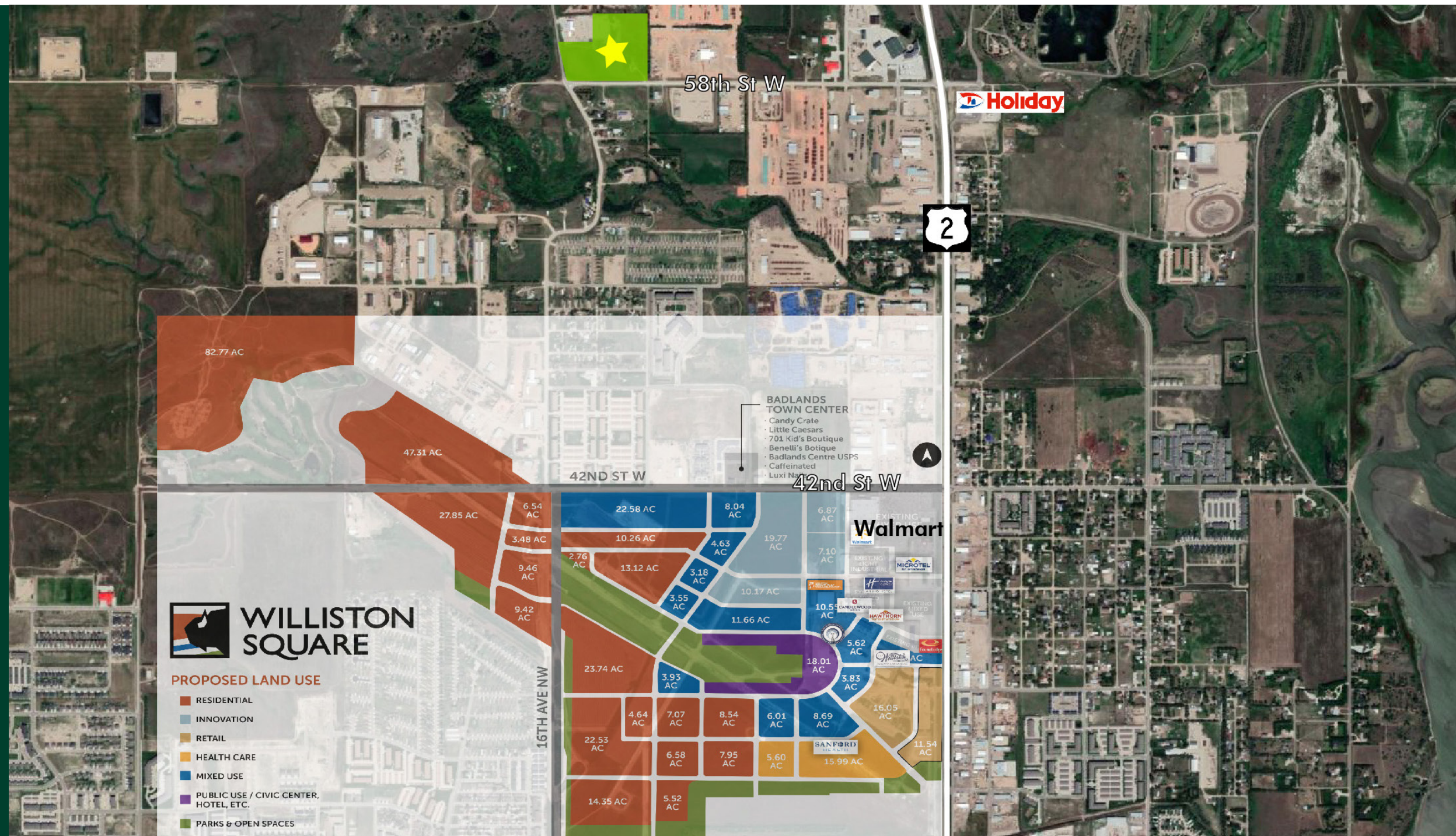


15.7 Acres of Ready to Develop Industrial Land

Highway 7 Industrial Park

Williston, ND 58801
www.cbre.com



The Property

CBRE would like to present for sale 15.7 acres of land on the northwest quadrant at the intersection of 137th Ave NW & 58th St W. The property is ideally located with close access to Highway 2 and can be divided in to 1-acre lots.

Property Details	
Parcel Numbers	01285000001020 01285000001015
Zoning	M-2 Heavy Industrial
Total Acres	15.7
Sale Rate	\$70,000/Acre
Utilities	Water: City Sewer: City Power Fiber

Highlights:

- + Ready to develop industrial land
- + Divisible into 1 acre lots
- + Build-to-suit options available
- + Located in the heart of the Bakken
- + 2.7 miles to new Williston Square Development
- + 9 miles to new Williston Basin International Airport



Contact Us

Chance Lindsey
Senior Vice President
+1 701 660 3500
chance.lindsey@cbre.com

Kyle Ferderer
Associate
+1 701 660 3500
kyle.ferderer@cbre.com

© 2023 CBRE, Inc. All rights reserved. This information has been obtained from sources believed reliable, but has not been verified for accuracy or completeness. You should conduct a careful, independent investigation of the property and verify all information. Any reliance on this information is solely at your own risk. CBRE and the CBRE logo are service marks of CBRE, Inc. All other marks displayed on this document are the property of their respective owners, and the use of such logos does not imply any affiliation with or endorsement of CBRE. Photos herein are the property of their respective owners. Use of these images without the express written consent of the owner is prohibited.