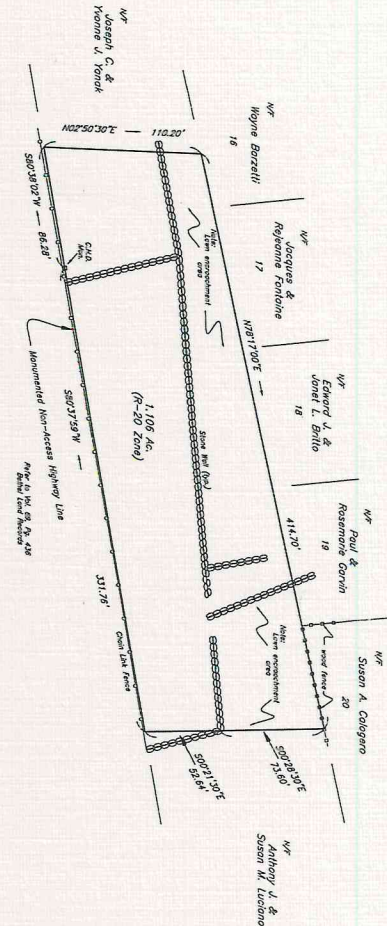


**Interstate 84 ~ Yankee Expressway**



**Site Plan Informational Table**

1. Zone: C1
2. Area: 1,106 Ac.
3. Gross Floor Area: 38,809 SF.
4. Bldg. Coverage: 100%
5. Bldg. Height: Existing
6. Parking: (see Parking Schedule)
7. Proposed Density: 1/4
8. Open Space: 1/4

**Parking Schedule**

Office: (Parking Class Three): 18,000 SF. Gross / 100 = 25 Spaces Required  
 Plus 2 spaces per unit required (1 Unit)  
 Light Industrial: (Parking Class Four): 18,809 SF. Gross / 1,000 x 1.5 = 28 Spaces Required  
 Total Parking Required = 128 Spaces  
 Current Total Parking provided = 120 Spaces  
 Proposed additional parking = 10 Spaces  
 Proposed Total parking spaces = 120 Spaces

**Notes:**

1. This map represents a Boundary Survey based on a Restump, and was prepared in accordance with Class A-2 Standards.
2. Refer to Vol. 401 Pgs. 123 - Bethel Land Records.
3. Refer to File # Map 15, File 18 Map 150 & File 23 Map 194 - B.L.R.
4. Refer to map entitled: "Map prepared for Blackstone Industries, Inc. Bethel, Connecticut, Book 1407, Record 185 Ac. Total, Zone: C1 & R-20, Date: Aug. 22, 1986 Revised: Oct. 27, 1988" prepared by this office.



<p><b>Site Plan</b>                  Prepared For  <b>Blackstone Industries, Inc.</b>                  Bethel, Connecticut</p>		<p>Scale: 1" = 40'                  Area: (Total)                  4,185 Ac.                  Zone:                  As noted                  Date:                  Sept. 3, 2002</p>
<p>3. PREPARED, REVIEWED, AND DRAWN BY: [Signature] [Name]                  4. CHECKED BY: [Signature] [Name]                  5. SURVEYED BY: [Signature] [Name]                  6. CONDUCTED BY: [Signature] [Name]                  7. FIELD NOTES BY: [Signature] [Name]                  8. FIELD BOOKS BY: [Signature] [Name]                  9. FIELD SKETCHES BY: [Signature] [Name]                  10. FIELD PHOTOGRAPHS BY: [Signature] [Name]                  11. FIELD MEASUREMENTS BY: [Signature] [Name]                  12. FIELD CALCULATIONS BY: [Signature] [Name]                  13. FIELD RECORDS BY: [Signature] [Name]                  14. FIELD INSTRUMENTS BY: [Signature] [Name]                  15. FIELD EQUIPMENT BY: [Signature] [Name]                  16. FIELD SUPPLIES BY: [Signature] [Name]                  17. FIELD ASSISTANTS BY: [Signature] [Name]                  18. FIELD TRANSPORTATION BY: [Signature] [Name]                  19. FIELD MEALS BY: [Signature] [Name]                  20. FIELD ACCOMMODATIONS BY: [Signature] [Name]                  21. FIELD SECURITY BY: [Signature] [Name]                  22. FIELD SAFETY BY: [Signature] [Name]                  23. FIELD FIRST AID BY: [Signature] [Name]                  24. FIELD FIRE BY: [Signature] [Name]                  25. FIELD THEFT BY: [Signature] [Name]                  26. FIELD VANDALISM BY: [Signature] [Name]                  27. FIELD OTHER BY: [Signature] [Name]</p>		<p>NEW ENGLAND LAND SURVEYING, P.C.                  ROBBI COMMONS-118 COAL PIT HILL RD.-DANBURY, CT                  203-752-1111                  FAX: 203-752-1112                  WWW.NELANDSURV.COM                  1998                  106 No. 156                  15629</p>