

Exceptional Ridge Top Development Site in East Honolulu

Private Gated Site, Panoramic Views from
Diamond Head to Koko Head & Makapuu

Kamehame Ridge, Honolulu, HI



[Watch the video here](#)






UNIQUE OPPORTUNITY

The exclusive ridgetop developments in East Honolulu (Waialae Iki, Hawaii Loa Ridge, Mariners Ridge and Kamehame Ridge) are famous for their unrivaled panoramic views, and with limited inventory have consistently garnered among the highest single family home prices in the Honolulu market. **This is the last remaining multi-home ridge top development site in East Honolulu.**

Potential opportunities include:

- Sale of developed lots
- Cluster/subdivision of Single Family Homes
- One or more Luxury Estates

PROPERTY DETAILS

 LOCATION	Top of Kamehame Drive, Honolulu, HI
 TMK	3-9-10:44 & 3-9-10:48
 LAND AREA	Parcel 44 14.594 acres Parcel 48 1.837 acres <hr/> Total 16.431 acres
 ZONING	R-10 (15.287 ac.) & P-1 (1.144 ac.)
 ASKING PRICE	\$6,600,000 (Fee Simple)





PROPERTY HIGHLIGHTS

- Breathtaking ocean and valley vistas, including views of neighbor islands, sunrise/sunset, and whale watching.
- Prime location offering exclusive living with proximity to shipping, dining and amenities.



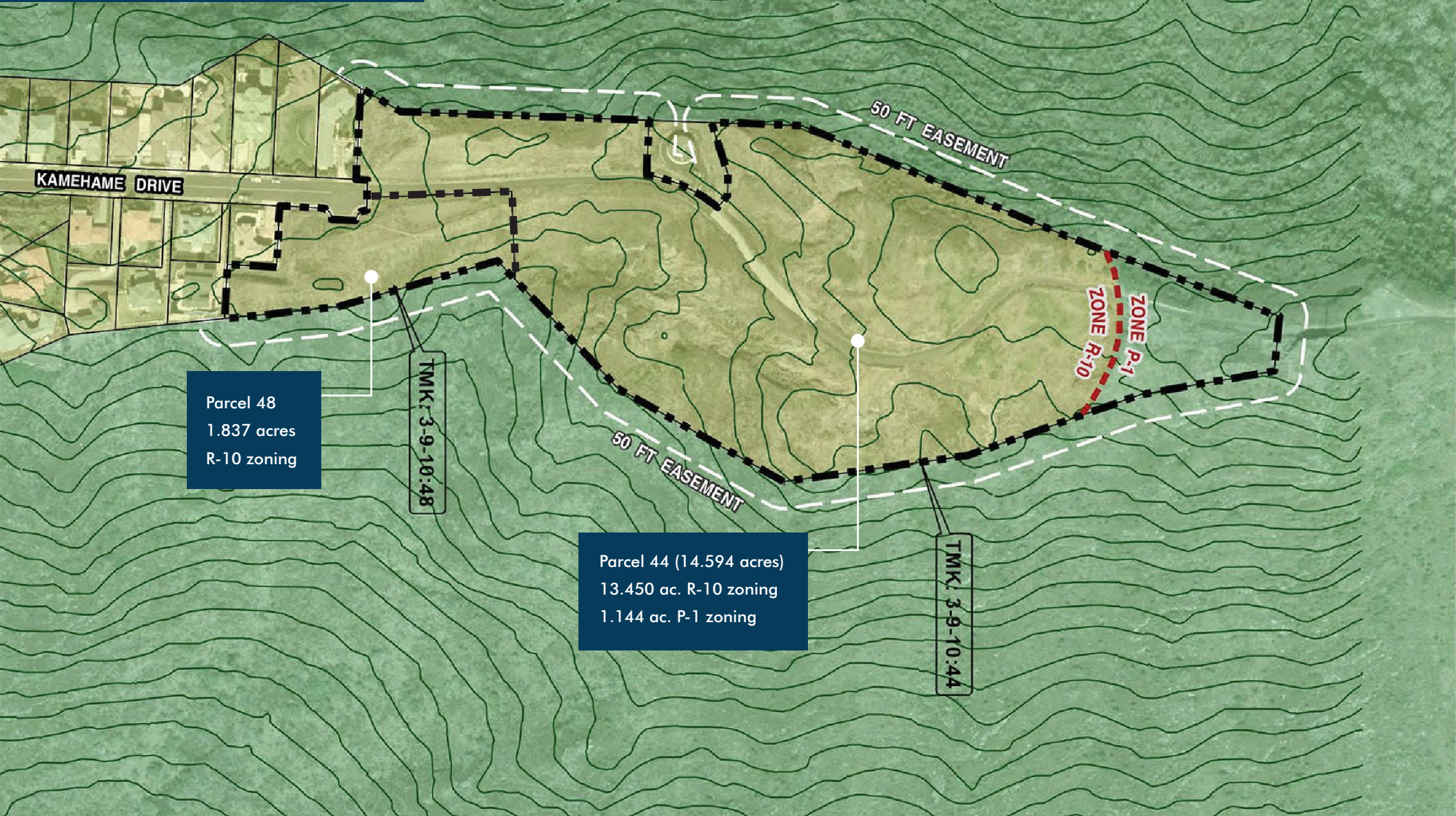
[View video](#)

ENTITLEMENTS

- R-10 zoning in-place (with small uppermost portion P-1)
- Preliminary project approval from Kamehameha Schools, as required by deed restriction.
- A "Phase 1" 7-Unit Cluster Housing Permit Application approval from County Planning Department (expired)
- Full Topographic Survey and extensive Planning/Engineering studies provided to Buyer

INFRASTRUCTURE

- Private gated roadway and easement bisecting the property
- Water to lower portion of the property (with upper portion served once additional tank/lines are installed)
- Sewer, phone, cable, gas, electricity to property line



DAVID ASAKURA (B), CCIM

Partner · Broker-in-Charge · RB-20869
(808) 282-0503
dasakura@caahawaii.com

CAAHAWAII.COM • 225 QUEEN STREET, SUITE 200 • HONOLULU, HI 96813 • @WHEREHAWAIIWORKS

©2025 Commercial Asset Advisors. All information contained herein is obtained from sources deemed reliable. However, no representations or guarantees are made as to the accuracy thereof, and it is provided herein subject to errors, omissions, changes and withdrawals without notice. Offeror and/or his agent should confirm this information prior to making any offer. Buyer agrees that all negotiation shall be conducted through CAA only. No subagency is offered or intended.

