

818 E MEADOWLARK RD

DERBY, KS 67037

PROPERTY SUMMARY



PROPERTY DESCRIPTION

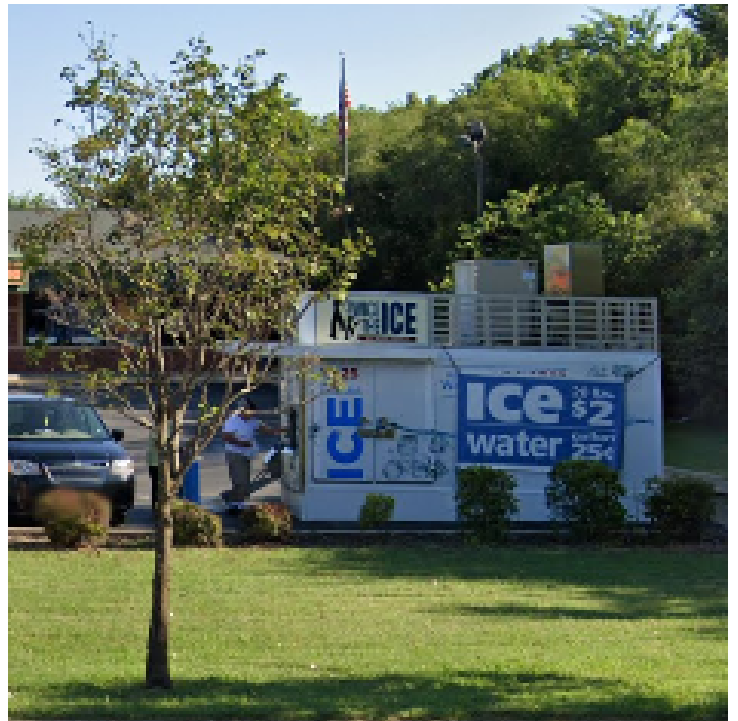
Strong visibility on the northeast corner of Meadowlark Blvd and N Woodlawn Blvd with up to 4920 Sq Ft available

PROPERTY HIGHLIGHTS

OFFERING SUMMARY

Lease Rate:	Negotiable
Number of Units:	2
Available SF:	5,000 SF
Building Size:	6,600 SF

SPACES	LEASE RATE	SPACE SIZE
818 E Meadowlark Rd	Negotiable	5,000 SF



Presented By:

Legacy Commercial Property
847.904.9200
info@legacypro.com

LEGACY | COMMERCIAL
PROPERTY

2500 Lehigh Ave
Glenview, IL 60026
<http://legacypro.com>

818 E MEADOWLARK RD

DERBY, KS 67037

RENT ROLL

TENANT NAME	UNIT NUMBER	UNIT SIZE (SF)	LEASE START	LEASE END	ANNUAL RENT	% OF GLA	PRICE PER SF/YR
Edward Jones BR#16941	A	1,600			\$0	24.24	\$0.00
Vacant	B	5,000			\$0	75.76	\$0.00
Totals/Averages		6,600			\$0		\$0.00

Presented By:

Legacy Commercial Property

847.904.9200

info@legacypro.com

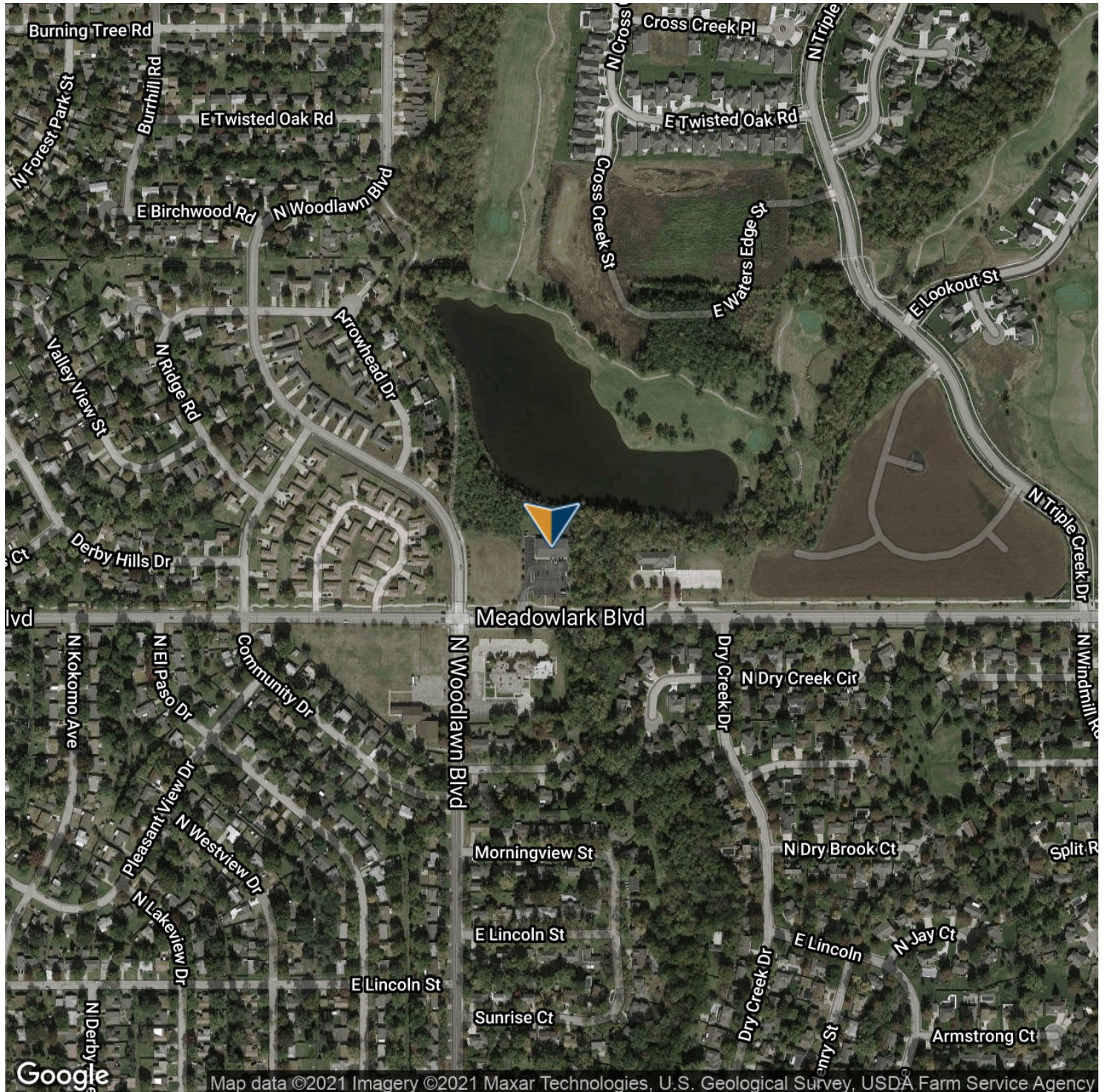


2500 Lehigh Ave
Glenview, IL 60026
<http://legacypro.com>

818 E MEADOWLARK RD

DERBY, KS 67037

LOCATION MAP



Presented By:

Legacy Commercial Property

847.904.9200

info@legacypro.com

 **LEGACY** | COMMERCIAL
PROPERTY

2500 Lehigh Ave

Glenview, IL 60026

<http://legacypro.com>