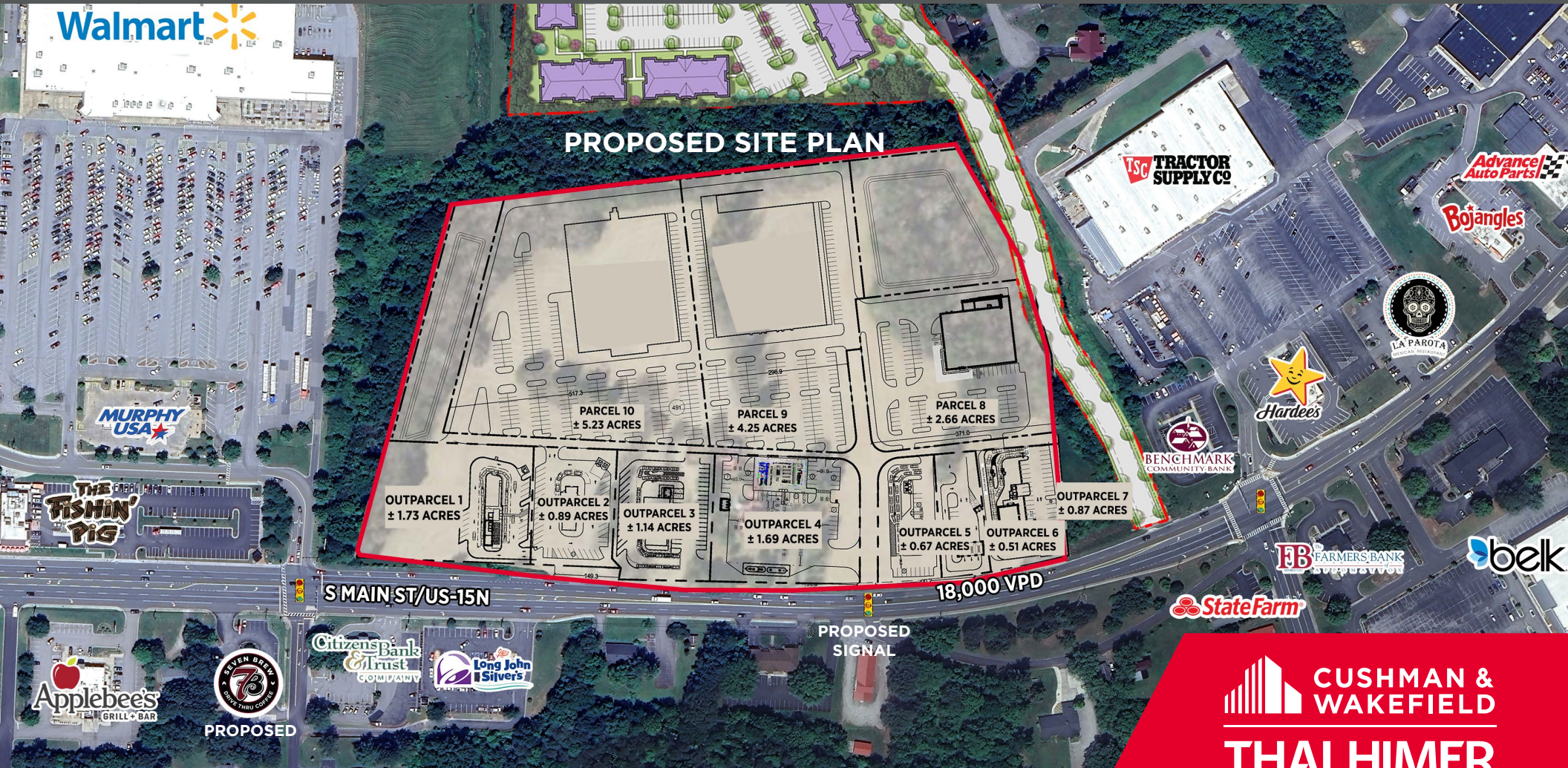


# 1703 S. MAIN STREET

## Farmville, VA

UP TO 22 ACRES | RETAIL/RESIDENTIAL/MEDICAL/OFFICE | FOR LEASE/SALE/BTS



**CUSHMAN & WAKEFIELD**  
**THALHIMER**

NICKI JASSY | [nicki.jassy@thalhimer.com](mailto:nicki.jassy@thalhimer.com) | 804 697 3433

Independently Owned and Operated / A Member of the Cushman & Wakefield Alliance

Cushman & Wakefield | Thalhimer © 2025. No warranty or representation, express or implied, is made to the accuracy or completeness of the information contained herein, and same is submitted subject to errors, omissions, change of price, rental or other conditions, withdrawal without notice, and to any special listing conditions imposed by the property owner(s). As applicable, we make no representation as to the condition of the property (or properties) in question.

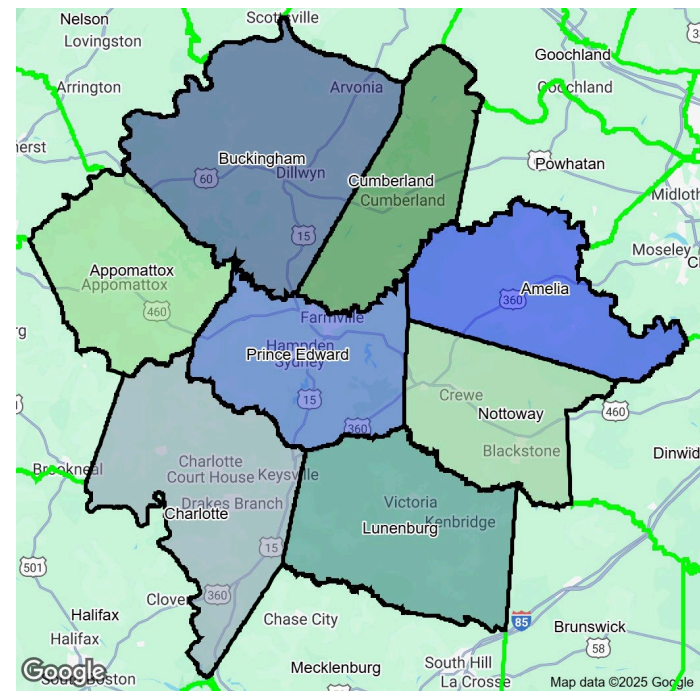
# 1703 S. MAIN STREET

## Farmville, VA

### PROPERTY DETAILS:

- Up to 12 acres for potential residential
- Anchor and Jr. Anchor opportunities
- Outparcels available
  - 0.5-22 acres available
  - Ground Lease, Sale, or BTS
- 1.5 miles from Longwood University and Hampden Sydney with over 6,000 students
- Pylon Signage
- Proposed signalized entrance

### NEARBY RETAILERS:

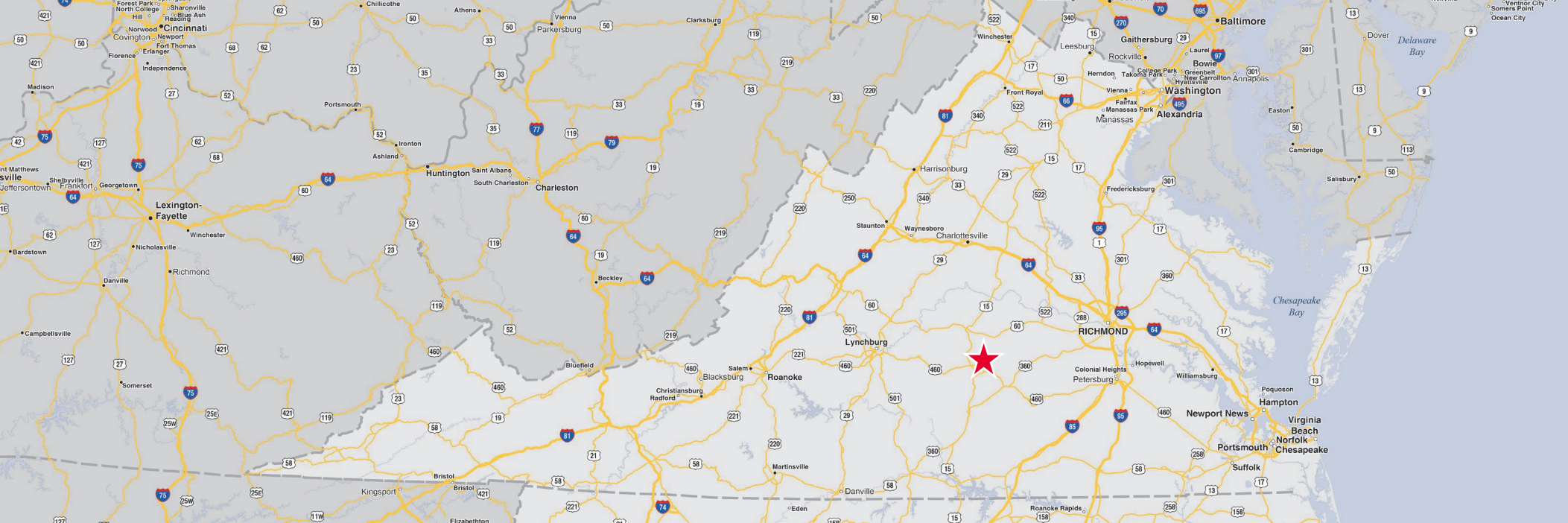


Trade Area	
Population	22,380
Households	7,151
Average Household Income	\$82,044
Median Age	27.4

# 1703 S. MAIN STREET

Farmville, VA





# 1703 S. MAIN STREET

Farmville, VA

For more information, please contact:

NICKI JASSY | [nicki.jassy@thalhimer.com](mailto:nicki.jassy@thalhimer.com) | 804 697 3433



Thalhimer Center  
1100 W. Broad Street  
Glen Allen, VA 23060  
[thalhimer.com](http://thalhimer.com)

Independently Owned and Operated / A Member of the Cushman & Wakefield Alliance

Cushman & Wakefield | Thalhimer © 2025. No warranty or representation, express or implied, is made to the accuracy or completeness of the information contained herein, and same is submitted subject to errors, omissions, change of price, rental or other conditions, withdrawal without notice, and to any special listing conditions imposed by the property owner(s). As applicable, we make no representation as to the condition of the property (or properties) in question.