

269 PROCTOR HILL RD.
HOLLIS, NEW HAMPSHIRE

FOR SALE
± 15,175 SF

**WILLIAM
& REEVES**
COMMERCIAL REAL ESTATE



MIXED USED INDUSTRIAL

Total Building Size:
1st Floor: ±10,542 SF
2nd Floor: ± 3,327 SF
Mezzanine: +1,306 SF
Total ±15,175 SF

Property Type:
Mixed-use

Year Built:
1983

Parking:
Ample Parking

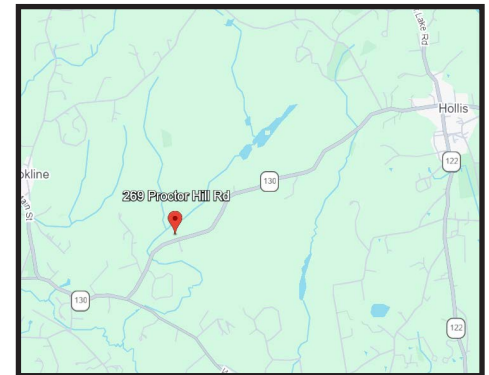
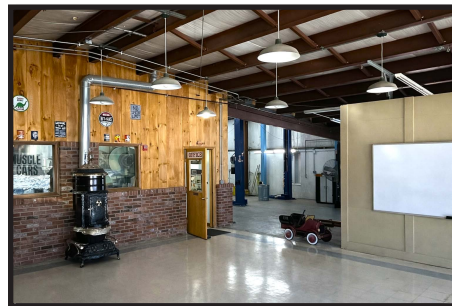
Lot Size:
+1.45 acres

Zoning:
Industrial

Loading:
4 overhead doors

Potential Uses:

- Contractor
- Auto Repair
- Landscaping
- Wood shop
- Fabrication



Highway Access:
≤ 7.5 mi to Exit 6
≤ 7.6 mi to 101A

DEANE NAVAROLI
CELL: 603.315.0808
EMAIL: DEANE@WRCRE.COM

WRCRE.COM

OFFICE: 603.851.5841

