

# FOR LEASE

SUB-LEASE - 18 MONTH TERM - LIGHT INDUSTRIAL  
EAST RIDGE BUSINESS PARK - 2,400 SF SPACE

9600 NE 126th Ave, Ste 2550 Vancouver, WA 98682

- 2,400 SF WH - Completely Insulated
- 1 OH Door 12' x 12' Grade Level
- 19' Clear Height - 208 V Power
- Paved Parking, Limited
- East Ridge Business Park - Orchards Area
- 3 Minutes to I-205



**\$3,600 Month + NNN**

**Kelly Shea**

360-921-3710 Mbl  
360-823-5110 Office

Kelly@SheaCRE.com



**MAJ COMMERCIAL**  
**REAL ESTATE**  
300 W 15TH ST, STE 201  
VANCOUVER, WA 98660

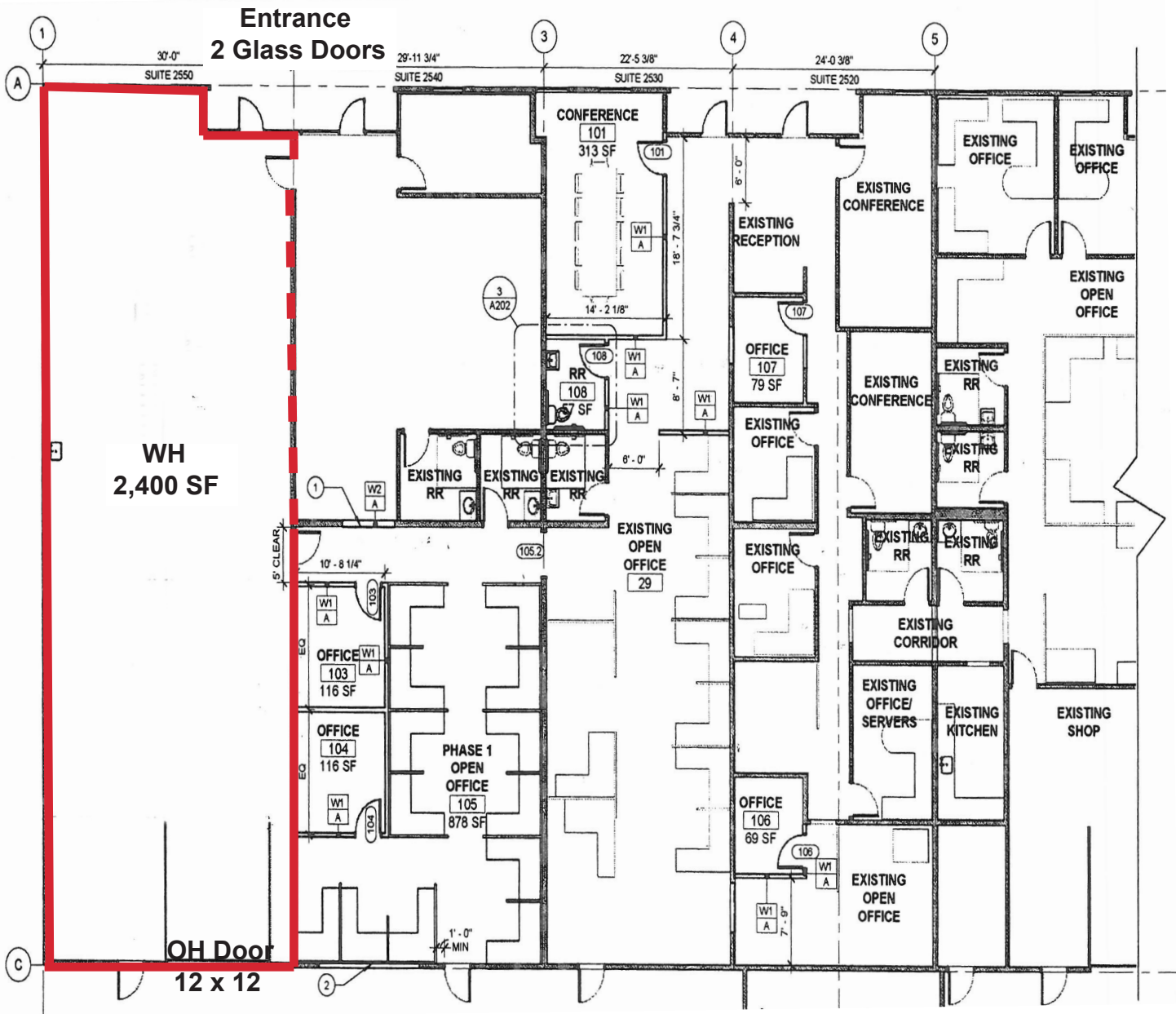
WHILE THE INFORMATION CONTAINED HEREIN IS FROM SOURCES DEEMED RELIABLE, IT HAS NOT BEEN INDEPENDENTLY VERIFIED BY THE MAJ COMMERCIAL REAL ESTATE OR BY BROKER.

9600 NE 126th Ave, Ste 2550 Vancouver, WA 98682



126th Ave

Parking Area



Parking Area

9600 NE 126th Ave, Ste 2550 Vancouver, WA 98682



